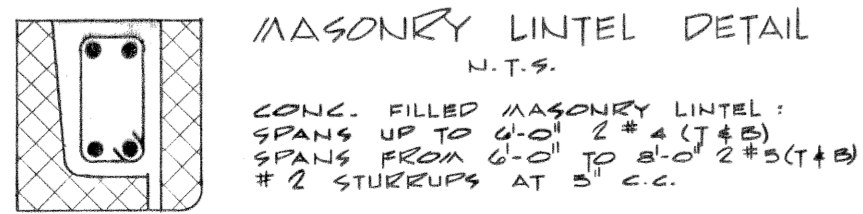
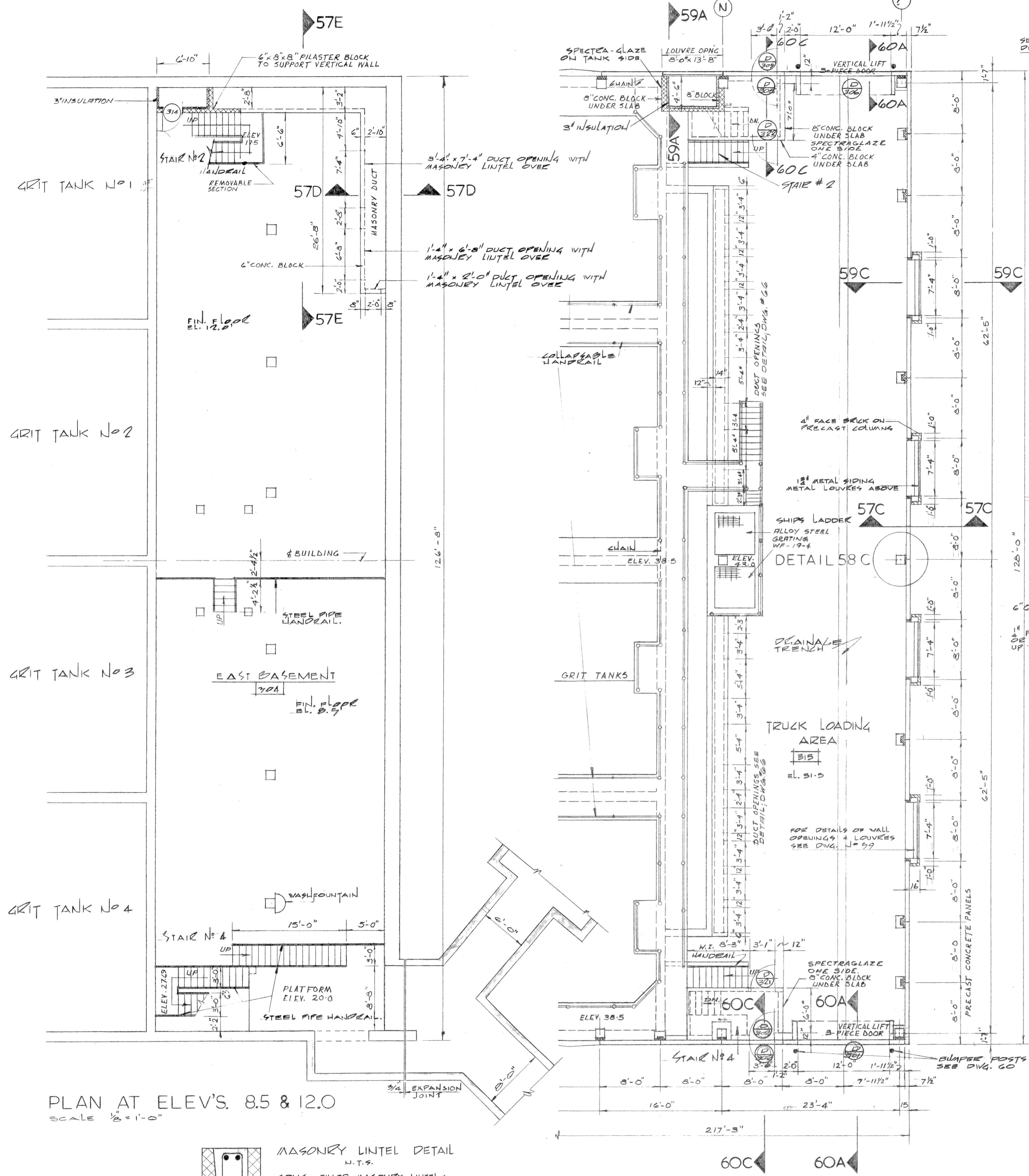
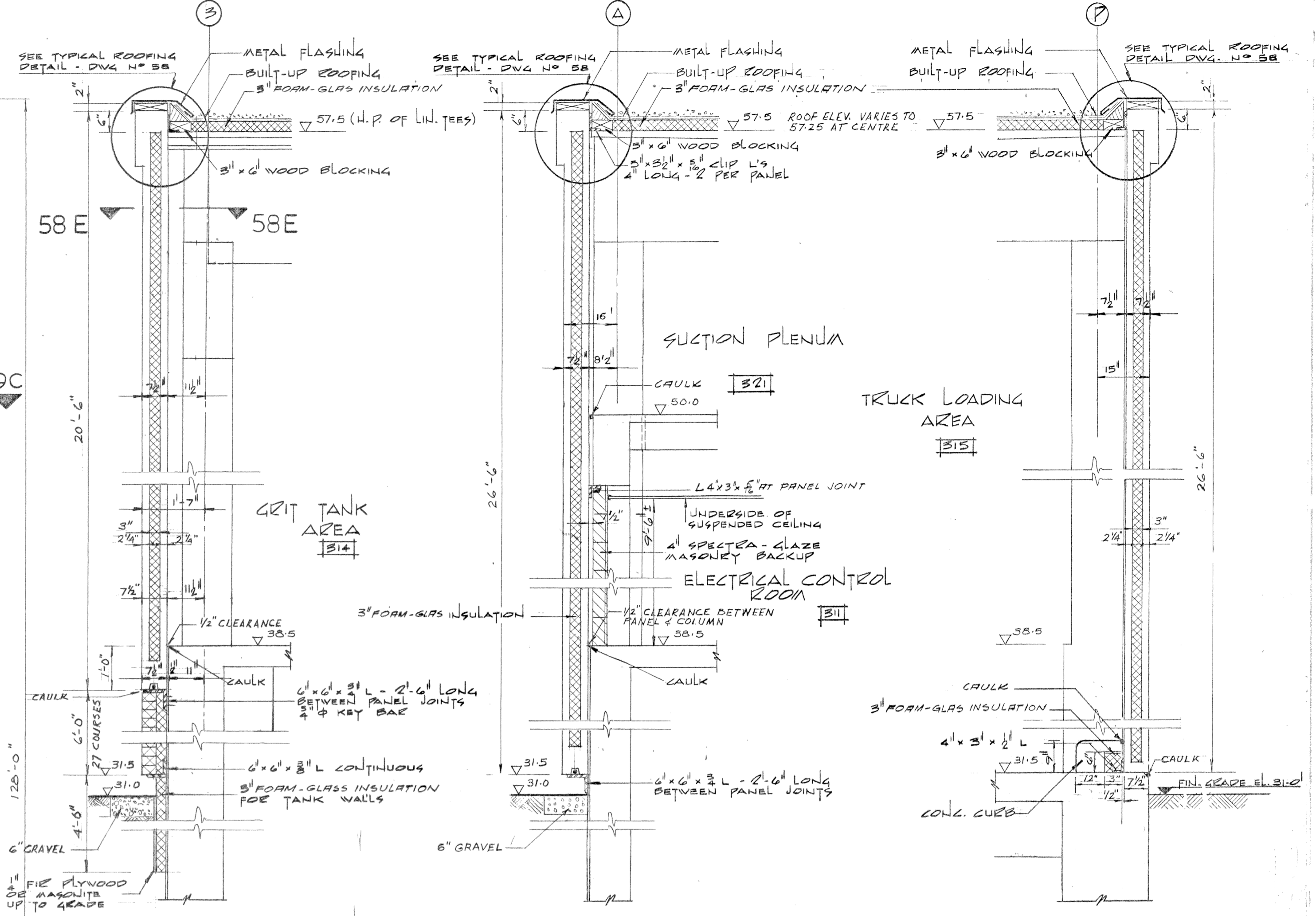


MICROFILMED



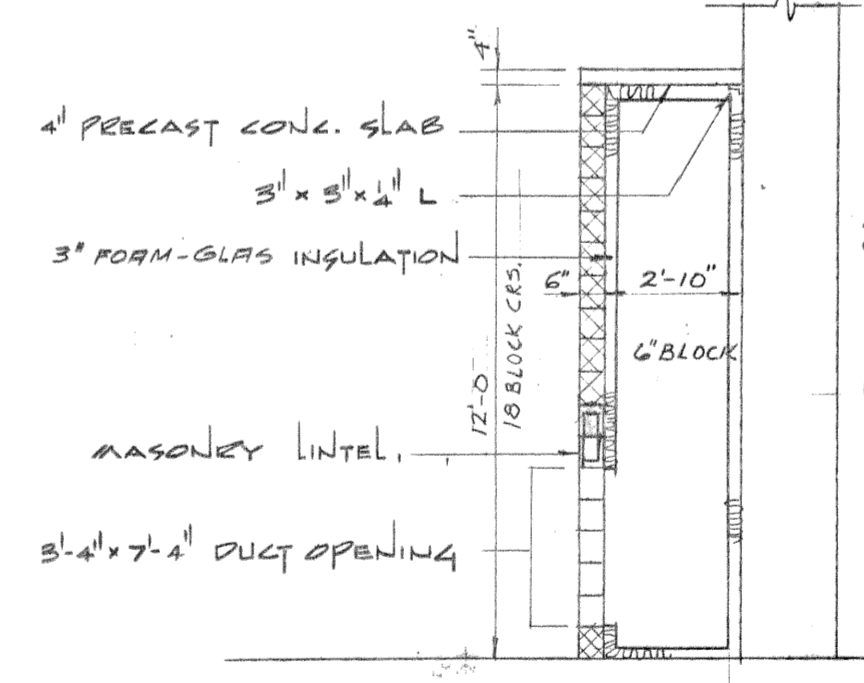
PLAN AT ELEV. 31.5  
SCALE 1/8" = 1'-0"



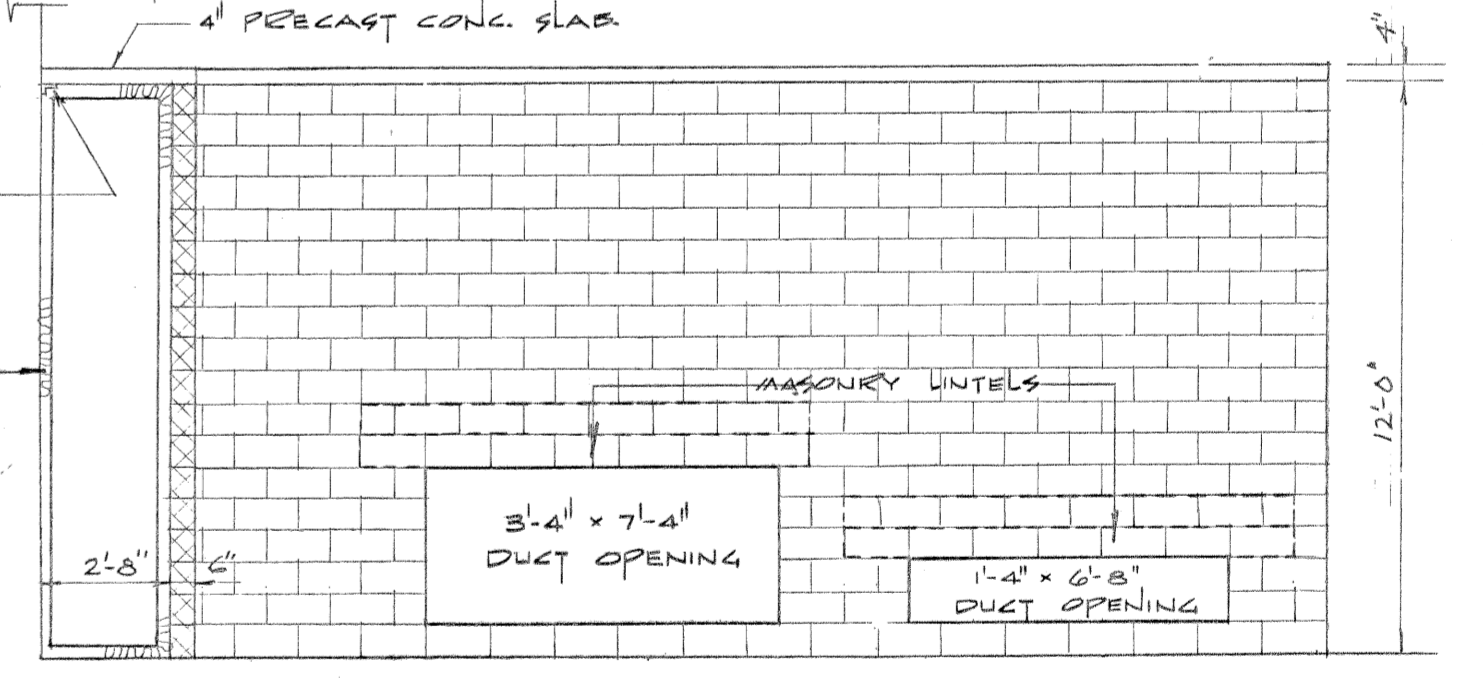
WALL SECTION 57A  
SCALE 1/2" = 1'-0"

WALL SECTION 57B  
SCALE 1/2" = 1'-0"

WALL SECTION 57C  
SCALE 1/2" = 1'-0"

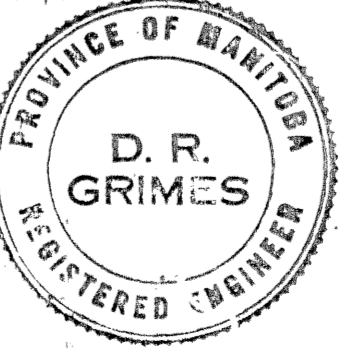


DETAIL SECTION 57D  
SCALE 1/4" = 1'-0"



DETAIL SECTION 57E  
SCALE 1/4" = 1'-0"

REVISIONS		
No.	DATE	DETAIL



THE METROPOLITAN CORPORATION OF GREATER WINNIPEG  
WATERWORKS AND WASTE DISPOSAL DIVISION

**NORTH END SEWAGE TREATMENT PLANT**

**CONTRACT A-GRIT REMOVAL BUILDING SUPERSTRUCTURE FLOOR PLANS, SECTIONS & DETAILS**

APPROVED  
 J. W. MacLaren  
 JAMES F. MACLAREN LIMITED ENGINEERS TORONTO  
 W.L. Wardrop Associates (Management) Limited ENGINEERING CONSULTANTS WINNIPEG  
 D. R. Grimes  
 W.L. WARDROP ASSOCIATES (MANAGEMENT) LIMITED ENGINEERING CONSULTANTS WINNIPEG  
 DIRECTOR & CHIEF ENGINEER

DATE: MARCH 11, 1963  
 SCALE: AS SHOWN  
 DWG. No. 57 OF 217  
**NEP-57**

FOR ACTUAL ELEV. SUBTRACT 0.37 F.T. **AS BUILT**

AUG 1966

FILE # NR10267

FILE 575-D-4595

NEP-0057