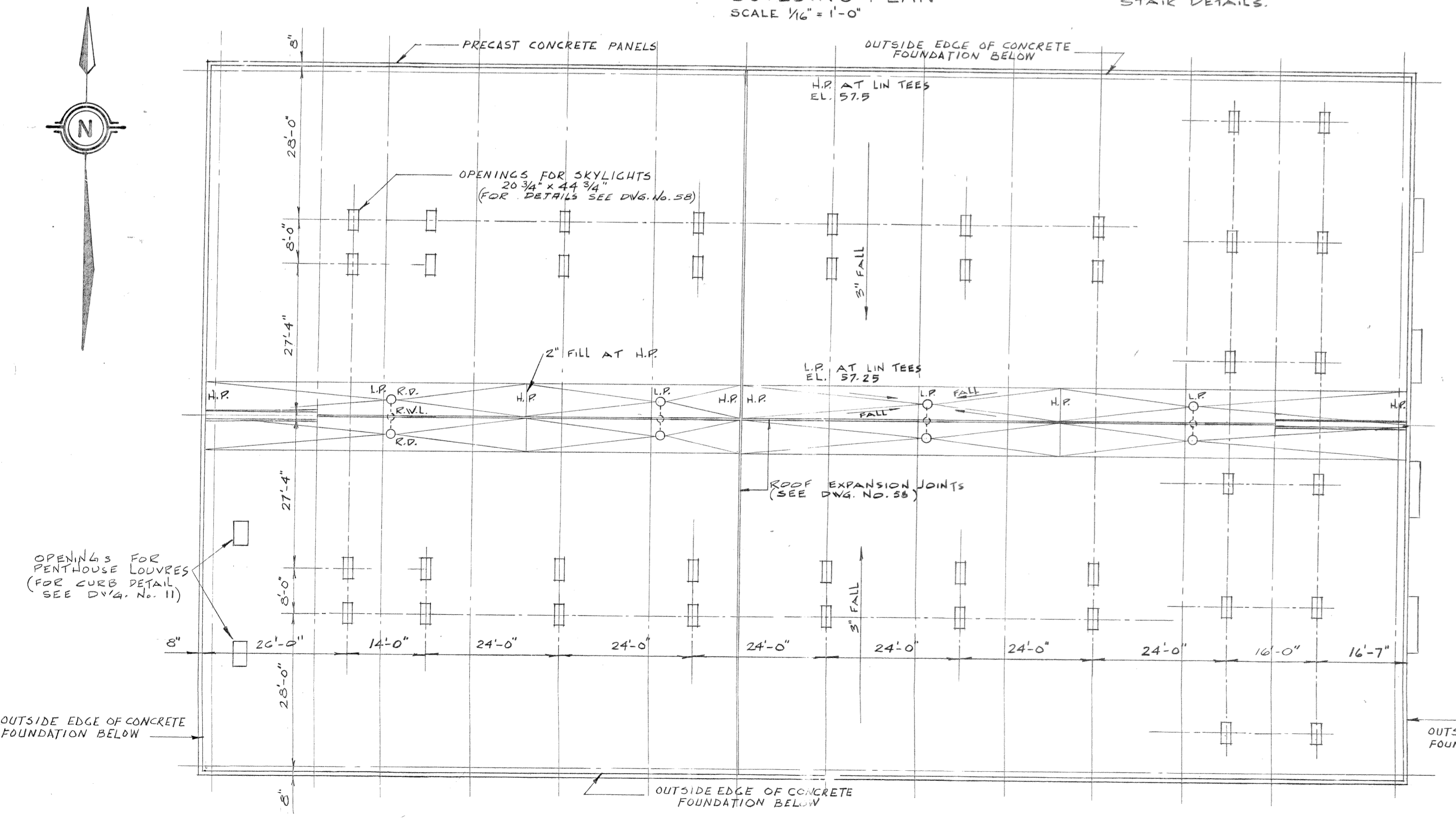
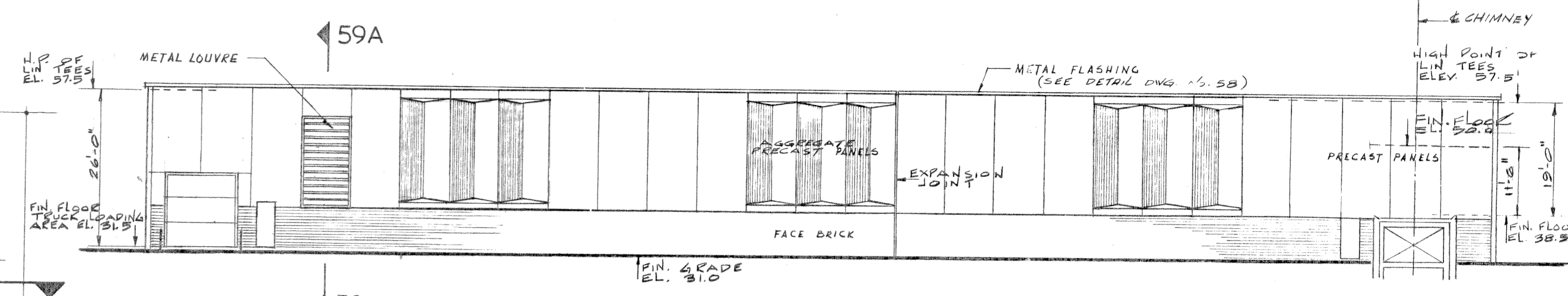


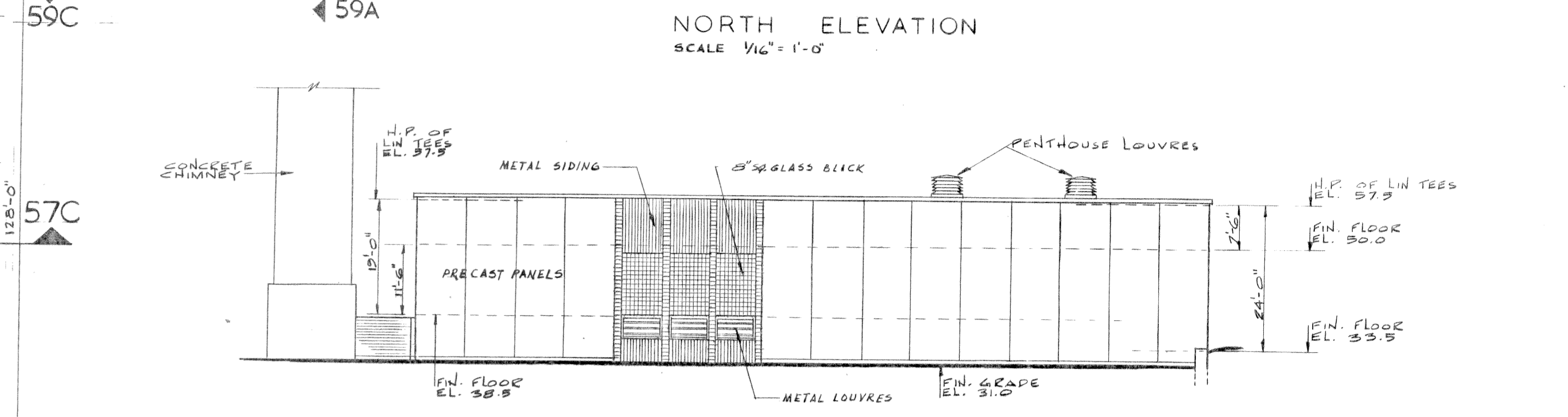
BUILDING PLAN
SCALE 1/16" = 1'-0"



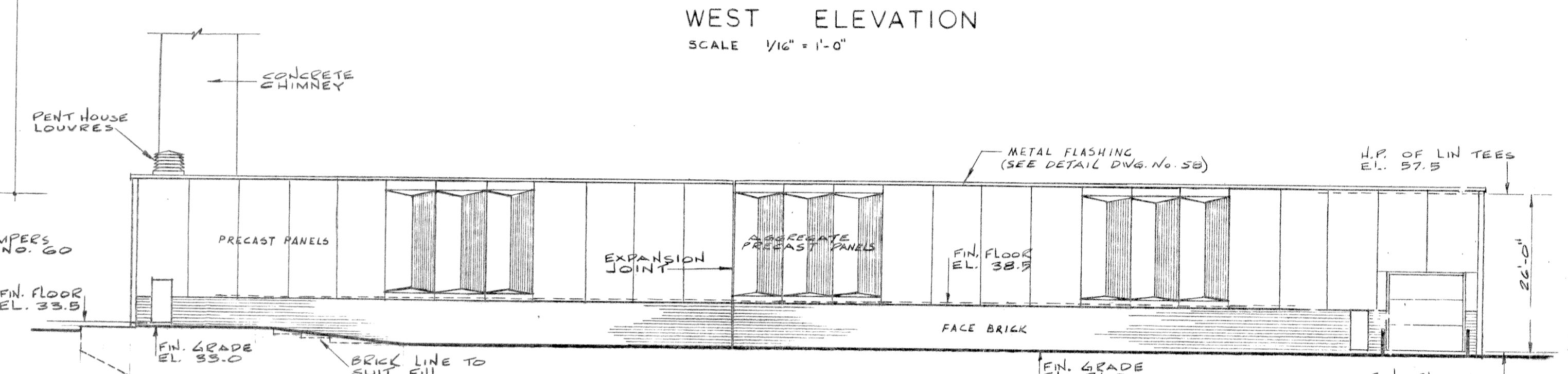
ROOF PLAN
SCALE 1/16" = 1'-0"



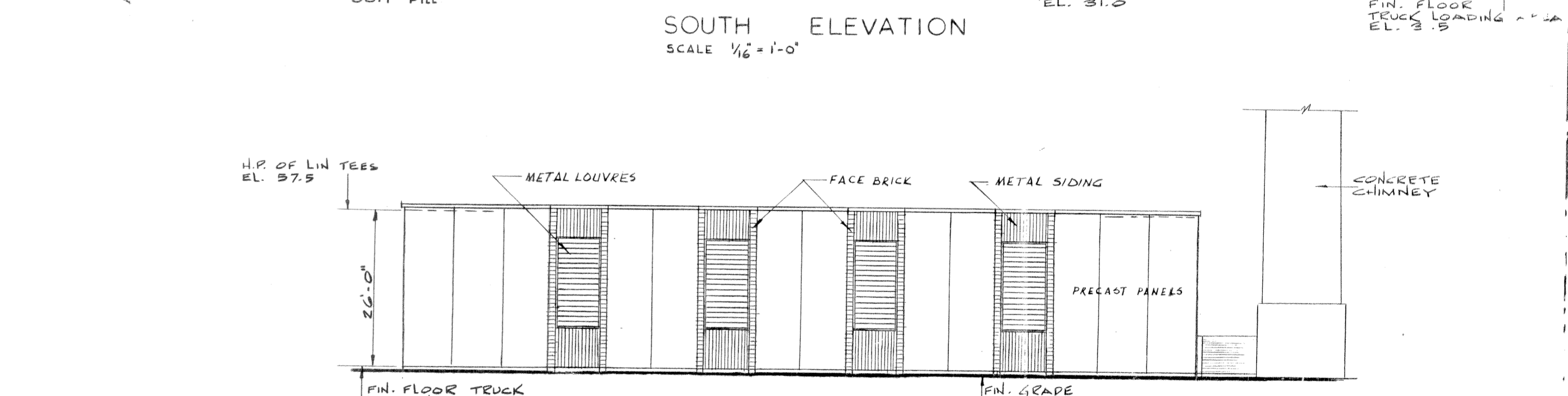
NORTH ELEVATION
SCALE 1/16" = 1'-0"



WEST ELEVATION
SCALE 1/16" = 1'-0"

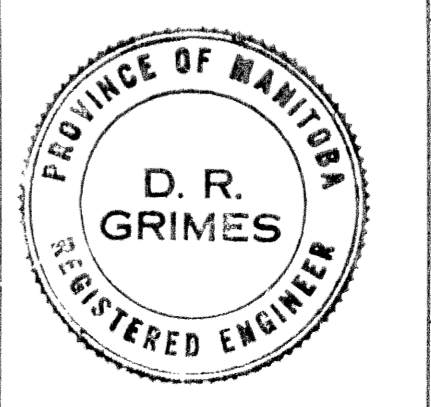
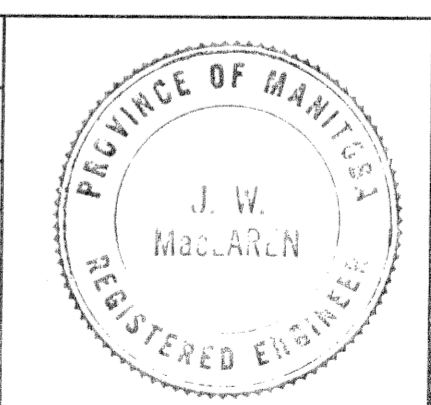


SOUTH ELEVATION
SCALE 1/16" = 1'-0"



EAST ELEVATION
SCALE 1/16" = 1'-0"

REVISIONS		
No.	DATE	DETAIL



THE METROPOLITAN CORPORATION OF GREATER WINNIPEG
WATERWORKS AND WASTE DISPOSAL DIVISION

NORTH END SEWAGE TREATMENT PLANT

CONTRACT A - GRIT REMOVAL BUILDING SUPERSTRUCTURE PLANS & ELEVATIONS

APPROVED: *J.W. MacLaren*
JAMES F. MACLAREN LIMITED ENGINEERS TORONTO

ENGINEER OF DESIGN

D. R. Grimes
W.L. WA'DROP ASSOCIATES (MANAGEMENT) LIMITED ENGINEERING CONSULTANTS WINNIPEG

ENGINEER OF WASTE DISPOSAL
DIRECTOR & CHIEF ENGINEER

DATE: MARCH 11, 1963
SCALE: 1/16" = 1'-0"

DWG. No. 56 OF 217

NEP-56

FOR ACTUAL ELEV. SUBTRACT 0.37 FT. AS BUILT

AUG 1966