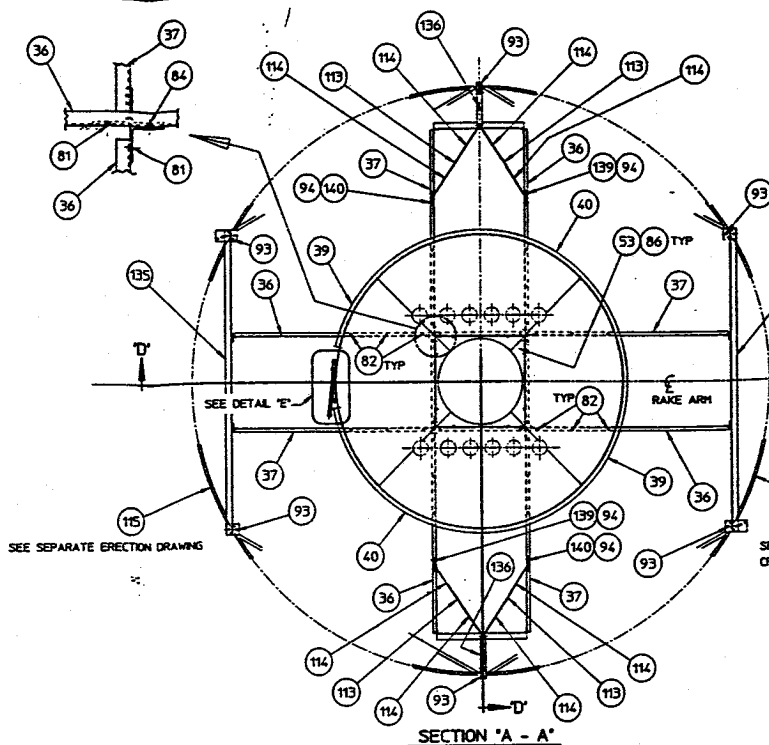
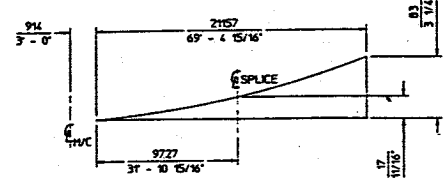


**SLUDGE COLLECTION BOX DETAIL**

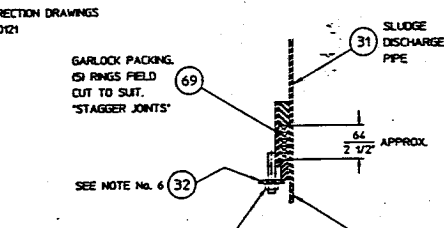


**SECTION "A - A"**

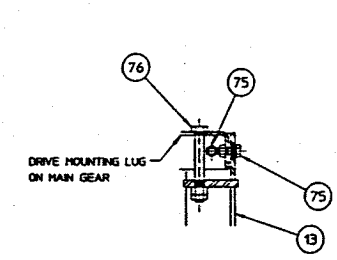
- NOTES**
1. ALL ITEMS CALLED OUT ON THIS DRAWING ARE IDENTIFIED ON PARTS LIST LC033440039.
  2. FOR ERECTION OF RAKE ARMS, BLADES, SCOURERS, SUCTION PIPES AND ARM TO CAGE CONNECTION SEE DRAWING NO. C033440038.
  3. FOR ERECTION OF SKIPPING MECHANISM, SEE DRAWING NO. C033440045.
  4. FOR ERECTION OF PLATFORM, WALKWAY, FLOOR PLATE, AND RELATED HANDRAILS SEE DRAWING NO. C033440026.
  5. THE INSTALLATION OPERATION AND MAINTENANCE INSTRUCTION MANUAL MUST BE STUDIED PRIOR TO STARTING ERECTION OF THIS EQUIPMENT.
  6. PLACE ITEM 32 OVER CUSTOMER'S DISCHARGE PIPE BEFORE INSTALLING ITEM 31.
  7. ATTACH ITEM No. 63 TO BRIDGE SO AS NOT TO LOSE IT.



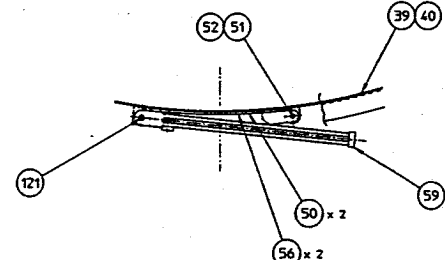
**RAKE CAMBER DIAGRAM**



**COLUMN ILLUSTRATION**

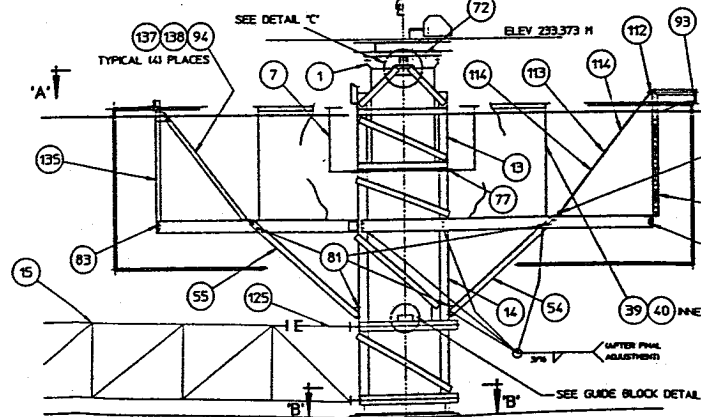


**DETAIL "C"**



**DETAIL "E"**

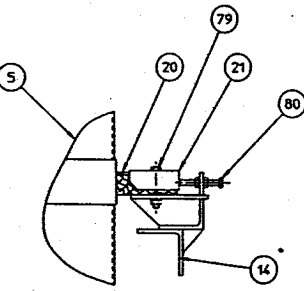
TYPICAL (2) PLACES WITH ITEM No. 50  
TYPICAL (2) PLACES WITH ITEM No. 56



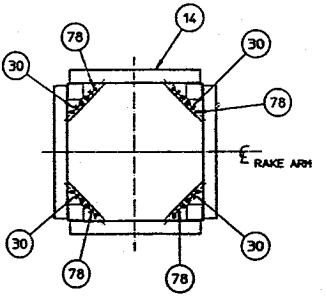
**SECTION "D - D"**

USE TURNBUCKLE ITEM #113 TO SQUARE ITEM # 136 TO ITEM # 63.

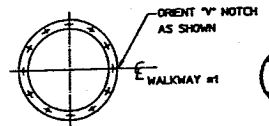
USE WITH DRAWING NUMBERS C033440044, C033440045, C033440038, C033440026 & 42700



**GUIDE BLOCK DETAIL**



**SECTION "B - B"**



CUSTOMER	: COMSTOCK CANADA
LOCATION	: CITY OF WINNIPEG (SOUTH END PLANT)
CUST. P.O. No.	: 820371-19

		Housheer Corvax
This drawing and all information herein is the property of Eimco Process Equipment and is confidential and shall not be used, copied, or disseminated without the written consent of Eimco Process Equipment.		
DO NOT SCALE PRINTS	DATE: AUG 14/91	GENERAL ERECTION 150' DIA. x 15' S.W.D SECONDARY CLARIFIER
DR. NO.: GE	BY:	C033440039
CHECKED:	DATE:	
APPROVED:		