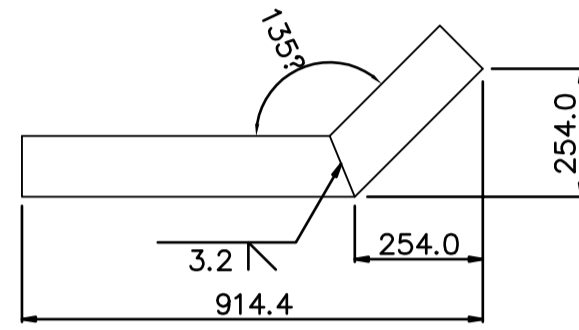
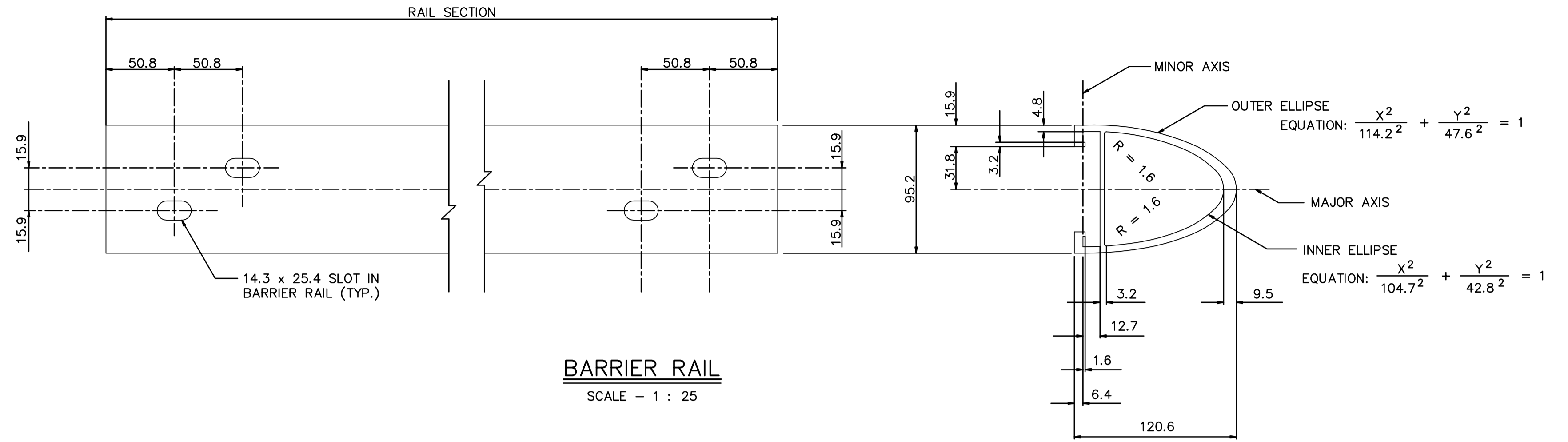


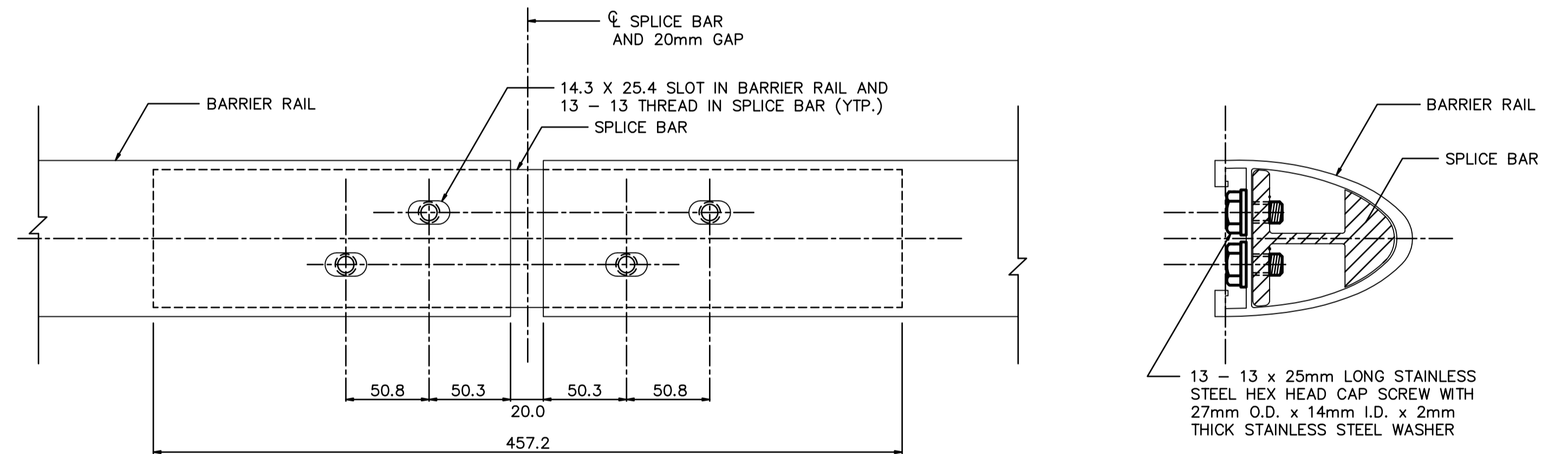
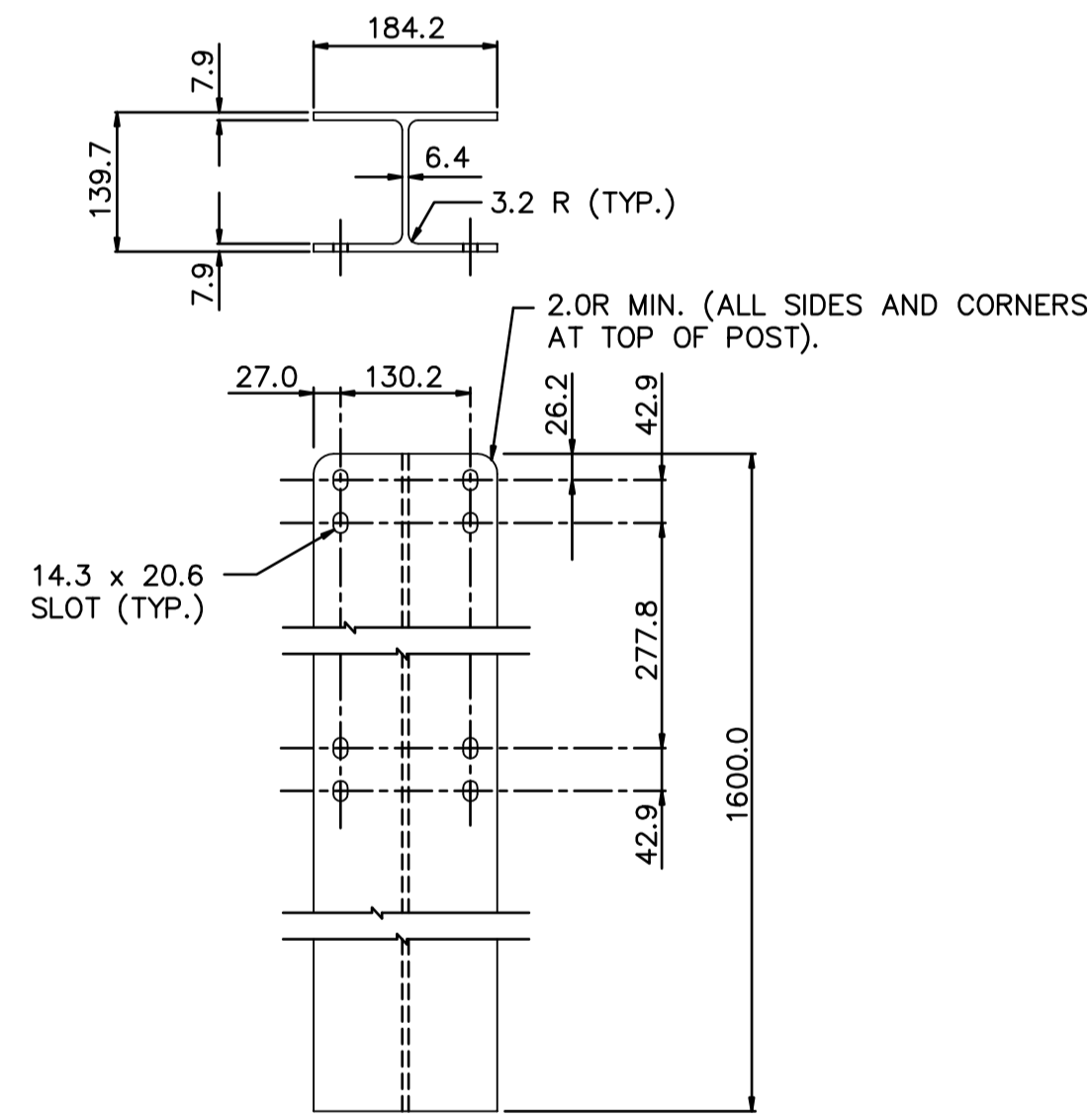
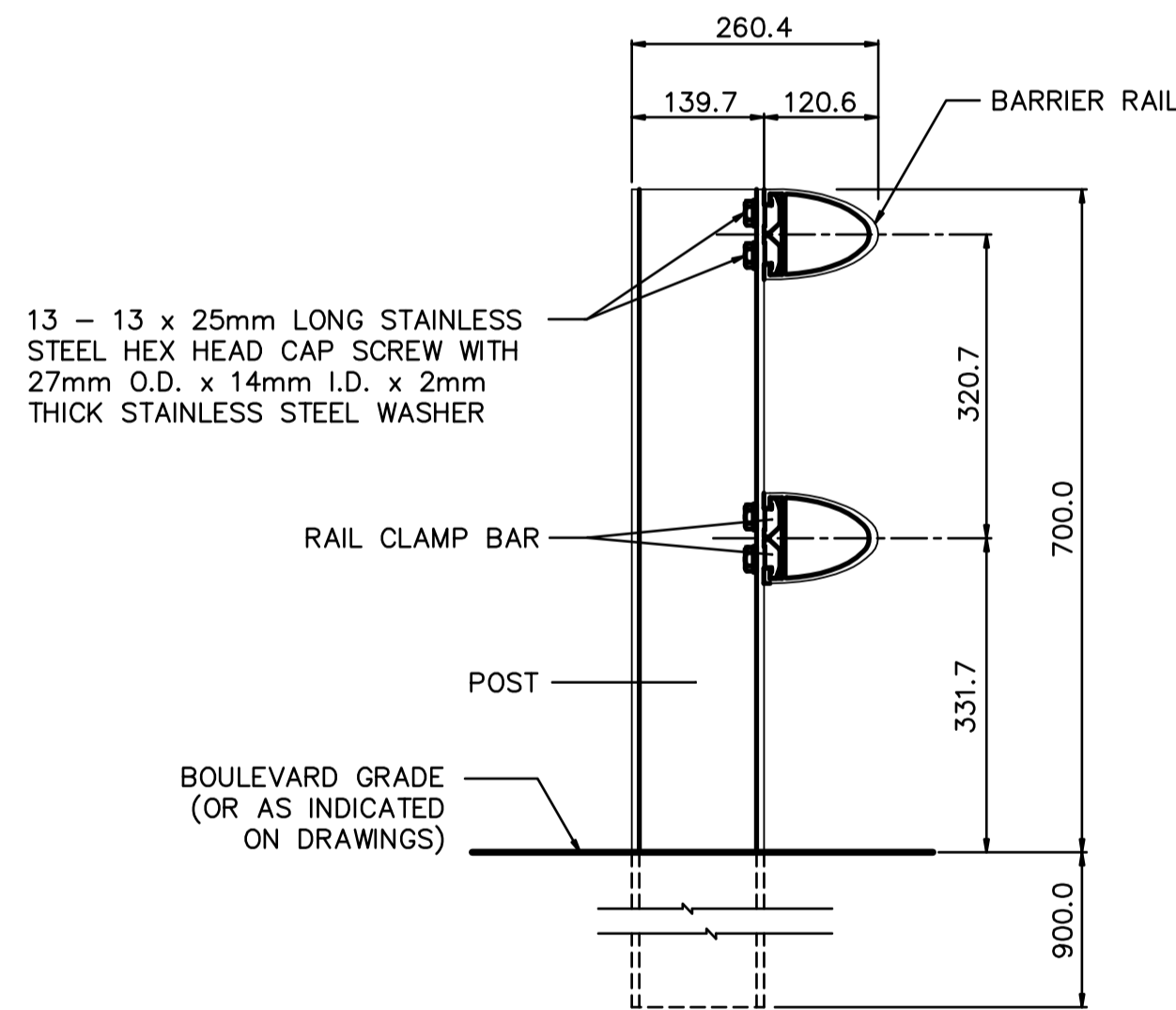
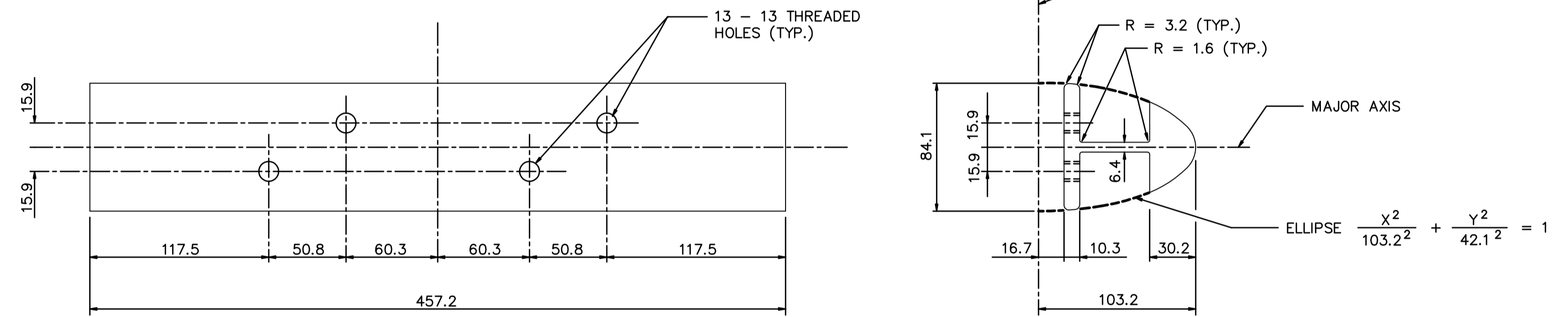
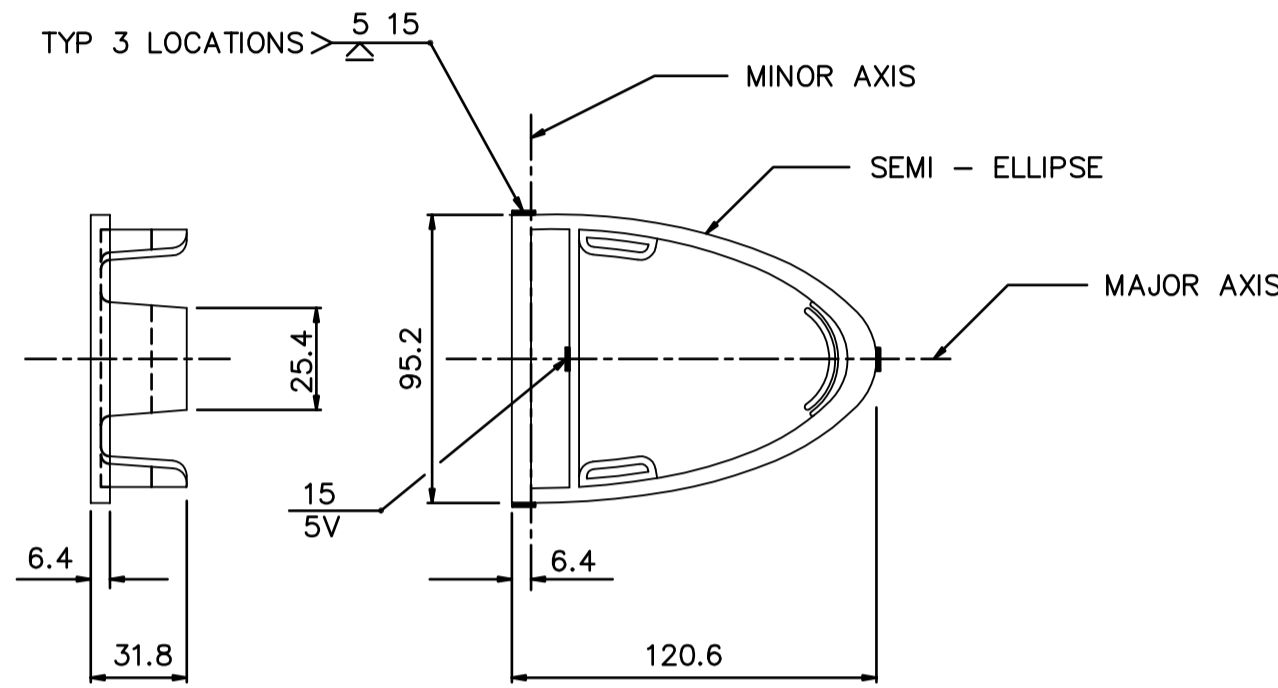
RAIL CLAMP BAR
SCALE - 1 : 25



PLAN

FRONT ELEVATION

TERMINAL END
(FABRICATED FROM BARRIER RAIL)
SCALE - 1 : 150



DRAWING REDUCED NOT TO SCALE

MATERIAL SPECIFICATION

1. ALUMINUM RAILS, POSTS, SPLICE BARS, AND RAIL END CAPS SHALL CONFORM TO ASTM B221, ALLOY 6061 - T6, OR ALLOY 6351 - T6.
2. TYPE 316. STAINLESS STEEL WASHERS SHALL CONFORM TO ASTM A296, TYPE 316.
3. CAP SCREWS SHALL CONFORM TO ASTM A276, TYPE 316 STAINLESS STEEL.
4. ANTI-SEIZE COATING TO BE APPLIED TO ALL THREADED COMPONENTS WHEN BEING ASSEMBLED, i.e. LPS-3-MANUFACTURED BY HOLT LLOYD (CANADA) LTD., MARKHAM, ONTARIO L3R 2Z3
5. TWO COATS, EACH 1mm IN THICKNESS OF ALKALI-RESISTANT BITUMINOUS PAINT SHALL BE APPLIED ON THE SURFACES OF POSTS AND RAILS THAT ARE TO BE IN CONTACT WITH THE GROUND.

METRIC
ALL DIMENSIONS SHOWN ARE IN MILLIMETRES

B.M. ELEV.	DESIGNED BY N/A		ENGINEER'S SEAL N/A		MARYLAND TWIN BRIDGES REHABILITATION PROJECT WEST BRIDGE REHABILITATION	CITY DRAWING NUMBER B108-05-30
	DRAWN BY N.B.G. / K.C.					SHEET 30 OF 33
	CHECKED BY R.A.W.				BALANCED SHOULDER BARRIER STANDARD DETAILS	
	APPROVED BY			CONSULTANT PROJECT NO. 04-3021-2000		
2 ISSUED FOR TENDER 01/31/05 NBG	HOR. SCALE AS NOTED	RELEASED FOR CONSTRUCTION				
1 ISSUED FOR CITY REVIEW 12/17/04 RAW	VERTICAL	DATE				
NO. REVISIONS	DATE	BY	DATE	DEC. 2004		