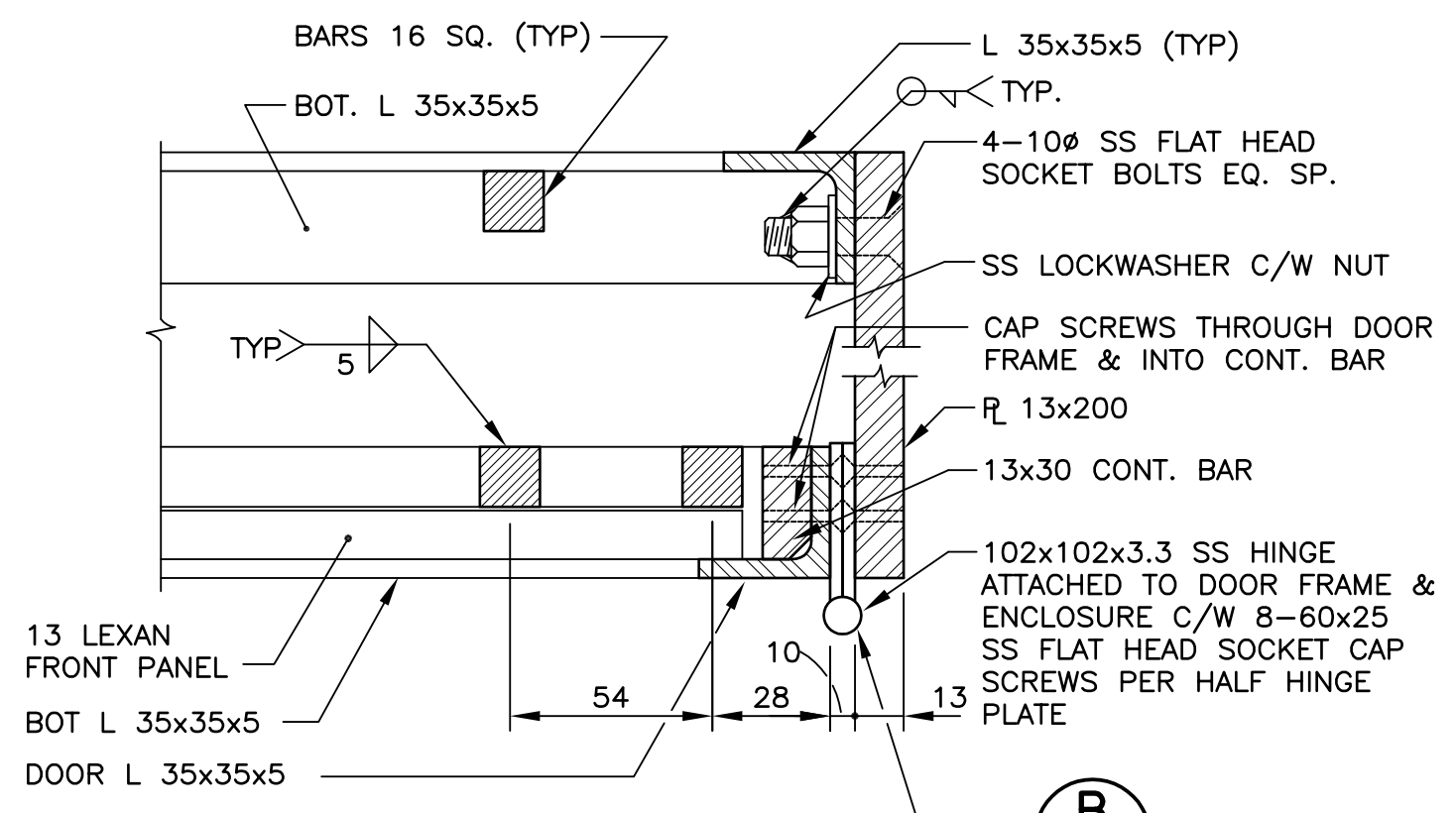
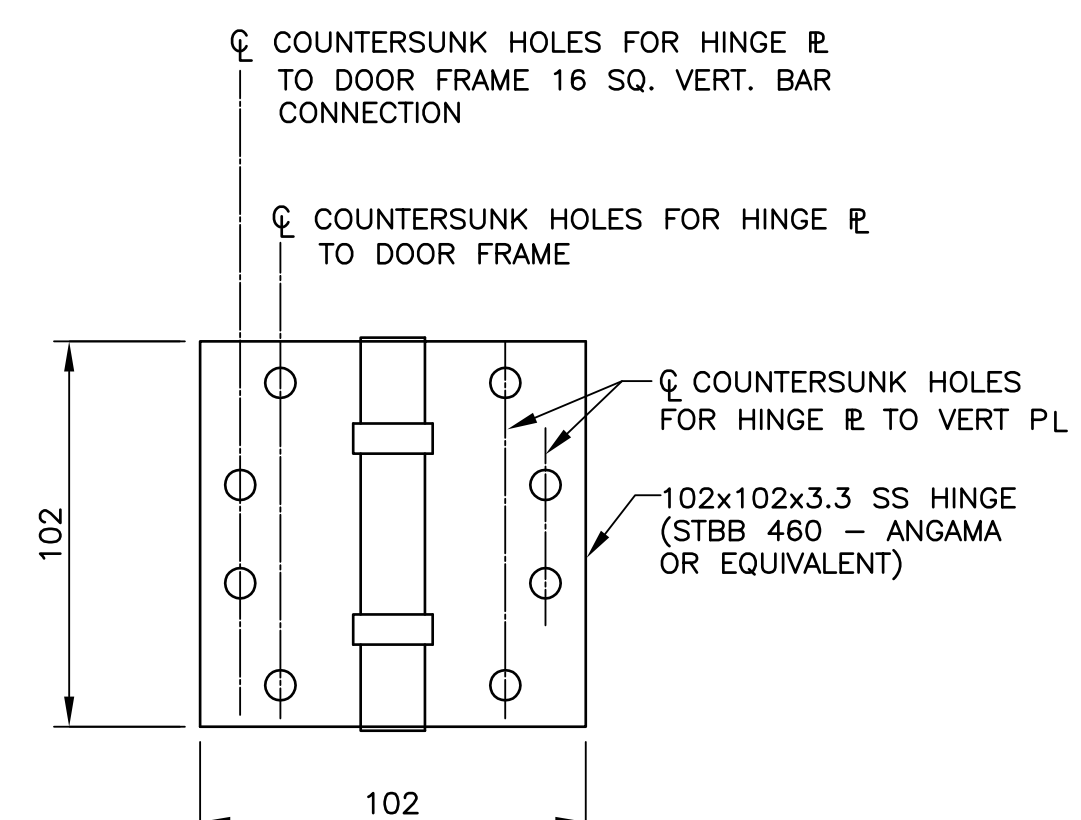


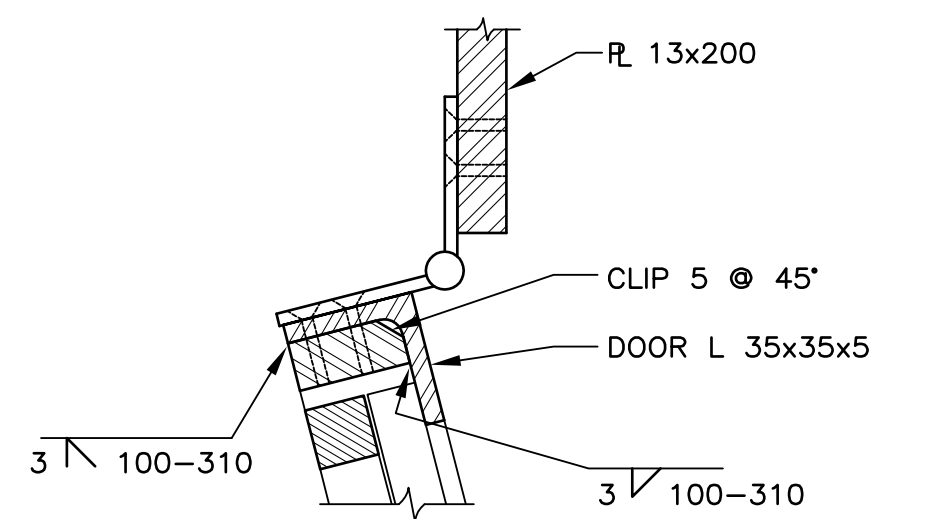
SECTION 1
SCALE 1:10



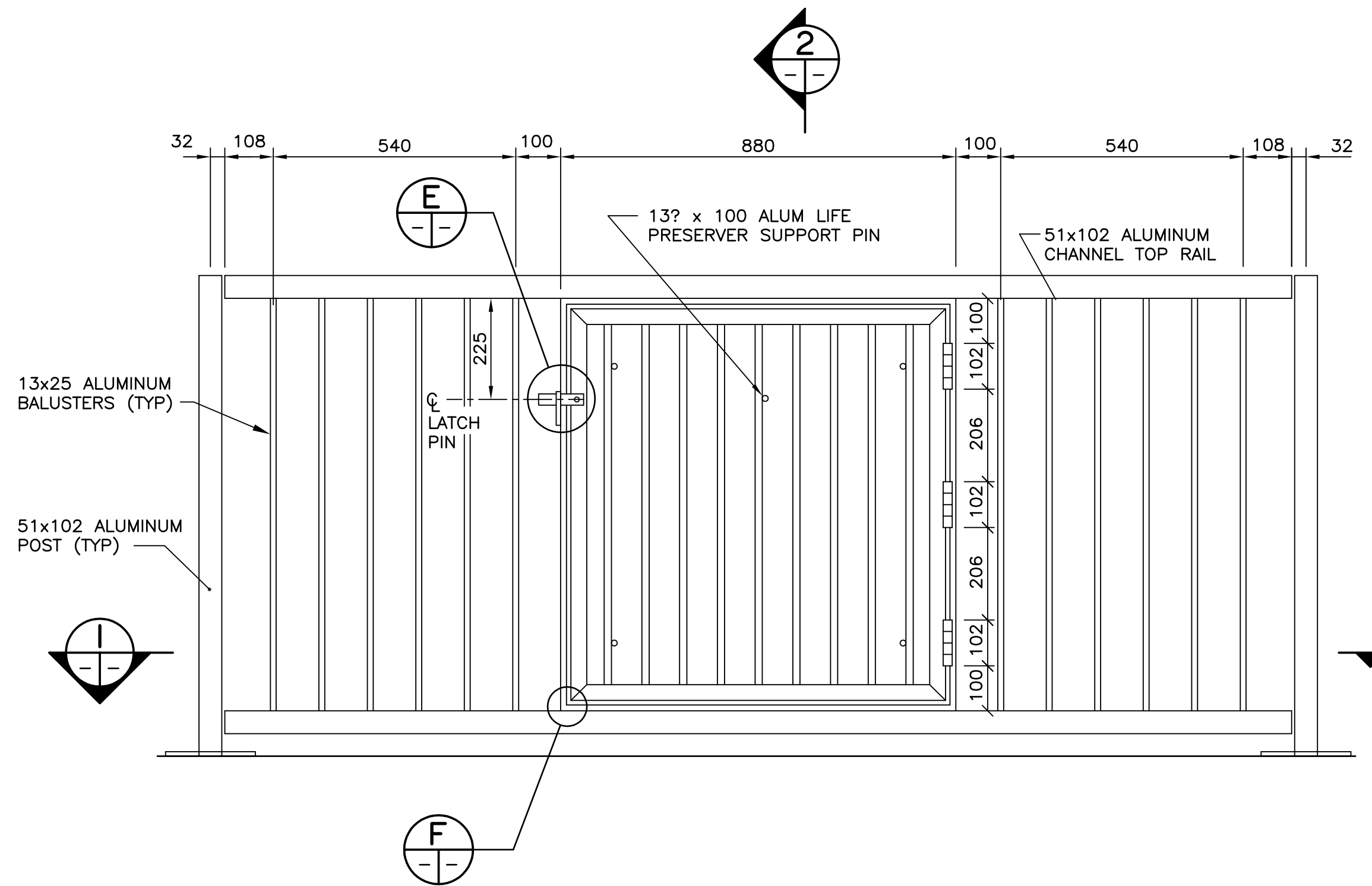
DETAIL A
SCALE 1:2



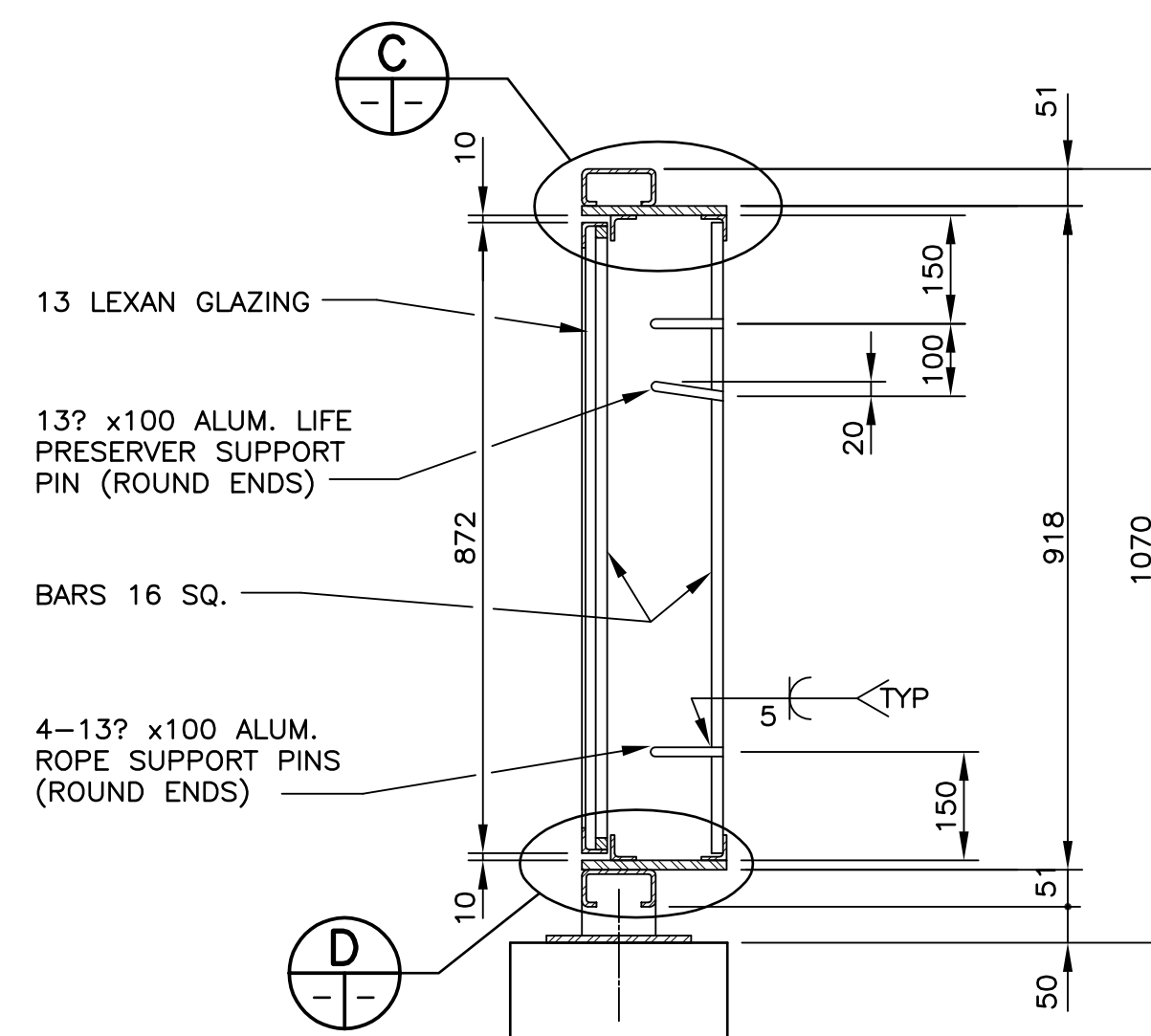
DETAIL B
SCALE 1:2



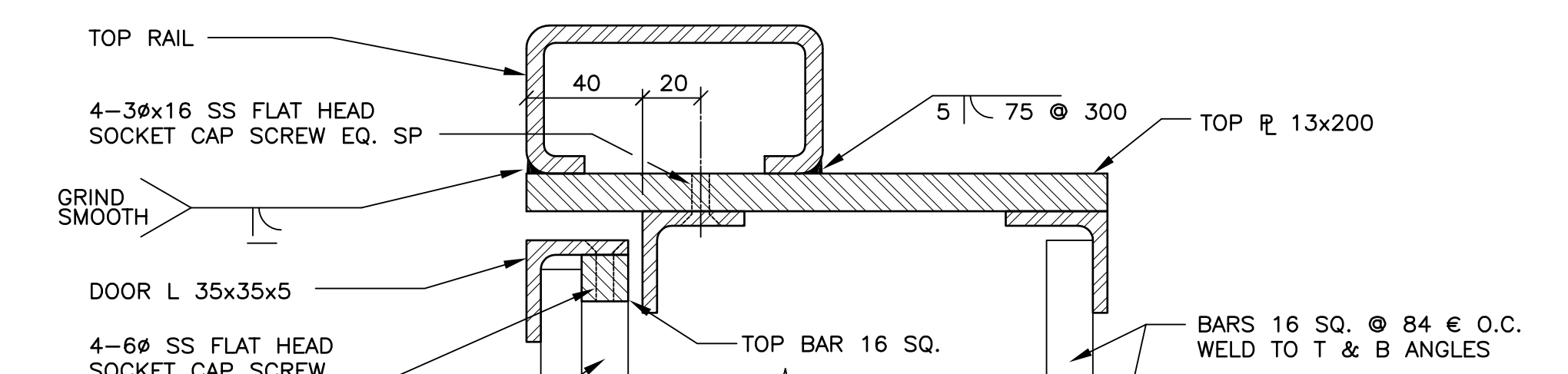
DETAIL G
SCALE 1:2



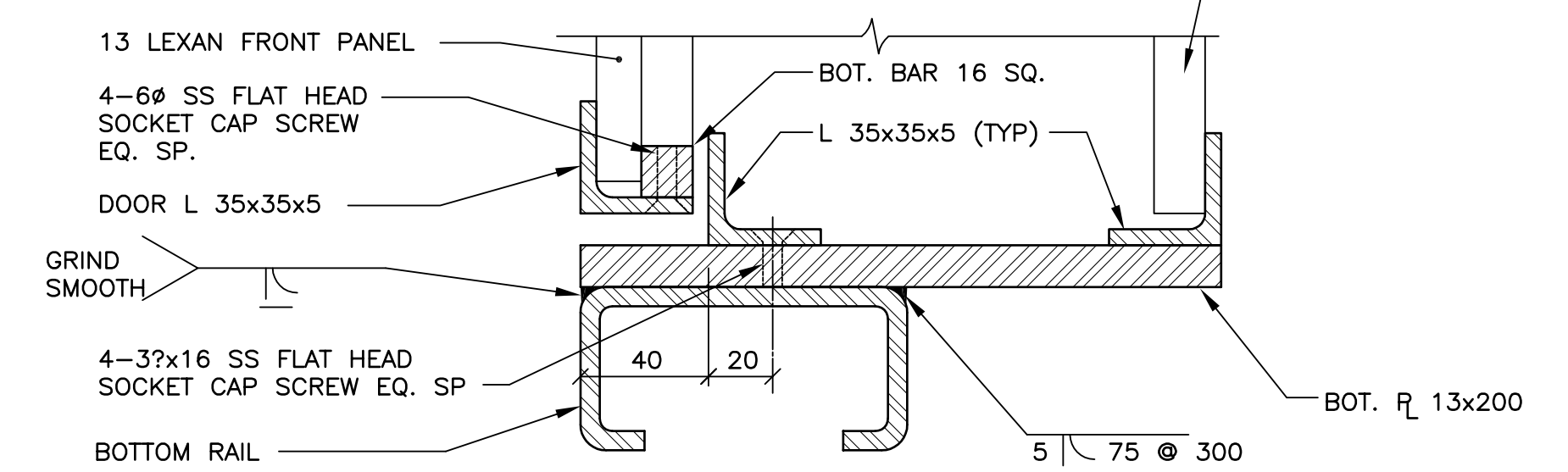
FRONT ELEVATION (PANEL "E")
SCALE 1:10



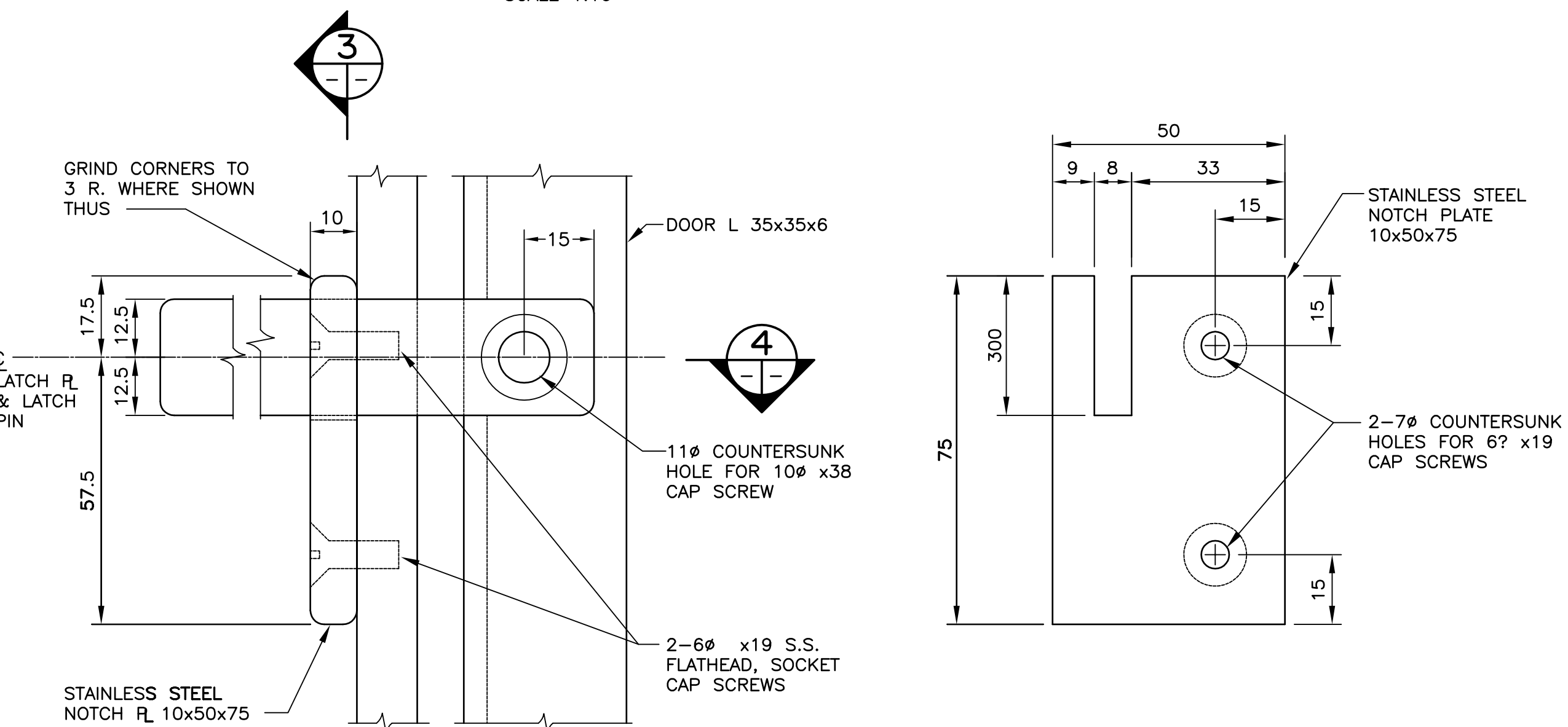
SECTION 2
SCALE 1:10



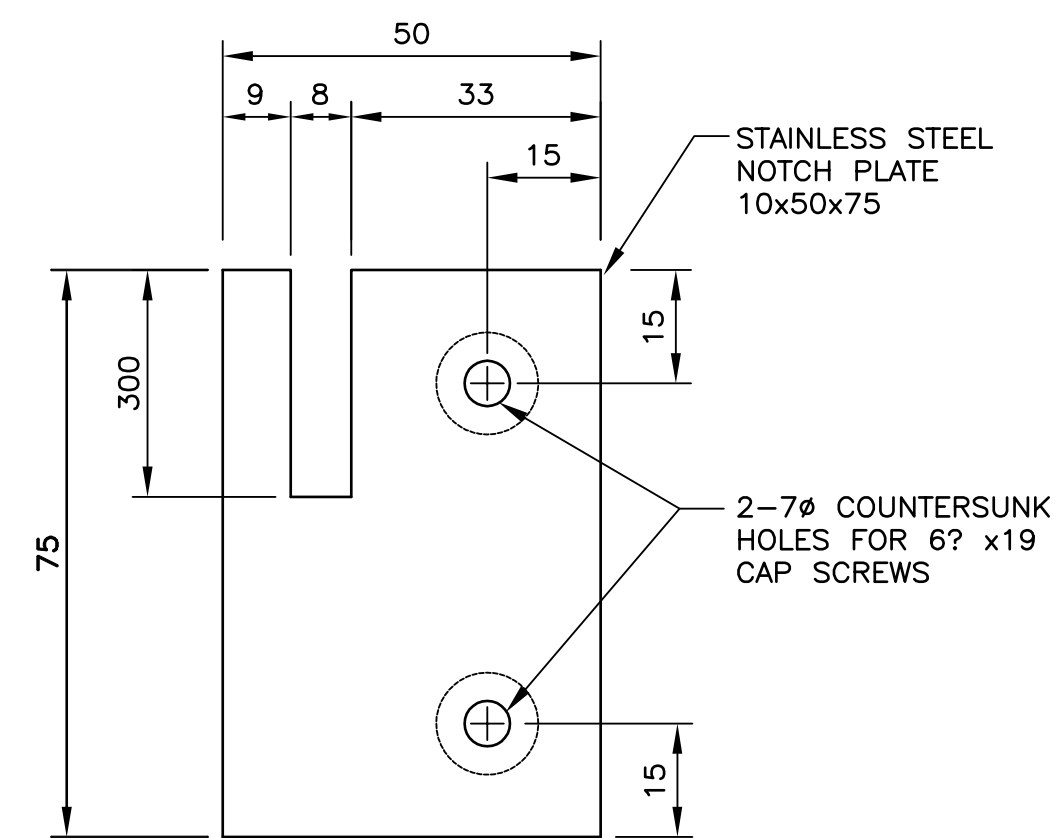
DETAIL C
SCALE 1:2



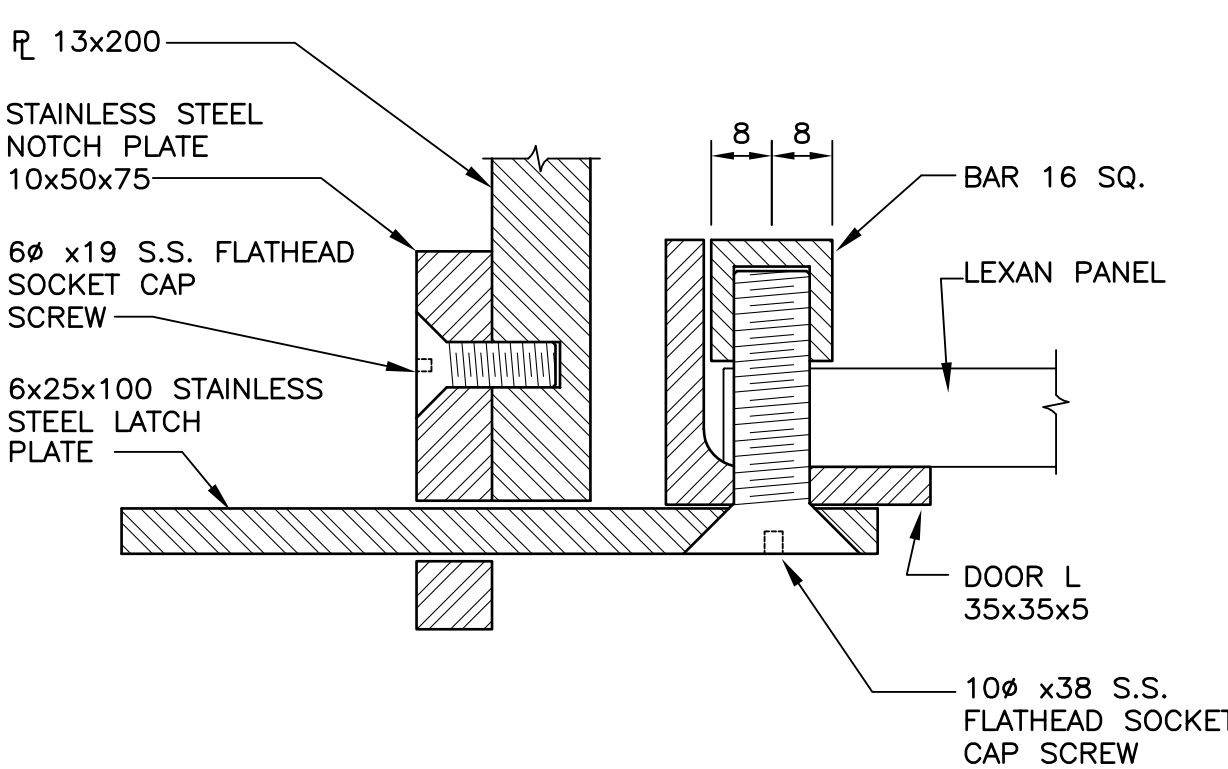
DETAIL D
SCALE 1:2



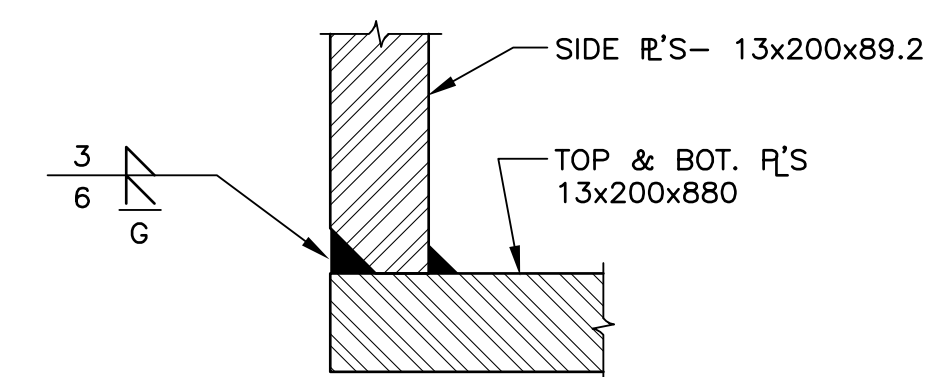
DETAIL E
SCALE 1:1



SECTION 3
SCALE 1:1



SECTION 4
SCALE 1:1



DETAIL F
SCALE 1:1

TYPICAL JOINT AT CORNERS OF 13x200 ENCLOSURE PLATES

NOTES:

1. ALUMINUM ALLOY EXTRUDED BAR AND SHAPE SHALL CONFORM TO THE REQUIREMENTS OF ASTM B221M-83 ALLOY 6061-T6 OR ALLOY 6351-T6.
2. ALUMINUM ALLOY SHEET AND PLATE SHALL CONFORM TO THE REQUIREMENTS OF ASTM B209M-83 ALLOY 6061-T6 OR ALLOY 6351-T6.
3. ALUMINUM FILLER ALLOYS FOR WELDED CONSTRUCTION SHALL BE ONE OF THE FOLLOWING: ER4043, ER5183, ER5356, ER5554, ER5556, AND ER5654.
4. DRILL AND TAP HOLES FOR STAINLESS STEEL FLAT HEAD SOCKET CAP SCREWS.
5. INSTALL STAINLESS STEEL CAP SCREWS THROUGH ENTIRE THICKNESS OF ADJOINING MEMBER, THEN CUT AND GRIND FLUSH.

B.M. ELEV.	DESIGNED BY	A.S.D.
	DRAWN BY	N.B.G.
	CHECKED BY	R.A.W.
	APPROVED BY	
2 ISSUED FOR TENDER	01/31/05	NBG
1 ISSUED FOR CITY REVIEW	12/17/04	RAW
NO. REVISIONS	DATE	BY
	HOR. SCALE	AS NOTED
	VERTICAL	
	DATE	DEC. 2004

DILLON CONSULTING

ENGINEER'S SEAL
PROVINCE OF MANITOBA
A.S. DERAJ
REGISTERED PROFESSIONAL ENGINEER

THE CITY OF WINNIPEG
PUBLIC WORKS DEPARTMENT

Winnipeg

MARYLAND TWIN BRIDGES REHABILITATION PROJECT
WEST BRIDGE REHABILITATION

ALUMINUM PEDESTRIAN HANDRAIL LIFE PRESERVER ENCLOSURE

CITY DRAWING NUMBER
B108-05-29
SHEET **29** OF **33**

CONSULTANT PROJECT NO.
04-3021-2000