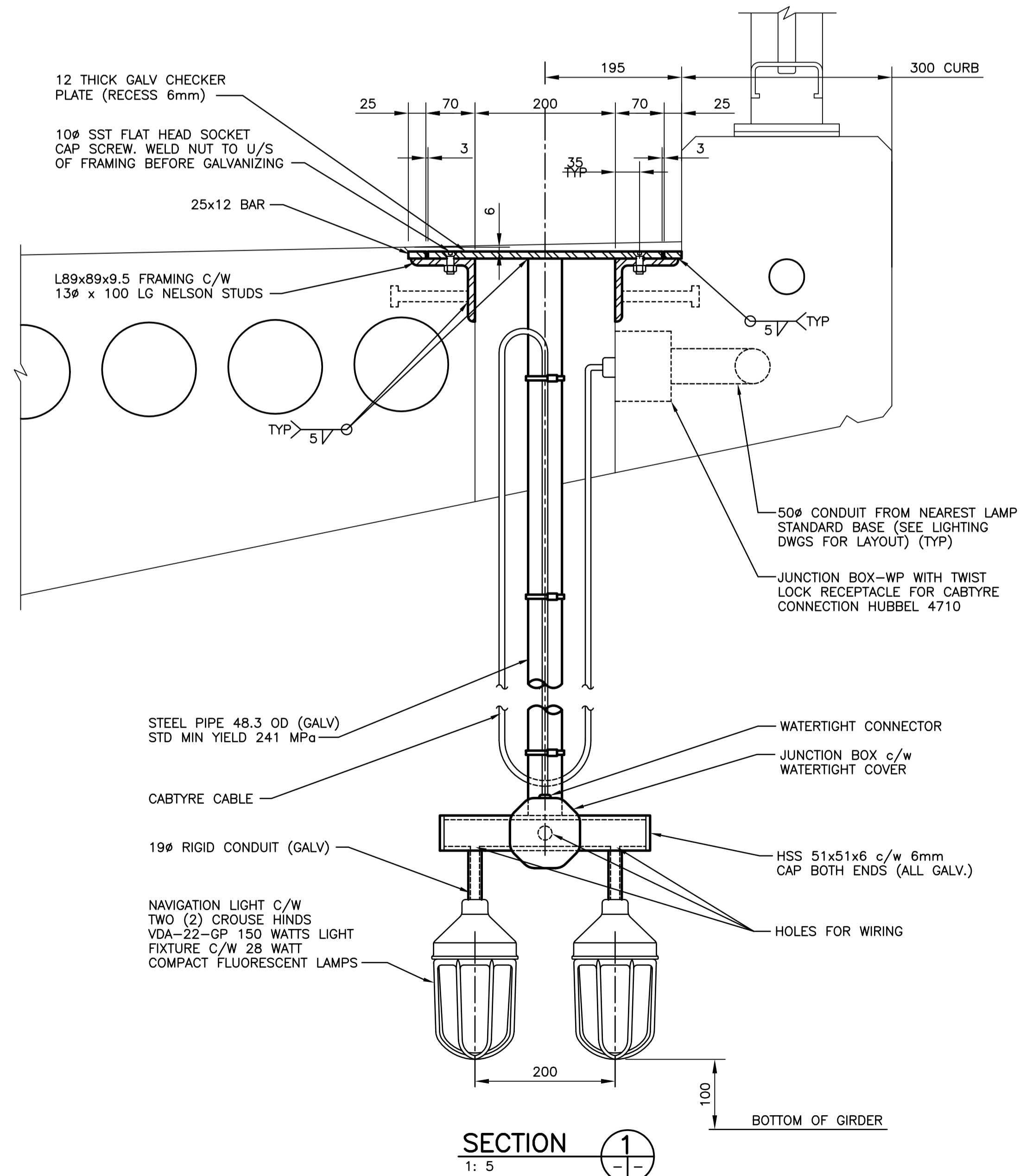
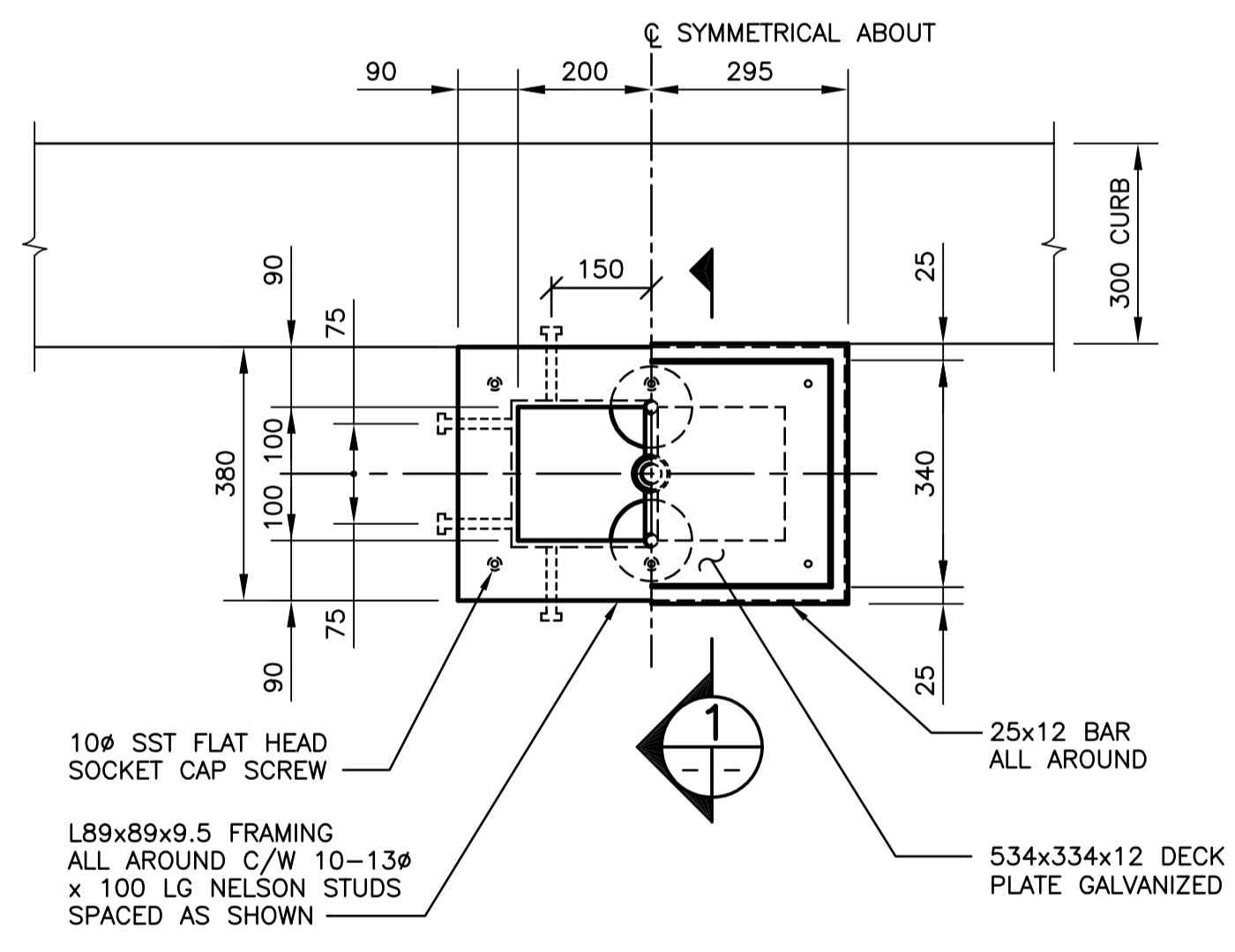


PLAN  
1: 250



SECTION  
1: 5



PLAN-DETAIL  
1: 10 (AT 2 LOCATIONS)

- NOTES:
1. STEEL SHALL BE FABRICATED CONFORMING TO CSA G40.21-M92, GRADE 300W. STEEL SHALL BE HOT DIP GALVANIZED AFTER FABRICATION IN ACCORDANCE WITH CSA G164 TO A NET RETENTION OF 600 g/m2.
  2. ALL FASTENERS, WASHERS, NUTS AND INSERTS SHALL BE STAINLESS STEEL.
  3. DAMAGE TO GALVANIZED ITEMS SHALL BE REPAIRED USING "GALVALLOY" PROCEDURE.
  4. JUNCTION BOX NOT SHOWN FOR CLARITY.

B.M. ELEV.		DESIGNED BY: RAW			
		DRAWN BY: NBG / KC			
		CHECKED BY: RAW			
		APPROVED BY:			
2	ISSUED FOR TENDER	01/31/05	NBG	HOR. SCALE: AS NOTED	CONSULTANT PROJECT NO. 04-3021-2000
1	ISSUED FOR CITY REVIEW	12/17/04	RAW	VERTICAL	
NO.	REVISIONS	DATE	BY	DATE	DEC. 2004
				RELEASED FOR CONSTRUCTION	DATE
					NAVIGATION LIGHTS PLAN, SECTION AND DETAIL
					CITY DRAWING NUMBER B108-05-25 SHEET 25 OF 33