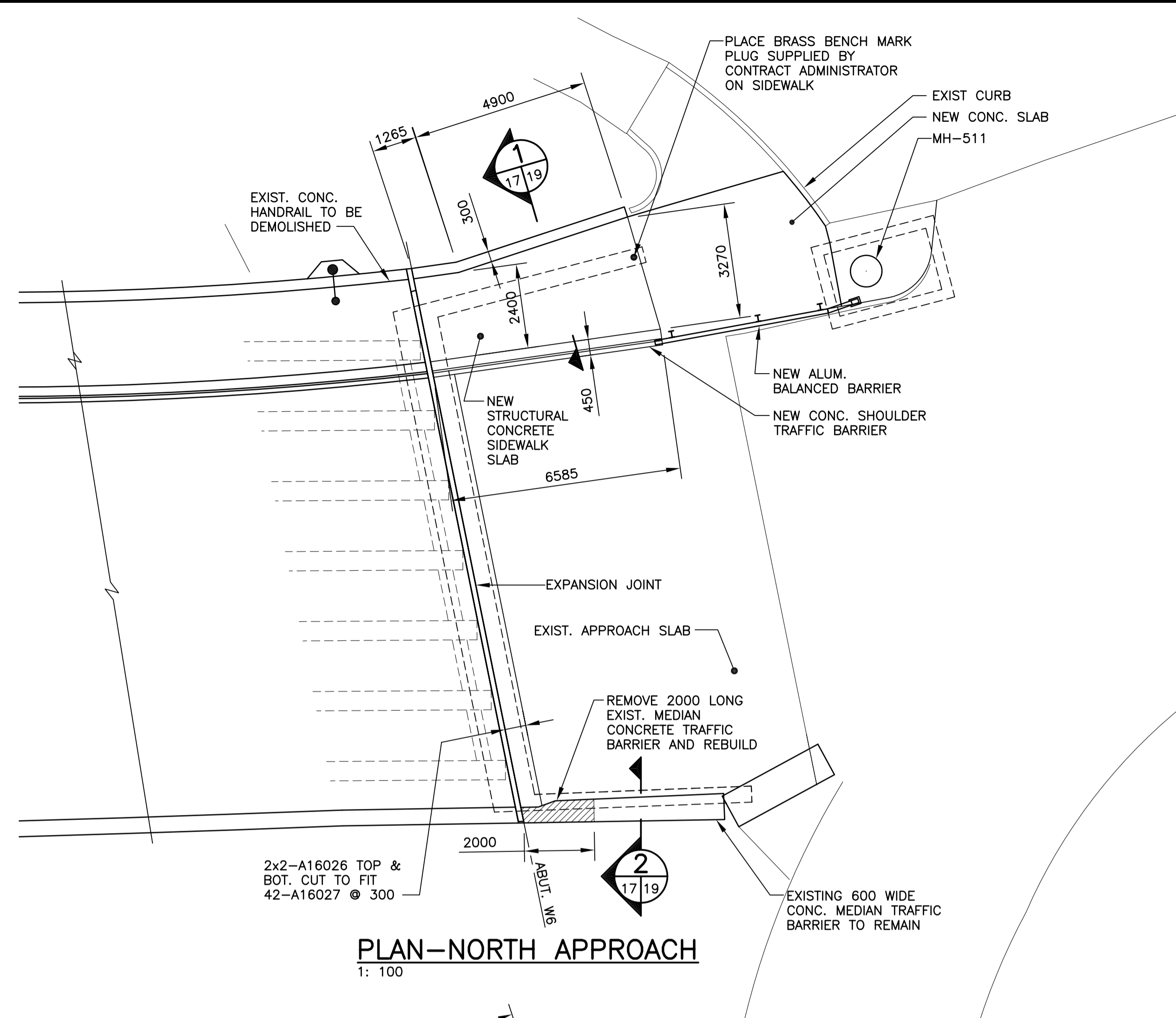
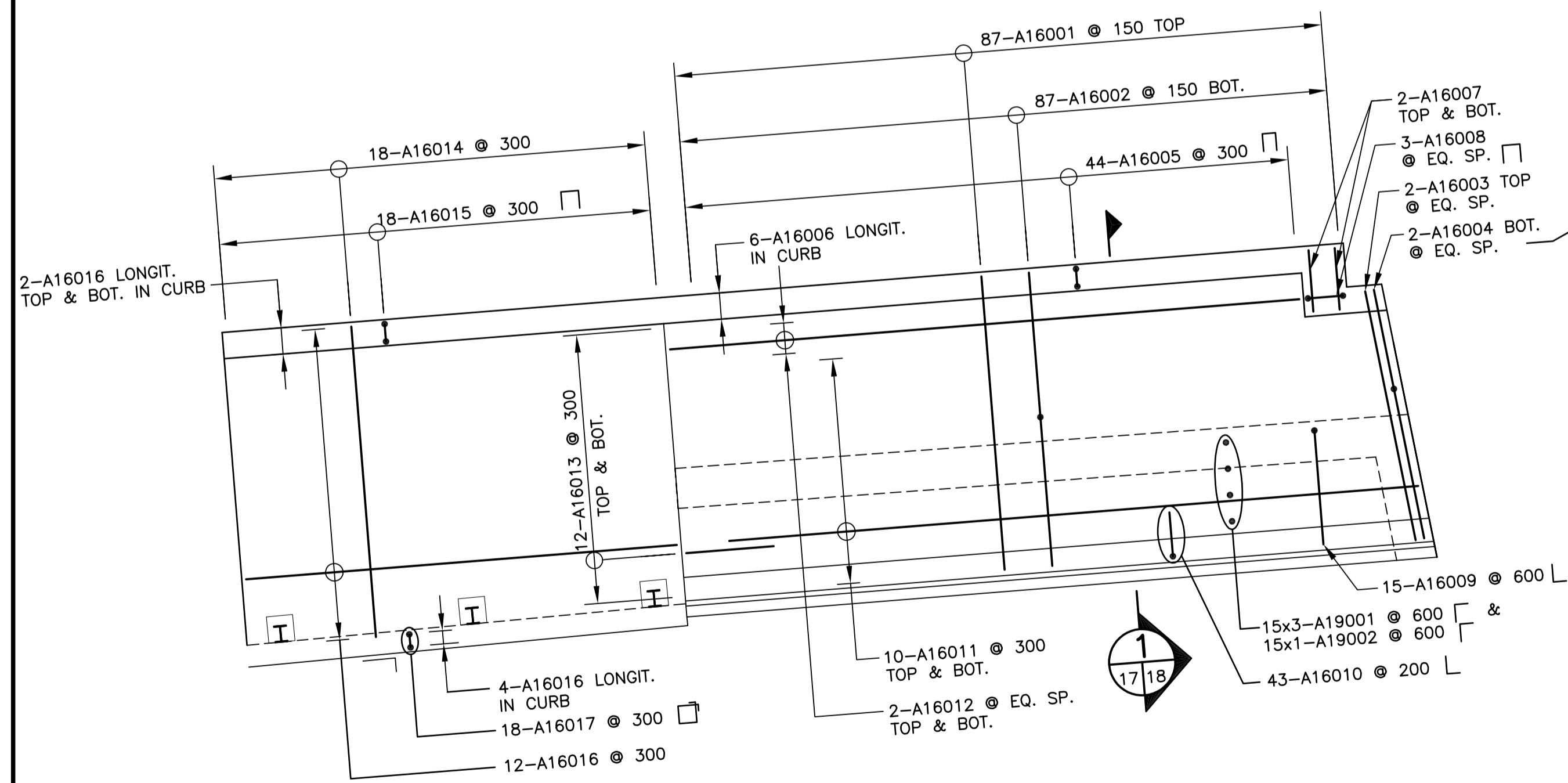


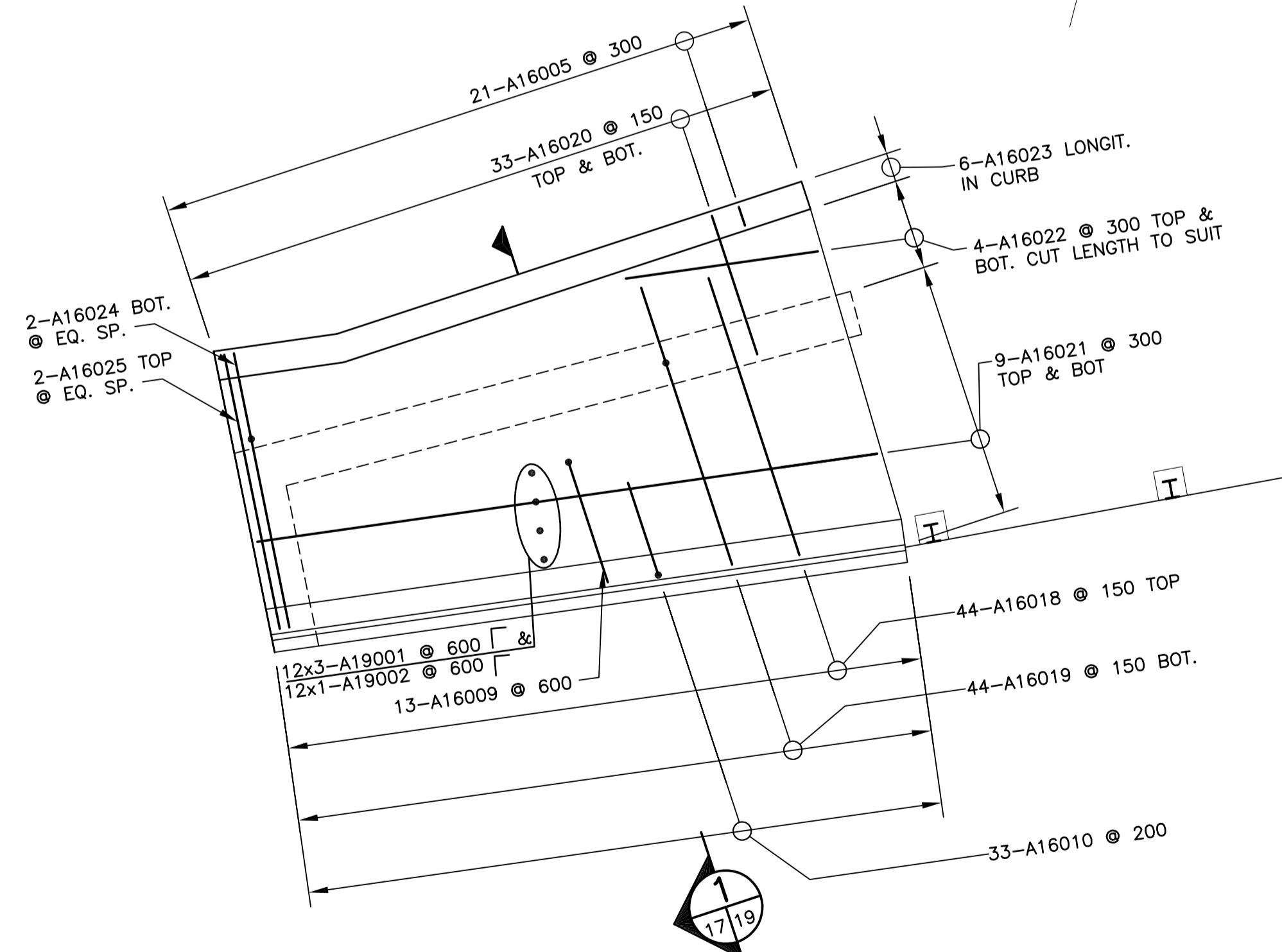
PLAN-SOUTH APPROACH
1: 100



PLAN-NORTH APPROACH
1: 100



REINFORCING-SIDEWALK SOUTH APPROACH
1: 50



REINFORCING-SIDEWALK NORTH APPROACH
1: 50

B.M. ELEV.		DESIGNED BY	A.S.D.				MARYLAND TWIN BRIDGES REHABILITATION PROJECT WEST BRIDGE REHABILITATION	CITY DRAWING NUMBER	B108-05-17
		DRAWN BY	N.B.G. / K.C.					CONSULTANT PROJECT NO. 04-3021-2000	SHEET 17 OF 33
		CHECKED BY	R.A.W.						
		APPROVED BY							
		HOR. SCALE	AS NOTED						
		VERTICAL		RELEASED FOR CONSTRUCTION	DATE	DEC. 2004	PROPOSED APPROACHES		
2	ISSUED FOR TENDER	01/31/05	NBG						
1	ISSUED FOR CITY REVIEW	12/17/04	RAW						
NO.	REVISIONS	DATE	BY	DATE	DEC. 2004				