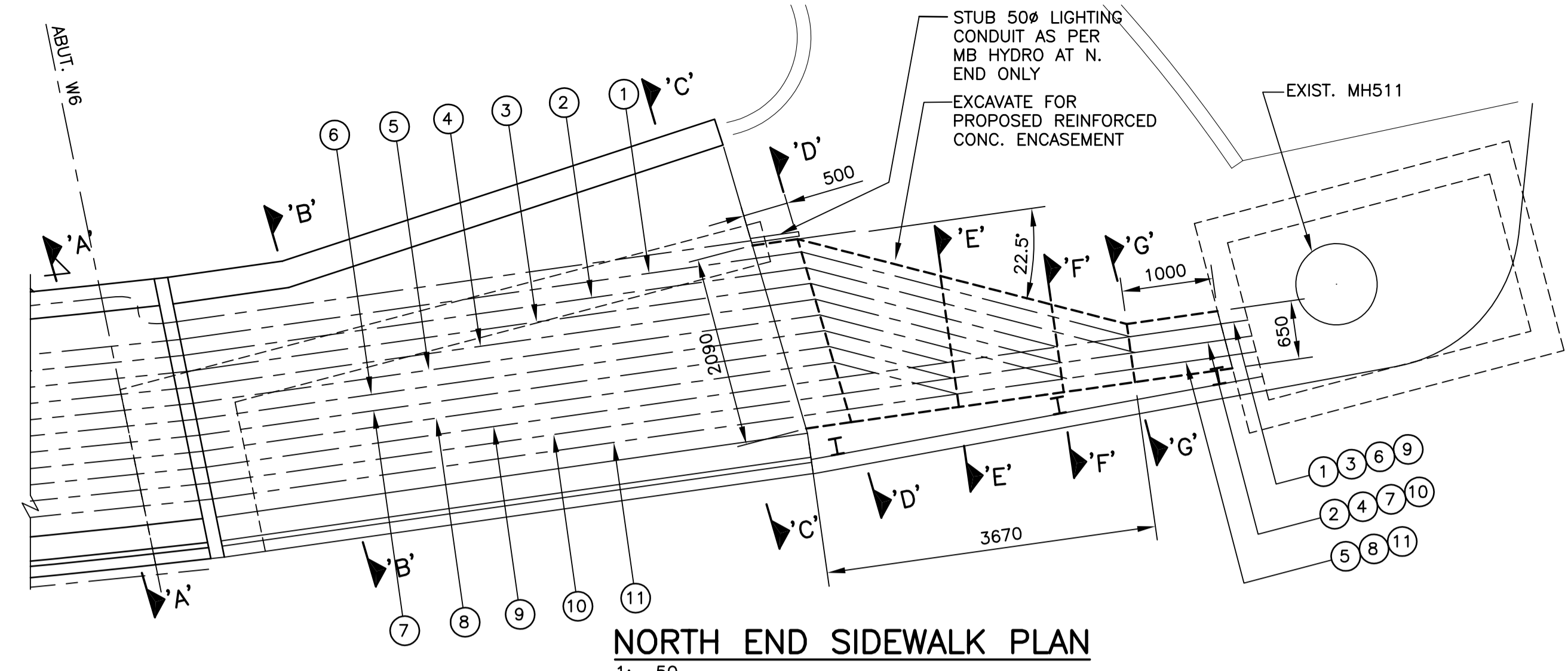
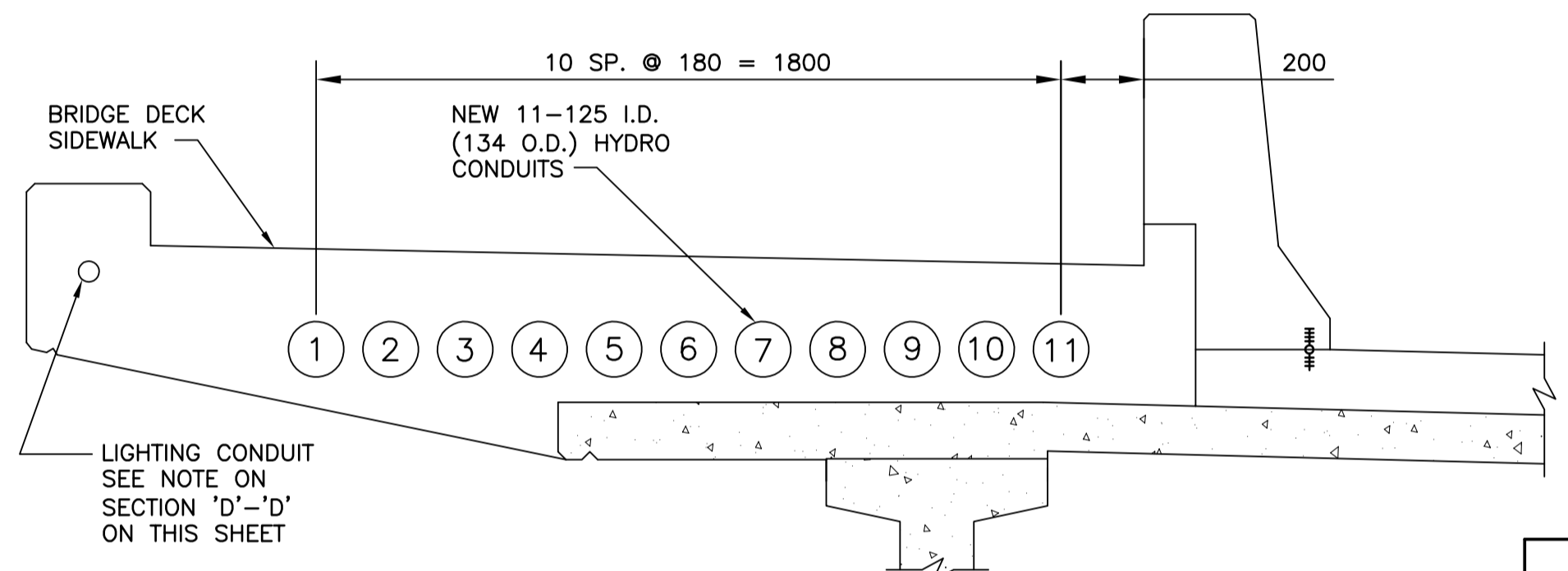


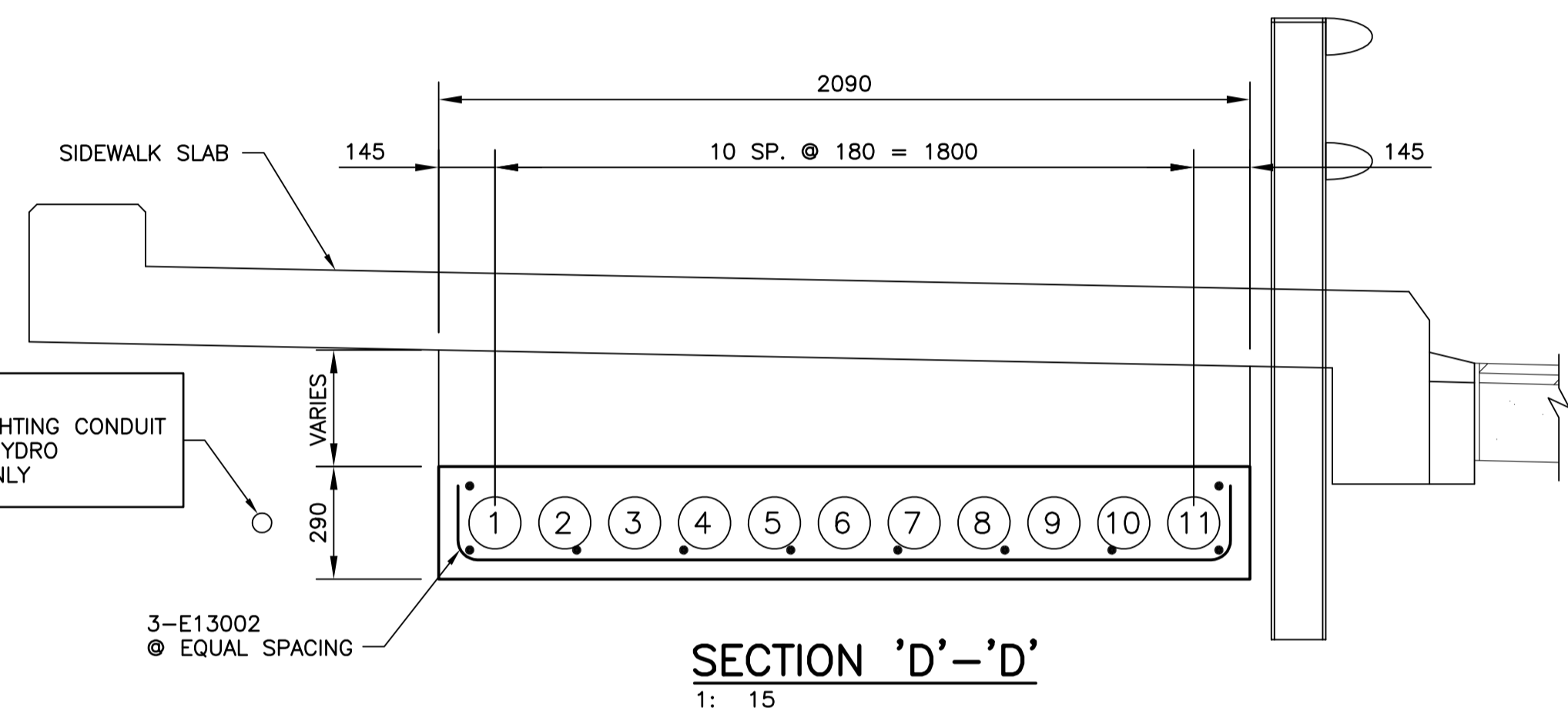
**SOUTH END SIDEWALK PLAN**  
1: 50



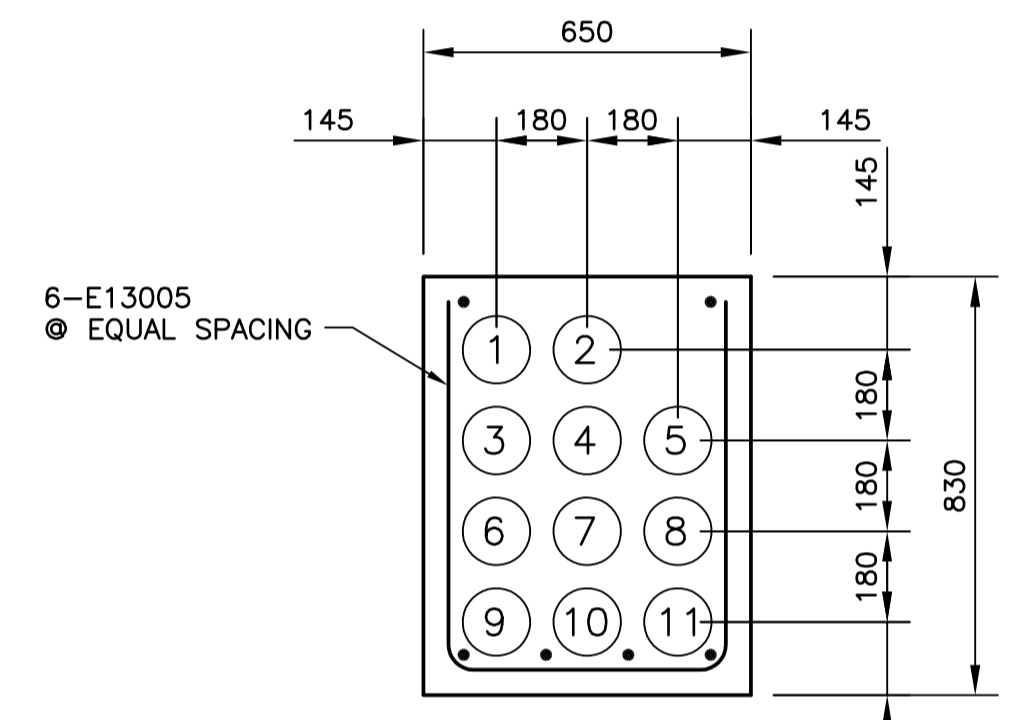
**NORTH END SIDEWALK PLAN**  
1: 50



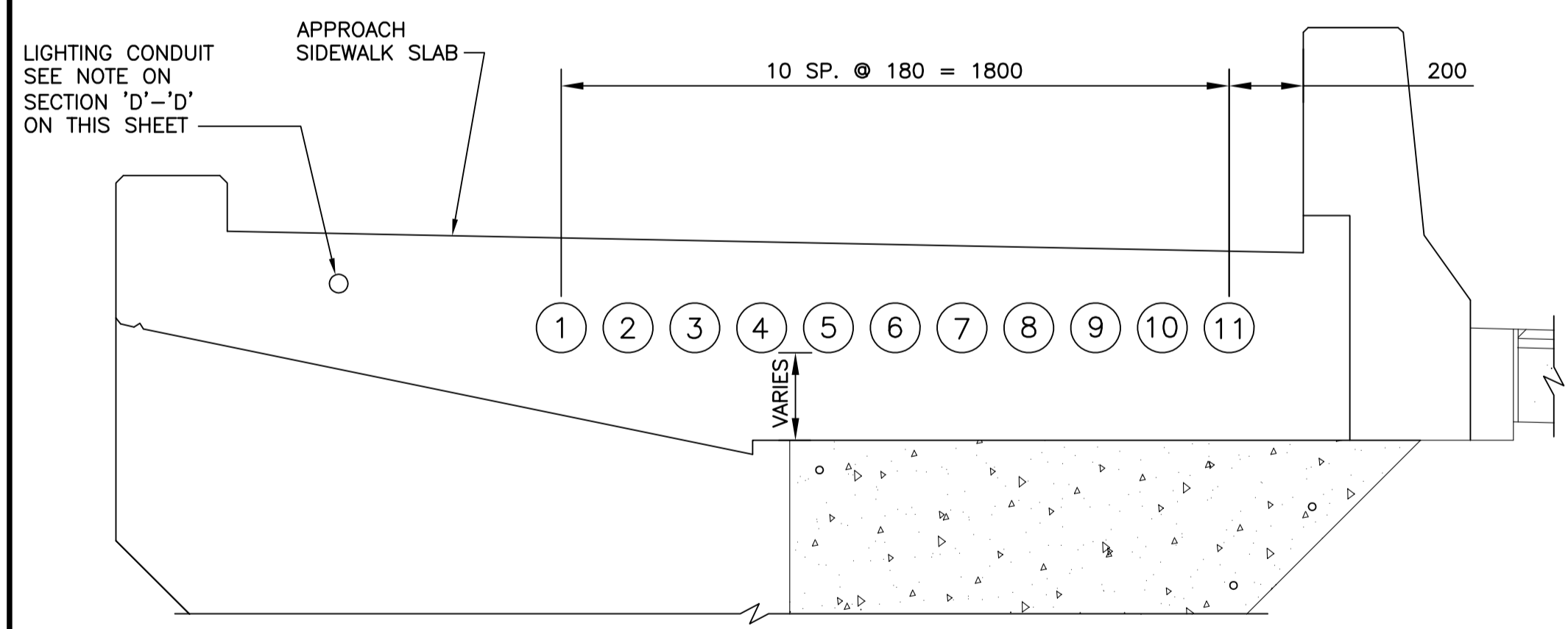
**SECTION 'A'-'A'**  
1: 15



**SECTION 'D'-'D'**  
1: 15



**SECTION 'G'-'G'**  
1: 15



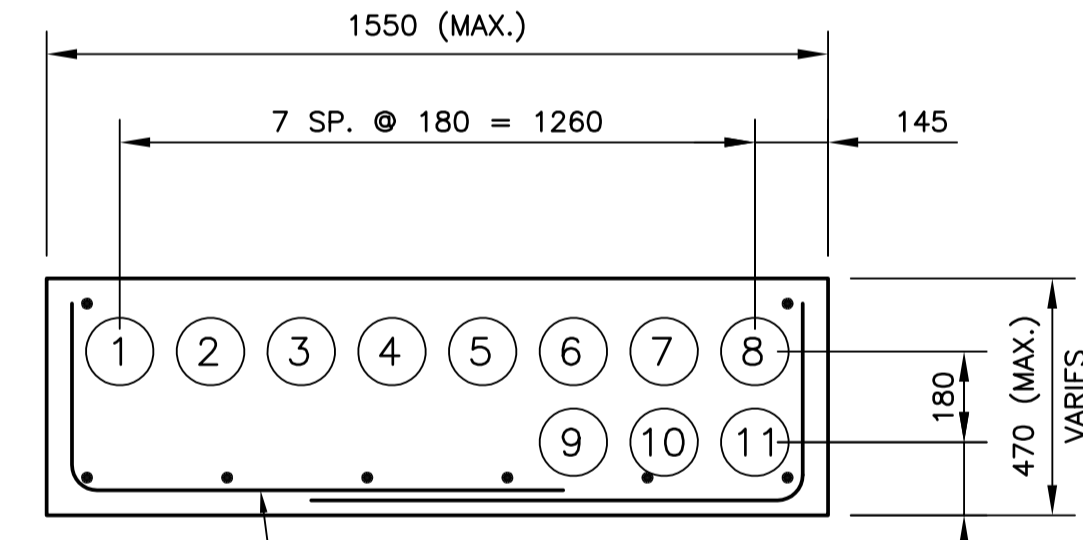
**SECTION 'B'-'B'**  
1: 15

BILL OF MATERIAL (FOR 134 O.D. CONDUITS)						
CONDUIT LINE NO.	TOTAL LENGTH	COUPLINGS	ELBOW JOINTS	SUPPLIED BY:		
			5 5/8" 22 1/2"	MB HYDRO	CONTRACTOR	
1	189000	63	4 10	X	X	
2	189000	63	4 10	X		
3	189000	63	4 10	X		
4	189000	63	4 10	X		
5	189000	63	4 10	X		
6	189000	63	4 10	X		
7	189000	63	4 10	X		
8	189000	63	4 10	X		
9	190000	63	4 8	X		
10	190000	63	4 8	X		
11	190000	63	4 8	X		

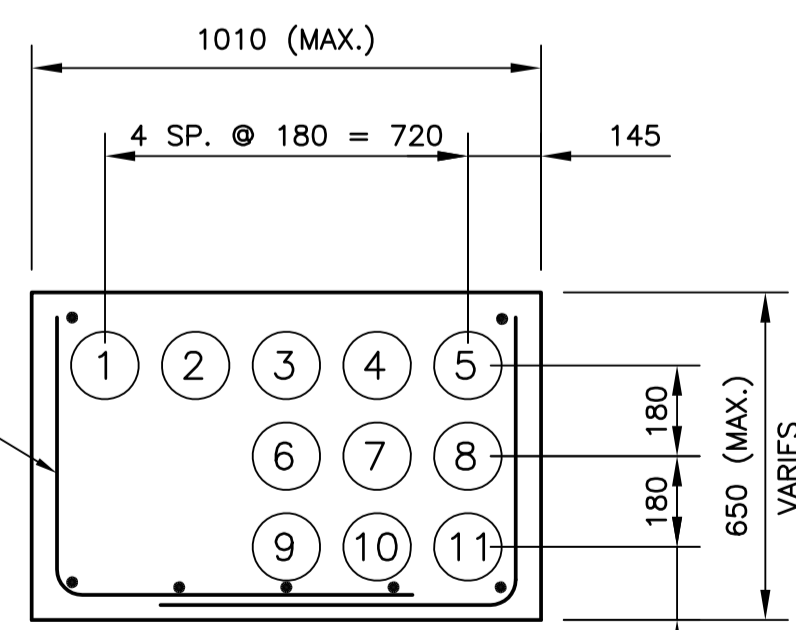
EXPANSION JT UNITS - 11 REQ'D ALL SUPPLIED BY CONTRACTOR  
No of COUPLINGS BASED ON STANDARD 3000 LONG CONDUIT LENGTHS.  
5 5/8" BEND ELBOWS (TO BE FITTED TO SUIT CONDUIT CHANGING ELEVATIONS @ CONC. ENCASEMENT)

**GENERAL NOTES:**

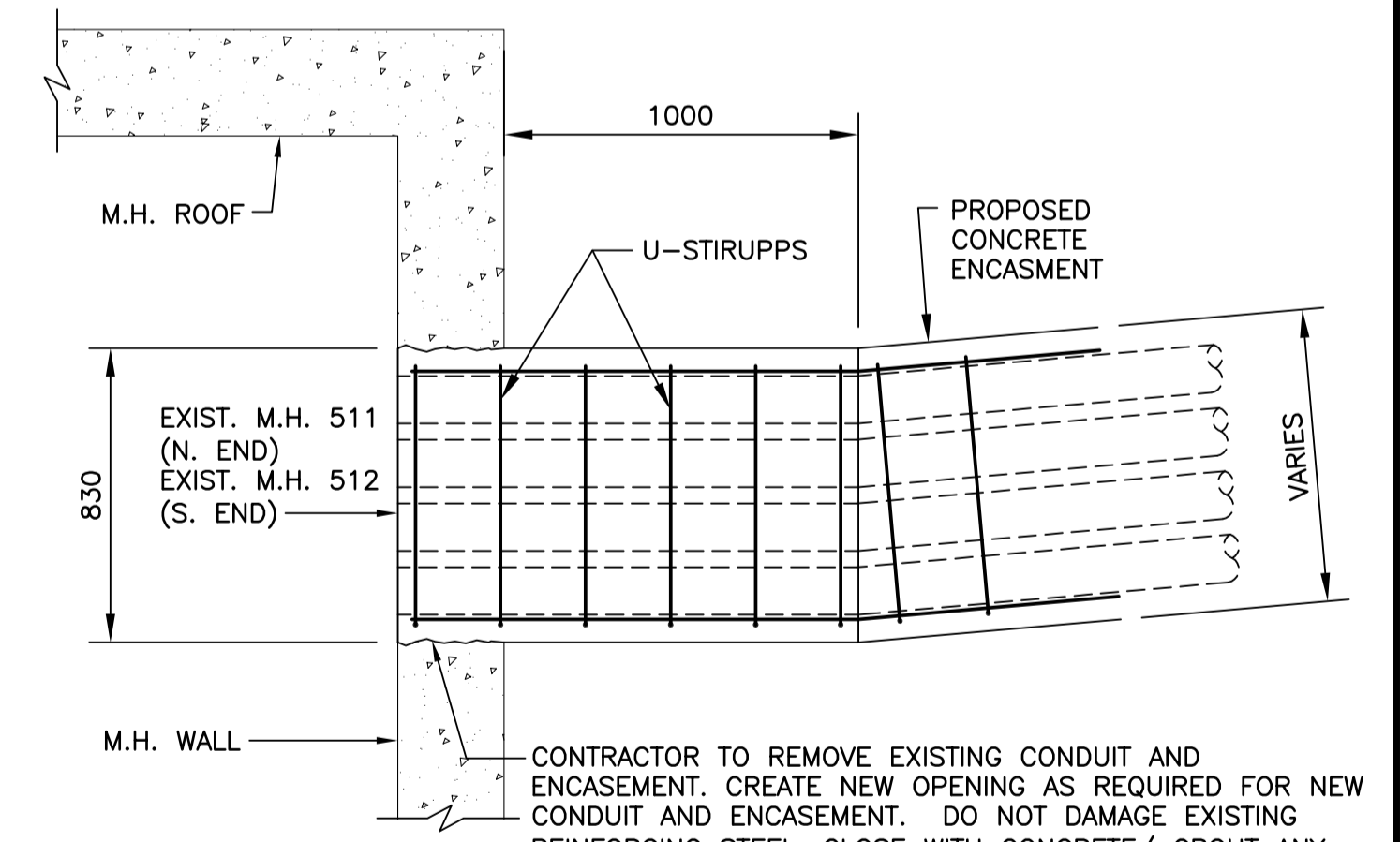
- FOR EVERY CONDUIT ENTRANCE INTO A MANHOLE THERE WILL BE REQUIRED.
  - 6-"U" STIRRUPS TYPE A (TO BE 10M DEFORMED BARS) WITH THE "H" DIMENSION 100mm LESS THAN THE WIDTH OF THE CONDUIT ENVELOPE.
  - STRAIGHT BARS TYPE B (3000mm LONG 16M DEFORMED BARS). THE NUMBER REQUIRED WILL BE ONE MORE THAN THE NUMBER OF CONDUIT IN THE BOTTOM LAYER.
  - TWO STRAIGHT BARS TYPE C (3000mm LONG 15M DEFORMED BARS).
- CONCRETE TO BE MIN. COMP. STRENGTH AT 28 DAYS = 20 MPa, AGGREGATE 20mm, TYPE 50 CEMENT WITH 5-8% AIR ENTRAINMENT. CONDUIT #1 IS FOR TRAFFIC SIGNALS #2-11 FOR MB HYDRO



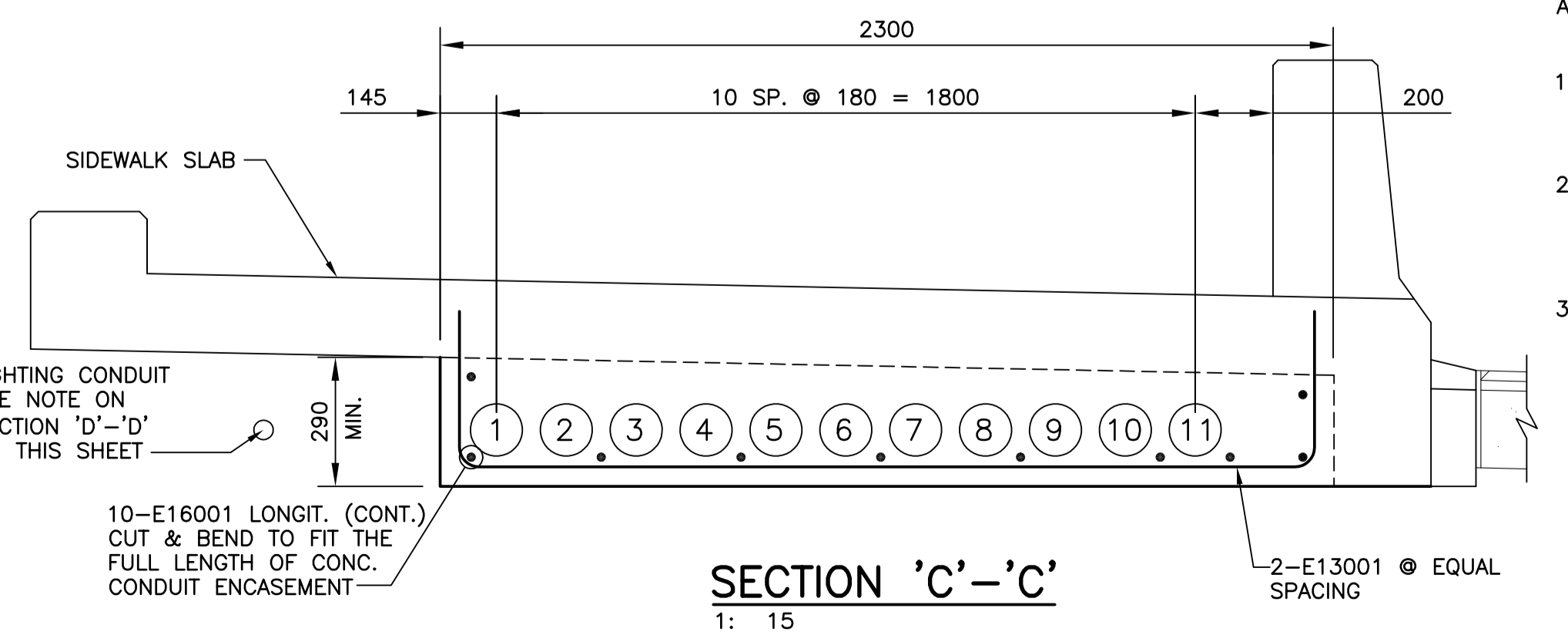
**SECTION 'E'-'E'**  
1: 15



**SECTION 'F'-'F'**  
1: 15



**TYPICAL CONNECTION DETAIL TO EXISTING MANHOLE**  
1: 20



**SECTION 'C'-'C'**  
1: 15

B.M. ELEV.	DESIGNED BY R.A.W.			
	DRAWN BY N.B.G. / K.C.			
	CHECKED BY R.A.W.			
	APPROVED BY			
2 ISSUED FOR TENDER 01/31/05 NBG	HOR. SCALE AS NOTED	RELEASED FOR CONSTRUCTION	CONSULTANT PROJECT NO. 04-3021-2000	<b>MARYLAND TWIN BRIDGES REHABILITATION PROJECT</b> WEST BRIDGE REHABILITATION UTILITY CONDUITS
1 ISSUED FOR CITY REVIEW 12/17/04 RAW	VERTICAL	DATE DEC. 2004		