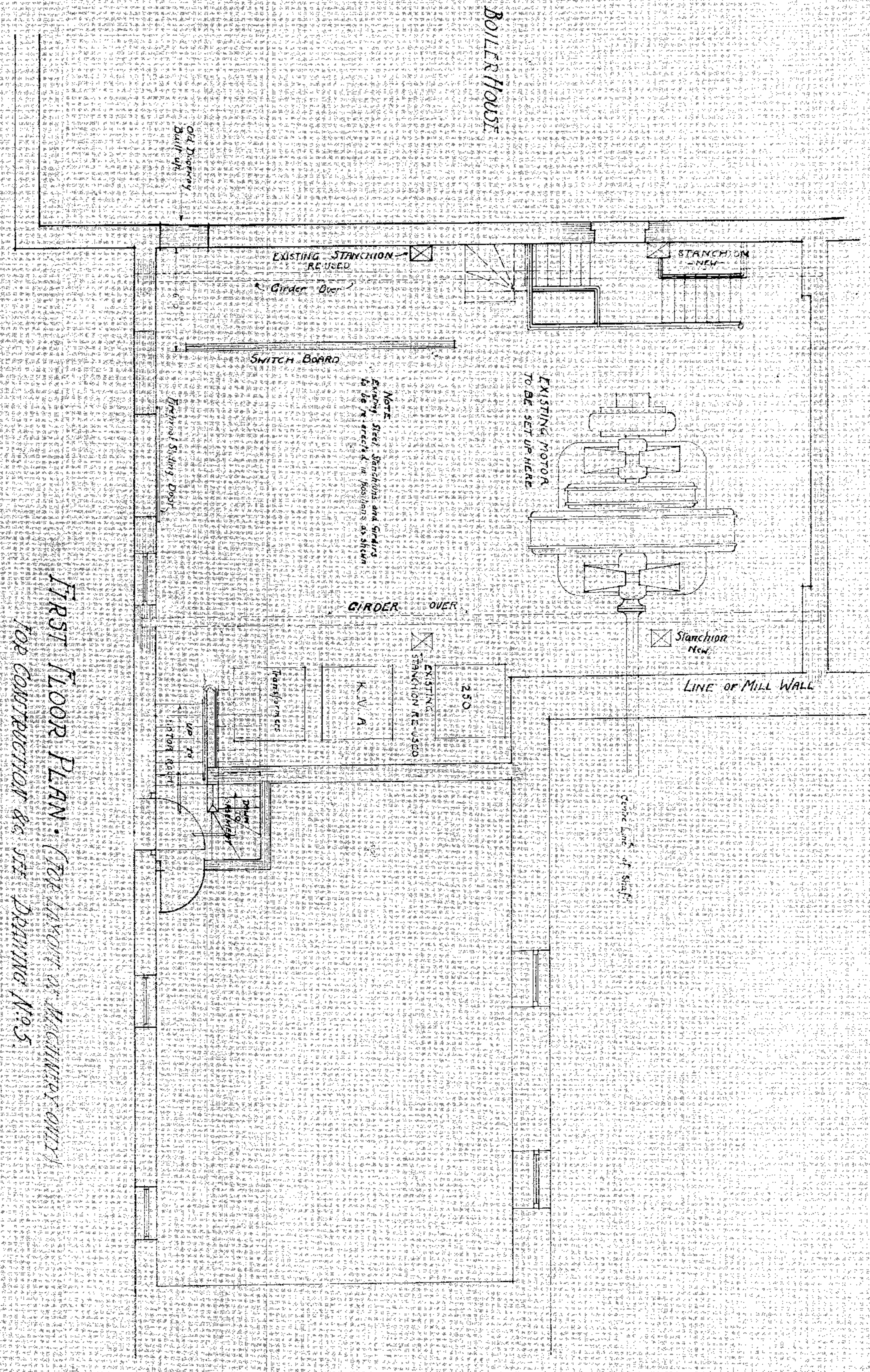


No. 3  
 SCALE 3/4 INCH TO ONE FOOT

Ogilvie Flour Mills Company Limited, Winnipeg, Manitoba  
 NEW MOTOR ROOM

JUNE, 1918

DEVELOPED BY J. W. DRAVING



FIRST FLOOR PLAN - (TOP LAYOUT OF MILLWORK ONLY)  
 TOP CONSTRUCTION AS SET DRAWING No. 5