

ROOM FINISH SCHEDULE									
ROOM NO.	ROOM NAME	FLOOR	BASEBOARD	NORTH WALL	SOUTH WALL	EAST WALL	WEST WALL	CEILING	CEILING HEIGHT
201	RECEPTION	CARPET #1	CARPET #1 BASE	PT.	PT.	PT.	PT.	EXISTING	7'-4" & 8'-4"
202	MEETING ROOM			PT.	PT.	PT.	PT.		8'-4"
203	COPY ROOM			PT.	PT.	PT.	PT.		
204	DEPUTY CHIEF OPERATIONS			PT.	PT.	PT.	PT.		
205	PUBLIC INFORMATION OFFICER			PT.	PT.	PT.	PT.		
206	EXECUTIVE ASSISTANT			PT.	PT.	PT.	PT.		
207	CHIEF			PT.	PT.	PT.	PT.		
208	GENERAL OFFICE			PT.	PT.	PT.	PT.		
209	WASHROOM	TILE #1	RB. BB. #1	PT.	PT.	PT.	PT.		
210	DEPUTY CHIEF SUPPORT SERVICES	CARPET #1	CARPET #1 BASE	PT.	PT.	PT.	PT.		
211	ASSISTANT CHIEF			PT.	PT.	PT.	PT.		
212	ASSISTANT CHIEF			PT.	PT.	PT.	PT.		
213	RESOURCE MANAGER			PT.	PT.	PT.	N/A		
214	MEETING ROOM			N/A	PT.	PT.	PT.		
215	MANAGER OF HUMAN RESOURCES			PT.	PT.	PT.	PT.		
216	HR SUPERVISOR			PT.	PT.	PT.	N/A		
217	GENERAL OFFICE			PT.	PT.	PT.	PT.		
218	TRANSITION MANAGER			PT.	PT.	PT.	PT.		
219	FILE ROOM			PT.	PT.	PT.	PT.		
220	CORRIDOR	TILE #1	RB. BB. #1	PT.	PT.	PT.	PT.		
221	STORAGE ROOM	EXISTING							
222	LUNCH ROOM	EXISTING	EXISTING	PT.	PT.	PT.	PT.		
223	TELEPHONE/ELECTRICAL/JANITOR	EXISTING							
224	IT GENERAL OFFICE	CARPET #1	CARPET #1 BASE	PT.	PT.	PT.	PT.		
225	IT STORAGE	CARPET #1	CARPET #1 BASE	PT.	PT.	PT.	PT.		
226	IT LAB	RB. FL. #1	RB. BB. #1	PT.	PT.	PT.	PT.		
227	MANAGER OF IT	CARPET #1	CARPET #1 BASE	PT.	PT.	PT.	N/A		
228	INFO SYSTEMS SPECIALIST			PT.	PT.	PT.	PT.		
229	END USER SPECIALIST								
230	CORRIDOR	TILE #1	RB. BB. #1	PT.	PT.	PT.	PT.		
231	MEETING ROOM	CARPET #1	CARPET #1 BASE	PT.	PT.	PT.	PT.		
232	COPY ROOM	RB. FL. #1	RB. BB. #1	PT.	PT.	PT.	PT.		
233	FILE ROOM	CARPET #1	CARPET #1 BASE	PT.	PT.	PT.	PT.		
234	LAN ROOM			PT.	PT.	PT.	PT.		
235	FINANCE SUPERVISOR			PT.	PT.	PT.	PT.		
236	GENERAL OFFICE			PT.	PT.	PT.	PT.		
237	CUSTOMER SERVICES			PT.	PT.	PT.	PT.		
238	ACCOUNTING TECHNICIAN			PT.	PT.	PT.	N/A		
239	FINANCE MANAGER			PT.	PT.	PT.	PT.		
240	SAFETY MANAGER			PT.	PT.	PT.	N/A		
241	2 MEDICAL DIRECTORS			PT.	PT.	PT.	PT.		
242	Q1 MANAGER			PT.	N/A	PT.	PT.		
243	DATA ANALYST			PT.	N/A	PT.	PT.		
244	BOARDROOM			PT.	PT.	PT.	PT.		
245	CORRIDOR			PT.	PT.	PT.	N/A		
246	LIBRARY			PT.	PT.	PT.	PT.		

ABBREVIATIONS PT. -PAINT RB. FL. -RUBBER FLOOR RB. BB. -RUBBER BASEBOARD N/A -NOT APPLICABLE (FULL HEIGHT & WIDTH SIDELITE & DOOR)

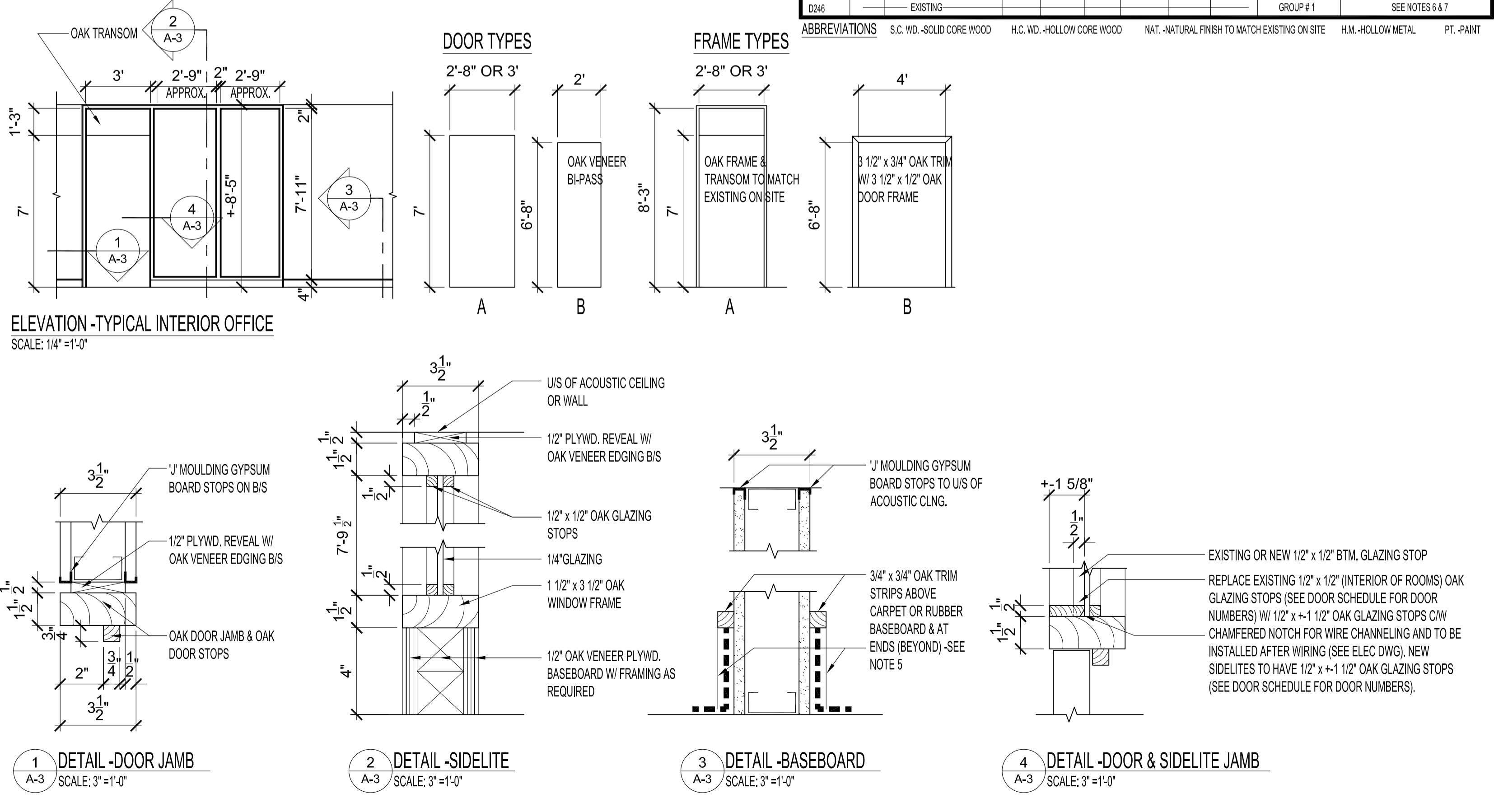
DOOR SCHEDULE												
DOOR No.	DOOR					FRAME			RATING	HARDWARE CODE	GROUP #	NOTES
	TYPE	WIDTH	HEIGHT	THICK.	MAT'L.	FINISH	TYPE	MAT'L.				
D201	---	---	---	---	---	---	---	---	---	---	---	SEE NOTES 6 & 7
D202	---	---	---	---	---	---	---	---	---	---	---	SEE NOTE 6
D203-A	A	3'-0" x 7'-0" x 1 3/4"	---	---	S.C.WD.	NAT.	A	WD.	NAT.	---	GROUP # 4	---
D203-B	A	3'-0" x 7'-0" x 1 3/4"	---	---	S.C.WD.	NAT.	A	WD.	NAT.	---	GROUP # 4	---
D204-A	---	---	---	---	---	---	---	---	---	---	---	SEE NOTES 6 & 7
D204-B	B	2'-0" x 6'-0" x 1 3/8"	---	---	H.C.WD.	NAT.	B	WD.	NAT.	---	GROUP # 7	---
D205	---	---	---	---	---	---	---	---	---	---	---	SEE NOTES 6 & 7
D206	---	---	---	---	---	---	---	---	---	---	---	SEE NOTES 6 & 7
D207	---	---	---	---	---	---	---	---	---	---	---	SEE NOTES 6 & 7
D208	---	---	---	---	---	---	---	---	---	---	---	SEE NOTES 6 & 7
D209	A	2'-8" x 7'-0" x 1 3/4"	---	---	S.C.WD.	NAT.	A	WD.	NAT.	---	GROUP # 3	FRAME & DOOR OPENING MUST CLEAR SHELF ON DWG #1 ELEV. A
D210	---	---	---	---	---	---	---	---	---	---	---	SEE DETAIL 4 & NOTES 6 & 7
D211	---	---	---	---	---	---	---	---	---	---	---	SEE DETAIL 4 & NOTES 6 & 7
D212	---	---	---	---	---	---	---	---	---	---	---	SEE DETAIL 4 & NOTES 6 & 7
D213	---	---	---	---	---	---	---	---	---	---	---	SEE DETAIL 4 & NOTES 6 & 7
D214	---	---	---	---	---	---	---	---	---	---	---	SEE DETAIL 4 & NOTES 6 & 7
D215	---	---	---	---	---	---	---	---	---	---	---	SEE NOTES 6 & 7
D216	A	3'-0" x 7'-0" x 1 3/4"	---	---	S.C.WD.	NAT.	A	WD.	NAT.	---	GROUP # 5	SEE DETAIL 4 & NOTES 6 & 7
D218	A	3'-0" x 7'-0" x 1 3/4"	---	---	S.C.WD.	NAT.	A	WD.	NAT.	---	GROUP # 5	SEE DETAIL 4 & NOTES 6 & 7
D219	---	---	---	---	---	---	---	---	---	---	---	SEE NOTES 6 & 7
D221	---	---	---	---	---	---	---	---	---	---	---	SEE NOTES 6 & 7
D222	---	---	---	---	---	---	---	---	---	---	---	SEE NOTE 6
D223-A	---	---	---	---	---	---	---	---	---	---	---	SEE NOTES 6 & 7
D223-B	---	---	---	---	---	---	---	---	---	---	---	---
D224	A	3'-0" x 7'-0" x 1 3/4"	---	---	S.C.WD.	NAT.	A	WD.	NAT.	---	GROUP # 5	SEE NOTES 6 & 7
D225	---	---	---	---	---	---	---	---	---	---	---	SEE NOTES 6 & 7
D226	---	---	---	---	---	---	---	---	---	---	---	SEE NOTE 6
D227	A	3'-0" x 7'-0" x 1 3/4"	---	---	S.C.WD.	NAT.	A	WD.	NAT.	---	GROUP # 5	SEE DETAIL 4 & NOTES 6 & 7
D228	---	---	---	---	---	---	---	---	---	---	---	SEE DETAIL 4 & NOTES 6, 7 & 9
D230-A	---	---	---	---	---	---	---	---	---	---	---	SEE NOTES 6 & 7
D230-B	---	---	---	---	---	---	---	---	---	---	---	---
D231	---	---	---	---	---	---	---	---	---	---	---	SEE NOTE 6
D232-A	---	---	---	---	---	---	---	---	---	---	---	---
D232-B	---	---	---	---	---	---	---	---	---	---	---	DOOR TO BE SEALED OFF
D233-A	---	---	---	---	---	---	---	---	---	---	---	SEE NOTES 6, 7 & 9
D233-B	---	---	---	---	---	---	---	---	---	---	---	---
D234	---	---	---	---	---	---	---	---	---	---	---	SEE NOTES 6 & 7
D235	---	---	---	---	---	---	---	---	---	---	---	SEE DETAIL 4 & NOTES 6 & 7
D237	---	---	---	---	---	---	---	---	---	---	---	SEE DETAIL 4 & NOTES 6 & 7
D238	---	---	---	---	---	---	---	---	---	---	---	SEE DETAIL 4 & NOTES 6, 7 & 9
D239	---	---	---	---	---	---	---	---	---	---	---	SEE DETAIL 4 & NOTES 6, 7 & 9
D240	A	3'-0" x 7'-0" x 1 3/4"	---	---	S.C.WD.	NAT.	A	WD.	NAT.	---	GROUP # 5	SEE DETAIL 4 & NOTES 6 & 7
D241	---	---	---	---	---	---	---	---	---	---	---	SEE NOTES 6 & 7
D242	---	---	---	---	---	---	---	---	---	---	---	SEE DETAIL 4 & NOTES 6 & 7
D243	---	---	---	---	---	---	---	---	---	---	---	SEE DETAIL 4 & NOTES 6 & 7
D244	---	---	---	---	---	---	---	---	---	---	---	GROUP # 4
D245	---	---	---	---	---	---	---	---	---	---	---	---
D246	---	---	---	---	---	---	---	---	---	---	---	SEE NOTES 6 & 7

ABBREVIATIONS S.C. WD. -SOLID CORE WOOD H.C. WD. -HOLLOW CORE WOOD NAT. -NATURAL FINISH TO MATCH EXISTING ON SITE H.M. -HOLLOW METAL PT. -PAINT

HARDWARE CODES	
GROUP #1	REPLACE EXISTING HARDWARE WITH ELECTRIC STRIKE HES 5000-504 630 & CARD ACCESS SYSTEM BY JOHNSON CONTROLS NOTE: INSTALLATION OF ELECTRIC STRIKE & CARD ACCESS SYSTEM BY JOHNSON CONTROLS
GROUP #2	REPLACE EXISTING HARDWARE WITH ELECTRIC STRIKE HES 9600-630 SERIES & CARD ACCESS SYSTEM BY JOHNSON CONTROLS NOTE: INSTALLATION OF ELECTRIC STRIKE & CARD ACCESS SYSTEM BY JOHNSON CONTROLS
GROUP #3	SCHLAGE HINGES TO MATCH EXISTING ON SITE SCHLAGE PRIVACY KNOB & TRIM TO MATCH EXISTING ON SITE FLOOR MOUNTED DOOR STOP- FINISH TO MATCH EXISTING ON SITE
GROUP #4	SCHLAGE HINGES TO MATCH EXISTING ON SITE SCHLAGE PASSAGE KNOB & TRIM TO MATCH EXISTING ON SITE FLOOR MOUNTED DOOR STOP- FINISH TO MATCH EXISTING ON SITE
GROUP #5	SCHLAGE HINGES TO MATCH EXISTING ON SITE FLOOR MOUNTED DOOR STOP- FINISH TO MATCH EXISTING ON SITE ELECTRIC STRIKE HES 5000-504 630 & CARD ACCESS SYSTEM BY JOHNSON CONTROLS NOTE: INSTALLATION OF ELECTRIC STRIKE & CARD ACCESS SYSTEM BY JOHNSON CONTROLS
GROUP #6	SCHLAGE PASSAGE KNOB & TRIM TO MATCH EXISTING ON SITE
GROUP #7	USE STANDARD BI-PASS DOOR HARDWARE

- NOTES :
- ALL NEW DOORS, TRANSOMS, FRAMES, TRIM, SIDELITES, BASEBOARD TRIM TO BE SOLID OAK W/ A NATURAL FINISH & TO MATCH EXISTING ON SITE UNLESS OTHERWISE NOTED.
  - ALL NEW DOORS (EXCLUDING DOOR D204-B) TO BE SOLID CORE WOOD.
  - NEW SIDELITE WIDTHS MAY VARY DEPENDING ON WALL LENGTH, SIDELITES TO EXTEND FROM WALL TO DOOR AS EXISTING ON SITE.
  - ALL RENOVATED & NEW WALLS TO BE PATCHED & PAINTED ACCORDING TO ROOM SCHEDULE.
  - ALL EXISTING OAK BASEBOARD TRIM TO BE REPLACED OR REPAIRED AS REQUIRED.
  - ALL EXISTING & NEW DOORS (WOOD OR METAL) TO BE MODIFIED FOR INSTALLATION OF ELECTRIC STRIKE PLATES.
  - ALL EXISTING & NEW DOORS W/ ELECTRIC STRIKES TO HAVE CORE CYLINDERS REPLACED W/ NEW CORES THAT ARE KEYPED ALIKE.
  - REPLACE EXISTING LOCKSETS W/ EXISTING SALVAGED PASSAGE SETS.
  - REPLACE EXISTING PASSAGE SETS W/ NEW LOCKSETS (4 TOTAL & AS PER NOTE 7).
  - PROVIDE 3 NEW LOCKSETS FOR EXISTING OR NEW DOORS & AS PER NOTE 7.

ORIGINAL SEALED BY:  
R.K. FOK LI Arch.  
Date: 2004/10/13



NO.	REVISION/DESCRIPTION	BY	DATE
SEALS			

DRAWN BY	MMK	CHECKED BY	APPROVED
DATE	2004.08.23	USER APPROVAL	

CITY OF WINNIPEG  
PLANNING, PROPERTY & DEVELOPMENT DEPARTMENT  
CIVIC ACCOMMODATIONS DIVISION  
300 - 65 GARRY ST. R3C 4K4

PROJECT  
Fire Paramedic Services  
Executive Office Renovation

185 KING STREET - MANDARIN BLDG. - SECOND FLOOR

SHEET TITLE  
Schedules & Details

SCALE	PROJECT NO.	SHEET NO.
Noted	2004-060	A-3

DRAWING SHEET SIZE: A1 (594mm x 841mm) PLOT 1:1