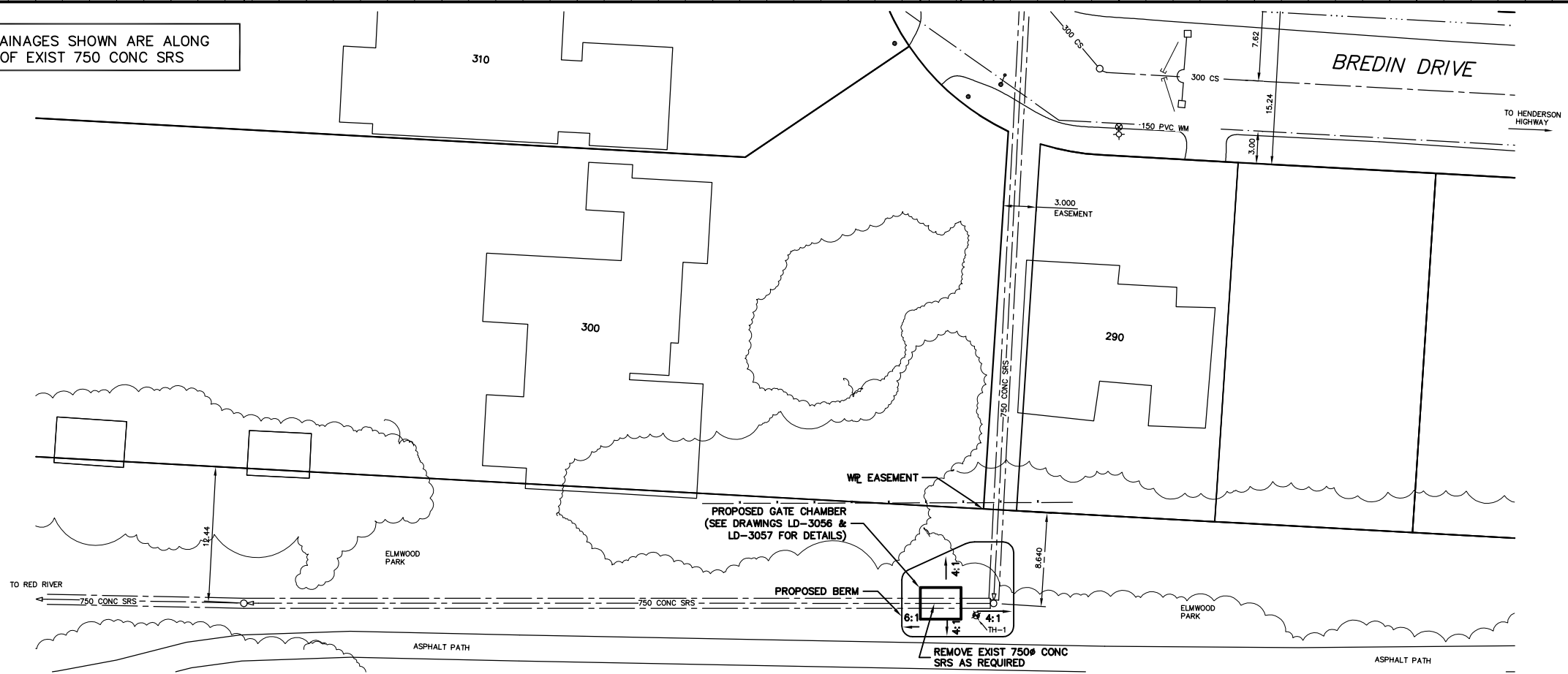


NOTE: CHAINAGES SHOWN ARE ALONG
 CL OF EXIST 750 CONC SRS



- CONSTRUCTION NOTES:**
- RESTORE ALL DISTURBED GRASS AREAS & BERM WITH IMPORTED TOP SOIL & SOD IN ACCORDANCE WITH CW 3510.
 - DO NOT REMOVE EXISTING TREES. PROVIDE TREE PROTECTION IN ACCORDANCE WITH SPECIFICATIONS.
 - LEAVE SLUICE GATE IN OPEN POSITION AT ALL TIMES EXCEPT WHEN ON-SITE WORKING ON GATE.
 - PROVIDE TEMPORARY PUMPING OF FLOW IN STORM RELIEF SEWER AS REQUIRED DURING CONSTRUCTION.
 - PREVENT EXCAVATED MATERIAL, BACKFILL MATERIAL AND SOIL/WATER SLURRY FROM ENTERING SRS OUTFALL TO THE RIVER.
 - ACCESS SITE FROM GLENWOOD CRESCENT GATE.

METRIC
 WHOLE NUMBERS INDICATE MILLIMETRES
 DECIMALIZED NUMBERS INDICATE METRES

WARNING
 IF POWER EQUIPMENT OR EXPLOSIVES ARE TO BE USED FOR EXCAVATION ON THIS PROJECT THE CONTRACTOR MUST:
 1) NOTIFY THE GAS COMPANY OF THE PROPOSED LOCATION OF EXCAVATION.
 2) TAKE PRECAUTION TO AVOID DAMAGE TO GAS COMPANY INSTALLATIONS.
 SEE PROVINCIAL REGULATION 210/72 FOR DETAILS
 DECIMALIZED NUMBERS INDICATE METRES

200 WM	WATERMAIN	200 WM	SL, HYDRO	150 WM	WATERMAIN	150 WM
HYDRANT	HYDRANT	MTS	TRAFFIC SIGNALS	HYDRANT	VALVE	
VALVE	525 LDS	50 GAS	GAS	50 GAS	300 LDS	LAND DRAINAGE SEWER
LAND DRAINAGE SEWER	375 WWS	WASTEWATER SEWER	375 WWS	WASTEWATER SEWER	250 WWS	WASTEWATER SEWER
MANHOLE	CATCH BASIN	CURB INLET	JUNCTIONS	CULVERT	ANODE	EXISTING
LEGEND-PLAN	PROPOSED	EXISTING	LEGEND-PLAN	PROPOSED	EXISTING	LEGEND-PROFILE
PROPOSED	EXISTING	PROPOSED	EXISTING	PROPOSED	EXISTING	PROPOSED

LOCATION APPROVED
 UNDERGROUND STRUCTURES

SUPV. U/G STRUCTURES COMMITTEE DATE

NOTE:
 LOCATION OF UNDERGROUND STRUCTURES AS SHOWN ARE BASED ON THE BEST INFORMATION AVAILABLE BUT NO GUARANTEE IS GIVEN THAT ALL EXISTING UTILITIES ARE SHOWN OR THAT THE GIVEN LOCATIONS ARE EXACT. CONFIRMATION OF EXISTENCE AND EXACT LOCATION OF ALL SERVICES MUST BE OBTAINED FROM THE INDIVIDUAL UTILITIES BEFORE PROCEEDING WITH CONSTRUCTION.

B.M. ELEV.	FIELD BOOK #:
POSTED TO LBS	
NO.	REVISIONS
DATE	BY

CITY OF WINNIPEG
WATER AND WASTE
ENGINEERING DIVISION

DESIGNED BY: DGS
 CHECKED BY: TW
 DRAWN BY: CJH
 APPROVED BY: KZ

HOR. SCALE: 1:250
 VERTICAL: 1:50
 DATE: 2004.09.01

ENGINEER'S SEAL
 ORIGINAL SIGNED BY K.R. ZUREK
 04/09/03

BID OPPORTUNITY: 417-2004
 FILENAME: LD-3055.DWG
 PLOT DATE: 2004 09 03

THE CITY OF WINNIPEG
 WATER AND WASTE DEPARTMENT

2004 OUTFALL GATE CHAMBER UPGRADES

BREDIN DRIVE
 SRS OUTFALL GATE CHAMBER
 SITE PLAN

SHEET 10 OF 14
 CITY DRAWING NUMBER
 LD-3055