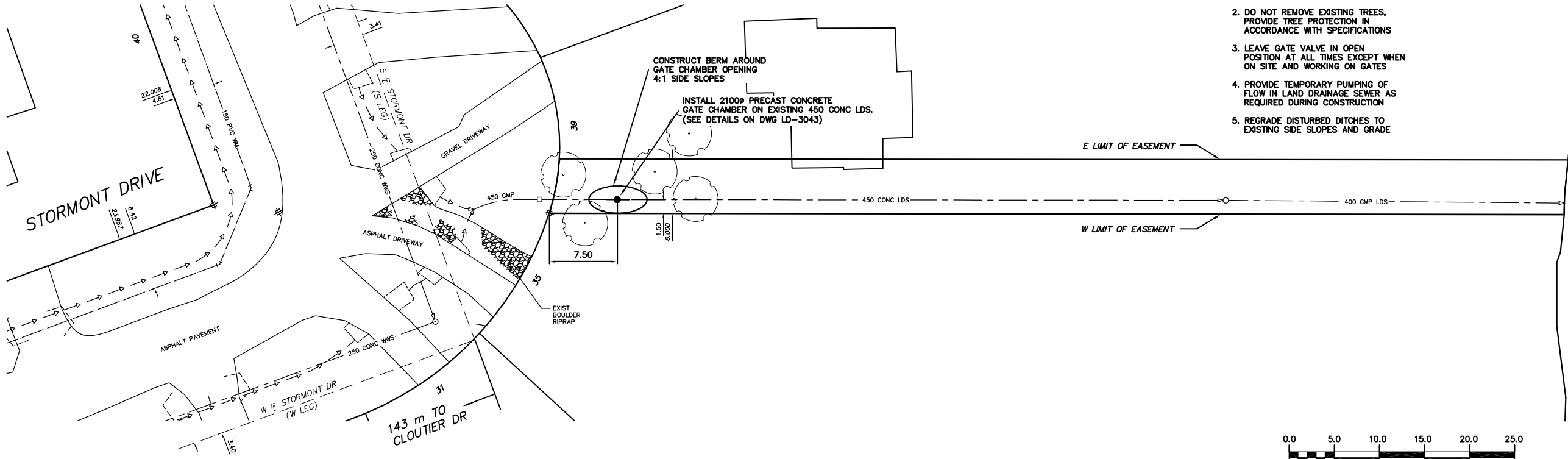


NOTE: CHAINAGES SHOWN ARE ALONG
 ⌀ OF 450 CONC LDS

CONSTRUCTION NOTES

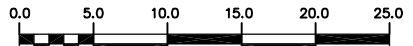
1. RESTORE ALL DISTURBED GRASS AREAS AND BERM WITH IMPORTED TOPSOIL AND SOD IN ACCORDANCE WITH CW 3510
2. DO NOT REMOVE EXISTING TREES, PROVIDE TREE PROTECTION IN ACCORDANCE WITH SPECIFICATIONS
3. LEAVE GATE VALVE IN OPEN POSITION AT ALL TIMES EXCEPT WHEN ON SITE AND WORKING ON GATES
4. PROVIDE TEMPORARY PUMPING OF FLOW IN LAND DRAINAGE SEWER AS REQUIRED DURING CONSTRUCTION
5. REGRADE DISTURBED DITCHES TO EXISTING SIDE SLOPES AND GRADE



METRIC
 WHOLE NUMBERS INDICATE MILLIMETRES
 DECIMALIZED NUMBERS INDICATE METRES

WARNING

IF POWER EQUIPMENT OR EXPLOSIVES ARE TO BE USED FOR EXCAVATION ON THIS PROJECT THE CONTRACTOR MUST:
 1) NOTIFY THE GAS COMPANY OF THE PROPOSED LOCATION OF EXCAVATION.
 2) TAKE PRECAUTION TO AVOID DAMAGE TO GAS COMPANY INSTALLATIONS.
 SEE PROVINCIAL REGULATION 210/72 FOR DETAILS



200 WM	WATERMAIN	200 WM	SL, HYDRO	150 WM	WATERMAIN	150 WM
HYDRANT	HYDRANT	MTS	TRAFFIC SIGNALS	HYDRANT	HYDRANT	VALVE
VALVE	VALVE	GAS	GAS	VALVE	VALVE	LAND DRAINAGE SEWER
525 LDS	LAND DRAINAGE SEWER	525 LDS	50 GAS	300 LDS	LAND DRAINAGE SEWER	300 LDS
375 WWS	WASTEWATER SEWER	375 WWS	250 WWS	250 WWS	WASTEWATER SEWER	250 WWS
MANHOLE	MANHOLE	FENCE	FENCE	⌀ PROFILE	⌀ PROFILE	GROUND ABOVE PIPE
CATCH BASIN	CATCH BASIN	POLE - HYDRO, MTS	POLE - HYDRO, MTS	⌀ DITCH (SOUTH & EAST)	⌀ DITCH (SOUTH & EAST)	GUTTER (NORTH & WEST)
CURB INLET	CURB INLET	CURB STOP	CURB STOP	GUY ANCHOR	GUY ANCHOR	LIGHT STANDARD
JUNCTIONS	JUNCTIONS	TREE	TREE			
CULVERT	CULVERT					
ANODE	ANODE					
EXISTING	LEGEND-PLAN	PROPOSED	EXISTING	LEGEND-PLAN	PROPOSED	EXISTING
LEGEND-PLAN	PROPOSED	EXISTING	LEGEND-PLAN	PROPOSED	EXISTING	LEGEND-PROFILE
PROPOSED	EXISTING	LEGEND-PLAN	PROPOSED	EXISTING	LEGEND-PROFILE	PROPOSED

LOCATION APPROVED
 UNDERGROUND STRUCTURES

SUPV. U/G STRUCTURES COMMITTEE DATE

NOTE:
 LOCATION OF UNDERGROUND STRUCTURES AS SHOWN ARE BASED ON THE BEST INFORMATION AVAILABLE BUT NO GUARANTEE IS GIVEN THAT ALL EXISTING UTILITIES ARE SHOWN OR THAT THE GIVEN LOCATIONS ARE EXACT. CONFIRMATION OF EXISTENCE AND EXACT LOCATION OF ALL SERVICES MUST BE OBTAINED FROM THE INDIVIDUAL UTILITIES BEFORE PROCEEDING WITH CONSTRUCTION.

B.M. ELEV.	FIELD BOOK #
POSTED TO LBS	
NO.	REVISIONS
DATE	BY

CITY OF WINNIPEG
WATER AND WASTE ENGINEERING DIVISION

DESIGNED BY: DGS
 CHECKED BY: TW
 DRAWN BY: MJK/CJH
 APPROVED BY: KZ
 HOR. SCALE: 1:200
 VERTICAL: 1:50
 DATE: 2004 09 01

ENGINEER'S SEAL
 ORIGINAL SIGNED BY K.R. ZUREK
 04/09/03

RELEASED FOR CONSTRUCTION
 DATE

BID OPPORTUNITY: 416-2004
 FILENAME: LD-3034.DWG
 PLOT DATE: 2004 09 03

THE CITY OF WINNIPEG
 WATER AND WASTE DEPARTMENT

2004 OUTFALL GATE CHAMBER UPGRADES

STORMONT DRIVE
 LDS OUTFALL GATE CHAMBER
 SITE PLAN

SHEET 9 OF 12
 CITY DRAWING NUMBER
 LD-3042