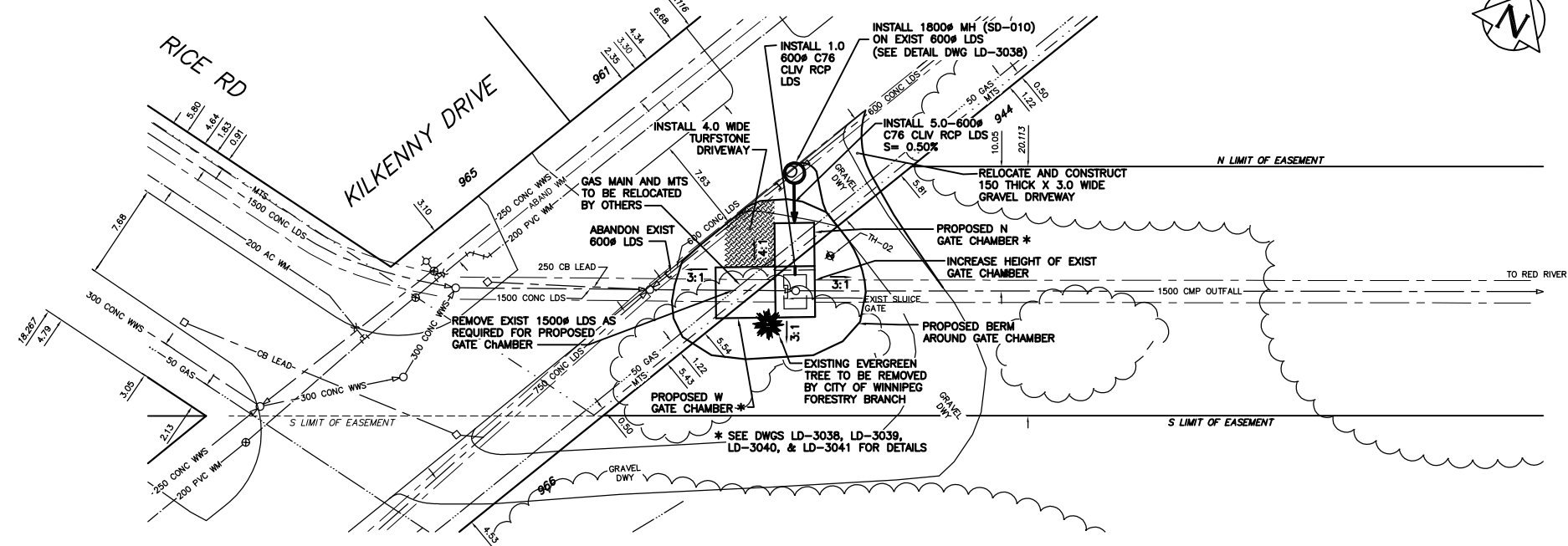


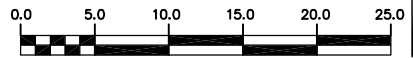
NOTE: CHAINAGES SHOWN ARE ALONG S. R. OF EASEMENT



- CONSTRUCTION NOTES**
- RESTORE ALL DISTURBED GRASS AREAS AND BERM WITH IMPORTED TOPSOIL AND SOD IN ACCORDANCE WITH CW 3510
 - DO NOT REMOVE EXISTING TREES, PROVIDE TREE PROTECTION IN ACCORDANCE WITH SPECIFICATIONS
 - LEAVE SLUICE GATES IN OPEN POSITION AT ALL TIMES EXCEPT WHEN ON SITE WORKING ON GATES
 - PROVIDE TEMPORARY PUMPING OF FLOW IN LAND DRAINAGE SEWERS AS REQUIRED DURING CONSTRUCTION
 - INSTALL 600# LDS USING TRENCHLESS METHODS IN ACCORDANCE WITH CW 2130

METRIC
WHOLE NUMBERS INDICATE MILLIMETRES
DECIMALIZED NUMBERS INDICATE METRES

WARNING
IF POWER EQUIPMENT OR EXPLOSIVES ARE TO BE USED FOR EXCAVATION ON THIS PROJECT THE CONTRACTOR
1) NOTIFY THE GAS COMPANY OF THE PROPOSED LOCATION OF EXCAVATION.
2) TAKE PRECAUTION TO AVOID DAMAGE TO GAS COMPANY INSTALLATIONS.
SEE PROVINCIAL REGULATION 210/72 FOR DETAILS



200 WM	WATERMAIN	200 WM	SL, HYDRO	150 WM	WATERMAIN	150 WM
+	HYDRANT	+	MTS	+	HYDRANT	+
⊕	VALVE	⊕	TRAFFIC SIGNALS	⊕	VALVE	⊕
525 LDS	LAND DRAINAGE SEWER	525 LDS	GAS	50 GAS	300 LDS	LAND DRAINAGE SEWER
375 WWS	WASTEWATER SEWER	375 WWS	SURVEY BAR	250 WWS	250 WWS	WASTEWATER SEWER
○	MANHOLE	●	FENCE	⊗	⊗	PROFILE
□	CATCH BASIN	■	POLE - HYDRO, MTS	⊖	⊖	GROUND ABOVE PIPE
▽	CURB INLET	▽	CURB STOP	⊖	⊖	⊖
⊕	JUNCTIONS	⊕	GUY ANCHOR	⊖	⊖	⊖
⊖	CULVERT	⊖	LIGHT STANDARD	⊖	⊖	⊖
⊖	ANODE	⊖	TREE	⊖	⊖	⊖
EXISTING	LEGEND-PLAN	PROPOSED	EXISTING	LEGEND-PLAN	PROPOSED	EXISTING
---	LEGEND-PROFILE	---	---	---	---	---

LOCATION APPROVED UNDERGROUND STRUCTURES

SUPV. U/G STRUCTURES COMMITTEE	DATE

NOTE:
LOCATION OF UNDERGROUND STRUCTURES AS SHOWN ARE BASED ON THE BEST INFORMATION AVAILABLE BUT NO GUARANTEE IS GIVEN THAT ALL EXISTING UTILITIES ARE SHOWN OR THAT THE GIVEN LOCATIONS ARE EXACT. CONFIRMATION OF EXISTENCE AND EXACT LOCATION OF ALL SERVICES MUST BE OBTAINED FROM THE INDIVIDUAL UTILITIES BEFORE PROCEEDING WITH CONSTRUCTION.

CITY OF WINNIPEG WATER AND WASTE ENGINEERING DIVISION

DESIGNED BY: DGS
CHECKED BY: TW
DRAWN BY: WKT/CJH
APPROVED BY: KZ

HOR. SCALE: 1:250
VERTICAL: 1:50
DATE: 2004.09.01

ENGINEER'S SEAL
ORIGINAL SIGNED BY K.R. ZUREK
04/09/03

THE CITY OF WINNIPEG WATER AND WASTE DEPARTMENT

2004 OUTFALL GATE CHAMBER UPGRADES
RICE ROAD LDS OUTFALL GATE CHAMBER EXPANSION SITE PLAN

SHEET 4 OF 12
CITY DRAWING NUMBER
LD-3037

BID OPPORTUNITY: 416-2004
FILENAME: LD-3037.DWG
PLOT DATE: 2004.09.03