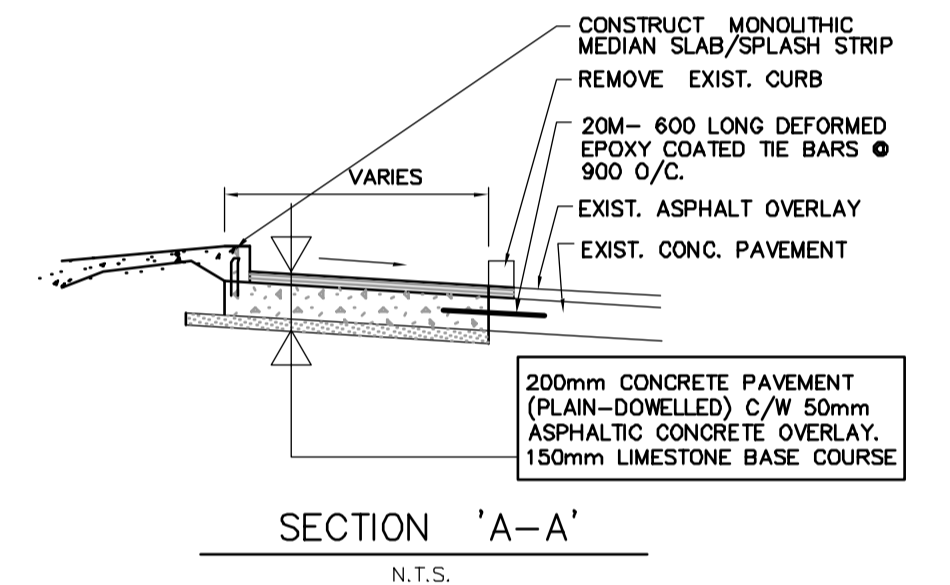
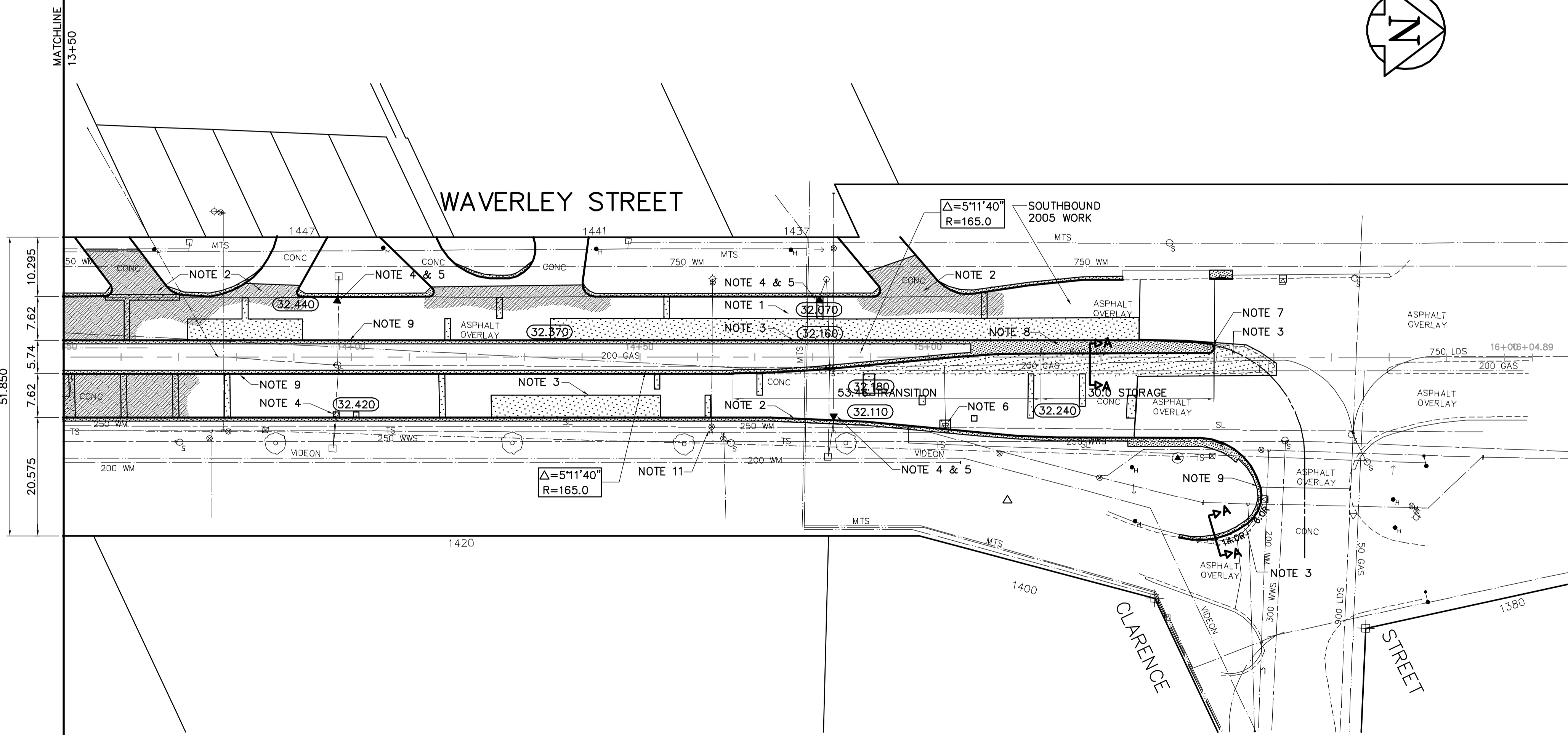


KEY PLAN



- REFERENCE NOTES**
- BASELINE IS CENTRED BETWEEN NORTHBOUND AND SOUTHBOUND GUTTER BACK OF CURB LINE.
 - LEGAL PLAN - L.B.I.S.
 - ADD 200.000 TO OBTAIN GEODETIC DATUM.
 - PAVEMENT DIMENSIONS ARE TO BACK OF CURB.
 - EARTH TECH FIELD BOOK NO. 4380.

- CONSTRUCTION NOTES**
- PLANE AND CONSTRUCT NEW ASPHALTIC CONCRETE OVERLAY.
 - CONSTRUCT NEW ASPHALTIC CONCRETE OVERLAY.
 - CONSTRUCT NEW 200mm PLAIN DOWELLED CONCRETE PAVEMENT c/w ASPHALTIC CONCRETE OVERLAY.
 - ABANDON EXISTING DRAINAGE INLET.
 - INSTALL NEW CURB & GUTTER INLET c/w CATCHPIT (SD223) AND CONNECT NEW 250 LEAD TO EXIST. CATCHBASIN.
 - ADJUST EXISTING CURB & GUTTER INLET FRAME AND COVER.
 - CONSTRUCT NEW MONOLITHIC CONCRETE BULLNOSE.
 - CONSTRUCT NEW MONOLITHIC CONCRETE MEDIAN SLAB.
 - CONSTRUCT NEW MONOLITHIC CONCRETE SPLASH STRIP.
 - CONSTRUCT NEW CONCRETE MEDIAN SLAB.
 - ADJUST EXISTING WATERMAIN VALVE BOX TO GRADE.
 - ADJUST EXISTING CATCHBASIN/MANHOLE FRAME AND COVER.
 - INSTALL NEW WATERMAIN VALVE BOX EXTENDABLE SECTION INSERT.
 - INSTALL NEW CAST IRON RISER RING.



APEGM
 Certificate of Authorization
 Earth Tech Canada Inc.
 No. 730 Expiry: April 30, 2005

METRIC
 WHOLE NUMBERS INDICATE MILLIMETRES
 DECIMALIZED NUMBERS INDICATE METRES

EXISTING	LEGEND - PLAN	PROPOSED	EXISTING	LEGEND - PLAN	PROPOSED	EXISTING	LEGEND - PROFILE	PROPOSED
150 mm W.M.	WATERMAIN	150 mm W.M.	---	HYDRO	---	x	Q PROFILE	---
300mm L.D.S.	LAND DRAINAGE SEWER	300mm L.D.S.	---	CONCRETE	---	█	WEST MEDIAN GUTTER	---
250mm W.W.S.	WASTEWATER SEWER	250mm W.W.S.	---	PROPERTY LINE	---	□	EAST MEDIAN GUTTER	---
○	MANHOLE	●	---	ASPHALT	---	○	WEST GUTTER	---
□	CATCH BASIN	■	---	SURVEY BAR	---	○	EAST GUTTER	---
▽	CURB INLET	▽	---	ELEVATION	(32.750)			
+	JUNCTIONS	+	---	TREE	---			
---	CULVERT	---	---	SIDEWALK RAMP	---			
---	GAS	---	---	CONCRETE SIDEWALK	---			
			---	FENCE	---			

LOCATION APPROVED UNDERGROUND STRUCTURES

SUPV. U/G STRUCTURES DATE COMMITTEE

NOTE:
 LOCATION OF UNDERGROUND STRUCTURES AS SHOWN ARE BASED ON THE BEST INFORMATION AVAILABLE. BUT NO GUARANTEE IS GIVEN THAT ALL EXISTING UTILITIES ARE SHOWN OR THAT THE GIVEN LOCATIONS ARE EXACT. CONFIRMATION OF EXISTENCE AND EXACT LOCATION OF ALL SERVICES MUST BE OBTAINED FROM THE INDIVIDUAL UTILITIES BEFORE PROCEEDING WITH CONSTRUCTION.

B.M. 65-022	N.E. Cor. Waverley St. & Clarence Ave.
ELEV. 232.751	Tie: in W. conc. med. of No. 1380
	Waverley St., 0.5m S. & 0.07m below
	Lyndal stone of N.W. Cor. of Bldg.

EARTH TECH
 Earth Tech (Canada) Inc. Winnipeg, Manitoba 204.477.5381

DESIGNED BY BK CHECKED BY KWR
 DRAWN BY PAAP,RT,BC APPROVED BY ORIGINAL SIGNED

HOR. SCALE: 1:500
 VERTICAL: 1:20

RELEASED FOR CONSTRUCTION BY:
 ORIGINAL SIGNED AND DATED 29/07/04

1 ISSUED FOR CONSTRUCTION 30/07/04
 0 ISSUED FOR REVIEW 22/07/04

NO. REVISIONS DATE BY

ENGINEER'S SEAL
 PROVINCE OF MANITOBA
 ORIGINAL SIGNED BY
K.W. RAE
 30/07/04
 REGISTERED PROFESSIONAL ENGINEER

CONSULTANT DRAWING NO. CT06

THE CITY OF WINNIPEG
 PUBLIC WORKS DEPARTMENT
 ENGINEERING DIVISION

WAVERLEY STREET
 BISHOP GRANDIN BLVD TO CLARENCE AVENUE
 CONCRETE REPAIRS AND ASPHALT RESURFACING

CITY DRAWING NUMBER PD-3252-06
 SHEET 7 OF 7

PLAN-PROFILE
 STA. 13+50 TO CLARENCE AVENUE