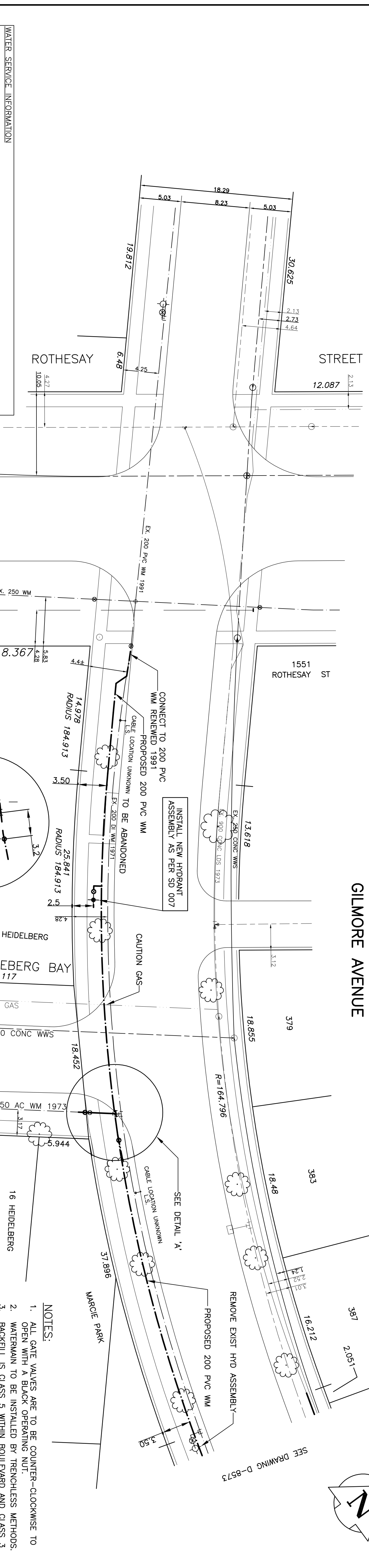


CHAINAGE ALONG SOUTH PROPERTY LINE OF GILMORE



WATER SERVICE INFORMATION

| ADDRESS | SIZE (mm) & TYPE (S/LET) | SIZE (mm) & TYPE (S/PT) | SHORT & LONG MEASUREMENT | COMP. LOCATION | REMARKS |
|-----------------|--------------------------|-------------------------|--------------------------|----------------|---------|
| 179 GILMORE AVE | 19 COPPER | 1.7 WELD | 8.2 FROM HSE. FRONT | | |
| RESIDENTIAL | 19 COPPER | 1.5 FROM HSE. FRONT | | | |
| 183 GILMORE AVE | 19 COPPER | 1.5 FROM HSE. FRONT | | | |
| 187 GILMORE AVE | 19 COPPER | 4.5 FROM ST/L | | | |
| 189 GILMORE AVE | 19 COPPER | 6.7 FROM ST/L | | | |
| 2 HEIDEBERG | 19 COPPER | 7.0 FROM GARAGE FRONT | | | |
| RESIDENTIAL | 19 COPPER | 8.3 FROM GARAGE FRONT | | | |
| 1551 ROTHEsay | 19 COPPER | 4.5 FROM ST/L | | | |
| RESIDENTIAL | 19 COPPER | 8.3 FROM ST/L | | | |

WHOLE NUMBERS INDICATE MILLIMETRES
DECIMALIZED NUMBERS INDICATE METRES

METRIC

LOCATION APPROVED UNDERGROUND STRUCTURES

| NO. | REVISIONS | DATE | BY |
|-----|-----------|------|----|
| 1 | | | |

DESIGNED BY: DPCJ
CHECKED BY: SM
APPROVED BY: IMCK

RELEASED FOR ORIGINAL CONSTRUCTION BY: K. ZUBER, P. ENG.
DATE: JULY 21 2004

ENGINEER: I. G. MCKINNON, P. ENG.
PROFESSIONAL ENGINEER
REG. NO. 069-018-06

2004 CAPITAL WORKS WATERMAIN RENEWALS GILMORE AVENUE
ROTHESAY ST. TO 100 METRES EAST OF ROTHEsay ST.

| EXISTING | LEGEND - PLAN | PROPOSED | EXISTING | LEGEND - PLAN | PROPOSED |
|---------------------|---------------------|---------------------|---------------|---------------|---------------|
| Watermain | Watermain | Watermain | Hydro | Hydro | Hydro |
| Valve | Valve | Valve | M.T.S. | M.T.S. | M.T.S. |
| Land Drainage Sewer | Land Drainage Sewer | Land Drainage Sewer | Concrete | Concrete | Concrete |
| Waste Water Sewer | Waste Water Sewer | Waste Water Sewer | Asphalt | Asphalt | Asphalt |
| Manhole | Manhole | Manhole | Property Line | Property Line | Property Line |
| Curb Inlet | Curb Inlet | Curb Inlet | Survey Bar | Survey Bar | Survey Bar |
| Traffic Signal | Traffic Signal | Traffic Signal | Curb Stop | Curb Stop | Curb Stop |
| Steam Ht. | Steam Ht. | Steam Ht. | C.B. Lead | C.B. Lead | C.B. Lead |
| Gas | Gas | Gas | SideWalk | SideWalk | SideWalk |
| Monitoring Station | Monitoring Station | Monitoring Station | SideWalk Ramp | SideWalk Ramp | SideWalk Ramp |
| Elevations | Elevations | Elevations | SideWalk | SideWalk | SideWalk |
| Proposed | Proposed | Proposed | Proposed | Proposed | Proposed |

| NO. | REVISIONS | DATE | BY |
|-----|-----------|------|----|
| 1 | | | |

DESIGNED BY: DPCJ
CHECKED BY: SM
APPROVED BY: IMCK

RELEASED FOR ORIGINAL CONSTRUCTION BY: K. ZUBER, P. ENG.
DATE: JULY 21 2004

ENGINEER: I. G. MCKINNON, P. ENG.
PROFESSIONAL ENGINEER
REG. NO. 069-018-06

2004 CAPITAL WORKS WATERMAIN RENEWALS GILMORE AVENUE
ROTHESAY ST. TO 100 METRES EAST OF ROTHEsay ST.

CITY DRAWING NO. SHEET 1 OF 2 D-8572