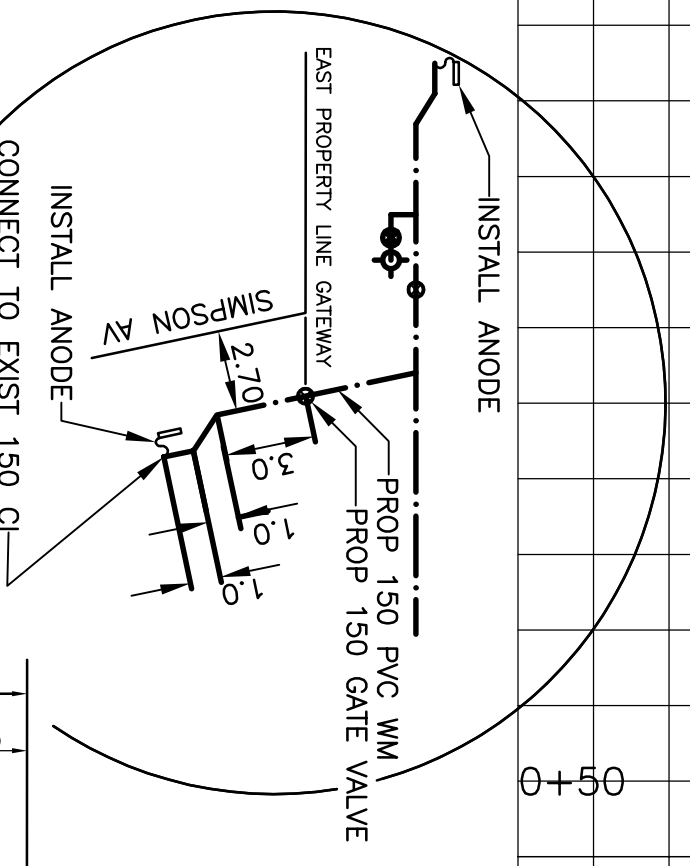
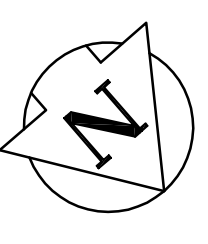
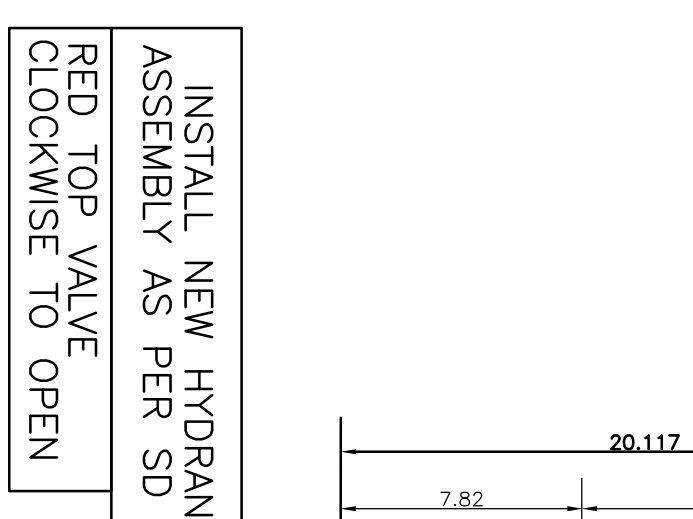


CHAINAGE ALONG EAST PROPERTY LINE OF GATEWAY

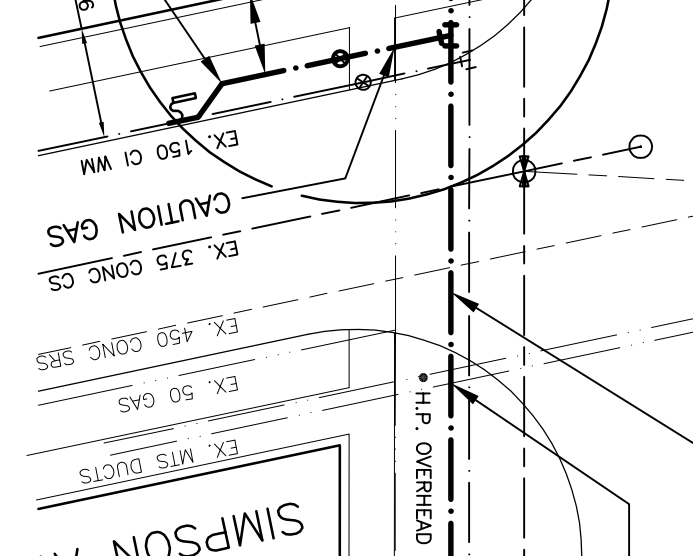
GATEWAY RD



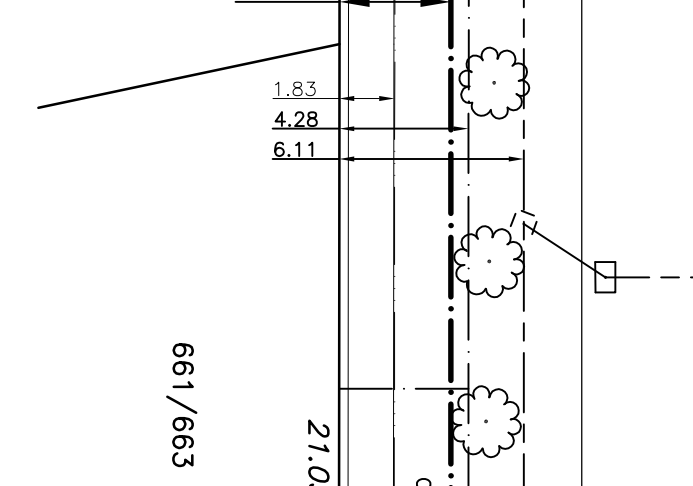
INSTALL NEW HYDRANT ASSEMBLY AS PER SD 007 RED TOP VALVE CLOCKWISE TO OPEN



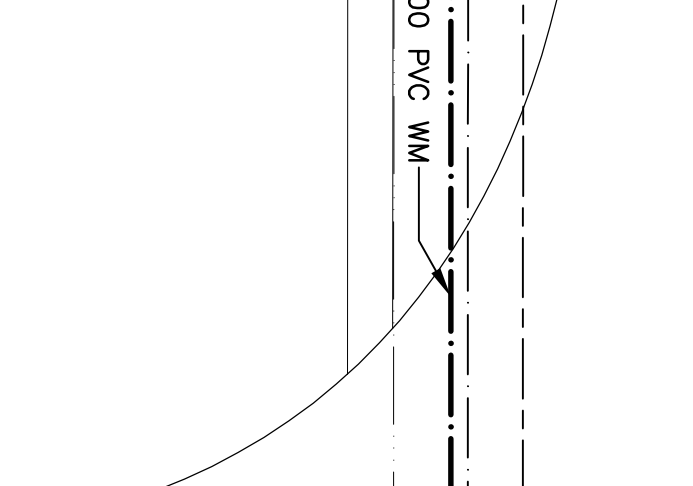
RED TOP VALVE CLOCKWISE TO OPEN



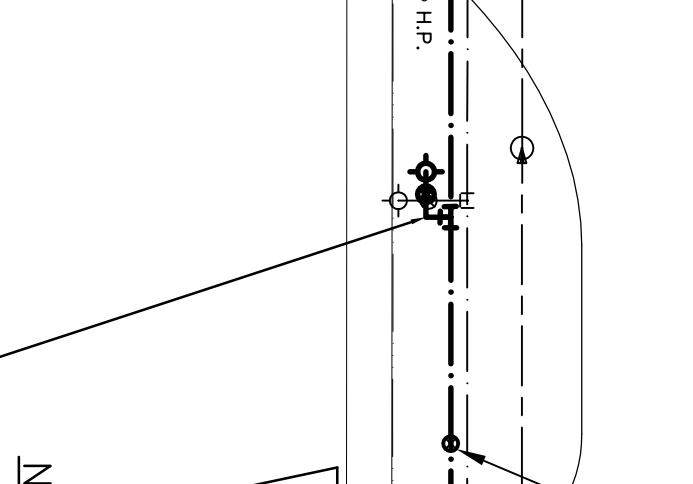
RED TOP VALVE CLOCKWISE TO OPEN



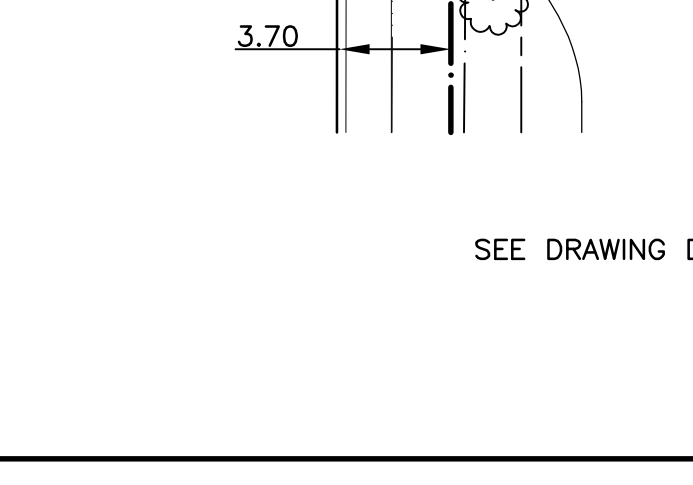
RED TOP VALVE CLOCKWISE TO OPEN



RED TOP VALVE CLOCKWISE TO OPEN



RED TOP VALVE CLOCKWISE TO OPEN



RED TOP VALVE CLOCKWISE TO OPEN

WATER SERVICE INFORMATION

ADDRESS	SIZE (mm) & TYPE	SHORT & LONG MEASUREMENT	CORP. LOCATION	REMARKS
649 GATEWAY RD RESIDENTIAL	19 COPPER	19	15.8 S HND 1	
650 GATEWAY RD RESIDENTIAL	19 COPPER	19	15.8 S HND 1	
651 GATEWAY RD RESIDENTIAL	19 COPPER	19	15.8 S HND 1	
652 GATEWAY RD RESIDENTIAL	19 COPPER	19	15.8 S HND 1	
653 GATEWAY RD RESIDENTIAL	19 COPPER	19	15.8 S HND 1	
654 GATEWAY RD RESIDENTIAL	19 COPPER	19	15.8 S HND 1	
655 GATEWAY RD RESIDENTIAL	19 COPPER	19	15.8 S HND 1	
656 GATEWAY RD RESIDENTIAL	19 COPPER	19	15.8 S HND 1	
657 GATEWAY RD RESIDENTIAL	19 COPPER	19	15.8 S HND 1	
658 GATEWAY RD RESIDENTIAL	19 COPPER	19	15.8 S HND 1	
659 GATEWAY RD RESIDENTIAL	19 COPPER	19	15.8 S HND 1	
660 GATEWAY RD RESIDENTIAL	19 COPPER	19	15.8 S HND 1	
661 GATEWAY RD RESIDENTIAL	19 COPPER	19	15.8 S HND 1	
662 GATEWAY RD RESIDENTIAL	19 COPPER	19	15.8 S HND 1	
663 GATEWAY RD RESIDENTIAL	19 COPPER	19	15.8 S HND 1	
664 GATEWAY RD RESIDENTIAL	19 COPPER	19	15.8 S HND 1	
665 GATEWAY RD RESIDENTIAL	19 COPPER	19	15.8 S HND 1	
666 GATEWAY RD RESIDENTIAL	19 COPPER	19	15.8 S HND 1	
667 GATEWAY RD RESIDENTIAL	19 COPPER	19	15.8 S HND 1	
668 GATEWAY RD RESIDENTIAL	19 COPPER	19	15.8 S HND 1	
669 GATEWAY RD RESIDENTIAL	19 COPPER	19	15.8 S HND 1	
670 GATEWAY RD RESIDENTIAL	19 COPPER	19	15.8 S HND 1	
671 GATEWAY RD RESIDENTIAL	19 COPPER	19	15.8 S HND 1	
672 GATEWAY RD RESIDENTIAL	19 COPPER	19	15.8 S HND 1	
673 GATEWAY RD RESIDENTIAL	19 COPPER	19	15.8 S HND 1	
674 GATEWAY RD RESIDENTIAL	19 COPPER	19	15.8 S HND 1	
675 GATEWAY RD RESIDENTIAL	19 COPPER	19	15.8 S HND 1	
676 GATEWAY RD RESIDENTIAL	19 COPPER	19	15.8 S HND 1	
677 GATEWAY RD RESIDENTIAL	19 COPPER	19	15.8 S HND 1	
678 GATEWAY RD RESIDENTIAL	19 COPPER	19	15.8 S HND 1	
679 GATEWAY RD RESIDENTIAL	19 COPPER	19	15.8 S HND 1	
680 GATEWAY RD RESIDENTIAL	19 COPPER	19	15.8 S HND 1	
681 GATEWAY RD RESIDENTIAL	19 COPPER	19	15.8 S HND 1	
682 GATEWAY RD RESIDENTIAL	19 COPPER	19	15.8 S HND 1	
683 GATEWAY RD RESIDENTIAL	19 COPPER	19	15.8 S HND 1	
684 GATEWAY RD RESIDENTIAL	19 COPPER	19	15.8 S HND 1	
685 GATEWAY RD RESIDENTIAL	19 COPPER	19	15.8 S HND 1	
686 GATEWAY RD RESIDENTIAL	19 COPPER	19	15.8 S HND 1	
687 GATEWAY RD RESIDENTIAL	19 COPPER	19	15.8 S HND 1	
688 GATEWAY RD RESIDENTIAL	19 COPPER	19	15.8 S HND 1	
689 GATEWAY RD RESIDENTIAL	19 COPPER	19	15.8 S HND 1	
690 GATEWAY RD RESIDENTIAL	19 COPPER	19	15.8 S HND 1	
691 GATEWAY RD RESIDENTIAL	19 COPPER	19	15.8 S HND 1	
692 GATEWAY RD RESIDENTIAL	19 COPPER	19	15.8 S HND 1	
693 GATEWAY RD RESIDENTIAL	19 COPPER	19	15.8 S HND 1	
694 GATEWAY RD RESIDENTIAL	19 COPPER	19	15.8 S HND 1	
695 GATEWAY RD RESIDENTIAL	19 COPPER	19	15.8 S HND 1	
696 GATEWAY RD RESIDENTIAL	19 COPPER	19	15.8 S HND 1	
697 GATEWAY RD RESIDENTIAL	19 COPPER	19	15.8 S HND 1	
698 GATEWAY RD RESIDENTIAL	19 COPPER	19	15.8 S HND 1	
699 GATEWAY RD RESIDENTIAL	19 COPPER	19	15.8 S HND 1	
700 GATEWAY RD RESIDENTIAL	19 COPPER	19	15.8 S HND 1	

WHOLE NUMBERS INDICATE MILLIMETRES  
DECIMALIZED NUMBERS INDICATE METRES

METRIC

LOCATION APPROVED UNDERGROUND STRUCTURES

SUPV. U/G STRUCTURES	DATE

BENCHMARK: 2004 CAPITAL WORKS WATERMAIN RENEWALS GATEWAY ROAD SIMPSON AVENUE TO 120 METRES NORTH OF SIMPSON AV.

NO.	REVISIONS	DATE	BY

DESIGNED BY: DPCJ  
DRAWN BY: DPCJ  
CHECKED BY: SM  
DESIGNED FOR: 2004 CAPITAL WORKS WATERMAIN RENEWALS GATEWAY ROAD  
VERT. SCALE: 1:50  
DATE: MAY 2004

ENGINEER: 1 G MCKINNON  
PROFESSIONAL ENGINEER  
REG. NO. 089-018-04

THE CITY OF WINNIPEG  
WATER AND WASTE DEPARTMENT  
2004 CAPITAL WORKS WATERMAIN RENEWALS GATEWAY ROAD  
SIMPSON AVENUE TO 120 METRES NORTH OF SIMPSON AV.

CITY DRAWING NO. SHEET 1 OF 2 D-8570

- NOTES:
1. ALL GATE VALVES ARE TO BE CLOCKWISE TO OPEN WITH A RED OPERATING NUT
  2. WATERMAIN TO BE INSTALLED BY TRENCHLESS METHODS.
  3. BACKFILL IS CLASS 5 WITHIN BOULEVARD AND CLASS 3 WITHIN PARKWAY/SIDEWALK OR WITHIN 1.0m OF PARKWAY/SIDEWALK.
  4. WATER SERVICES ARE 19mm UNLESS OTHERWISE NOTED.
  5. MINIMUM COVER TO TOP OF WATERMAIN SHALL BE 2.4m.
  6. LOCATION OF ALL SERVICES TO BE CONFIRMED IN FIELD.
  7. EXPOSED EXISTING WATERMAIN TO BE CONFIRMED DEPTH PRIOR TO CONSTRUCTION.
  8. ALL LEAD SERVICES TO BE RENEWED.
  9. SERVICES TO BE RENEWED SHALL BE REPLACED FROM WATERMAIN TO PROPERTY LINE. ALL OTHERS TO BE RECONNECTED.

SEE DRAWING D-8571

EXISTING	LEGEND - PLAN	PROPOSED	EXISTING	LEGEND - PROFILE	PROPOSED
Watermain	Watermain	Watermain	Center Line	Center Line	Center Line
Hydrant	Hydrant	Hydrant	North Gutter Line	North Gutter Line	North Gutter Line
Valve	Valve	Valve	South Gutter Line	South Gutter Line	South Gutter Line
Land Drainage Sewer	Land Drainage Sewer	Land Drainage Sewer	Watermain	Watermain	Watermain
Waste Water Sewer	Waste Water Sewer	Waste Water Sewer	Valve	Valve	Valve
Manhole	Manhole	Manhole	300mm U.S.	300mm U.S.	300mm U.S.
Catch Basin	Catch Basin	Catch Basin	250mm U.S.	250mm U.S.	250mm U.S.
Curb Inlet	Curb Inlet	Curb Inlet	Waste Water Sewer	Waste Water Sewer	Waste Water Sewer
Traffic Signal	Traffic Signal	Traffic Signal	Junctions	Junctions	Junctions
Steam Ht.	Steam Ht.	Steam Ht.	C.P. Anode	C.P. Anode	C.P. Anode
Gas	Gas	Gas	Side Walk Ramp	Side Walk Ramp	Side Walk Ramp
Existing	Existing	Existing	Elevations	Elevations	Elevations
Existing	Existing	Existing	Monitoring Station	Monitoring Station	Monitoring Station