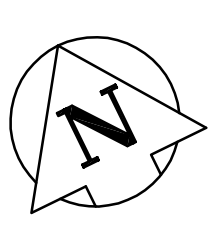


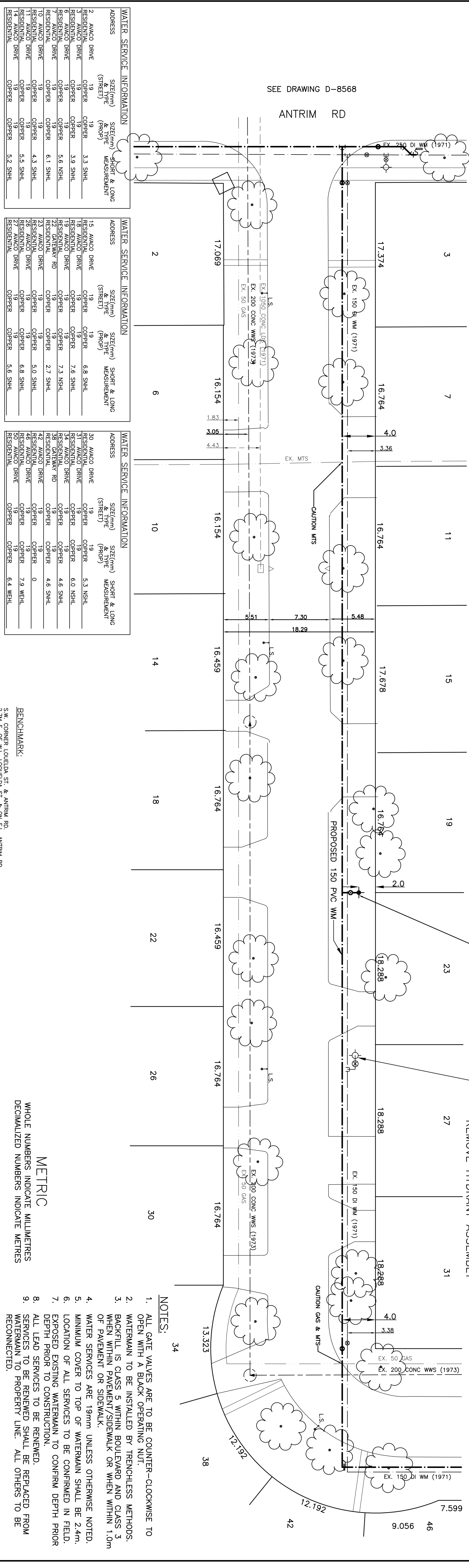
CHAINAGE ALONG EAST PROPERTY LINE OF AVACO

AVACO DR (WEST LEG)



SEE DRAWING D-8569

SEE DRAWING D-8568



WATER SERVICE INFORMATION

ADDRESS	SIZE (mm)	SIZE (mm)	SHORT & LONG MEASUREMENT
(STREET)	(R.O.D.)	(R.O.D.)	
2 AVACO DRIVE	19	19	3.3 SNH
RESIDENTIAL DRIVE	COPPER	COPPER	
RESIDENTIAL DRIVE	19	19	3.3 SNH
RESIDENTIAL DRIVE	COPPER	COPPER	
7 AVACO DRIVE	19	19	5.6 SNH
RESIDENTIAL DRIVE	COPPER	COPPER	
7 AVACO DRIVE	19	19	6.1 SNH
RESIDENTIAL DRIVE	COPPER	COPPER	
10 AVACO DRIVE	19	19	4.3 SNH
RESIDENTIAL DRIVE	COPPER	COPPER	
14 AVACO DRIVE	19	19	5.5 SNH
RESIDENTIAL DRIVE	COPPER	COPPER	
14 AVACO DRIVE	19	19	5.2 SNH
RESIDENTIAL DRIVE	COPPER	COPPER	

WATER SERVICE INFORMATION

ADDRESS	SIZE (mm)	SIZE (mm)	SHORT & LONG MEASUREMENT
(STREET)	(R.O.D.)	(R.O.D.)	
15 AVACO DRIVE	19	19	6.8 SNH
RESIDENTIAL DRIVE	COPPER	COPPER	
RESIDENTIAL DRIVE	19	19	7.3 SNH
RESIDENTIAL DRIVE	COPPER	COPPER	
22 AVACO DRIVE	19	19	2.7 SNH
RESIDENTIAL DRIVE	COPPER	COPPER	
22 AVACO DRIVE	19	19	5.0 SNH
RESIDENTIAL DRIVE	COPPER	COPPER	
22 AVACO DRIVE	19	19	6.6 SNH
RESIDENTIAL DRIVE	COPPER	COPPER	
22 AVACO DRIVE	19	19	5.6 SNH
RESIDENTIAL DRIVE	COPPER	COPPER	

WATER SERVICE INFORMATION

ADDRESS	SIZE (mm)	SIZE (mm)	SHORT & LONG MEASUREMENT
(STREET)	(R.O.D.)	(R.O.D.)	
30 AVACO DRIVE	19	19	5.3 SNH
RESIDENTIAL DRIVE	COPPER	COPPER	
RESIDENTIAL DRIVE	19	19	6.0 SNH
RESIDENTIAL DRIVE	COPPER	COPPER	
38 AVACO DRIVE	19	19	4.6 SNH
RESIDENTIAL DRIVE	COPPER	COPPER	
38 AVACO DRIVE	19	19	4.4 SNH
RESIDENTIAL DRIVE	COPPER	COPPER	
44 AVACO DRIVE	19	19	0
RESIDENTIAL DRIVE	COPPER	COPPER	
50 AVACO DRIVE	19	19	7.8 WCH
RESIDENTIAL DRIVE	COPPER	COPPER	
50 AVACO DRIVE	19	19	6.4 WCH
RESIDENTIAL DRIVE	COPPER	COPPER	

LOCATION APPROVED UNDERGROUND STRUCTURES

NO.	DESCRIPTION	DATE

BENCHMARK:

NO.	DESCRIPTION	DATE	ELEV.

SEG ENGINEERING INC.
 200 TACHE AVENUE
 WINNIPEG, MANITOBA
 (204) 233-2113

DESIGNED BY: DPCJ
 CHECKED BY: SM
 DRAWN BY: DPCJ
 DATE: MAY 2004

REGISTERED PROFESSIONAL ENGINEER
 1. G. MCKINNON
 REG. NO. 111-020
 CONSULTANT DRAWING NO. 069-018-02

METRIC
 WHOLE NUMBERS INDICATE MILLIMETRES
 DECIMALIZED NUMBERS INDICATE METRES

- NOTES:**
1. ALL GATE VALVES ARE TO BE COUNTER-CLOCKWISE TO OPEN WITH A BLACK OPERATING NUT
 2. WATERMAIN TO BE INSTALLED BY TRENCHLESS METHODS
 3. BACKFILL IS CLASS 5 WITHIN BOLLARD AND CLASS 3 WHEN WITHIN PAVEMENT/SIDEWALK OR WITHIN 1.0m OF PAVEMENT OR SIDEWALK
 4. WATER SERVICES ARE 19mm UNLESS OTHERWISE NOTED.
 5. MINIMUM COVER TO TOP OF WATERMAIN SHALL BE 2.4m.
 6. LOCATION OF ALL SERVICES TO BE CONFIRMED IN FIELD.
 7. EXPOSED EXISTING WATERMAIN TO CONFIRM DEPTH PRIOR TO DEPTH PRIOR TO CONSTRUCTION.
 8. ALL LEAD SERVICES TO BE RENEWED.
 9. SERVICES TO BE RENEWED SHALL BE REPLACED FROM WATERMAIN TO PROPERTY LINE. ALL OTHERS TO BE RECONNECTED.

THE CITY OF WINNIPEG
 WATER AND WASTE DEPARTMENT

2004 CAPITAL WORKS WATERMAIN RENEWALS
 AVACO DRIVE (WEST LEG)
 ANTRIM RD TO SOUTH LEG OF AVACO DRIVE

CITY DRAWING NO. SHEET 1 OF 2
 D-8568