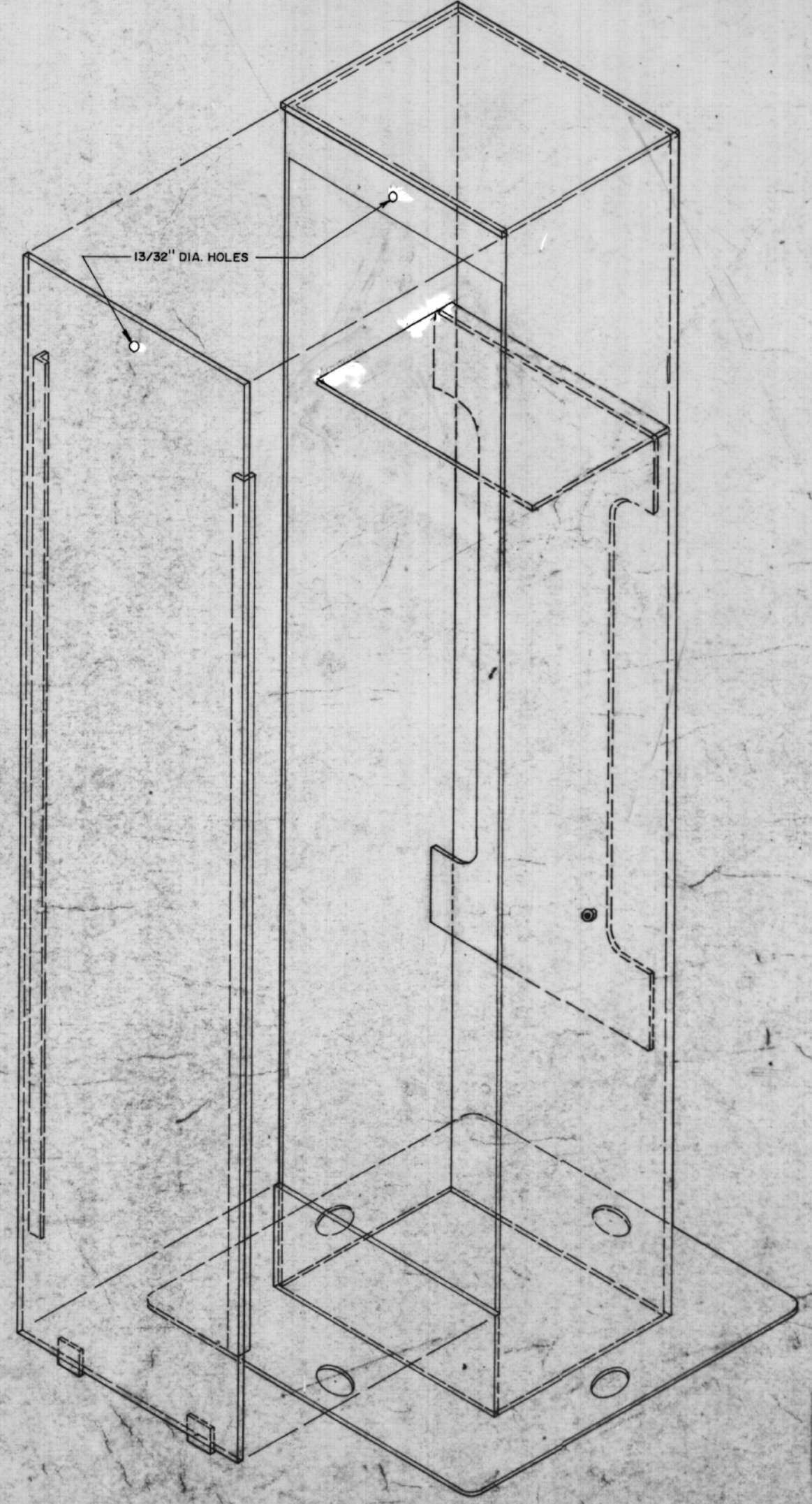
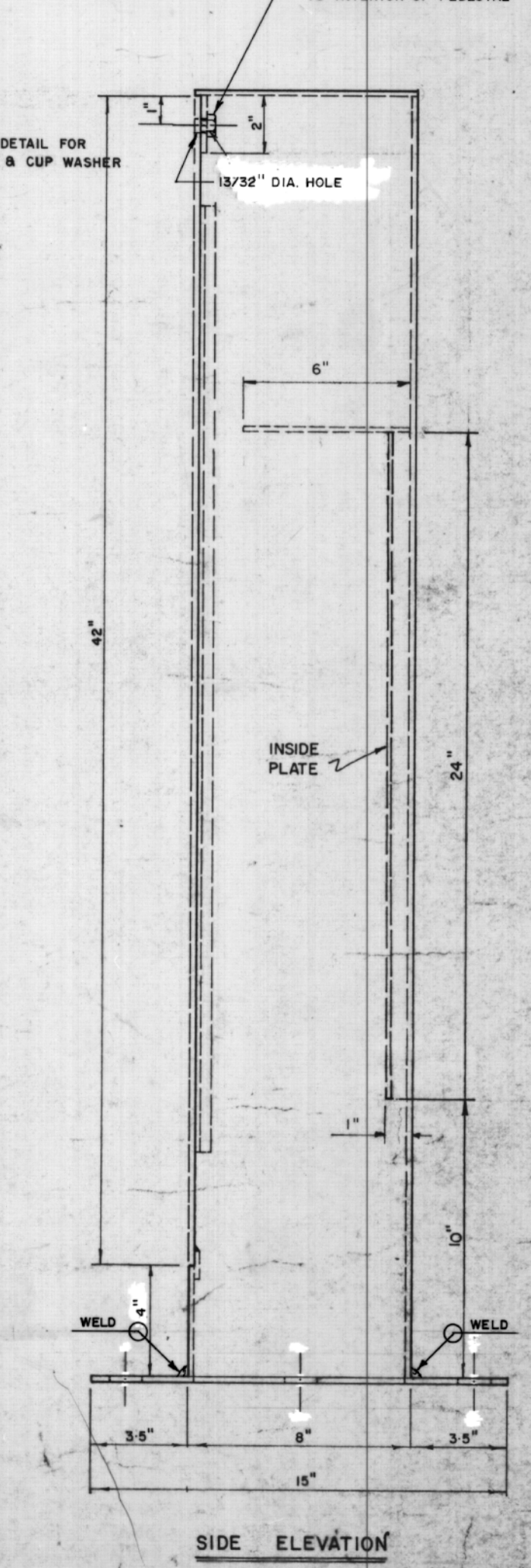
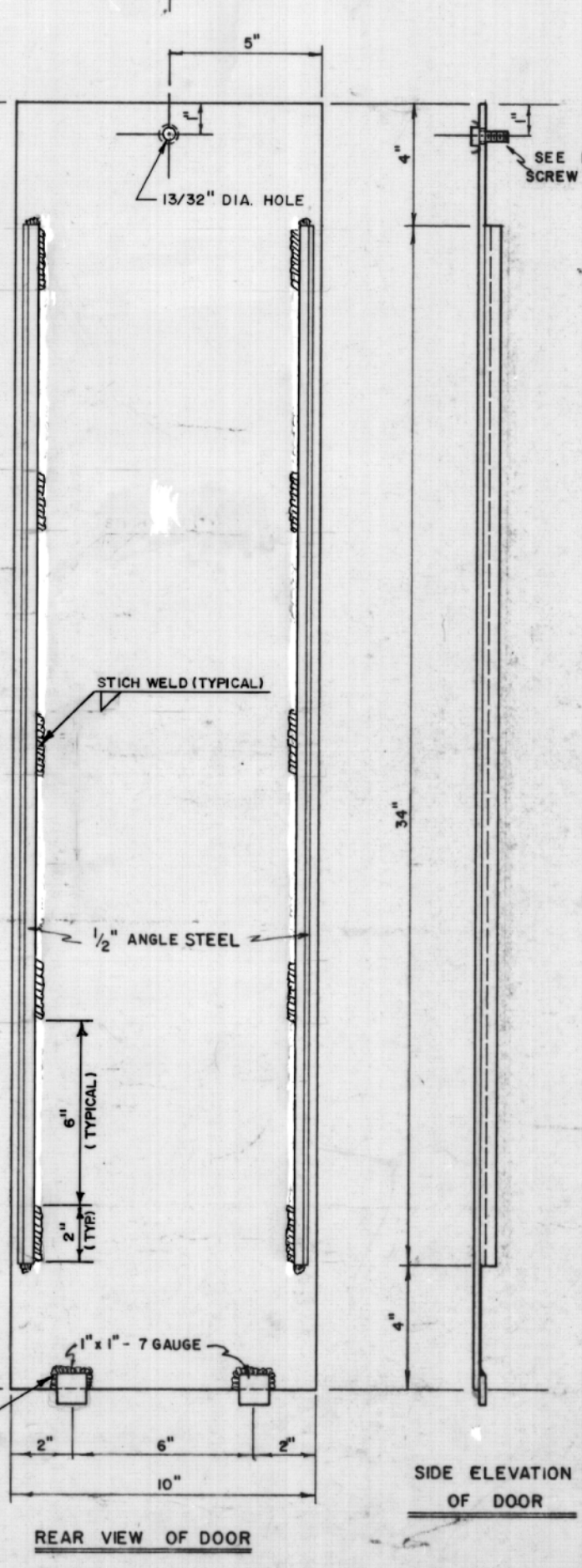
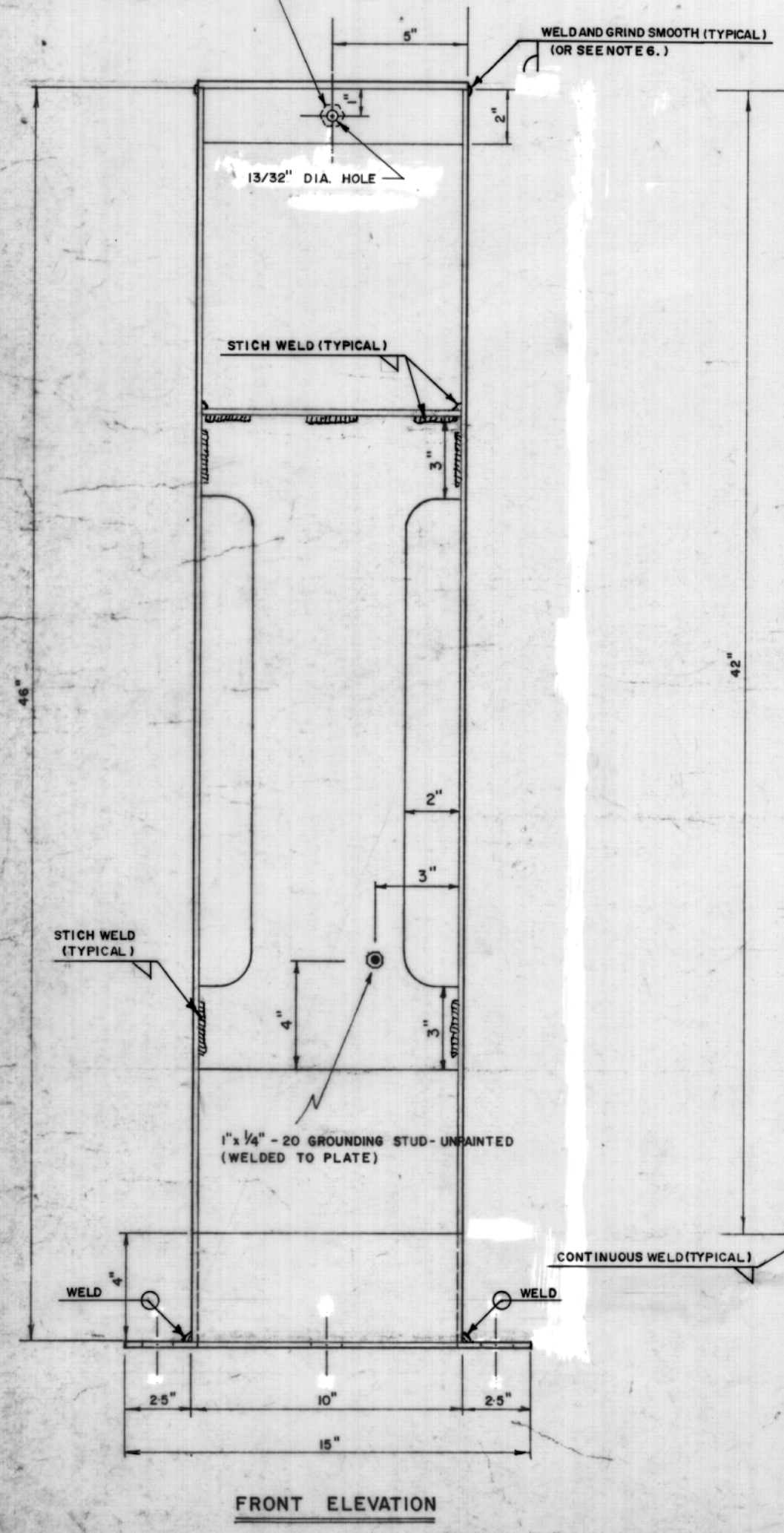
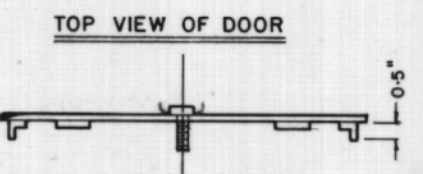


- NOTES:
1. PEDESTAL TO BE 7 GAUGE ATMOSPHERIC CORROSION RESISTANT STEEL.
 2. MOUNTING NUT WELDED AS SHOWN FOR 3/8" DOOR FASTENER BOLT.
 3. INTERIOR AND EXTERIOR SURFACES OF ALL MATERIAL (EXCEPT MOUNTING SCREW, NUT AND GROUNDING STUD AS NOTED) SHALL BE HOT DIP GALVANIZED AFTER FABRICATION IN ACCORDANCE WITH CSA STANDARD G164M, LATEST REVISION.
 4. BOTTOM INTERIOR OF PEDESTAL TO BE OPEN.
 5. INSIDE PANEL AND/OR SHELF MAY BE 12 GAUGE.
 6. AT OPTION OF MANUFACTURER, THE PEDESTAL SIDES, BACK AND TOP MAYBE CONSTRUCTED FROM ONE PIECE INSTEAD OF 3 SEPARATE PIECES. ALL OUTSIDE WELDS MUST BE GROUND SMOOTH.

STAINLESS STEEL NUT WELDED TO INTERIOR OF PEDESTAL



REVISIONS	
No.	DESCRIPTION
6	02-15 ADDED NOTES 6 - WELD DETAIL
5	95-7-6 REVISED NOTES
4	87-10-24 NOTE 3 ADDED
3	85-2-12 TRAY DELETED
2	83-5-1 REVISED NOTE 1 & ADDED NOTE 2
1	83-5-1 REMOVED SHELVES B ADDED PLATE
No.	DATE