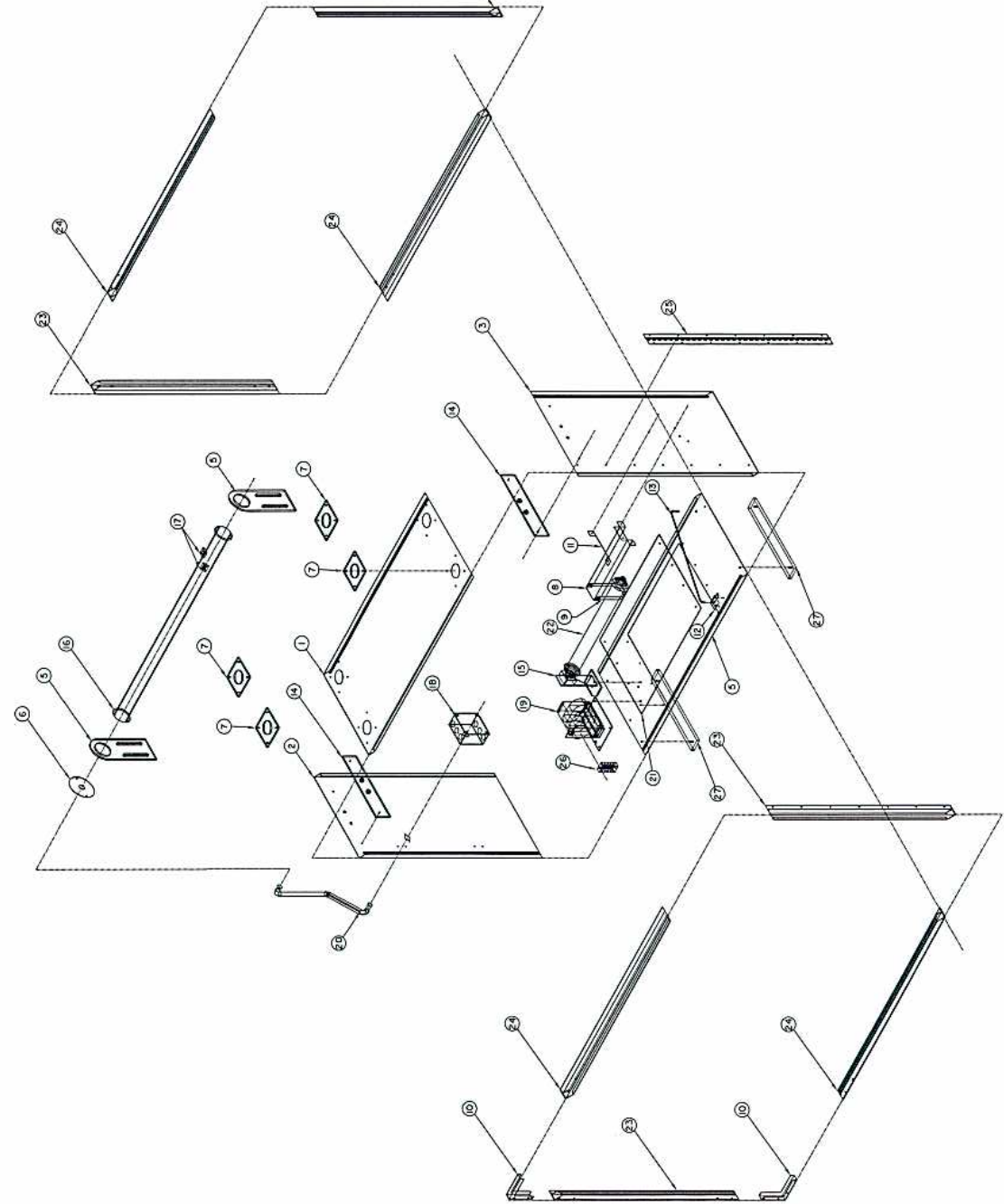
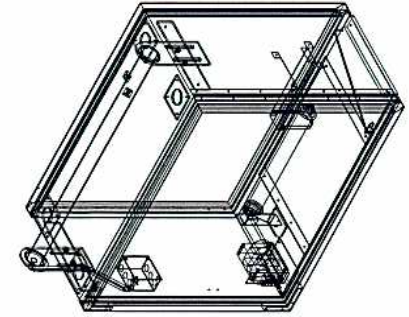


PT. No.	ITEM	QTY	DESCRIPTION	REFERENCE'S DWG
1.	CORROD UNIT TOP PANEL	1	0.054 ALUMINUM PLATE 18" X 36"	51-143.3 OF 3
2.	CORROD UNIT BOTTOM PANEL	1	0.054 ALUMINUM PLATE 18" X 36"	51-143.3 OF 3
3.	CORROD UNIT RIGHT PANEL	1	0.054 ALUMINUM PLATE 18" X 36"	51-143.3 OF 3
4.	CORROD UNIT LEFT PANEL	1	0.054 ALUMINUM PLATE 18" X 36"	51-143.3 OF 3
5.	HANGER UNIT END PANEL	2	1/4" ALUMINUM PLATE 4" X 10" X 1/8"	51-143.3 OF 3
6.	SPACERS	4	3/8" ALUMINUM SPACER PLATE 4" X 4"	51-143.3 OF 3
7.	LAMP SUPPORT	1	0.054 ALUMINUM CHANNEL 4.5" X 8" X 1/8"	51-143.3 OF 3
8.	BUILD HANGER	1	0.054 ALUMINUM 1/2" X 3/8" X 1/8"	51-143.3 OF 3
9.	WALL MOUNTING PLATE	1	0.054 ALUMINUM 1/2" X 3/8" X 1/8"	51-143.3 OF 3
10.	LAMP SUPPORT BRACKET	1	0.054 ALUMINUM 1/2" X 3/8" X 1/8"	51-143.3 OF 3
11.	DOOR RETAINER BRACKET	1	0.054 ALUMINUM 1/2" X 3/8" X 1/8"	51-143.3 OF 3
12.	DOOR RETAINER BRACKET	1	0.054 ALUMINUM 1/2" X 3/8" X 1/8"	51-143.3 OF 3
13.	DOOR RETAINER BRACKET	1	0.054 ALUMINUM 1/2" X 3/8" X 1/8"	51-143.3 OF 3
14.	DOOR RETAINER BRACKET	1	0.054 ALUMINUM 1/2" X 3/8" X 1/8"	51-143.3 OF 3
15.	SOODUM LAMP SOCKET BRACKET ASSEMBLY	1	PLATES WELDED TOGETHER 2 1/2" X 1/2" X 1/2" 1/8" ALUMINUM PLATE 2" X 4" X 1/8" 2 3/16" O.D. 6061-T6 ALUMINUM TUBING AND END 1/4" ALUMINUM PLATE 2 1/2" X 1/2" X 1/2" 1/8"	51-143.3 OF 3
16.	ALUMINUM TUBING	1	2 3/16" O.D. 6061-T6 ALUMINUM TUBING AND END 1/4" ALUMINUM PLATE 2 1/2" X 1/2" X 1/2" 1/8"	51-143.3 OF 3
17.	JUNCTION BOX	2	ALUMINUM BLOCKS 5/8" X 1/2" X 1/2"	51-143.3 OF 3
18.	JUNCTION BOX	2	ALUMINUM BLOCKS 5/8" X 1/2" X 1/2"	51-143.3 OF 3
19.	SOODUM BALLAST	1	4 1/4" DEEP I/C/W COVER	51-143.3 OF 3
20.	SOODUM BALLAST	1	SEE GENERAL NOTE #4	51-143.3 OF 3
21.	SOODUM LIGHTER TUBS	1	1/8" X 1/8" X 1/8" (CLEAR)	51-143.3 OF 3
22.	SOODUM LAMP	1	1/0 EE SUPPLIED BY CITY	51-143.3 OF 3
23.	LEFT 1/2 SECTION (LEFT & RIGHT)	4	1/4" X 7/8" X 1/4" E-2-12 SECTION 32 3/4" LONG	51-143.3 OF 3
24.	RIGHT 1/2 SECTION (LEFT & RIGHT)	4	1/4" X 7/8" X 1/4" E-2-12 SECTION 32 3/4" LONG	51-143.3 OF 3
25.	TERMINAL BLOCK	1	STAINLESS STEEL PIANO HINGE 3/4" X 1 1/4"	51-143.3 OF 3
26.	TERMINAL BLOCK	1	STAINLESS STEEL PIANO HINGE 3/4" X 1 1/4"	51-143.3 OF 3
27.	SHIPPING BLOCK	2	2" X 1 1/2" X 3/8" WOOD BLOCK	51-143.3 OF 3
28.	SHIPPING BLOCK	2	2" X 1 1/2" X 3/8" WOOD BLOCK	51-143.3 OF 3
29.	ALUMINUM BRACKET	1	1/4" X 1/2" X 1/2" ALUMINUM BRACKET	51-143.3 OF 3



ASSEMBLY VIEW



ISOMETRIC VIEW

THE CITY OF WINNIPEG PUBLIC WORKS DEPARTMENT Winnipeg TRANSPORTATION DIVISION		Scale: 1/8"=1' DRAWING NO. ST-145 SHEET 1 OF 3
		INTERNALLY ILLUMINATED PEDESTRIAN CORRIDOR SIGN UNIT 36" X 32" ASSEMBLY DRAWING
DESIGNED BY: _____ DATE: _____ CHECKED BY: _____ DATE: _____ DRAWN BY: _____ DATE: _____ REVISIONS: _____ APPROVED BY: _____ DATE: _____	TRAFFIC SIGNAL SYSTEMS/MATERIALS ENGINEER _____ DATE: _____ MANAGER OF TRANSPORTATION _____ DATE: _____ CHIEF ENGINEER _____ DATE: _____	PROJECT NUMBER FROM MANUAL: INT. #P-158 DATE: _____ BY: _____

