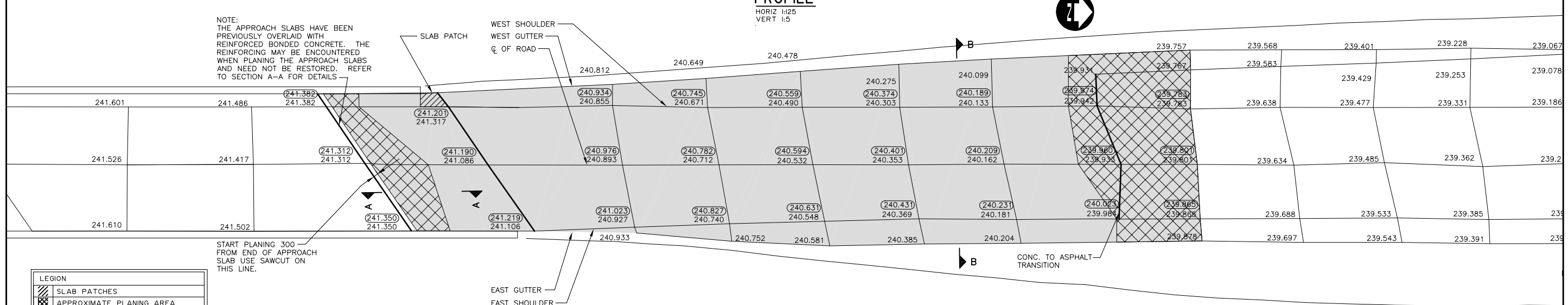


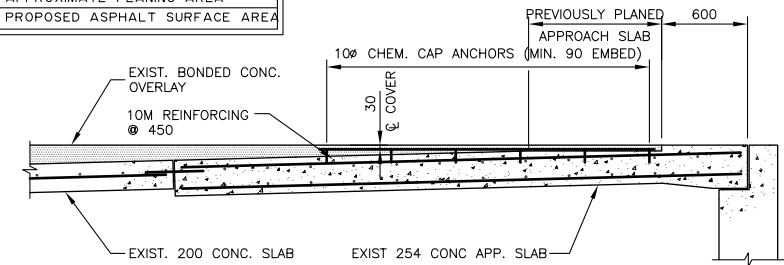
**PROFILE**  
HORIZ 1:25  
VERT 1:5



START PLANING 300 — FROM END OF APPROACH SLAB USE SAWCUT ON THIS LINE.

**LEGION**

	SLAB PATCHES
	APPROXIMATE PLANING AREA
	PROPOSED ASPHALT SURFACE AREA



**SECTION A-A**  
SCALE: 1:25  
EXISTING BONDED OVERLAY ON APPROACH SLAB

DRAWING REDUCED  
NOT TO SCALE



**METRIC**  
WHOLE NUMBERS INDICATE MILLIMETRES  
DECIMALIZED NUMBERS INDICATE METRES

**PLAN**  
1:25

B.M. ELEV. 242.614	DESIGNED BY: R.A.W.
	DRAWN BY: K.C.
	CHECKED BY: R.A.W.
	APPROVED BY:
	SCALE: HORIZ. AS SHOWN VERT.
	DATE: MAY 10, 2004
2 ISSUED FOR TENDER JUNE 9/04 KC	AUTHORIZED BY:
1 ISSUED FOR CITY REVIEW MAY 28/04 KC	DATE:
NO. REVISIONS DATE BY	CITY BRIDGE ENGINEER

ENGINEER'S SEAL  
PROVINCE OF MANITOBA  
REGISTERED PROFESSIONAL ENGINEER  
**R.A. WIEBE**  
CONSULTANT PROJECT NO.  
**04-2937-1000**



**THE CITY OF WINNIPEG**  
PUBLIC WORKS DEPARTMENT  
**2004 BRIDGE MAINTENANCE**  
ROUTE 20 @ KEEWATIN OVERPASS  
NORTH END SOUTH BOUND  
MISCELLANEOUS PAVEMENT REPAIRS  
AND ASPHALT SURFACING  
PLAN AND PROFILE

CITY DRAWING NUMBER <b>B123-04-02</b>
SHEET <b>2</b> OF <b>4</b>

B.M. MONUMENT, BRASS CAP ON THE TOP OF THE SOUTH EAST RETAINING WALL RAMP OF THE NORTH BOUND STRUCTURE.