

TYPICAL ALLEY CROSS SECTION
SCALE: 1:50
(STA 0+62.6 TO STA 1+95.0)

TYPICAL ALLEY CROSS SECTION
SCALE: 1:50
(STA 2+00)

SUB-DRAIN DETAIL
SCALE: 1:20

EXISTING	PROPOSED	LEGEND-PLAN	EXISTING	PROPOSED	LEGEND-PROFILE
○	●	TEST HOLE	○	●	Q PROFILE
○	●	POLES	○	●	N/W LANE EDGE
○	●	GUY WIRE	○	●	S/E LANE EDGE
○	●	LIGHT STANDARD	○	●	PARKING/DRIVEWAY WINDOW/DOOR SILL
○	●	BACK OF CURB	○	●	
○	●	CONCRETE	○	●	
○	●	ASPHALT	○	●	
○	●	SIDEWALK	○	●	
○	●	PROPERTY LINE	○	●	
○	●	VALVE	○	●	
○	●	MANHOLE	○	●	
○	●	CATCH BASIN	○	●	
○	●	CURB INLET	○	●	
○	●	LEGEND-PLAN	○	●	LEGEND-PROFILE

EXISTING	PROPOSED	LEGEND-PLAN	EXISTING	PROPOSED	LEGEND-PROFILE
○	●	TEST HOLE	○	●	Q PROFILE
○	●	POLES	○	●	N/W LANE EDGE
○	●	GUY WIRE	○	●	S/E LANE EDGE
○	●	LIGHT STANDARD	○	●	PARKING/DRIVEWAY WINDOW/DOOR SILL
○	●	BACK OF CURB	○	●	
○	●	CONCRETE	○	●	
○	●	ASPHALT	○	●	
○	●	SIDEWALK	○	●	
○	●	PROPERTY LINE	○	●	
○	●	VALVE	○	●	
○	●	MANHOLE	○	●	
○	●	CATCH BASIN	○	●	
○	●	CURB INLET	○	●	
○	●	LEGEND-PLAN	○	●	LEGEND-PROFILE

NO.	REVISIONS	DATE	BY
0	ISSUED FOR TENDER	12/05/04	CR
1	ISSUED FOR REVIEW	14/05/04	CR
A			

KGS CONSULTING ENGINEERS & PROJECT MANAGERS
WINNIPEG
THUNDER BAY (807) 346-2233

ENGINEER'S SEAL
M.C. KOMOTHAN
PROVINCIAL ENGINEER
25073

THE CITY OF WINNIPEG
PUBLIC WORKS DEPARTMENT
ENGINEERING SERVICES DIVISION

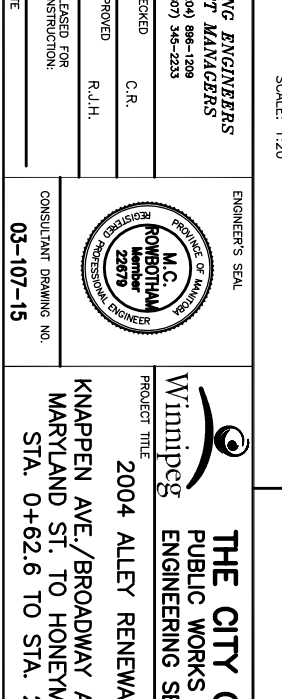
PROJECT TITLE: 2004 ALLEY RENEWALS
KNAPPEN AVE./BROADWAY AVE. LANE MARYLAND ST. TO HONEYMAN AVE. STA. 0+62.6 TO STA. 2+00

SHEET 02 OF 12
COMPUTER FILE NAME: 03-107-15
CITY DRAWING NUMBER: *

APGIN
Certificate of Authorization
KGS Group
No. 245 Expiry: April 30, 2005

METRIC
WHOLE NUMBERS INDICATE MILLIMETRES
DECIMALIZED NUMBERS INDICATE METRES

WARNING
IF PAPER EQUIPMENT OR INSTRUMENTS ARE TO BE USED FOR DIMENSION ON THIS PROJECT THE CONTRACTOR MUST:
1) NOTIFY THE GAS COMPANY OF THE PROPOSED LOCATION
2) TAKE PRECAUTIONS TO AVOID DAMAGE TO GAS COMPANY INSTALLATIONS.
SEE PROVINCIAL REGULATION 210/72 FOR DETAILS.



DESIGNED BY	CHECKED BY	DATE
B.S.	C.R.	
DRAWN BY	APPROVED BY	DATE
D.W.	R.J.H.	

LOCATION APPROVED UNDERGROUND STRUCTURES
DATE: _____

NOTE:
UNDERGROUND STRUCTURES AS SHOWN ON THIS DRAWING ARE TO BE CONSTRUCTED IN ACCORDANCE WITH THE DESIGN AND CONSTRUCTION REQUIREMENTS OF THE CITY OF WINNIPEG. THE CONTRACTOR SHALL BE RESPONSIBLE FOR OBTAINING ALL NECESSARY PERMITS AND APPROVALS FROM THE CITY OF WINNIPEG AND ANY OTHER AGENCIES INVOLVED. THE CONTRACTOR SHALL BE RESPONSIBLE FOR PROTECTING ALL EXISTING UTILITIES AND STRUCTURES. THE CONTRACTOR SHALL BE RESPONSIBLE FOR THE PROTECTION OF ALL SERVICES UNDER THE GROUND. THE CONTRACTOR SHALL BE RESPONSIBLE FOR THE PROTECTION OF ALL SERVICES UNDER THE GROUND. THE CONTRACTOR SHALL BE RESPONSIBLE FOR THE PROTECTION OF ALL SERVICES UNDER THE GROUND.

150 REINFORCED CONCRETE PAVEMENT
75 GRANULAR BASE COURSE
300 MINIMUM SUB-BASE

150 PVC SUB-DRAIN
(SEE SUB-DRAIN DETAIL)

WOVEN GEOTEXTILE

BACKFILL & FINISH TO MATCH EXISTING SURFACE

DEFORMED THE BARS SD-212

SAWN JOINT SD-212

BACKFILL & FINISH TO MATCH EXISTING SURFACE