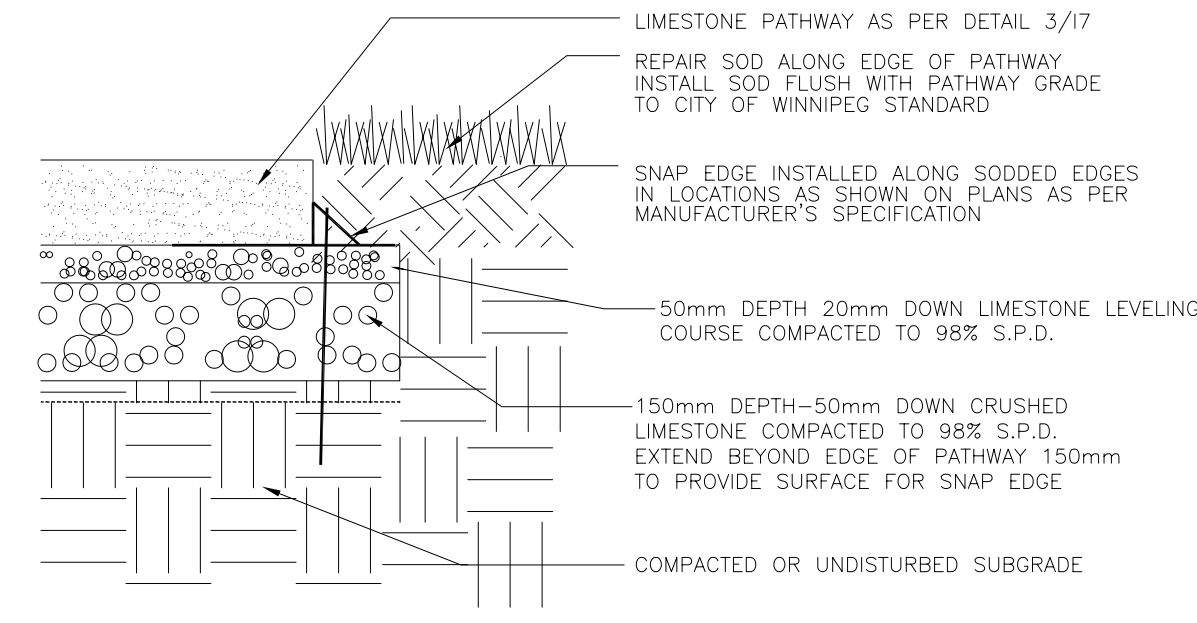
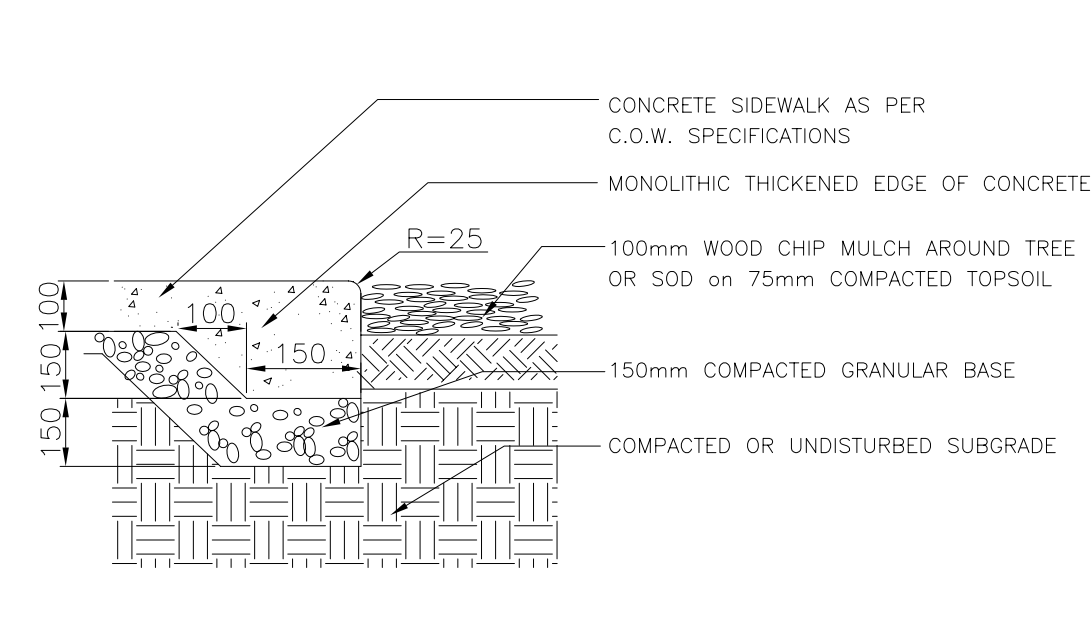


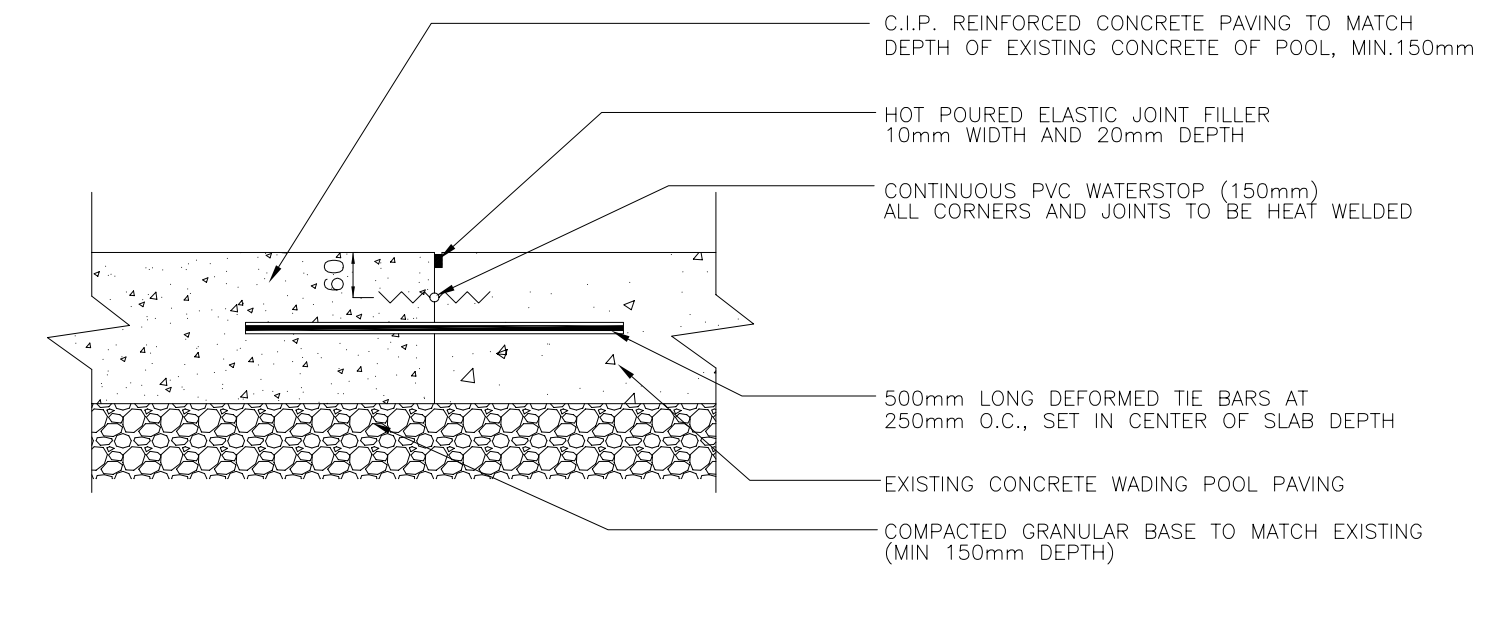
**3 CRUSHED LIMESTONE PATHWAY**  
L2 N.T.S.



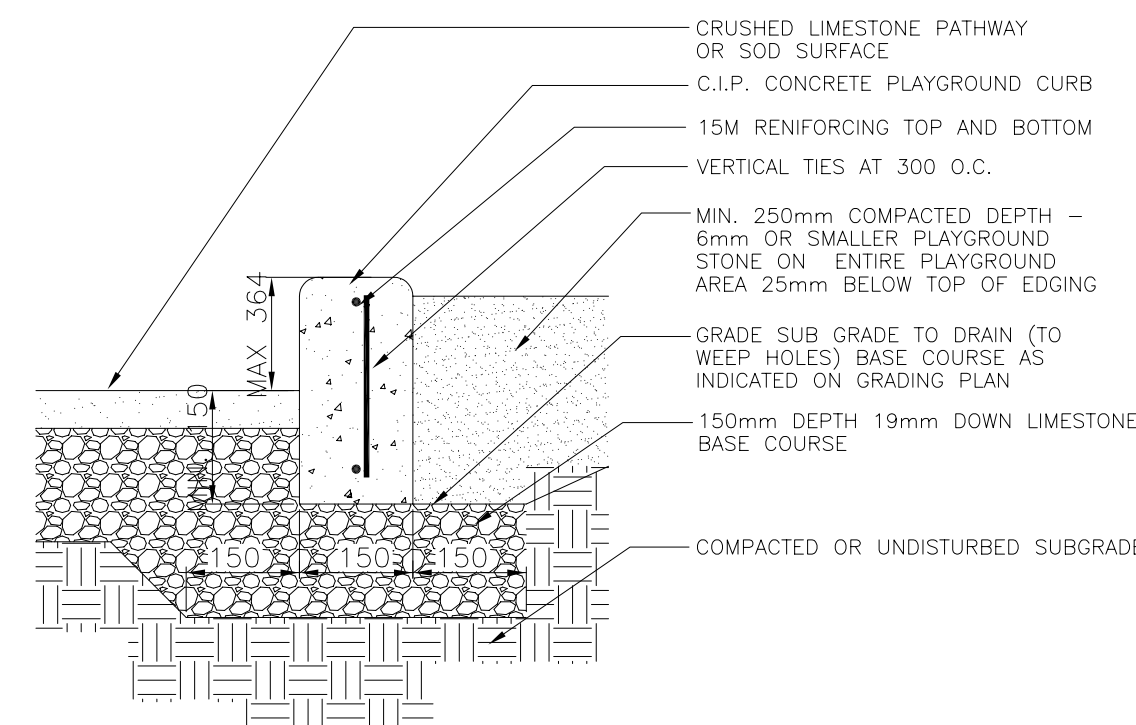
**4 SNAP EDGE**  
L2 N.T.S.



**5 THICKENED EDGE OF SIDEWALK**  
L2 N.T.S.

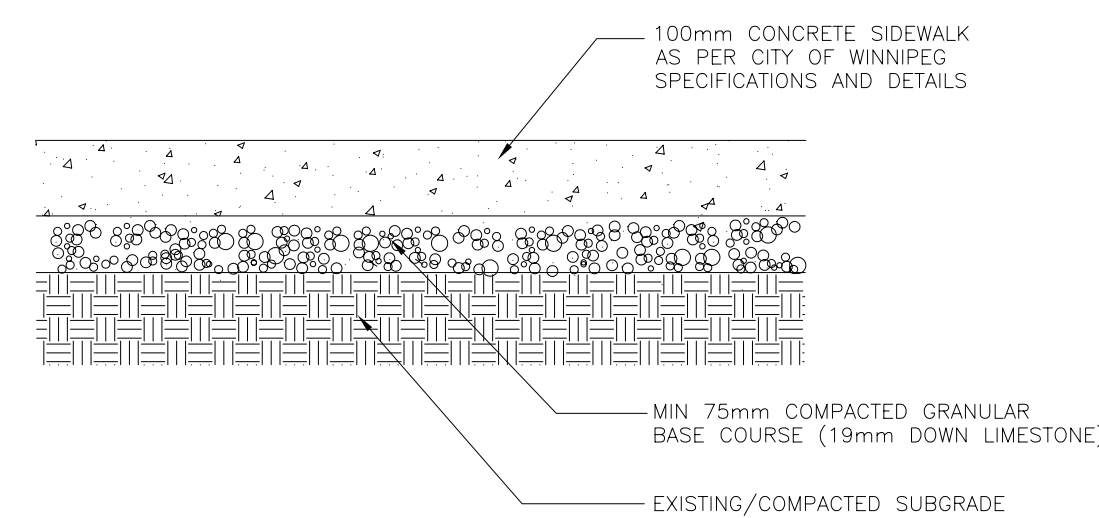


**6 TIE JOINT IN CONCRETE POOL**  
L2 N.T.S.



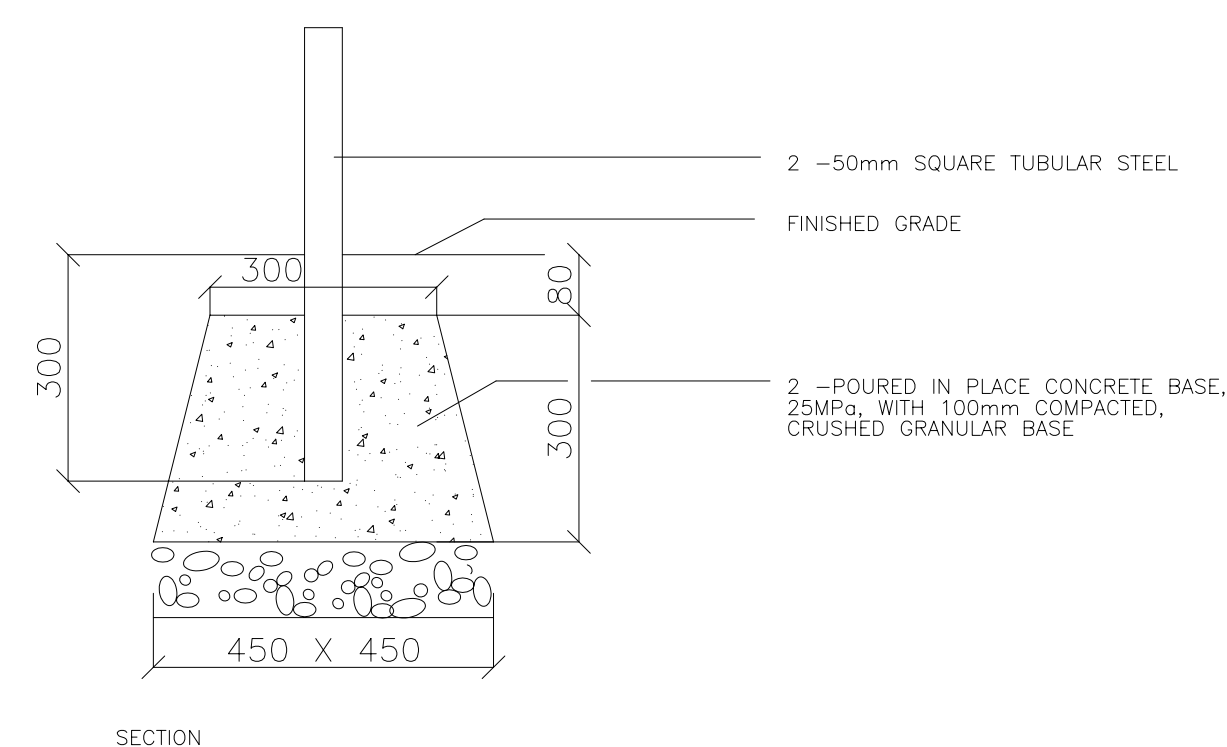
NOTE: 50mm # WEEP HOLES 600mm O.C. REQUIRED ON NORTH SIDE WHERE GROUND LEVEL MEETS PLAYGROUND SUBGRADE LEVEL. INSTALL FILTER CLOTH ALONG LENGTH OF CURB WITH WEEP HOLES

**7 C.I.P. CONCRETE PLAYGROUND CURB**  
L2 N.T.S.



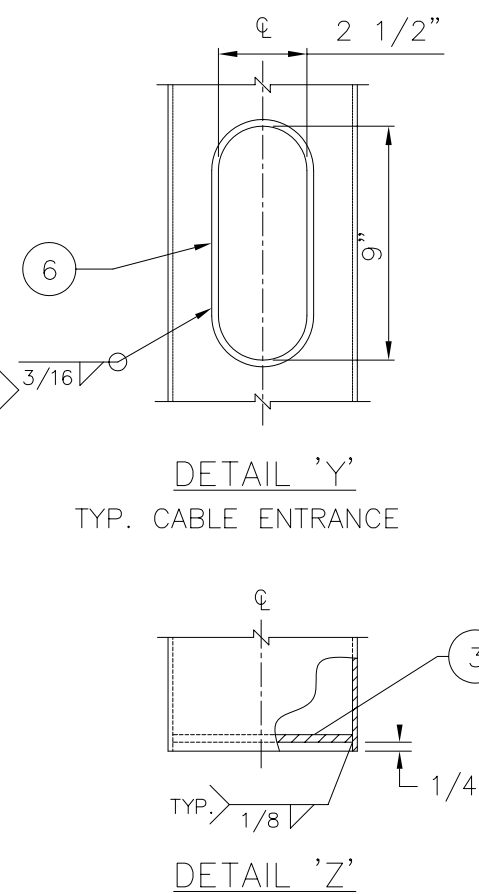
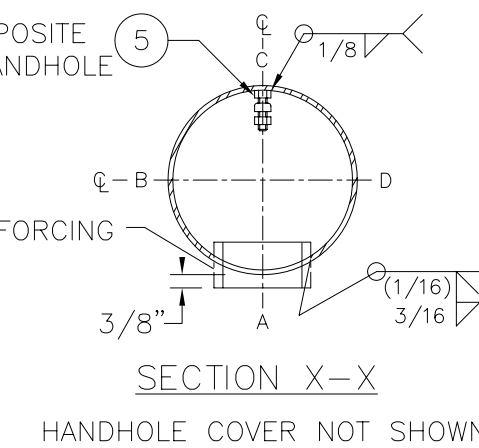
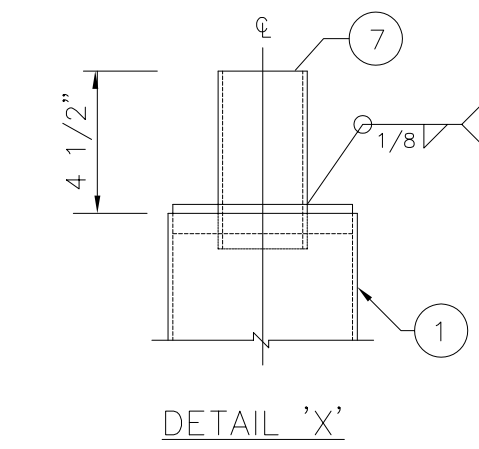
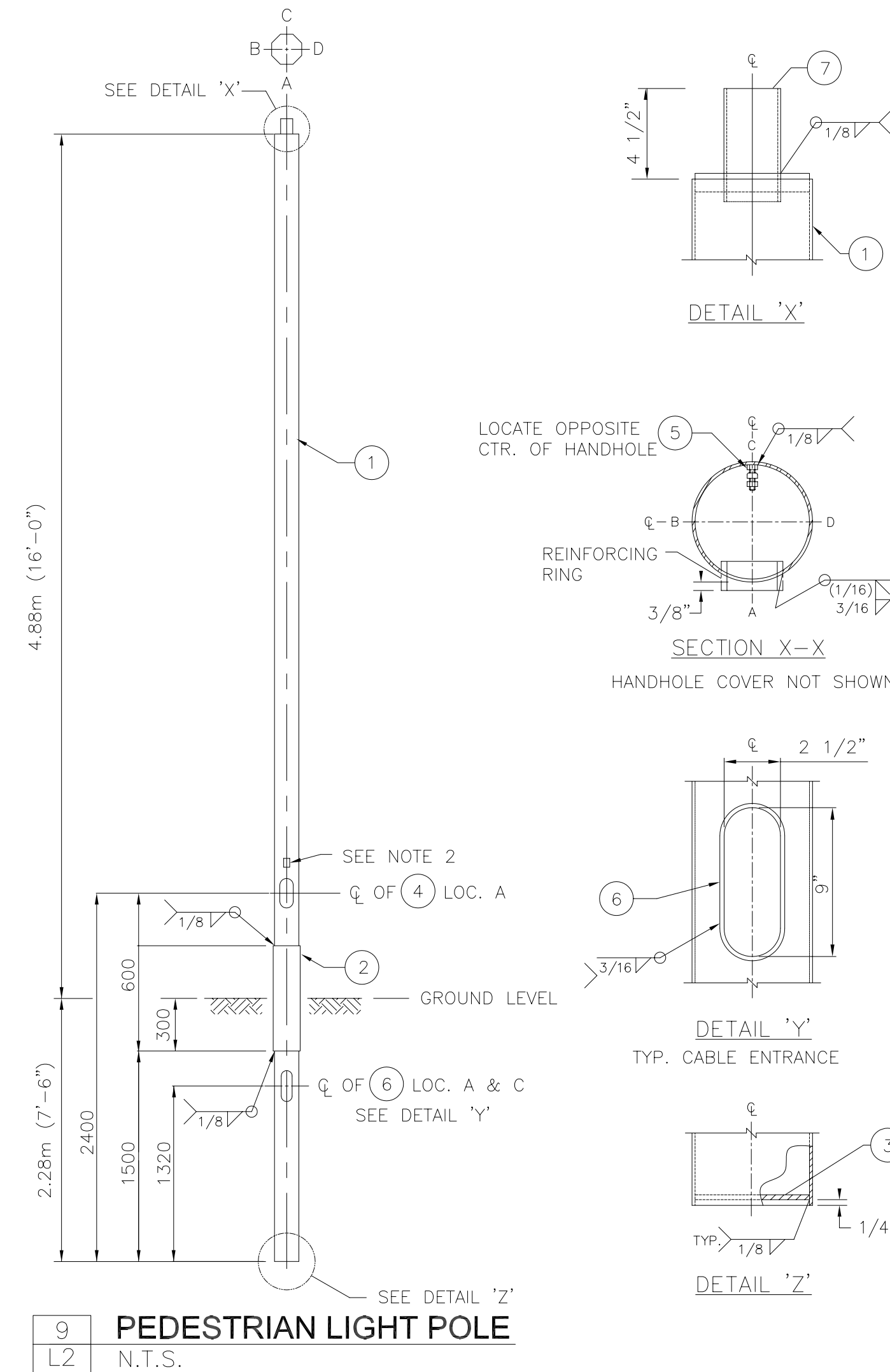
NOTE: CONTRACTOR TO SUPPLY AND INSTALL CONTINUOUS FIBRE-FILLED BITUMINOUS JOINT AROUND ALL FENCE POSTS IN CONCRETE SIDEWALK JOINTS AS PER CITY OF WINNIPEG SPECIFICATIONS.

**8 CONCRETE SIDEWALK**  
L2 N.T.S.



NOTES:  
BENCH - TACHE BENCH (WOOD)  
WASTE RECEPTACLE - CITY OF WINNIPEG METAL SLAT WASTE RECEPTACLE  
REFER TO SPECIFICATIONS  
WHERE BENCH IS LOCATED IN LIMESTONE WALKWAY - WALKWAY TO BE COMPACTED AROUND BASE OF BENCH AS PER WRITTEN SPECIFICATIONS  
FOR ALL PICNIC TABLES IN SOD, SUPPLY AND INSTALL GALVANIZED PIPE STAKE AND CAP WITH PIVOT ANCHORING SYSTEM. REFER TO WRITTEN SPECIFICATION.  
FOR PICNIC TABLE ON CONCRETE SIDEWALK, SUPPLY AND INSTALL SURFACE MOUNTED BOLTED ANCHORING SYSTEM

**10 CONCRETE FOOTING FOR BENCHES AND WASTE RECEPTACLES**  
L2 N.T.S.



POST MOUNTED LUMINAIRE, P.E.C. - SDL VP80-240V-150 S C/W 150W HPS LAMP AND 6 GUARDS. FINISH AS DETERMINED BY LANDSCAPE ARCHITECT.

| ITEM No. | No. REQ'D | DESCRIPTION                              | MATERIAL  | DWG. No. |
|----------|-----------|--|---|----------|
| 1        | 1         | 5" ROUND SHAFT                           | HSS 5" OD.  |          |
| 2        | 1         | 5" INSIDE DIAMETER GROUND SLEEVE         | HSS 5" ID   |          |
| 3        | 1         | BEARING PLATE 2 3/4" x 4 13/16"          | 7GA A570 GR.50                                    |          |
| 4        | 1         | 4 x 7 HANDHOLE C/W COVER                 | C/W 1 1/2" WIDE x 1/4" REINFORCING RING           |          |
| 5        | 1         | GROUND BOLT ASS'Y. 3/8"-16UNC x 1"LG.    | C/W NUT - STEEL PLATED & ALUMINUM TERMINAL WASHER |          |
| 6        | 2         | REINFORCING RING 1" x 21 7/16" DEV. LG.  | 7GA A570 GR. 50                                   |          |
| 7        | 1         | PIPE TENON 2" I.P.S.(2 3/8"O.D.) x 6"LG. | A53 GR.B SCH.40                                   |          |

FINISH: POWDER COAT, COLOR BLACK  
NOTES: 1. ALL WELDING SHALL CONFORM TO C.S.A. STANDARD W59 AND SHALL BE PERFORMED BY WELDERS AND WELDING OPERATORS QUALIFIED UNDER C.S.A. STANDARD W47.1  
2. C.S.A. & IDENTIFICATION STICKER  
3. REFER TO ELECTRICAL PLAN (E1) AND SPECIFICATION FOR FIXTURE SCHEDULE

|             |                               |            |    |
|-------------|-------------------------------|------------|----|
| 2           | ISSUED FOR TENDER             | 26/05/04   | SR |
| 1           | ISSUED FOR DEVELOPMENT PERMIT | 25/05/04   | SR |
| No.         | Revisions                     | Date       | By |
| Date        | Scale                         |            |    |
| 26-05-04    | AS NOTED                      |            |    |
| Designed By | Drawn By                      | Checked By |    |
| JW/SR       | JW                            | SR         |    |



**McGOWAN · RUSSELL**  
Client

CITY OF WINNIPEG  
Project Title  
**BURROWS CENTRAL PARK RENOVATION PROJECTS**

Sheet Title  
**BOYD PARK DETAILS**

Project No. 04-012 Drawing No. L7

