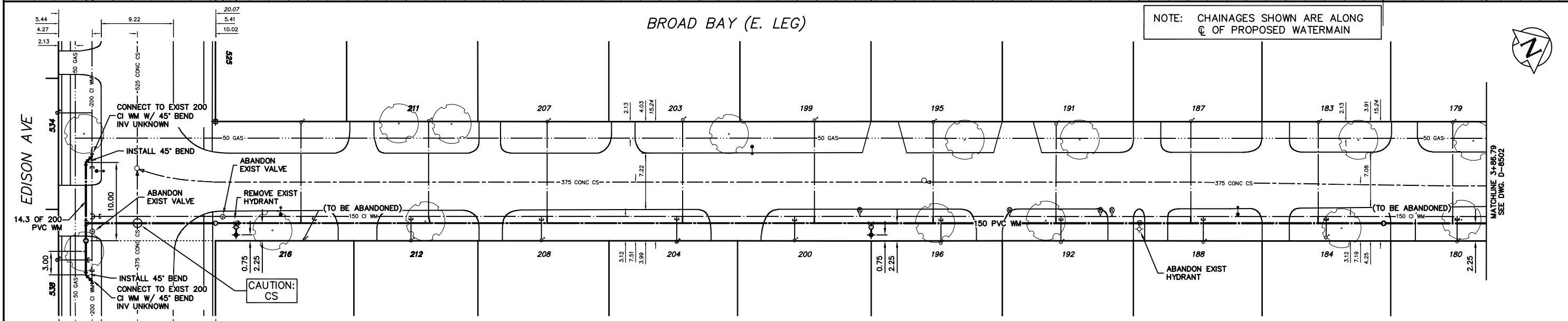


**CONSTRUCTION NOTES**

1. EXPOSE EXISTING WATERMAIN & CONFIRM INVERTS PRIOR TO CONSTRUCTION.
2. LOCATION OF ALL SERVICES TO BE CONFIRMED IN THE FIELD.
3. INSTALL WATERMAIN BY TRENCHLESS METHODS.
4. TRENCHES AND EXCAVATIONS WITHIN 1 METRE OF A PAVED AREA INCLUDING SIDEWALKS SHALL BE CLASS 3 BACKFILL.
5. ALL MATERIALS SHALL CONFORM TO THE CITY OF WINNIPEG STANDARD CONSTRUCTION SPECIFICATIONS.
6. MINIMUM COVER TO TOP OF WATERMAIN SHALL BE 2.4 m.
7. REPLACE ALL EXISTING LEAD SERVICES FROM PROPOSED WATERMAIN TO R.
8. NOTIFY ALL AFFECTED RESIDENTS AND BUSINESSES 24 HOURS IN ADVANCE OF ANY WATER SHUTDOWNS OR DISRUPTION OF SERVICE.



**BROAD BAY (E. LEG)**

NOTE: CHAINAGES SHOWN ARE ALONG  
 ☉ OF PROPOSED WATERMAIN



**WATER SERVICE INFORMATION**

ADDRESS	SIZE(mm) & TYPE (STREET) (PROP)	SIZE(mm) & TYPE (PROP)	SHORT & LONG MEASUREMENT	CORP. LOCATION	REMARKS
179 BROAD BAY	20 COPPER	20	4.57 NS HSE CORN.	-	-
180 BROAD BAY	20 COPPER	20	5.49 NSL	-	-
181 BROAD BAY	20 COPPER	20	8.45 OUT	-	-
183 BROAD BAY	20 COPPER	20	3.81 NS HSE CORN.	-	-
184 BROAD BAY	20 COPPER	20	4.15 NS HSE CORN.	-	-
187 BROAD BAY	20 COPPER	20	4.11 NS HSE CORN.	-	-
188 BROAD BAY	20 COPPER	20	3.26 NS HSE CORN.	-	-
189 BROAD BAY	20 COPPER	20	2.13 N/SHL	-	-
192 BROAD BAY	20 COPPER	20	5.85 NS HSE CORN.	-	-

**WATER SERVICE INFORMATION**

ADDRESS	SIZE(mm) & TYPE (STREET) (PROP)	SIZE(mm) & TYPE (PROP)	SHORT & LONG MEASUREMENT	CORP. LOCATION	REMARKS
195 BROAD BAY	20 COPPER	20	4.42 NSL	OPP S/C	-
196 BROAD BAY	20 COPPER	20	4.88 SNL	-	-
197 BROAD BAY	20 COPPER	20	8.53 OUT	-	-
199 BROAD BAY	20 COPPER	20	6.25 SNL	-	-
200 BROAD BAY	20 COPPER	20	11.58 OUT	-	-
203 BROAD BAY	20 COPPER	20	4.27 NS HSE CORN.	-	-
204 BROAD BAY	20 COPPER	20	5.94 NSL	-	-
207 BROAD BAY	20 COPPER	20	10.82 OUT	-	-
208 BROAD BAY	20 COPPER	20	4.27 SN HSE CORN.	-	-
209 BROAD BAY	20 COPPER	20	6.34 SN HSE CORN.	-	-
208 BROAD BAY	20 COPPER	20	5.03 NSL	-	-
204 BROAD BAY	20 COPPER	20	8.23 OUT	-	-

**WATER SERVICE INFORMATION**

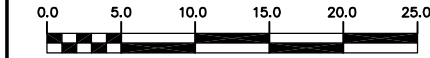
ADDRESS	SIZE(mm) & TYPE (STREET) (PROP)	SIZE(mm) & TYPE (PROP)	SHORT & LONG MEASUREMENT	CORP. LOCATION	REMARKS
211 BROAD BAY	20 COPPER	20	4.57 SN HSE CORN.	-	-
212 BROAD BAY	20 COPPER	20	4.21 NS HSE CORN.	-	-
216 BROAD BAY	20 COPPER	20	2.74 SN HSE CORN.	-	-
525 EDISON AVE	20 COPPER	20	3.05 WE HSE CORN.	SERV. OFF EDISON	-
534 EDISON AVE	20 COPPER	20	8.56 S OF HSE FRNT.	SERV. OFF EDISON	-
538 EDISON AVE	20 COPPER	20	7.93 NR OF HSE FRNT.	SERV. OFF EDISON	-
538 EDISON AVE	20 COPPER	20	3.05 EW HSE CORN.	SERV. OFF EDISON	-
538 EDISON AVE	20 COPPER	20	8.69 NR OF HSE FRNT.	-	-

**METRIC**

WHOLE NUMBERS INDICATE MILLIMETRES  
 DECIMALIZED NUMBERS INDICATE METRES

**WARNING**

IF POWER EQUIPMENT OR EXPLOSIVES ARE TO BE USED FOR EXCAVATION ON THIS PROJECT THE CONTRACTOR MUST:  
 1) NOTIFY THE GAS COMPANY OF THE PROPOSED LOCATION OF EXCAVATION.  
 2) TAKE PRECAUTION TO AVOID DAMAGE TO GAS COMPANY INSTALLATIONS.  
 SEE PROVINCIAL REGULATION 210/72 FOR DETAILS



EXISTING	LEGEND-PLAN	PROPOSED	EXISTING	LEGEND-PLAN	PROPOSED	EXISTING	LEGEND-PROFILE	PROPOSED
200 WM	WATERMAIN	200 WM	SL, HYDRO	MTS	150 WM	WATERMAIN	150 WM	
525 LDS	LAND DRAINAGE SEWER	525 LDS	TRAFFIC SIGNALS	TRAFFIC SIGNALS	50 GAS	300 LDS	LAND DRAINAGE SEWER	300 LDS
375 WWS	WASTEWATER SEWER	375 WWS	SURVEY BAR	SURVEY BAR	250 WWS	250 WWS	WASTEWATER SEWER	250 WWS
○	MANHOLE	●	FENCE	FENCE	⊖	⊖	PROFILE	⊖
□	CATCH BASIN	■	POLE - HYDRO, MTS	POLE - HYDRO, MTS	⊕	⊕	GROUND ABOVE PIPE	⊕
▽	CURB INLET	▽	CURB STOP	CURB STOP	⊙	⊙		⊙
△	REDUCER	△	GUY ANCHOR	GUY ANCHOR	⊙	⊙		⊙
X	COUPLING	X	LIGHT STANDARD	LIGHT STANDARD	⊙	⊙		⊙
⊕	ANODE	⊕	TREE	TREE	⊕	⊕		⊕

LOCATION APPROVED	DATE
UNDERGROUND STRUCTURES	
SUPV. U/G STRUCTURES COMMITTEE	
NOTE:	
LOCATION OF UNDERGROUND STRUCTURES AS SHOWN ARE BASED ON THE BEST INFORMATION AVAILABLE BUT NO GUARANTEE IS GIVEN THAT ALL EXISTING UTILITIES ARE SHOWN OR THAT THE GIVEN LOCATIONS ARE EXACT. CONFIRMATION OF EXISTENCE AND EXACT LOCATION OF ALL SERVICES MUST BE OBTAINED FROM THE INDIVIDUAL UTILITIES BEFORE PROCEEDING WITH CONSTRUCTION.	

DESIGNED BY	CHECKED BY
NC	TW
DRAWN BY	APPROVED BY
CJH	KZ
HOR. SCALE	VERTICAL
1:250	1:50
DATE	DATE
2004 06 11	

ENGINEER'S SEAL  
 ORIGINAL SIGNED BY K.R. ZUREK  
 04/06/14

**THE CITY OF WINNIPEG**  
 WATER AND WASTE DEPARTMENT

2004 WATERMAIN RENEWALS

**BROAD BAY (E. LEG)**  
 EDISON AVENUE TO  
 162.5 m N OF EDISON AVENUE

SHEET 3 OF 11  
 CITY DRAWING NUMBER D-8503

BID OPPORTUNITY: 247-2004  
 FILENAME: D-8501\_18503.dwg  
 PLOT DATE: 2004 06 14