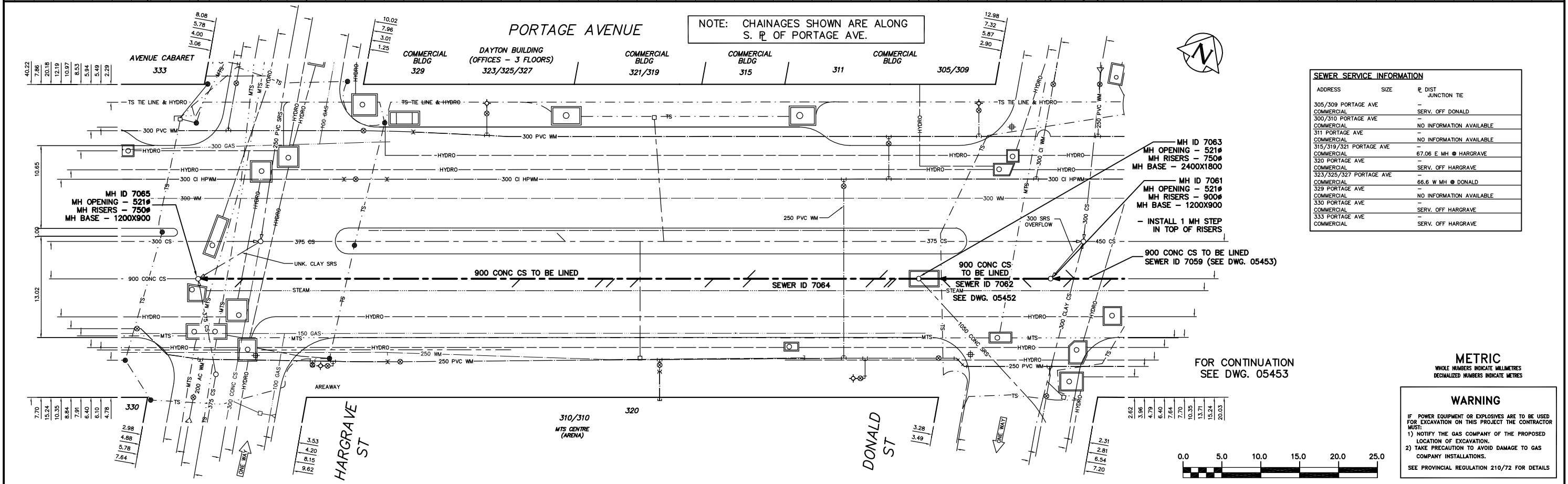


SEWER JUNCTION INFORMATION *			
SEWER ID 7064			
DISTANCE FROM MH ID 7063			
2.90	W	150#	SOUTH CN
3.40	W	150#	SOUTH CN
5.10	W	200#	NORTH CN
5.70	W	150#	SOUTH CN
21.50	W	150#	SOUTH CN
22.10	W	200#	NORTH CN
26.40	W	150#	SOUTH CN
36.00	W	150#	SOUTH CN
39.10	W	200#	SOUTH CN
40.50	W	150#	SOUTH CN
51.20	W	150#	SOUTH CN
66.80	W	150#	SOUTH CN

SEWER JUNCTION INFORMATION *			
SEWER ID 7062			
DISTANCE FROM MH ID 7061			
3.60	W	200#	SOUTH CN
14.00	W	200#	SOUTH CN



SEWER SERVICE INFORMATION			
ADDRESS	SIZE	R DIST	JUNCTION TIE
305/309 PORTAGE AVE	-	-	SERV. OFF DONALD
COMMERCIAL 300/310 PORTAGE AVE	-	-	NO INFORMATION AVAILABLE
COMMERCIAL 311 PORTAGE AVE	-	-	NO INFORMATION AVAILABLE
COMMERCIAL 315/319/321 PORTAGE AVE	-	-	NO INFORMATION AVAILABLE
COMMERCIAL 320 PORTAGE AVE	-	-	67.06 E MH @ HARGRAVE
COMMERCIAL 323/325/327 PORTAGE AVE	-	-	SERV. OFF HARGRAVE
COMMERCIAL 329 PORTAGE AVE	-	-	66.6 W MH @ DONALD
COMMERCIAL 330 PORTAGE AVE	-	-	NO INFORMATION AVAILABLE
COMMERCIAL 333 PORTAGE AVE	-	-	SERV. OFF HARGRAVE
COMMERCIAL 333 PORTAGE AVE	-	-	SERV. OFF HARGRAVE

METRIC
WHOLE NUMBERS INDICATE MILLIMETRES
DECIMALIZED NUMBERS INDICATE METRES

WARNING
IF POWER EQUIPMENT OR EXPLOSIVES ARE TO BE USED FOR EXCAVATION ON THIS PROJECT THE CONTRACTOR MUST:
1) NOTIFY THE GAS COMPANY OF THE PROPOSED LOCATION OF EXCAVATION.
2) TAKE PRECAUTION TO AVOID DAMAGE TO GAS COMPANY INSTALLATIONS.
SEE PROVINCIAL REGULATION 210/72 FOR DETAILS

200 WM	WATERMAIN	200 WM	SL, HYDRO	150 WM	WATERMAIN	150 WM
+	HYDRANT	+	MTS	+	HYDRANT	+
+	VALVE	+	TRAFFIC SIGNALS	+	VALVE	+
525 LDS	LAND DRAINAGE SEWER	525 LDS	GAS	300 LDS	LAND DRAINAGE SEWER	300 LDS
375 WWS	WASTEWATER SEWER	375 WWS	SURVEY BAR	250 WWS	WASTEWATER SEWER	250 WWS
○	MANHOLE	○	FENCE	○	PROFILE	○
□	CATCH BASIN	□	POLE - HYDRO, MTS	□	GROUND ABOVE PIPE	□
▽	CURB INLET	▽	CURB STOP	▽		▽
+	JUNCTIONS	+	GUY ANCHOR	+		+
+	CULVERT	+	LIGHT STANDARD	+		+
+	ANODE	+	TREE	+		+
EXISTING	LEGEND-PLAN	PROPOSED	EXISTING	LEGEND-PLAN	PROPOSED	EXISTING
EXISTING	LEGEND-PROFILE	PROPOSED	EXISTING	LEGEND-PROFILE	PROPOSED	EXISTING

<p>LOCATION APPROVED UNDERGROUND STRUCTURES</p> <p>SUPV. U/G STRUCTURES COMMITTEE DATE</p> <p>NOTE: LOCATION OF UNDERGROUND STRUCTURES AS SHOWN ARE BASED ON THE BEST INFORMATION AVAILABLE BUT NO GUARANTEE IS GIVEN THAT ALL EXISTING UTILITIES ARE SHOWN OR THAT THE GIVEN LOCATIONS ARE EXACT. CONFIRMATION OF EXISTENCE AND EXACT LOCATION OF ALL SERVICES MUST BE OBTAINED FROM THE INDIVIDUAL UTILITIES BEFORE PROCEEDING WITH CONSTRUCTION.</p>	<p>B.M. ELEV.</p> <p>FIELD BOOK #</p> <p>POSTED TO LBS</p> <p>NO. REVISIONS</p> <p>DATE BY</p>	<p>CITY OF WINNIPEG WATER AND WASTE ENGINEERING DIVISION</p> <p>DESIGNED BY TW</p> <p>CHECKED BY KZ</p> <p>DRAWN BY CJH</p> <p>APPROVED BY KZ</p> <p>HOR. SCALE 1:250</p> <p>VERTICAL 1:50</p> <p>DATE 2004.05.28</p> <p>RELEASED FOR CONSTRUCTION</p>	<p>ENGINEER'S SEAL</p> <p>ORIGINAL SIGNED BY K.R. ZUREK 04/05/28</p> <p>BID OPPORTUNITY: 242-2004</p> <p>FILENAME: 05452_05453.dwg</p> <p>PLOT DATE: 2004.05.28</p>	<p>THE CITY OF WINNIPEG WATER AND WASTE DEPARTMENT</p> <p>2004 COMBINED SEWER RENEWALS BY CIPP LINING</p> <p>PORTAGE AVENUE MH W OF W R DONALD STREET TO MH ON W R HARGRAVE STREET</p>	<p>SHEET 11 OF 13</p> <p>CITY DRAWING NUMBER</p> <p>05452</p>
---	--	---	---	--	--