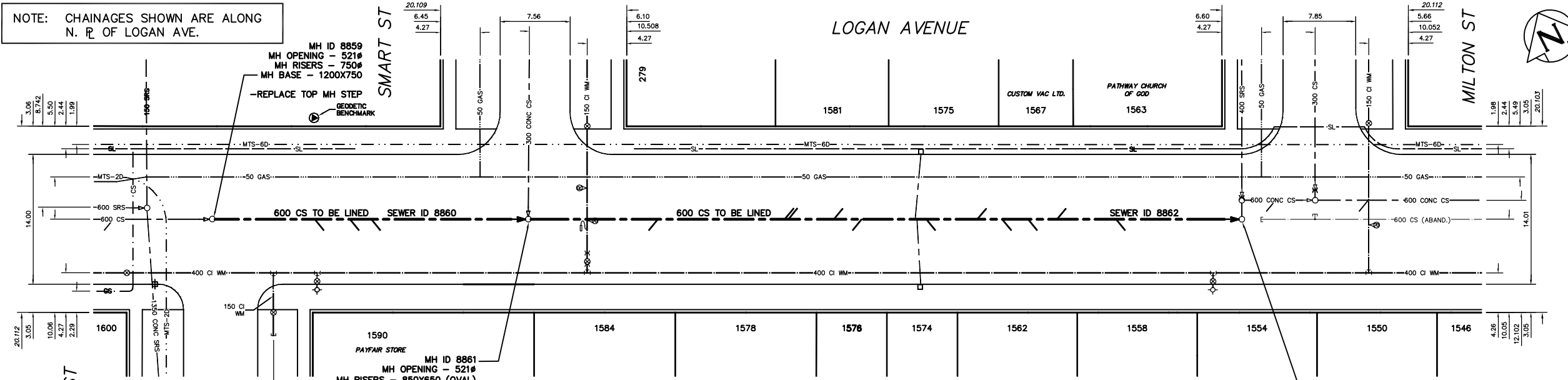


NOTE: CHAINAGES SHOWN ARE ALONG N. R. OF LOGAN AVE.



SEWER JUNCTION INFORMATION * SEWER ID 8860					
DISTANCE FROM MH ID 8859					
11.10	E	100#	SOUTH	CN	
14.80	E	150#	SOUTH	JN	
17.20	E	150#	SOUTH	JN	
SEWER JUNCTION INFORMATION * SEWER ID 8862					
DISTANCE FROM MH ID 8861					
14.00	E	150#	SOUTH	JN	
27.70	E	150#	NORTH	JN	
28.10	E	150#	TOP	JN	
33.00	E	150#	TOP	CN	
36.00	E	150#	SOUTH	CN	
41.80	E	150#	NORTH	JN	
42.00	E	150#	SOUTH	JN	
43.00	E	150#	SOUTH	JN	
48.50	E	150#	NORTH	JN	
51.20	E	150#	SOUTH	JN	
54.00	E	150#	SOUTH	JN	
57.10	E	150#	NORTH	JN	
63.50	E	150#	SOUTH	JN	

* INFORMATION FROM SEWER VIDEO INSPECTION

SEWER SERVICE INFORMATION			
ADDRESS	SIZE	R DIST	JUNCTION TIE
1546 LOGAN AVE	60.96 W MH	0	BLAKE
1550 LOGAN AVE	78.20 W MH	0	BLAKE
1554 LOGAN AVE	4.27 W MH	0	MILTON
1558 LOGAN AVE	20.42 W MH	0	MILTON
1562 LOGAN AVE	26.57 W MH	0	MILTON
1563 LOGAN AVE	22.63 W MH	0	MILTON
1567 LOGAN AVE	26.82 W MH	0	MILTON
1574 LOGAN AVE	39.62 W MH	0	MILTON

SEWER SERVICE INFORMATION			
ADDRESS	SIZE	R DIST	JUNCTION TIE
1575 LOGAN AVE			NO INFORMATION AVAILABLE
1576 LOGAN AVE			SEWER SERV. CUT-OFF
1578 LOGAN AVE			NO INFORMATION AVAILABLE
1581 LOGAN AVE	50.90 W MH	0	MILTON
1584 LOGAN AVE	70.10 W MH	0	MILTON
1590 LOGAN AVE	15.85 W MH	0	SMART
1600 LOGAN AVE	10.67 W MH	0	WORTH
279 SMART ST	18.90 N MH	0	LOGAN

MH ID 8863
MH OPENING - 521#
MH RISERS - 900# (EXCEPT TOP 0.80 IS 750#)
MH BASE - 1300#
- REPLACE TOP MH STEP



METRIC
WHOLE NUMBERS INDICATE MILLIMETRES
DECIMALIZED NUMBERS INDICATE METRES

WARNING
IF POWER EQUIPMENT OR EXPLOSIVES ARE TO BE USED FOR EXCAVATION ON THIS PROJECT THE CONTRACTOR
1) NOTIFY THE GAS COMPANY OF THE PROPOSED LOCATION OF EXCAVATION.
2) TAKE PRECAUTION TO AVOID DAMAGE TO GAS COMPANY INSTALLATIONS.
SEE PROVINCIAL REGULATION 210/72 FOR DETAILS

200 WM	WATERMAIN	200 WM	SL, HYDRO	150 WM	WATERMAIN	150 WM
+	HYDRANT	+	MTS	+	HYDRANT	+
+	VALVE	+	TRAFFIC SIGNALS	+	VALVE	+
525 LDS	LAND DRAINAGE SEWER	525 LDS	GAS	300 LOS	LAND DRAINAGE SEWER	300 LDS
375 WWS	WASTEWATER SEWER	375 WWS	SURVEY BAR	250 WWS	WASTEWATER SEWER	250 WWS
○	MANHOLE	○	FENCE	○	PROFILE	○
□	CATCH BASIN	□	POLE - HYDRO, MTS	□	GROUND ABOVE PIPE	□
▽	CURB INLET	▽	CURB STOP	▽		▽
+	JUNCTIONS	+	GUY ANCHOR	+		+
+	CULVERT	+	LIGHT STANDARD	+		+
+	ANODE	+	TREE	+		+
EXISTING	LEGEND-PLAN	PROPOSED	EXISTING	LEGEND-PLAN	PROPOSED	EXISTING
EXISTING	LEGEND-PROFILE	PROPOSED	EXISTING	LEGEND-PROFILE	PROPOSED	EXISTING

LOCATION APPROVED
UNDERGROUND STRUCTURES

SUPV. U/G STRUCTURES COMMITTEE DATE

NOTE:
LOCATION OF UNDERGROUND STRUCTURES AS SHOWN ARE BASED ON THE BEST INFORMATION AVAILABLE BUT NO GUARANTEE IS GIVEN THAT ALL EXISTING UTILITIES ARE SHOWN OR THAT THE GIVEN LOCATIONS ARE EXACT. CONFIRMATION OF EXISTENCE AND EXACT LOCATION OF ALL SERVICES MUST BE OBTAINED FROM THE INDIVIDUAL UTILITIES BEFORE PROCEEDING WITH CONSTRUCTION.

CITY OF WINNIPEG
WATER AND WASTE
ENGINEERING DIVISION

DESIGNED BY TW
CHECKED BY KZ

DRAWN BY CJH
APPROVED BY KZ

HOR. SCALE 1:250
VERTICAL 1:50

RELEASED FOR CONSTRUCTION
DATE 2004.05.28

ENGINEER'S SEAL
ORIGINAL SIGNED BY K.R. ZUREK
04/05/28

BID OPPORTUNITY: 242-2004
FILENAME: 05450.dwg
PLOT DATE: 2004 05 28

THE CITY OF WINNIPEG
WATER AND WASTE DEPARTMENT

2004 COMBINED SEWER RENEWALS
BY CIPP LINING
LOGAN AVENUE
MH AT WORTH STREET TO
MH AT MILTON STREET

SHEET 9 OF 13
CITY DRAWING NUMBER
05450