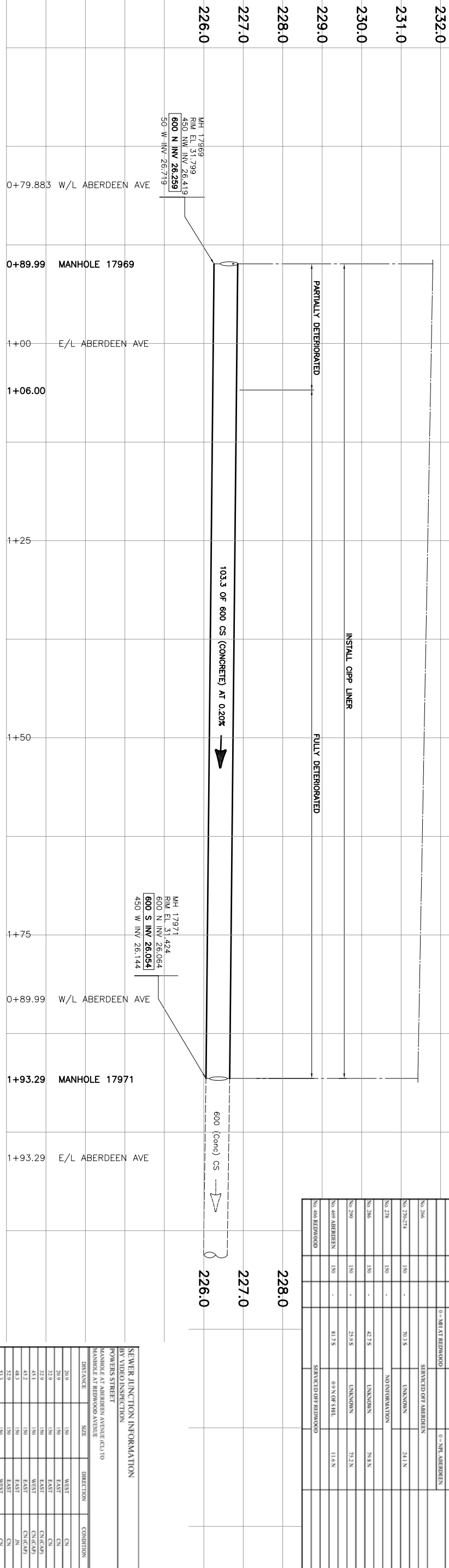


ADDRESS	SIZE	PL.	JUNCTION TIE	PROPERTY LINE TIE	REMARKS
0+01.1 AT REDWOOD	150	INV		0+01.1 AT REDWOOD	
				0+01.1 AT ABERDEEN	
	150		70.1 S	UNKNOWN	SERVICED OFF ABERDEEN
	150		70.1 S	24.1 N	UNKNOWN
	150		70.1 S	24.1 N	UNKNOWN
	150		42.7 S	79.8 N	UNKNOWN
	150		23.9 S	75.2 N	UNKNOWN
	150		81.7 S	11.6 N	UNKNOWN
	150		81.7 S	11.6 N	SERVICED OFF REDWOOD



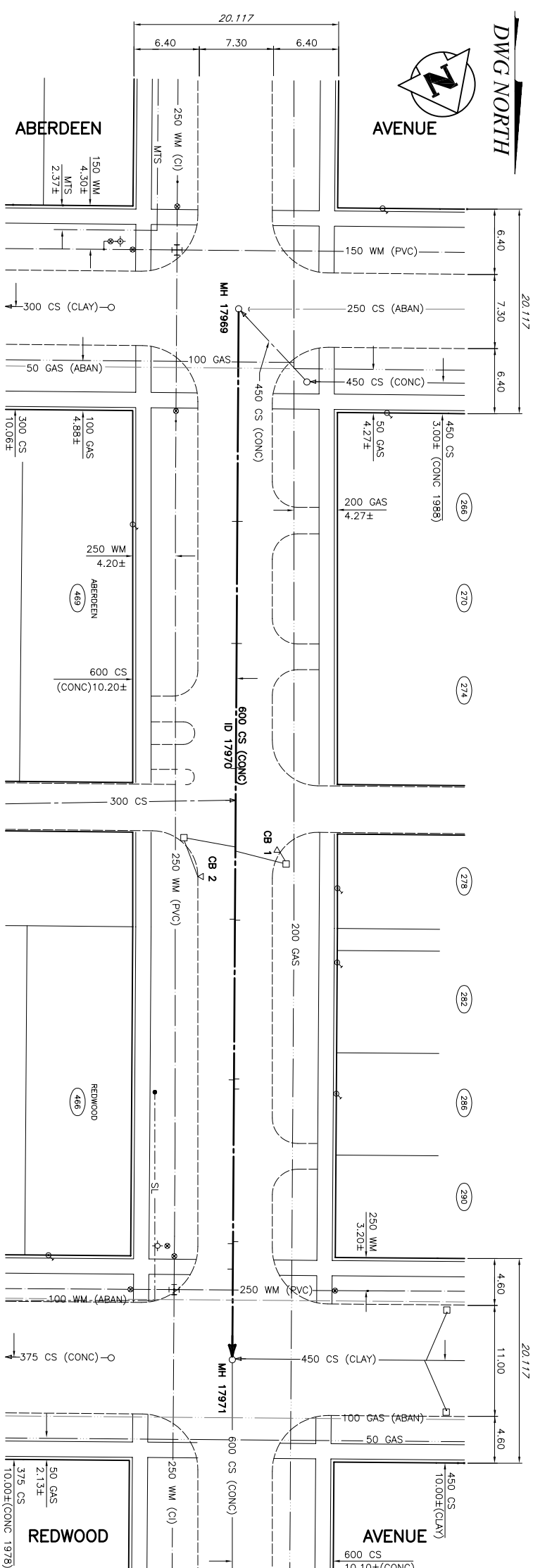
PARTIALLY DETERIORATED
FULLY DETERIORATED

INSTALL CIPP LINER

103.3 OF 600 CS (CONCRETE) AT 0.20%

MANHOLE 17969
MANHOLE 17971

226.0
227.0
228.0
229.0
230.0
231.0
232.0
233.0



DWG NORTH

ABERDEEN AVENUE

REDWOOD AVENUE

DISTANCE	SIZE	DIRECTION	CONDITION
26.9	150	WEST	CN
26.9	150	EAST	CN
32.9	150	EAST	CN
32.9	150	EAST	EN(C/D)*
32.9	150	EAST	EN(C/D)*
41.9	150	WEST	EN(C/D)*
41.9	150	WEST	EN(C/D)*
48.9	150	EAST	EN(C/D)*
52.9	150	EAST	EN(C/D)*
52.9	150	WEST	EN(C/D)*
52.9	150	WEST	EN(C/D)*
66.0	150	WEST	EN(C/D)*
66.0	150	WEST	EN(C/D)*
75.7	150	EAST	EN(C/D)*
75.7	150	EAST	EN(C/D)*
76.7	150	WEST	EN(C/D)*
91.7	150	WEST	EN(C/D)*
91.7	150	WEST	EN(C/D)*
103.9	250	WEST	EN(C/D)*
103.9	250	WEST	EN(C/D)*

MANHOLE NUMBER	MANHOLE TYPE	ADDITIONAL INFORMATION
17969	CONCRETE	GROUT MH BASE, REPLACE BENCHING, GROUT TOP 1.0, INSTALL 1 RUNG.
17971	CONCRETE	GROUT & REPLACE BENCHING, GROUT TOP 1.0, REPLACE FRAME & COVER

CATCHBASIN NUMBER	ADDITIONAL INFORMATION
CB 1	REPLACE TOP 0.6 RISER, INSTALL HOOD.
CB 2	REPLACE TOP 0.9m RISER, INSTALL 4 RUNGS.
*CB 3	INSTALL HOOD.

CATCHBASIN INFORMATION

NOTE:
CHANGE IS ALONG EAST PROPERTY LINE OF POWERS STREET.

* IN PUBLIC LANE AT No. 456 REDWOOD

<p>1:250</p> <p>0 5 10m</p> <p>Winnipeg WATER AND WASTE DEPARTMENT</p> <p>THE CITY OF WINNIPEG FULL LENGTH LINING BY CIPP METHODS</p> <p>POWERS STREET MANHOLE AT ABERDEEN AVENUE (CL) TO MANHOLE AT REDWOOD AVENUE</p> <p>CITY DRAWING NUMBER 05428 SHEET 1 OF 6 C2001</p>		<p>MANHOLE 17969 RM EL. 31.799 450 N INV. 26.419 600 N INV. 26.259 50 W INV. 26.719</p> <p>MANHOLE 17971 RM EL. 31.424 600 N INV. 26.064 600 S INV. 26.054 450 W INV. 26.144</p>
<p>POWERS STREET</p>		
<p>APPEGN</p> <p>Certificate of Authorization Wardrop Engineering Inc. No. 195 Expiry: April 30, 2005</p>		<p>DATE: 04.05.28 BY: HAK</p>
<p>Winnipeg Engineering Inc.</p> <p>REGISTERED PROFESSIONAL ENGINEER</p> <p>H.A. KATZ</p> <p>CONSULTANT DRAWING NO. 0400120200-DWG-C2001</p>		
<p>WARDROP Engineering Inc.</p> <p>DESIGNED BY: TY DRAWN BY: GMD HORIZ. SCALE: 1 : 250 VERTICAL: 1 : 50 DATE: 04.05.07</p> <p>RELEASER FOR CONSTRUCTION: HAK</p>		
<p>LOCATION APPROVED UNDERGROUND STRUCTURES</p> <p>DATE: 04.05.28</p>		
<p>LEGAL DIMENSION SURVEY BAR</p> <p>DATE: 04.05.28</p>		
<p>TRAFFIC SIGNAL</p> <p>DATE: 04.05.28</p>		
<p>HYDRO</p> <p>DATE: 04.05.28</p>		
<p>SIDEWALK</p> <p>DATE: 04.05.28</p>		
<p>CURB</p> <p>DATE: 04.05.28</p>		