

D SIZE 22" x 34" (559mm x 864mm)

EXISTING FEATURES

232.0
231.0
230.0
229.0
228.0
227.0
226.0
225.0
224.0
224.0
223.0

232.0
231.0
230.0
229.0
228.0
227.0
226.0
225.0
224.0
224.0
223.0

89.3 OF 900 CONC CS (#227) (MH to MH)
88.4 OF 900 CONC CS (#228) at 0.09% TO BE LINED - PARTIALLY DETERIORATED
80.1 OF 900 CONC CS (#16459) (MH to MH)

RIM EL 31.18
7500 x 3070 RISER
900 W INV 24.860
900 E INV 24.840

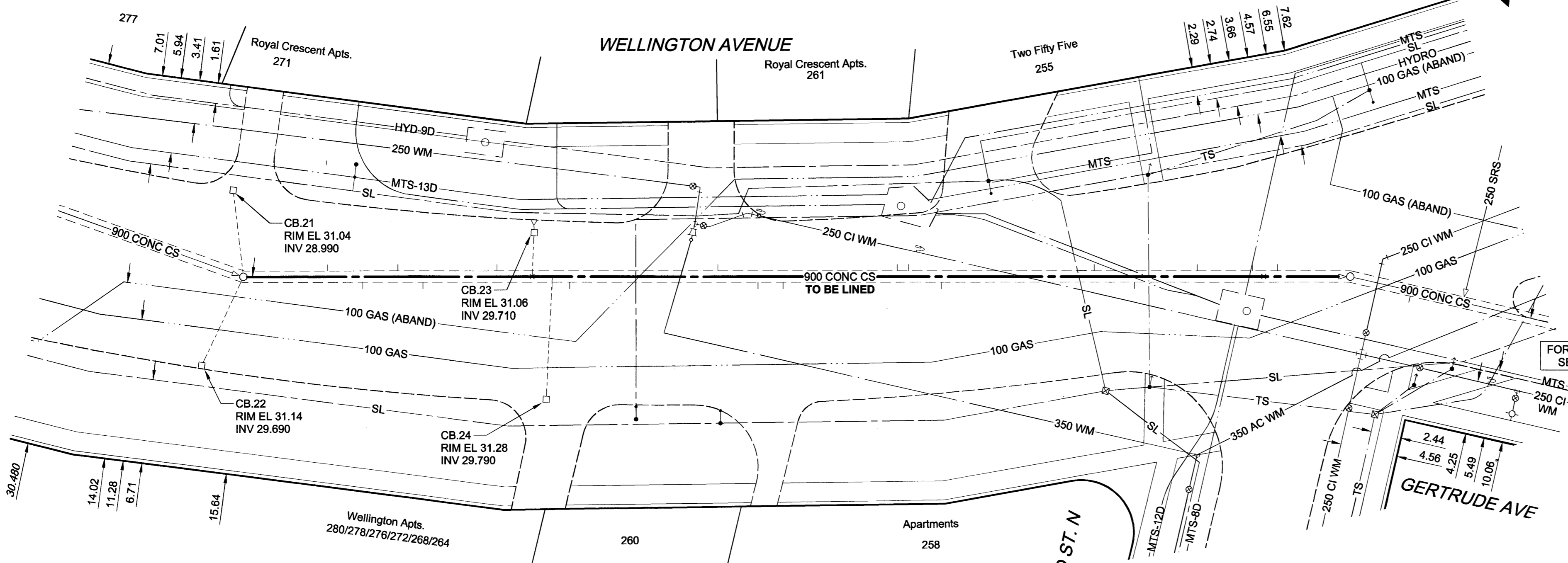
RIM EL 31.50
7500 x 3650 RISER
300 S INV 25.170
900 W INV 24.760
900 E INV 24.710

CHAINAGE ALONG S E

1+100

1+56.988-WPL HUGO (EXT)

1+70.989 E PL HUGO (EXT)



SEWER JUNCTION INFORMATION*

REF. MH	DIST FROM	SIZE	CLOCK AT
340	6.70	1500	11
340	9.50	1500	01
340	12.30	1500	10
340	14.30	1500	01
340	20.20	1500	11
340	23.00	1500	12
340	24.60	1500	01
340	26.00	1500	01
340	37.80	1500	11
340	41.00	1500	01
340	43.00	1500	02
340	52.10	1500	11
340	53.00	1250	11
340	55.60	1500	01
340	67.80	1500	11
340	71.00	1500	01
340	76.00	1500	10
340	80.40	1500	11
340	81.30	2000	12
340	82.40	1500	11

*JUNCTION LOCATION FROM VIDEO INSPECTION

FOR FURTHER INFO SEE DWG 05455

WARNING
IF POWER EQUIPMENT OR EXPLOSIVES ARE TO BE USED FOR EXCAVATION ON THIS PROJECT, THE CONTRACTOR MUST:
1) NOTIFY THE GAS COMPANY OF THE PROPOSED LOCATION OF EXCAVATION.
2) TAKE PRECAUTION TO AVOID DAMAGE TO GAS COMPANY INSTALLATIONS.
SEE PROVINCIAL REGULATION 140/92 FOR DETAILS

150 mm WM	WATERMAIN	150 mm WM	150 mm WM	WATERMAIN	150 mm WM	WATERMAIN	150 mm WM	WATERMAIN	150 mm WM
⊕	HYDRANT	⊕	⊕	REDUCER	⊕	⊕	⊕	LAND DRAINAGE SEWER	⊕
⊗	VALVE	⊗	⊗	COUPLING	⊗	⊗	⊗	WASTE WATER SEWER	⊗
⊙	LAND DRAINAGE SEWER	⊙	⊙	HYDRO	⊙	⊙	⊙	PAVEMENT CROWN	⊙
⊚	WASTE WATER SEWER	⊚	⊚	MTS	⊚	⊚	⊚	GROUNDLINE	⊚
○	MANHOLE	○	○	GAS	○	○	○		
□	CATCH BASIN	□	□	ASPHALT	□	□	□		
△	CURB INLET	△	△	CONCRETE	△	△	△		
▭	CULVERT	▭	▭	LIP CURB	▭	▭	▭		
⊕	COMMUNITY MAILBOX	⊕	⊕	MODIFIED BARRIER CURB	⊕	⊕	⊕		
⊕	SURVEY BAR	⊕	⊕	RAMP CURB	⊕	⊕	⊕		
⊕	EXISTING	NEW	EXISTING	LEGEND - PLAN	NEW	EXISTING	LEGEND - PROFILE	NEW	

LOCATION APPROVED
UNDERGROUND STRUCTURES
SUPR. U/G STRUCTURES DATE COMMITTEE
NOTE: LOCATION OF UNDERGROUND STRUCTURES AS SHOWN ARE BASED ON THE BEST INFORMATION AVAILABLE. BUT NO GUARANTEE IS GIVEN THAT ALL EXISTING UTILITIES ARE SHOWN OR THAT THE GIVEN LOCATIONS ARE EXACT. CONFIRMATION OF EXISTENCE AND EXACT LOCATION OF ALL SERVICES MUST BE OBTAINED FROM THE INDIVIDUAL UTILITIES BEFORE PROCEEDING WITH CONSTRUCTION.

BM	XX.XXX	ELEV	000.000m
0	ISSUED FOR CONSTRUCTION	04/05/31	ADL
NO.	REVISIONS	YYMMDD	BY

METRIC
WHOLE NUMBERS INDICATE MILLIMETRES
DECIMALIZED NUMBERS INDICATE METRES

UMA
www.umagroup.com
2004 UMA ENGINEERING LTD. ALL RIGHTS RESERVED.

DESIGNED BY: ALD
CHECKED BY: [Signature]
DRAWN BY: ADL
APPROVED BY: [Signature]
HOR. SCALE: 1:250
VERT. SCALE: 1:50
RELEASED FOR CONSTRUCTION: [Signature]
DATE: [Signature]

APEGM
Certificate of Authorization
UMA Engineering Ltd.
No. 256 Expiry: April 30, 2005

PROFESSIONAL'S SEAL
PROVINCE OF MANITOBA
28 MAY 04
C. C. MACEY
REGISTERED ENGINEER
CONSULTANT DRAWING NO. 08
D265-107-01

THE CITY OF WINNIPEG
WATER AND WASTE DEPARTMENT

2004 COMBINED SEWER RENEWALS
CONTRACT 12
SEWER LINING

WELLINGTON AVENUE
66m E OF COCKBURN STREET
TO HUGO STREET NORTH

SHEET 08 OF 08
CITY DRAWING NUMBER
05462
REV 0

BID OPPORTUNITY NO. 240-2004

UMA FILE NAME: D265-107-01_12-C-1008_RX.DWG 2004-05-28 10:08am ADL