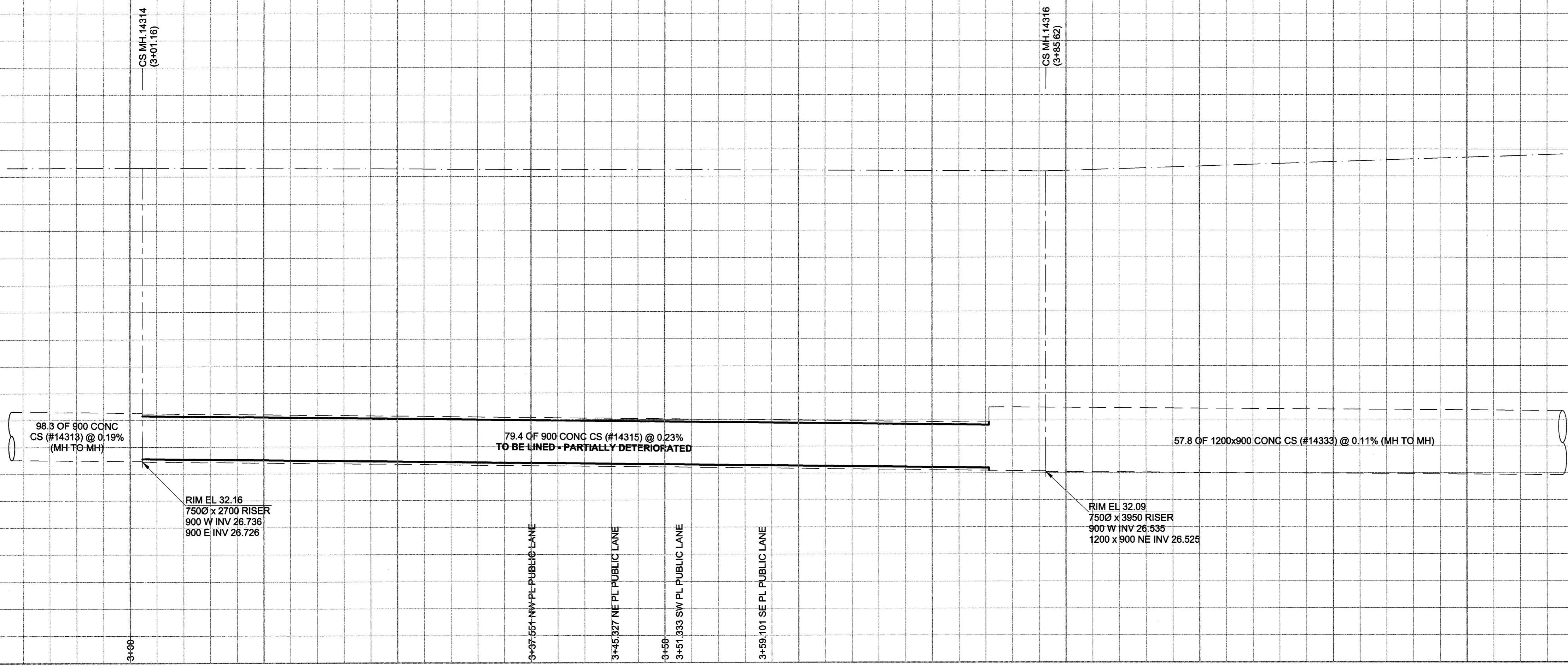


D SIZE 22" x 34" (559mm x 864mm)

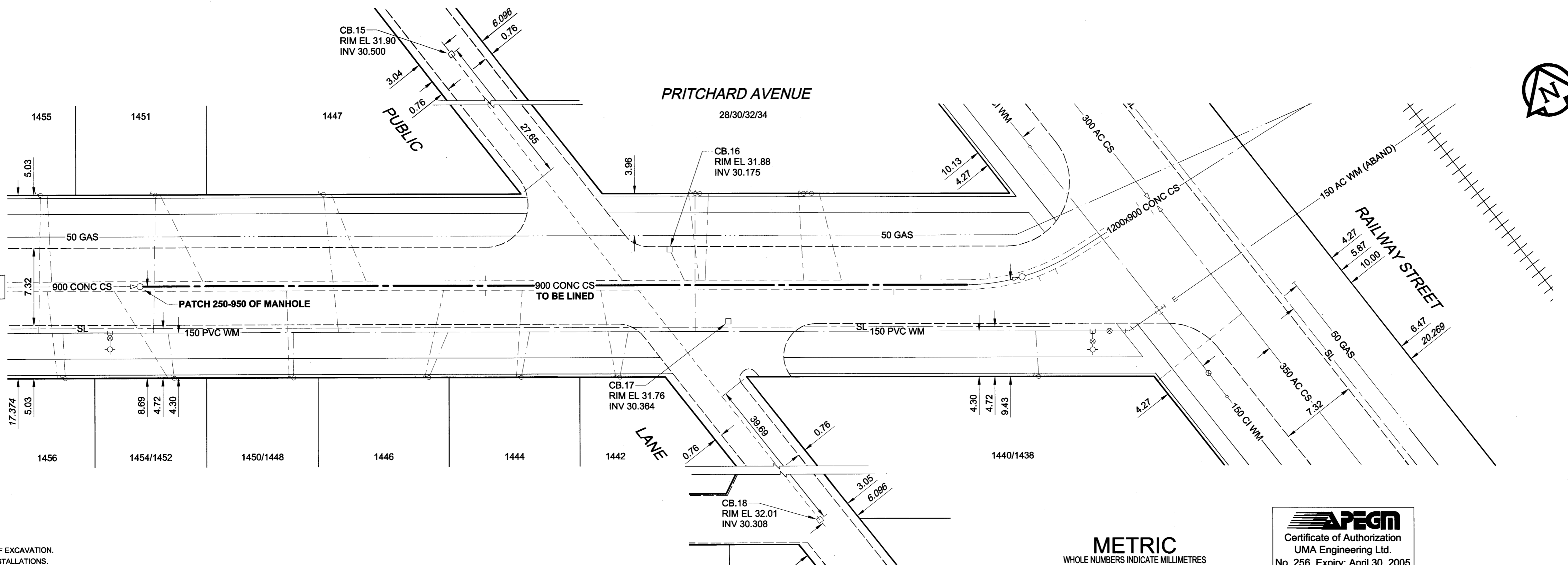
EXISTING FEATURES

234.0  
233.0  
232.0  
231.0  
230.0  
229.0  
228.0  
227.0  
226.0  
225.0

234.0  
233.0  
232.0  
231.0  
230.0  
229.0  
228.0  
227.0  
226.0  
225.0



CHAINAGE  
ALONG S.E.  
LEO NOVAK  
1+00.000 = SW



**SEWER JUNCTION INFORMATION\***

REF. MH DIST FROM SIZE CLOCK AT

REF. MH	DIST	SIZE	CLOCK AT
14314	6.00	1500	11
14314	14.00	1500	01
14314	21.60	1500	11
14314	29.00	1500	01
14314	33.00	2000	11
14314	33.00	2000	01
14314	36.50	1500	01
14314	37.00	1500	11
14314	44.00	2000	01
14314	46.10	2000	11
14314	47.60	2000	01
14314	52.00	1500	11
14314	53.40	1500	11
14314	54.00	1500	10
14314	63.40	1500	11
14314	67.00	1500	11
14314	72.00	1500	01
14314	74.60	1500	11
14314	81.20	1500	11

\*JUNCTION LOCATION FROM VIDEO INSPECTION

**WARNING**  
IF POWER EQUIPMENT OR EXPLOSIVES ARE TO BE USED FOR EXCAVATION ON THIS PROJECT, THE CONTRACTOR MUST:  
1) NOTIFY THE GAS COMPANY OF THE PROPOSED LOCATION OF EXCAVATION.  
2) TAKE PRECAUTION TO AVOID DAMAGE TO GAS COMPANY INSTALLATIONS.  
SEE PROVINCIAL REGULATION 140/92 FOR DETAILS

150 mm WM	WATERMAIN	150 mm WM	CURB STOP	150 mm WM	WATERMAIN	150 mm WM	LOCATION APPROVED
○	HYDRANT	●	REDUCER	○	LAND DRAINAGE SEWER	○	UNDERGROUND STRUCTURES
⊗	VALVE	⊗	COUPLING	○	WASTE WATER SEWER	○	DATE
○	MANHOLE	○	MTS	○	PAVEMENT CROWN	○	DATE
□	CATCH BASIN	□	GAS	○	GROUNDLINE	○	DATE
△	CURB INLET	△	ASPHALT	○		○	DATE
⊞	CULVERT	⊞	CONCRETE	○		○	DATE
⊞	COMMUNITY MAILBOX	⊞	LIP CURB	○		○	DATE
⊞	SURVEY BAR	⊞	MODIFIED BARRIER CURB	○		○	DATE
⊞	LEGEND - PLAN	⊞	RAMP CURB	○		○	DATE
○	NEW	○	LEGEND - PLAN	○		○	DATE
○	EXISTING	○	LEGEND - PROFILE	○		○	DATE

**LOCATION APPROVED**  
UNDERGROUND STRUCTURES

NOTE:  
LOCATION OF UNDERGROUND STRUCTURES AS SHOWN ARE BASED ON THE BEST INFORMATION AVAILABLE. BUT NO GUARANTEE IS GIVEN THAT ALL EXISTING UTILITIES ARE SHOWN OR THAT THE GIVEN LOCATIONS ARE EXACT. CONFIRMATION OF EXISTENCE AND EXACT LOCATION OF ALL SERVICES MUST BE OBTAINED FROM THE INDIVIDUAL UTILITIES BEFORE PROCEEDING WITH CONSTRUCTION.

BM 24 020  
ELEV 232.884m

N.W. Cor Magnus Ave. & Railway St., Tbl. in N. Conc. foundation of Shaughnessy United Church, 9m W. & 0.5m below brick of most N. Ely. Cor. of N. wall of Church.

**METRIC**  
WHOLE NUMBERS INDICATE MILLIMETRES  
DECIMALIZED NUMBERS INDICATE METRES

**UMA**  
www.umagroup.com  
2004 UMA ENGINEERING LTD. ALL RIGHTS RESERVED.

DESIGNED BY: ALD  
CHECKED BY: [Signature]  
DRAWN BY: ADL  
APPROVED BY: [Signature]  
HOR. SCALE: 1:250  
VERT. SCALE: 1:50  
ISSUED FOR CONSTRUCTION: 04/05/31 ADL  
NO. REVISIONS: YYYMMDD BY: [Signature]

**APCGM**  
Certificate of Authorization  
UMA Engineering Ltd.  
No. 256 Expiry: April 30, 2005

PROFESSIONAL'S SEAL  
C.C. MACEY  
REGISTERED ENGINEER  
CONSULTANT DRAWING NO. 05  
D265-107-01

**THE CITY OF WINNIPEG**  
WATER AND WASTE DEPARTMENT

**2004 COMBINED SEWER RENEWALS**  
CONTRACT 12  
SEWER LINING

188m E OF LEO NOVAK STREET  
TO RAILWAY STREET

SHEET 05 OF 08  
CITY DRAWING NUMBER  
**05459**  
REV 0

BID OPPORTUNITY NO. 240-2004

UMA FILE NAME: D265-107-01\_12-C-1005\_RX.DWG 2004-05-27 9:46pm ADL