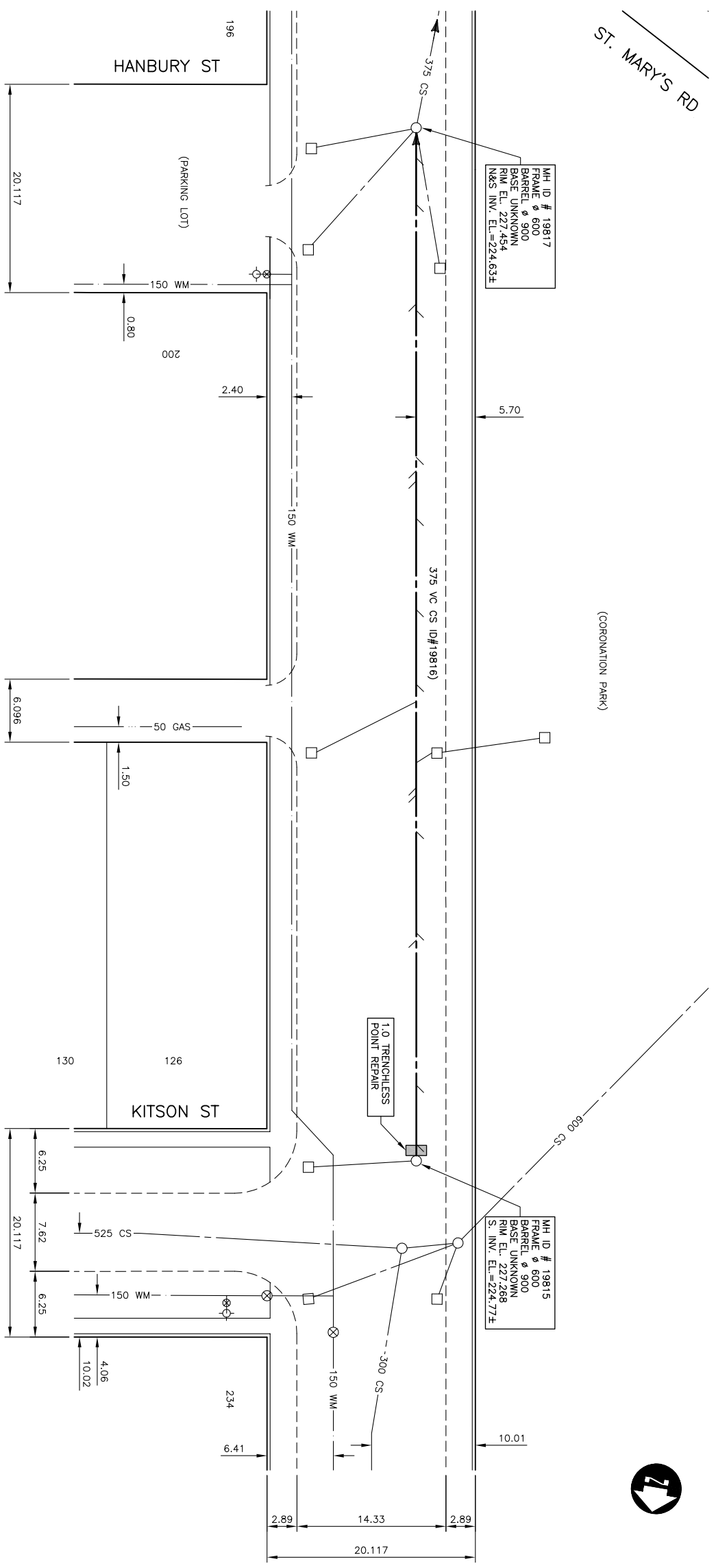


| SEWER SERVICE INFORMATION (ID #19816) * | |
|---|---------------------------------|
| DISTANCE FROM MH AT KITSON | |
| (MH ID #19815) | |
| 1.6 N | SERVICE CONNECTION W |
| 7.3 N | SERVICE CONNECTION W |
| 21.3 N | SERVICE CONNECTION E |
| 22.0 N | SERVICE CONNECTION W |
| 31.8 N | SERVICE CONNECTION W |
| 35.3 N | SERVICE CONNECTION E |
| 36.0 N | SERVICE CONNECTION E |
| 38.4 N | SERVICE CONNECTION W |
| 44.3 N | SERVICE CONNECTION E |
| 46.0 N | SERVICE CONNECTION W |
| 53.2 N | SERVICE CONNECTION W |
| 62.0 N | SERVICE CONNECTION W |
| 66.6 N | SERVICE CONNECTION E |
| 67.9 N | SERVICE CONNECTION E |
| 82.1 N | SERVICE CONNECTION W |
| 82.7 N | SERVICE CONNECTION E |
| 89.3 N | SERVICE CONNECTION (12 O'CLOCK) |
| 92.3 N | SERVICE CONNECTION W |
| 96.8 N | SERVICE CONNECTION W |

* INFORMATION FROM SEWER VIDEO INSPECTION



TACHE AVENUE

WARNING

IF POWER EQUIPMENT OR EXPLOSIVES ARE TO BE USED FOR EXCAVATION ON THIS PROJECT THE CONTRACTOR MUST:
 1. NOTIFY THE GAS COMPANY OF THE PROPOSED LOCATION OF EXCAVATION.
 2. TAKE PRECAUTION TO AVOID DAMAGE TO GAS COMPANY INSTALLATIONS.
 SEE PROVINCIAL REGULATION 210/72 FOR DETAILS.

METRIC

WHOLE NUMBERS INDICATE MILLIMETRES
 DECIMALIZED NUMBERS INDICATE METRES

| 150 mm W.M. | 150 mm W.M. | 150 mm W.M. | 150 mm W.M. | 150 mm W.M. | 150 mm W.M. | 150 mm W.M. | 150 mm W.M. | 150 mm W.M. | 150 mm W.M. | | | | | | | | | |
|---|-----------------------------|-------------------|-------------------|-------------------|-------------------|-------------------|-------------|----------------|-------------|-----|-------------|------|---|-----------------------------|-----------------|---|-------------------|-----------------|
| WATERMAIN | WATERMAIN | HYDRANT | WATERMAIN | HYDRANT | WATERMAIN | HYDRANT | WATERMAIN | HYDRANT | WATERMAIN | | | | | | | | | |
| VALVE | VALVE | CONCRETE | ASPHALT | PROPERTY LINE | SURVEY BAR | SERVICE VALVE | I.P.S. | BUILDING | | | | | | | | | | |
| LAND DRAINAGE SEWER | LAND DRAINAGE SEWER | WASTE WATER SEWER | WASTE WATER SEWER | WASTE WATER SEWER | NORTH/WEST GUTTER | SOUTH/EAST GUTTER | | | | | | | | | | | | |
| MANHOLE | CATCH BASIN | CURB INLET | JUNCTIONS | CULVERT | GAS | | | | | | | | | | | | | |
| LEGEND-PLAN | LEGEND-PLAN | LEGEND-PROFILE | LEGEND-PLAN | LEGEND-PROFILE | PROPOSED | EXISTING | LEGEND-PLAN | LEGEND-PROFILE | PROPOSED | | | | | | | | | |
| <p>UNDERGROUND STRUCTURES</p> <table border="1"> <thead> <tr> <th>NO.</th> <th>DESCRIPTION</th> <th>DATE</th> </tr> </thead> <tbody> <tr> <td>1</td> <td>SUBMITTED TO M&W FOR REVIEW</td> <td>09/19/04 P.M.K.</td> </tr> <tr> <td>2</td> <td>ISSUED FOR TENDER</td> <td>09/29/04 P.M.K.</td> </tr> </tbody> </table> <p>DESIGNED BY: J.K.M. CHECKED BY: P.M.K. APPROVED BY: P.M.K. HOR. SCALE: 1:500 VERTICAL SCALE: VERTICAL DATE: APRIL 2004</p> <p>DILLON CONSULTING</p> <p>ENGINEER'S SEAL: PROVINCE OF MANITOBA REGISTERED PROFESSIONAL ENGINEER P.M. KREITZ 09/26/04</p> <p>CONSULTANT DRAWING NO.: 043031-10</p> <p>THE CITY OF WINNIPEG WATER AND WASTE DEPARTMENT</p> <p>2004 COMBINED SEWER RENEWALS BY CIPP LINING, CONTRACT 9 TACHE AVENUE MH AT KITSON ST (S. OF CL) TO MH AT HANBURY ST</p> <p>CITY DRAWING NUMBER: 05408 SHEET: 10 OF: 15 BID OPPORTUNITY NO.: 238-2004</p> | | | | | | | | | | NO. | DESCRIPTION | DATE | 1 | SUBMITTED TO M&W FOR REVIEW | 09/19/04 P.M.K. | 2 | ISSUED FOR TENDER | 09/29/04 P.M.K. |
| NO. | DESCRIPTION | DATE | | | | | | | | | | | | | | | | |
| 1 | SUBMITTED TO M&W FOR REVIEW | 09/19/04 P.M.K. | | | | | | | | | | | | | | | | |
| 2 | ISSUED FOR TENDER | 09/29/04 P.M.K. | | | | | | | | | | | | | | | | |