

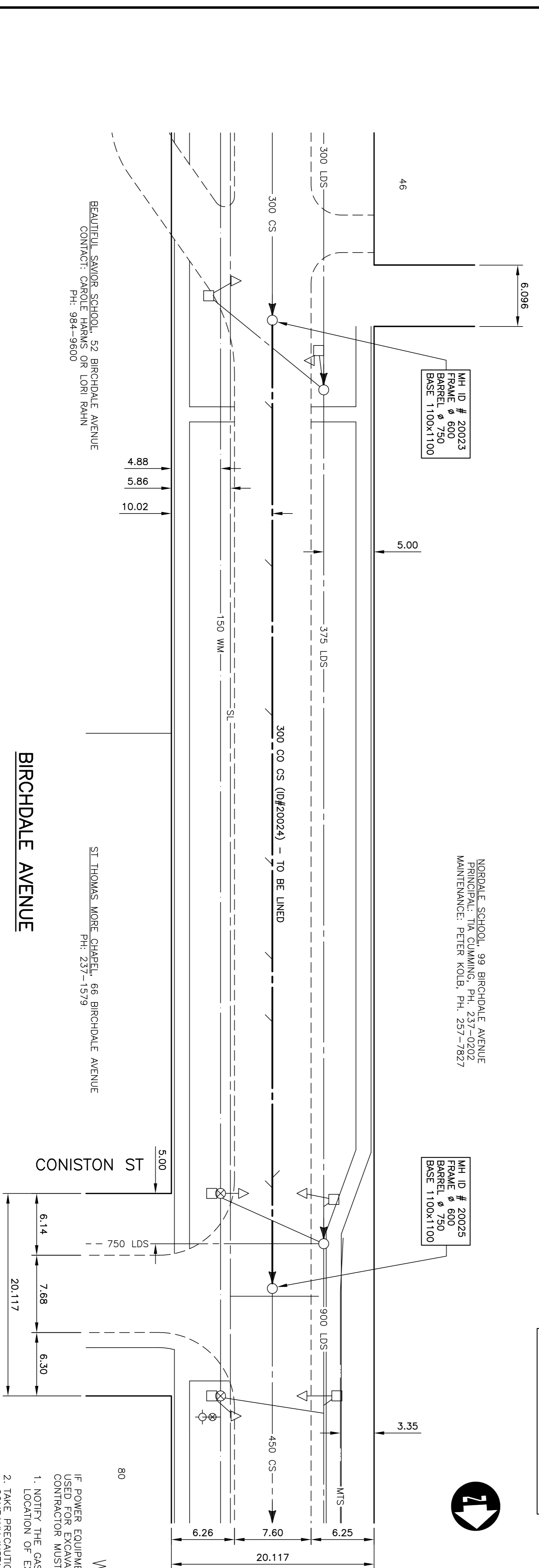
SEWER SERVICE INFORMATION (ID #20024) *

(MH ID #20023)

8.8 N	SERVICE CONNECTION E
24.5 N	SERVICE CONNECTION E
39.3 N	SERVICE CONNECTION E
54.1 N	SERVICE CONNECTION E
63.5 N	SERVICE CONNECTION E
69.7 N	SERVICE CONNECTION E
85.2 N	SERVICE CONNECTION W
86.2 N	SERVICE CONNECTION E

* INFORMATION FROM SEWER VIDEO INSPECTION

NOTE: CHANGE ALONG EAST PROPERTY LINE BIRCHDALE AVENUE



BEAUTEIL SAVIOR SCHOOL, 52 BIRCHDALE AVENUE
CONTACT: CAROLE HARRIS OR LORI RAHN
PH: 984-9600

NORDALE SCHOOL, 99 BIRCHDALE AVENUE
PRINCIPAL: TIM CUMMING, PH. 237-0202
MAINTENANCE: PETER KOEB, PH. 257-7827

ST THOMAS MORE CHAPEL, 66 BIRCHDALE AVENUE
PH: 237-1579

BIRCHDALE AVENUE

WARNING

IF POWER EQUIPMENT OR EXPLOSIVES ARE TO BE USED FOR EXCAVATION ON THIS PROJECT THE CONTRACTOR MUST:

1. NOTIFY THE GAS COMPANY OF THE PROPOSED LOCATION OF EXCAVATION.
2. TAKE PRECAUTION TO AVOID DAMAGE TO GAS COMPANY INSTALLATIONS

SEE PROVINCIAL REGULATION 210/72 FOR DETAILS

METRIC

WHOLE NUMBERS INDICATE MILLIMETRES
DECIMALIZED NUMBERS INDICATE METRES

EXISTING	LEGEND-PLAN	PROPOSED	EXISTING	LEGEND-PLAN	PROPOSED	EXISTING	LEGEND-PROFILE	PROPOSED
150 mm W.M.	WATERMAIN	150 mm W.M.	HYDRO	150 mm W.M.	WATERMAIN	150 mm W.M.		
300 mm L.O.S.	LAND DRAINAGE SEWER	300 mm L.O.S.	M.T.S.	300 mm L.O.S.	CONCRETE			
250 mm W.M.S.	WASTE WATER SEWER	250 mm W.M.S.	PROPERTY LINE	250 mm W.M.S.	LAND DRAINAGE SEWER			
	MANHOLE		SURVEY BAR		WASTE WATER SEWER			
	CATCH BASIN		SERVICE VALVE		300 mm L.O.S.			
	CURB INLET		I.P.S.		250 mm W.M.S.			
	JUNCTIONS		BUILDING		300 mm L.O.S.			
	CULVERT				250 mm W.M.S.			
	GAS				300 mm L.O.S.			

UNDERGROUND STRUCTURES

NO.	REVISIONS	DATE	BY
2	ISSUED FOR TENDER	05/26/04	P.M.K.
1	SUBMITTED TO W&W FOR REVIEW	05/10/04	P.M.K.

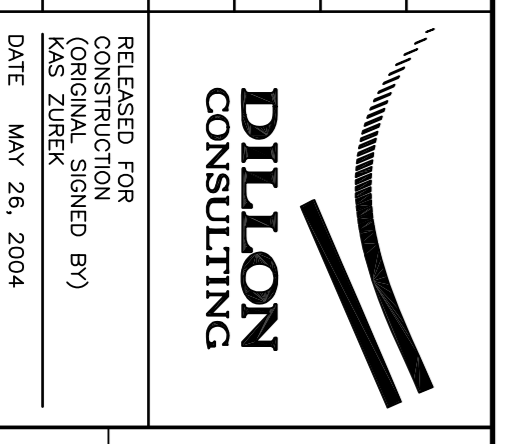
DESIGNED BY	DESIGNED	DATE	BY
J.K.M.			

DRAWN BY	DRAWN	DATE	BY
S.C.C.			

CHECKED BY	CHECKED	DATE	BY
P.M.K.			

APPROVED BY	APPROVED	DATE	BY

HOE SCALE 1:250
VERTICAL 1:50
DATE APRIL 2004



THE CITY OF WINNIPEG
WATER AND WASTE DEPARTMENT

2004 COMBINED SEWER RENEWALS
BY CIPP LINING - CONTRACT 9
BIRCHDALE AVENUE
2ND MH NORTH OF LYNDALE DR
TO MH AT CONISTON ST (CL)

CITY DRAWING NUMBER
05405
SHEET 7 OF 15

BID OPPORTUNITY
No. 238-2004