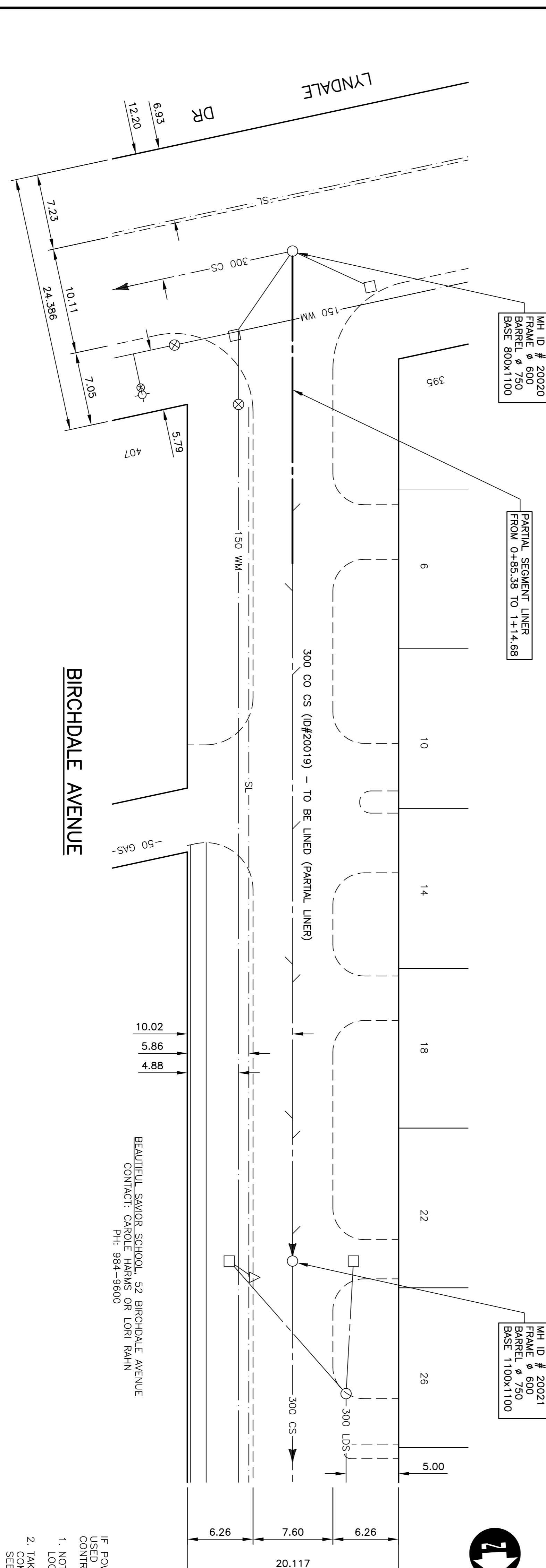


SEWER SERVICE INFORMATION (ID #20019) *

24.8 N	SERVICE CONNECTION W
32.4 N	SERVICE CONNECTION E
40.4 N	SERVICE CONNECTION W
55.1 N	SERVICE CONNECTION E
68.0 N	SERVICE CONNECTION W
69.7 N	SERVICE CONNECTION E
82.7 N	SERVICE CONNECTION W
84.6 N	SERVICE CONNECTION E
93.7 N	SERVICE CONNECTION W

* - INFORMATION FROM SEWER VIDEO INSPECTION

NOTE: CHANGE ALONG EAST PROPERTY LINE BIRCHDALE AVENUE



BEAUTIFUL SAVOR SCHOOL, 52 BIRCHDALE AVENUE
 CONTACT: CAROLE HARMS OR LORI RAHN
 PH: 984-9600

WARNING

IF POWER EQUIPMENT OR EXPLOSIVES ARE TO BE USED FOR EXCAVATION ON THIS PROJECT THE CONTRACTOR MUST:

1. NOTIFY THE GAS COMPANY OF THE PROPOSED LOCATION OF EXCAVATION.
2. TAKE PRECAUTION TO AVOID DAMAGE TO GAS COMPANY INSTALLATIONS

SEE PROVINCIAL REGULATION 210/72 FOR DETAILS

METRIC

WHOLE NUMBERS INDICATE MILLIMETRES
 DECIMALIZED NUMBERS INDICATE METRES

150 mm W.M.	WATERMAIN	150 mm W.M.	WATERMAIN	150 mm W.M.	WATERMAIN	150 mm W.M.	WATERMAIN
300 mm L.O.S.	LAND DRAINAGE SEWER VALVE	300 mm L.O.S.	LAND DRAINAGE SEWER VALVE	300 mm L.O.S.	LAND DRAINAGE SEWER VALVE	300 mm L.O.S.	LAND DRAINAGE SEWER VALVE
250 mm W.M.S.	WASTE WATER SEWER	250 mm W.M.S.	WASTE WATER SEWER	250 mm W.M.S.	WASTE WATER SEWER	250 mm W.M.S.	WASTE WATER SEWER
○	MANHOLE	●	PROPERTY LINE	○	PROPERTY LINE	○	PROPERTY LINE
▽	CATCH BASIN	□	SURVEY BAR	□	SURVEY BAR	□	SURVEY BAR
—	CURB INLET	—	SERVICE VALVE	—	SERVICE VALVE	—	SERVICE VALVE
—	JUNCTIONS	—	I.P.S.	—	I.P.S.	—	I.P.S.
—	CULVERT	—	BUILDING	—	BUILDING	—	BUILDING
—	GAS	—		—		—	
EXISTING	LEGEND-PLAN	PROPOSED	EXISTING	LEGEND-PLAN	PROPOSED	EXISTING	LEGEND-PROFILE

UNDERGROUND STRUCTURES	
NO.	DATE
1	ISSUED FOR TENDER
2	SUBMITTED TO WAW FOR REVIEW

DESIGNED BY	J.K.M.
DRAWN BY	S.C.C.
CHECKED BY	P.M.K.
APPROVED BY	
HOR. SCALE	1:250
VERTICAL	1:50
DATE	APRIL 2004

ENGINEER'S SEAL

PROVINCIAL REGISTERED PROFESSIONAL ENGINEER

ORIGINAL BY
 S.D.M.
 KREITZ
 05/28/04

CONSULTANT DRAWING NO. 043031-05

THE CITY OF WINNIPEG
 WATER AND WASTE DEPARTMENT

2004 COMBINED SEWER RENEWALS
 BY CIPP LINING, CONTRACT 9
 BIRCHDALE AVENUE
 MH AT LYNDALE DR
 TO 1ST MH NORTH OF LYNDALE DR

CITY DRAWING NUMBER 05403
 SHEET 5 OF 15

BID OPPORTUNITY No. 238-2004