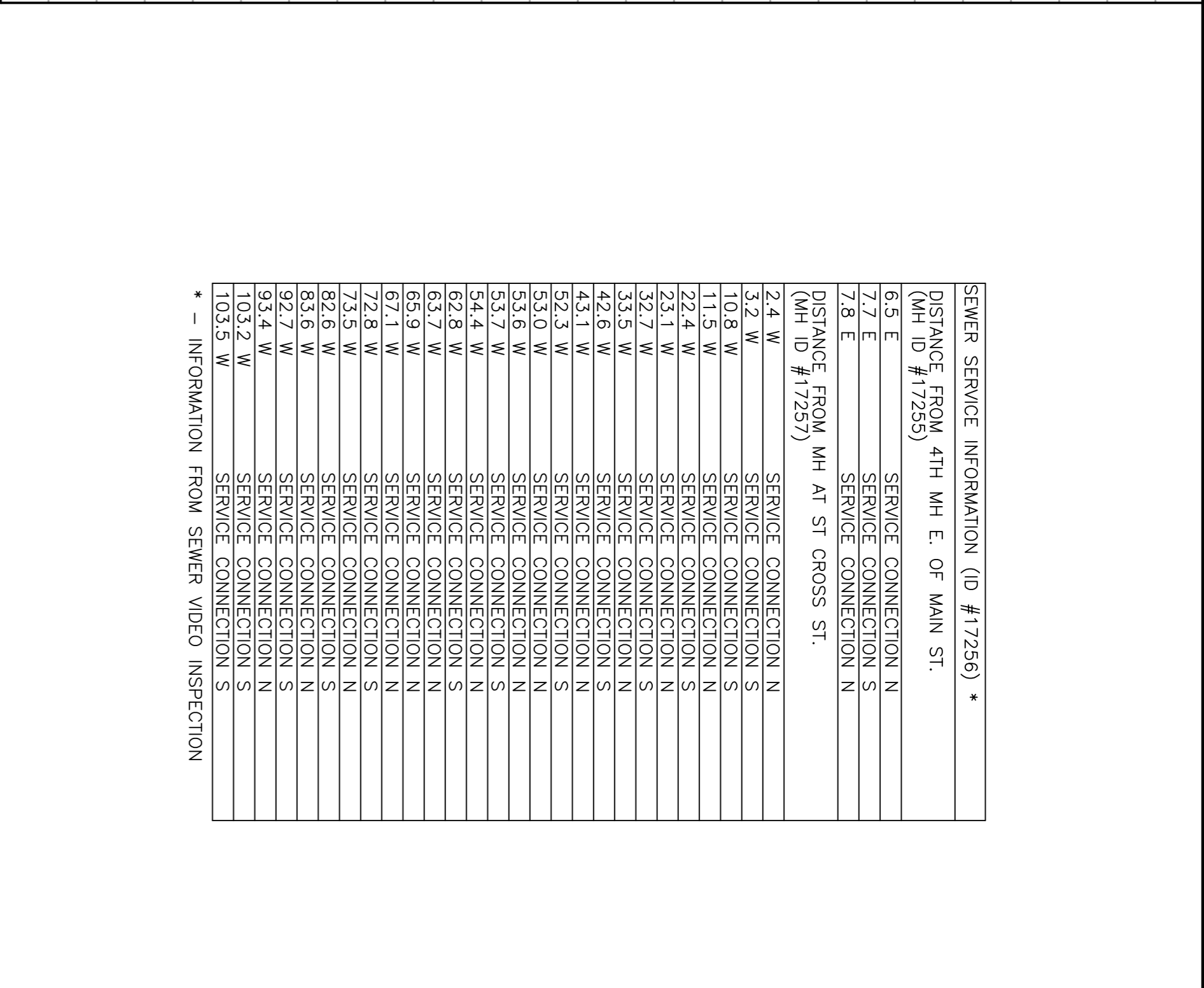


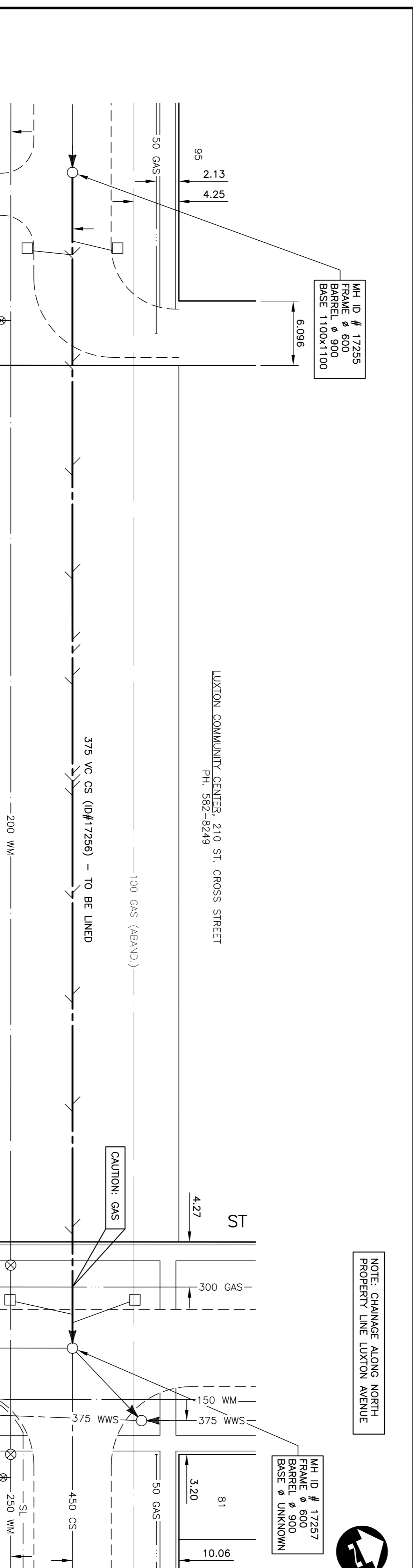
SEWER SERVICE INFORMATION (ID #17256) *

DISTANCE FROM 4TH MH E. OF MAIN ST. (MH ID #17255)	6.5 E	SERVICE CONNECTION N
	7.7 E	SERVICE CONNECTION S
	7.8 E	SERVICE CONNECTION N
DISTANCE FROM MH AT ST CROSS ST. (MH ID #17257)		
2.4 W	SERVICE CONNECTION N	
3.2 W	SERVICE CONNECTION S	
10.8 W	SERVICE CONNECTION S	
11.5 W	SERVICE CONNECTION N	
22.4 W	SERVICE CONNECTION S	
23.1 W	SERVICE CONNECTION N	
32.7 W	SERVICE CONNECTION S	
33.5 W	SERVICE CONNECTION N	
42.6 W	SERVICE CONNECTION S	
43.1 W	SERVICE CONNECTION N	
52.3 W	SERVICE CONNECTION S	
53.0 W	SERVICE CONNECTION N	
53.6 W	SERVICE CONNECTION S	
54.4 W	SERVICE CONNECTION N	
62.8 W	SERVICE CONNECTION S	
63.7 W	SERVICE CONNECTION N	
65.9 W	SERVICE CONNECTION S	
67.1 W	SERVICE CONNECTION N	
72.8 W	SERVICE CONNECTION S	
73.5 W	SERVICE CONNECTION N	
82.6 W	SERVICE CONNECTION S	
83.6 W	SERVICE CONNECTION N	
92.7 W	SERVICE CONNECTION S	
93.4 W	SERVICE CONNECTION N	
103.2 W	SERVICE CONNECTION S	
103.5 W	SERVICE CONNECTION N	

* - INFORMATION FROM SEWER VIDEO INSPECTION



NOTE: CHANGE ALONG NORTH PROPERTY LINE LUXTON AVENUE



LUXTON SCHOOL, 111 POLSON AVENUE
 PRINCIPAL: MR. T. ROSSI, PH: 589-4388
 CUSTODIAN: MR. W. O'HANLEY

MARY KAROLASH CHILD CARE CENTER, 111 POLSON AVENUE
 ADMINISTRATOR: DAMN TOCCI, 989-4752

LUXTON AVENUE (R.O.W.)

WARNING

IF POWER EQUIPMENT OR EXPLOSIVES ARE TO BE USED FOR EXCAVATION ON THIS PROJECT THE CONTRACTOR MUST:

1. NOTIFY THE GAS COMPANY OF THE PROPOSED LOCATION OF EXCAVATION.
2. TAKE PRECAUTION TO AVOID DAMAGE TO GAS COMPANY INSTALLATIONS SEE PROVINCIAL REGULATION 210/72 FOR DETAILS

METRIC
 WHOLE NUMBERS INDICATE MILLIMETRES
 DENORMALIZED NUMBERS INDICATE METRES

EXISTING	LEGEND-PLAN	PROPOSED	EXISTING	LEGEND-PLAN	PROPOSED	EXISTING	LEGEND-PROFILE	PROPOSED
150 mm W.M.	WATERMAIN	150 mm W.M.	HYDRO	150 mm W.M.	WATERMAIN	150 mm W.M.		
300 mm L.O.S.	LAND DRAINAGE SEWER	300 mm L.O.S.	M.T.S.	300 mm L.O.S.	VALVE	300 mm L.O.S.		
250 mm W.W.S.	WASTE WATER SEWER	250 mm W.W.S.	CONCRETE	250 mm W.W.S.	LAND DRAINAGE SEWER	250 mm W.W.S.		
	MANHOLE		PROPERTY LINE		WASTE WATER SEWER			
	CATCH BASIN		SURVEY BAR		PROPERTY LINE			
	CURB INLET		SERVICE VALVE		PROPERTY LINE			
	JUNCTIONS		L.P.S.		PROPERTY LINE			
	CULVERT		BUILDING		PROPERTY LINE			
	GAS				PROPERTY LINE			

UNDERGROUND STRUCTURES

NO.	REVISIONS	DATE	BY
1	SUBMITTED TO WAW FOR REVIEW	02/26/04	P.M.K.
2	ISSUED FOR TENDER	02/26/04	P.M.K.

DESIGNED BY: J.K.M.

DRAWN BY: S.C.C.

CHECKED BY: P.M.K.

APPROVED BY:

HOR. SCALE: 1:250

VERTICAL: 1:50

DATE: APRIL 2004

RELEASED FOR ORIGINAL SIGNATURE BY: GAS ZUREK

DATE: MAY 28, 2004

CONSULTANT DRAWING NO. 043031-04

THE CITY OF WINNIPEG
 WATER AND WASTE DEPARTMENT

2004 COMBINED SEWER RENEWALS
 BY CIPP LINING, CONTRACT 9
 LUXTON AVENUE (R.O.W.)
 4TH MH EAST OF MAIN ST
 TO MH AT ST. CROSS ST (CL)

CITY DRAWING NUMBER: 05402
 SHEET: 4 OF 15

BID OPPORTUNITY: 238-2004