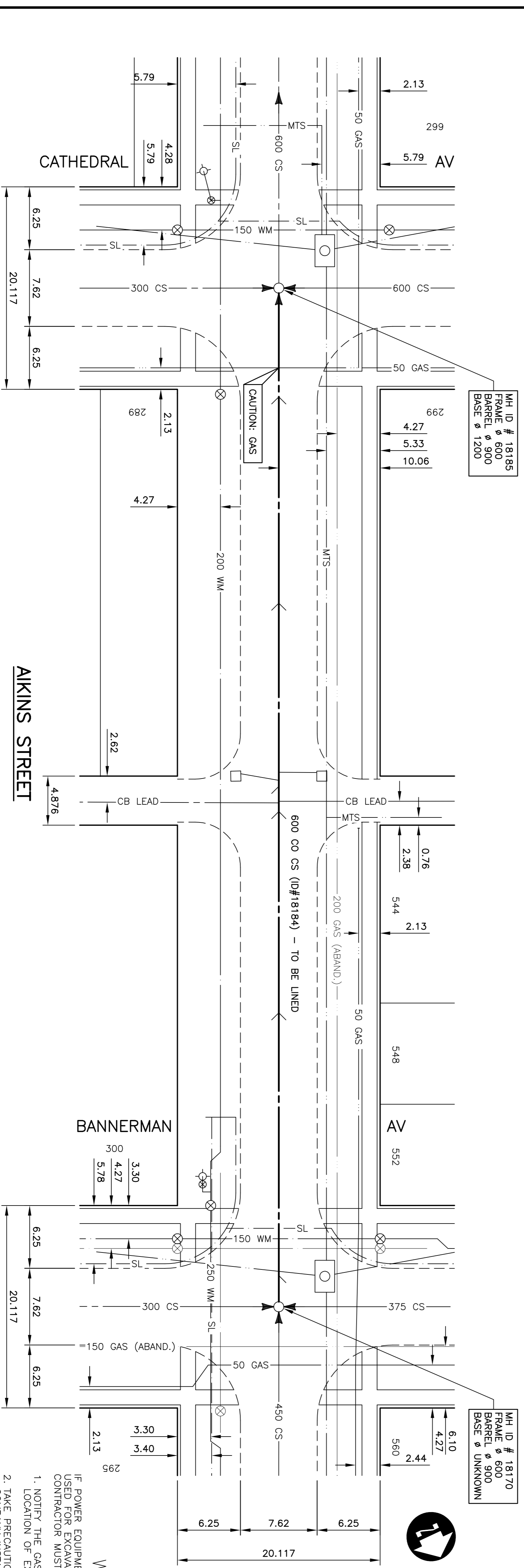


SEWER SERVICE INFORMATION (ID #18184) *

DISTANCE FROM MH AT BANNERMAN AV (MH ID #18170)	DESCRIPTION
3.10 S	SERVICE CONNECTION W
29.2 S	SERVICE CONNECTION W
29.2 S	SERVICE CONNECTION E
49.2 S	SERVICE CONNECTION W
49.2 S	SERVICE CONNECTION E
51.7 S	SERVICE CONNECTION W
52.3 S	SERVICE CONNECTION E
53.1 S	SERVICE CONNECTION W
69.9 S	SERVICE CONNECTION E
69.9 S	SERVICE CONNECTION W
90.4 S	SERVICE CONNECTION E
90.4 S	SERVICE CONNECTION W

* - INFORMATION FROM SEWER VIDEO INSPECTION



WARNING

IF POWER EQUIPMENT OR EXPLOSIVES ARE TO BE USED FOR EXCAVATION ON THIS PROJECT THE CONTRACTOR MUST:

1. NOTIFY THE GAS COMPANY OF THE PROPOSED LOCATION OF EXCAVATION.
2. TAKE PRECAUTION TO AVOID DAMAGE TO GAS COMPANY INSTALLATIONS

SEE PROVINCIAL REGULATION 210/72 FOR DETAILS

METRIC

WHOLE NUMBERS INDICATE MILLIMETRES
DECIMALIZED NUMBERS INDICATE METRES

EXISTING	LEGEND-PLAN	PROPOSED	EXISTING	LEGEND-PLAN	PROPOSED	EXISTING	LEGEND-PROFILE	PROPOSED
150 mm W.M.	WATERMAIN	150 mm W.M.	150 mm W.M.	WATERMAIN	150 mm W.M.	150 mm W.M.	WATERMAIN	150 mm W.M.
300 mm L.O.S.	HYDRANT VALVE	300 mm L.O.S.	300 mm L.O.S.	HYDRANT VALVE	300 mm L.O.S.	300 mm L.O.S.	HYDRANT VALVE	300 mm L.O.S.
250 mm W.M.S.	LAND DRAINAGE SEWER	250 mm W.M.S.	250 mm W.M.S.	LAND DRAINAGE SEWER	250 mm W.M.S.	250 mm W.M.S.	LAND DRAINAGE SEWER	250 mm W.M.S.
	WASTE WATER SEWER			WASTE WATER SEWER			WASTE WATER SEWER	
	MANHOLE			MANHOLE			MANHOLE	
	CATCH BASIN			CATCH BASIN			CATCH BASIN	
	CURB INLET			CURB INLET			CURB INLET	
	JUNCTIONS			JUNCTIONS			JUNCTIONS	
	CULVERT			CULVERT			CULVERT	
	GAS			GAS			GAS	

UNDERGROUND STRUCTURES

SUP. U/G STRUCTURES	DATE

NOTE: DRAWING OF UNDERGROUND STRUCTURES AS SHOWN ARE BASED ON THE BEST INFORMATION AVAILABLE TO THE ENGINEER. THE ENGINEER DOES NOT GUARANTEE THE EXISTENCE, LOCATION, OR DEPTH OF ANY UTILITIES OR STRUCTURES. THE CONTRACTOR SHALL VERIFY THE LOCATION AND DEPTH OF ALL UTILITIES AND STRUCTURES BEFORE PROCEEDING WITH CONSTRUCTION.

B.M. NO.	ELEV.	REVISIONS	DATE
2		ISSUED FOR TENDER	05/28/04
1		SUBMITTED TO WAW FOR REVIEW	05/10/04

DESIGNED BY	DATE	CHECKED BY	DATE
J.K.M.	05/28/04	P.M.K.	05/10/04
S.C.C.		P.M.K.	

HOR. SCALE 1:250
VERTICAL 1:50
DATE APRIL 2004

DILLON CONSULTING

RELEASED FOR ORIGINAL SIGNATURE BY GAS ZUREK
DATE MAY 28, 2004

ENGINEER'S SEAL
PROVINCE OF MANITOBA
REGISTERED PROFESSIONAL ENGINEER
KREITZ
05/28/04

THE CITY OF WINNIPEG WATER AND WASTE DEPARTMENT

2004 COMBINED SEWER RENEWALS
BY CIPP LINING, CONTRACT 9
AIKINS STREET
MH AT BANNERMAN AV
TO MH AT CATHEDRAL AV

CITY DRAWING NUMBER 05400
SHEET 2 OF 15
BID OPPORTUNITY No. 238-2004