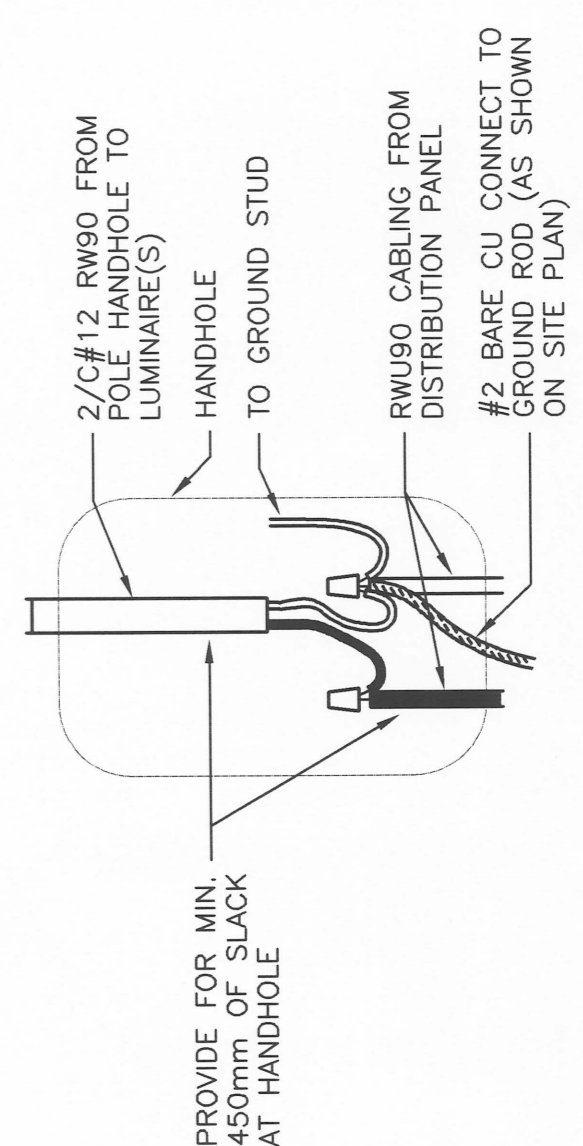
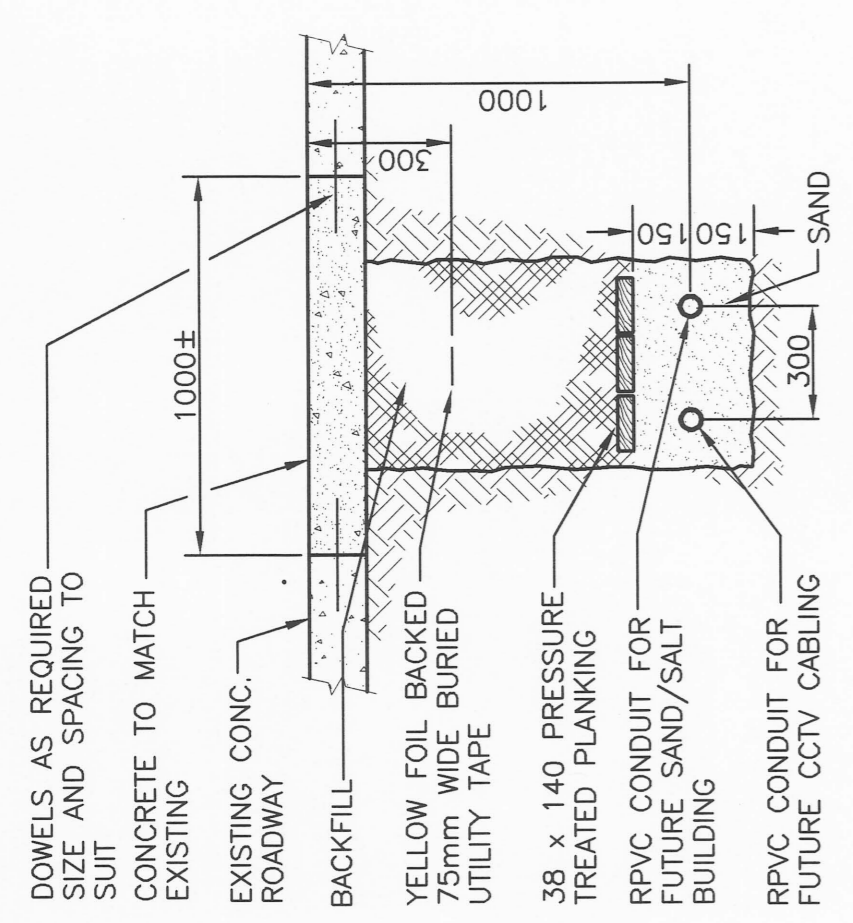


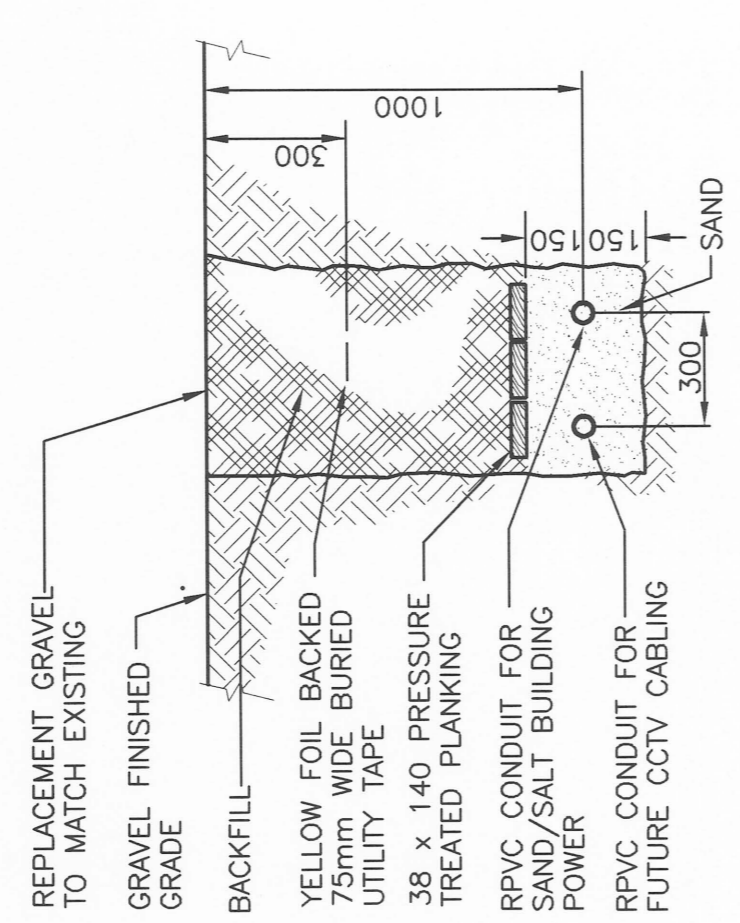
A N.T.S.
04 | 05



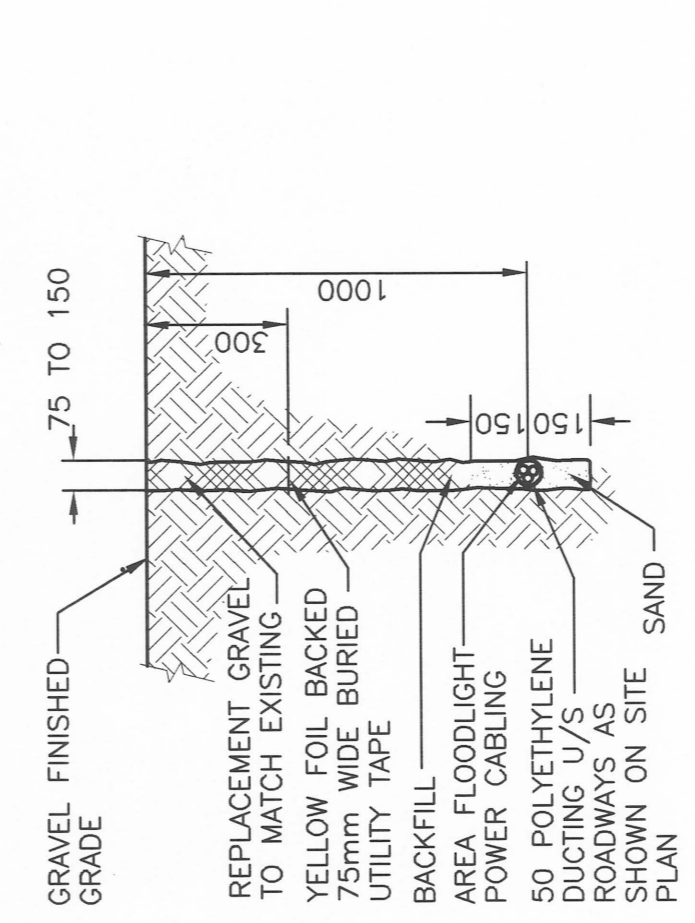
G N.T.S.



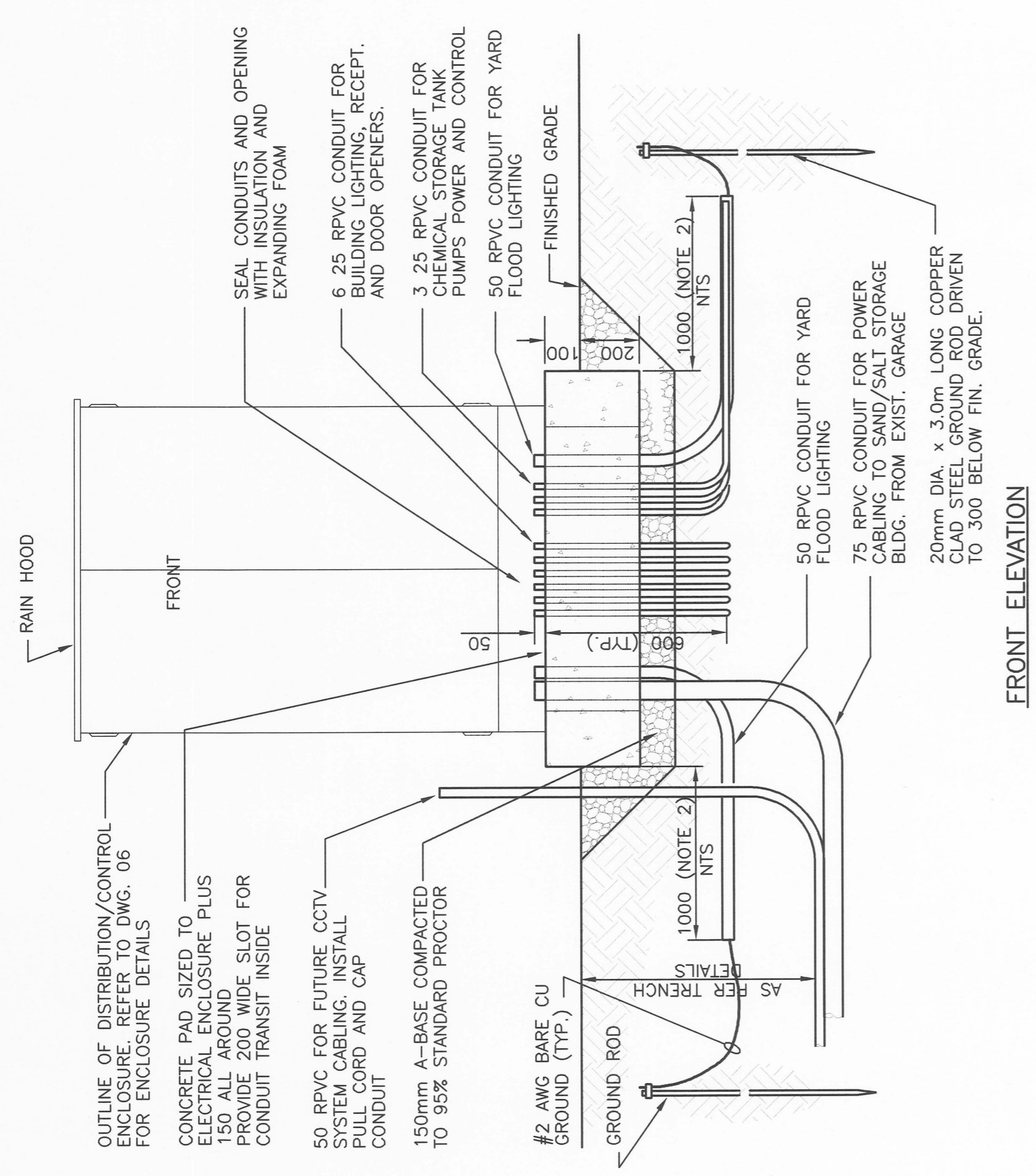
B N.T.S.
04 | 05



C N.T.S.
04 | 05



D N.T.S.
04 | 05



F 1:20
04 | 05

EXISTING 800A, 120/208V, 3PH, 4W CDP 'B' LOCATED ON MEZZANINE FLOOR

USE EXISTING 100A, 3P CIRCUIT BREAKER FOR NEW SAND/SALT STORAGE BLDG. ELECTRICAL DISTRIBUTION

B01	40A 3P	B12	100A 3P
B02	100A 3P	B13	100A 3P
B03	100A 3P	B14	100A 3P
B04	100A 3P	B15	100A 3P
B05	200A 3P	B16	150A 3P
B06	150A 3P	B17	SPACE
B07	200A 3P	B18	200A 3P
B08	SPACE	B19	SPACE
B09	SPACE	B20	SPACE
B10	SPACE	B21	SPACE
B11	SPACE		

E N.T.S.
04 | 05

- NOTES**
- EXACT DIMENSIONS OF CONCRETE PAD TO BE DETERMINED AT FINAL SHOP DRAWING APPROVAL.
 - CONDUITS TO EXTEND 1000 PAST THE EDGE OF THE CONCRETE FOUNDATION.

F 1:20
04 | 05

NOT IN CONTRACT FOR REFERENCE PURPOSES ONLY

BID OPPORTUNITY No. 187-2004

METRIC
WHOLE NUMBERS INDICATE MILLIMETRES
DECIMALIZED NUMBERS INDICATE METRES

THE CITY OF WINNIPEG
PUBLIC WORKS DEPARTMENT
ENGINEERING DIVISION

SAND/SALT STORAGE FACILITY
PUBLIC WORKS YARD
1539 WAVERLEY STREET

ENGINEER'S SEAL
PROF. OF MANITOBA
REGISTERED PROFESSIONAL ENGINEER
B.N. FEUER
APR 27/04

UMA Engineering Ltd.
S.W. cor. Waverley St. & Chevalier Blvd.
Elev. 233.501
N.E. corner of Babbler
S.W. cor. Waverley St. & Chevalier Blvd.
Elev. 233.501
N.E. corner of Babbler

CITY DRAWING NUMBER N/A
SHEET 5 OF 6
REV 05
ELECTRICAL DETAILS

CONSULTANT DRAWING NO. 41-09-0265-366-00

DESIGNED BY SCK
DRAWN BY SCK
HOR. SCALE: AS SHOWN
VERTICAL: N/A
Y/M/D: 04/02/12

ISSUED FOR CONSTRUCTION 04Apr23 SCK
ISSUED FOR REVIEW 04Apr02 SCK
REVISIONS NO. DATE BY

1
0