

CHEVRIER BLVD.

NOTES

- CONDUIT FOR FUTURE SAND/SALT STORAGE BUILDING CCTV CABLING TO HAVE NYLON FILL CORE INSTALLED CAP CONDUIT TO PREVENT DEBRIS FROM ENTERING AT EACH END.
- UNDERGROUND SERVICES INCLUDING TELEPHONE, SEWER, WATER, NATURAL GAS, AND ELECTRICAL MAY EXIST IN PROXIMITY OF CONSTRUCTION AREA. COORDINATE FLOOD LIGHT, POWER CABLING AND CONDUIT AND FLOOD LIGHT BASE INSTALLATION TO AVOID THESE SERVICES.

LEGEND

- EXISTING POLE MOUNTED FLOODLIGHT
- NEW POLE MOUNTED FLOODLIGHT
- A DENOTES TYPE OF LUMINAIRE
- B08 DENOTES CIRCUIT NUMBER
- 20mm DIA. x 3m LONG COPPER CLAD GROUND ROD LOCATION
- LOCATION OF BURIED CONDUIT OR CABLING
- 50 POLYETHYLENE DUCT U/S ROADWAYS FOR CABLE TRANSIT. DUCT TO EXTEND 1000 PAST EDGE OF ROADWAY SHOULDER

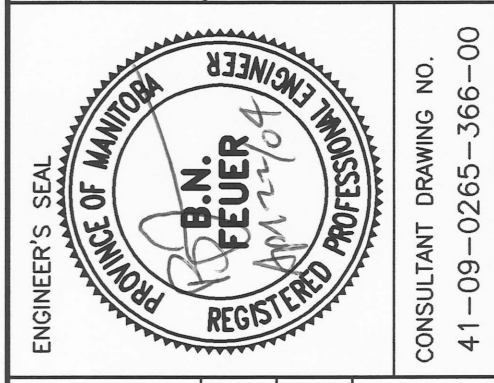
NOT IN CONTRACT FOR REFERENCE PURPOSES ONLY

BID OPPORTUNITY No. 187-2004



THE CITY OF WINNIPEG
PUBLIC WORKS DEPARTMENT
ENGINEERING DIVISION

SAND/SALT STORAGE FACILITY
PUBLIC WORKS YARD
1539 WAVERLEY STREET
ELECTRICAL
SITE PLANS AND SCHEDULES

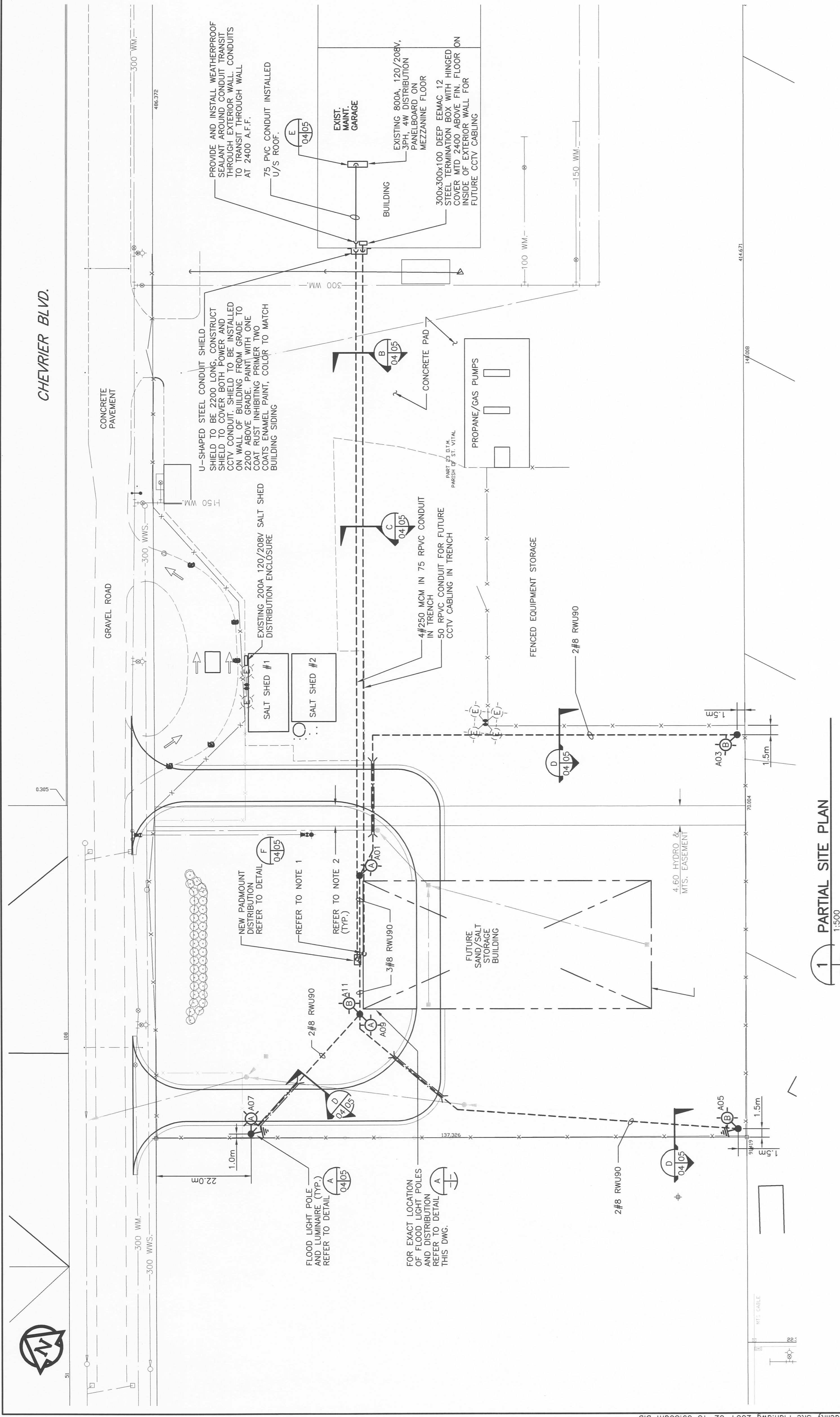


UMA Engineering Ltd.
• Consulting • Engineering • Construction • Management Services

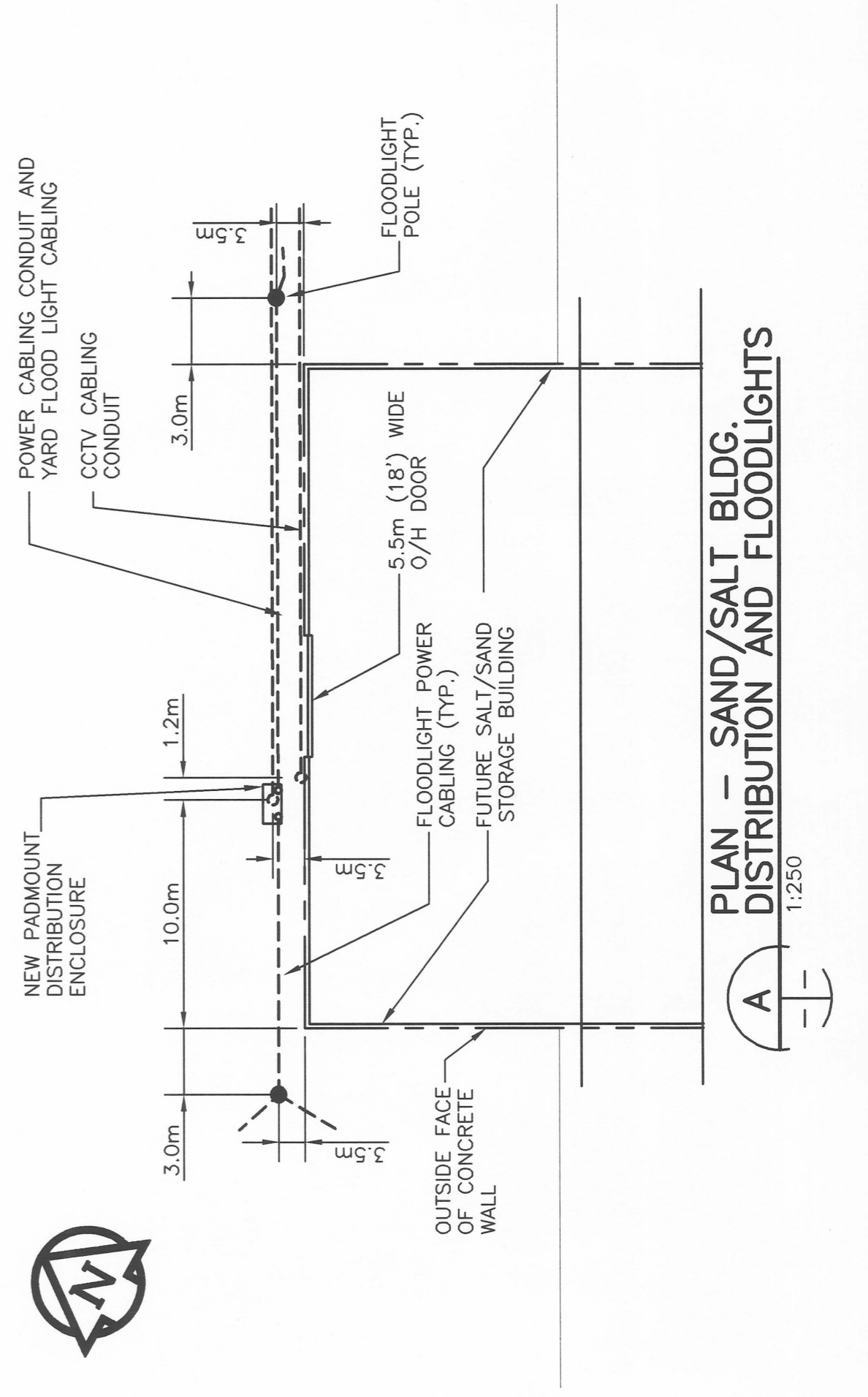
DESIGNED BY: SCK
DRAWN BY: SCK
HOR. SCALE: 1:500
VERTICAL: N/A
DATE: 04/02/12

TYPE	MANUFACTURER	CAT. NO.	LAMP	VOLTAGE	REMARKS
A	LITHONIA	TFA 1000S RN CSA 6 x 3 LIGHT PATTERN	1000W CLEAR HPS	120V	TENON MOUNT FLOODLIGHT ON 12.2m (40') HEXAGON TAPERED POLE, MARTEC MFG. MFP-40 INTERNAL FINISH TO BE DARK BROWN PROVIDE INTERNAL BAFFLES AS REQUIRED TO AVOID SPILL OF LIGHT TO ADJACENT RESIDENTIAL AREAS.
B	LITHONIA	TFA 1000S TA CSA 7 x 7 LIGHT PATTERN	1000W CLEAR HPS	120V	TENON MOUNT FLOODLIGHT ON 12.2m (40') HEXAGON TAPERED POLE, MARTEC MFG. MFP-40 INTERNAL FINISH TO BE DARK BROWN PROVIDE INTERNAL BAFFLES AS REQUIRED TO AVOID SPILL OF LIGHT TO ADJACENT RESIDENTIAL AREAS.

NO.	REVISIONS	DATE	BY
1	ISSUED FOR CONSTRUCTION	04Apr23	SCK
0	ISSUED FOR REVIEW	04Apr02	SCK



PARTIAL SITE PLAN
1:500



PLAN - SAND/SALT BLDG. DISTRIBUTION AND FLOODLIGHTS
1:250