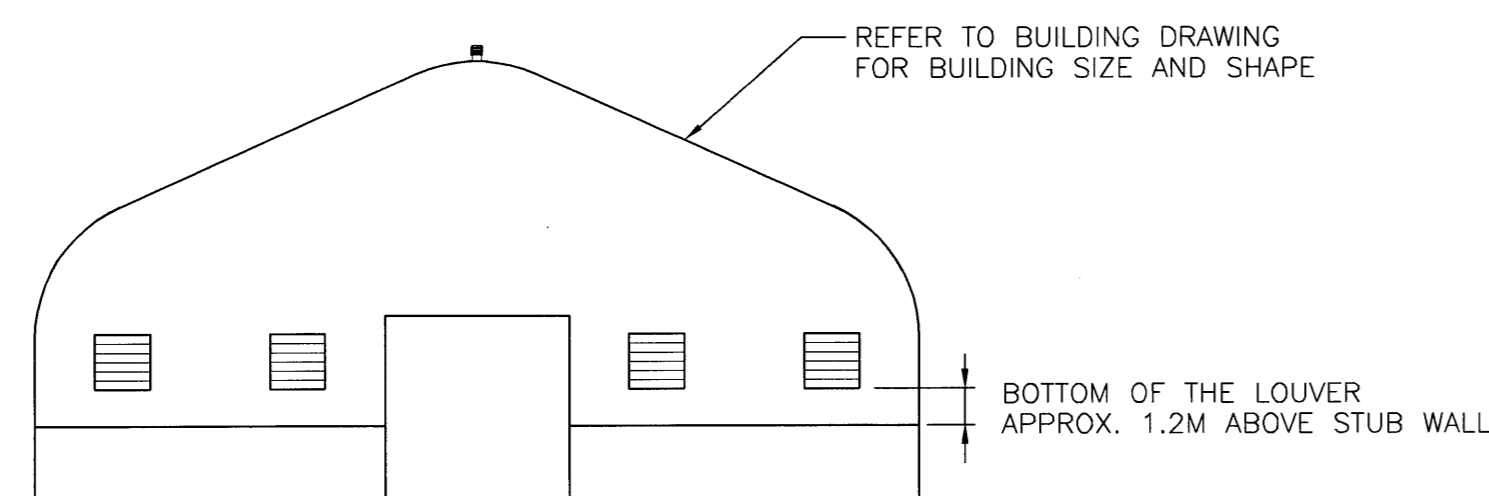
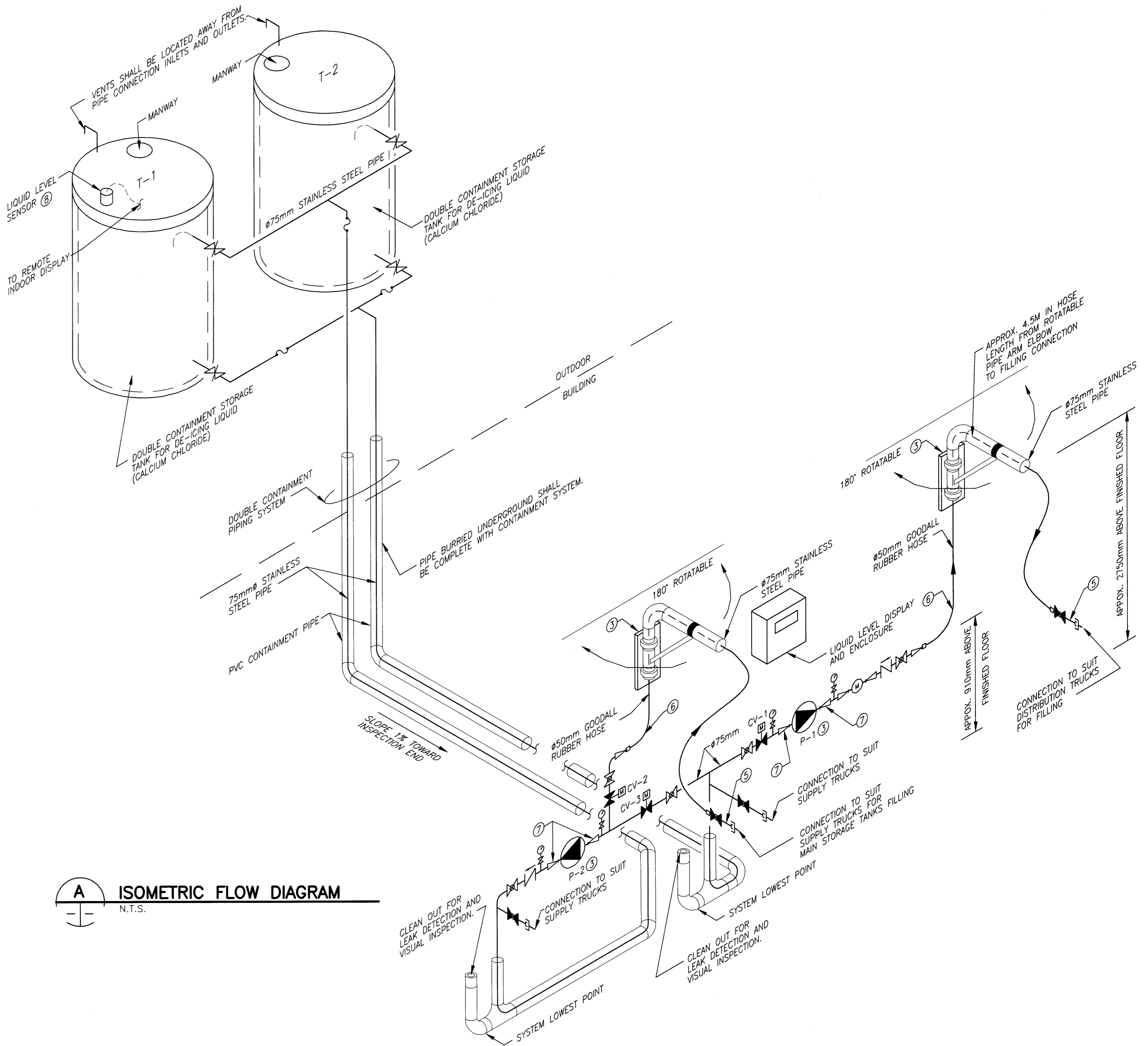


**1 PARTIAL SITE PLAN**  
1:500



**2 ELEVATION**  
N.T.S.



**A ISOMETRIC FLOW DIAGRAM**  
N.T.S.

**DRAWING NOTES:**

- ① EQUIPMENT SHALL BE SECURED TO BUILDING STRUCTURAL SYSTEM. ALL EQUIPMENT AND SUPPORTING MATERIALS SHALL NOT HAVE SHARP EDGE OR CORNERS SO AS TO SUIT BUILDINGS MATERIAL AND FABRICATION. CO-ORDINATE REQUIREMENTS WITH BUILDING SUPPLIER.
- ② DE-ICING LIQUID STORAGE TANKS TO BE MOUNTED ON CONCRETE PAD. REFER TO BUILDING DRAWINGS FOR FURTHER INFORMATION.
- ③ PROVIDE SUPPORTS TO SECURE PIPING, PUMP, AND EQUIPMENT TO CONCRETE STUB WALL. TYPICAL.
- ④ REFER TO **A** FOR FURTHER INFORMATION.
- ⑤ PROVIDE SIMPLE HOSE HOLDING DEVICES ON CONCRETE STUB WALL FOR HOLDING THE HOSES IN PLACE WHEN THEY ARE UN-USED AND FOR SUPPORTING VALVE AND CONNECTION FITTINGS, SO THAT THE HOSE WILL NOT CARRY THE WEIGHT OF THE VALVE AND FITTING DURING SYSTEM IDLE PERIOD.
- ⑥ LONG SMOOTH TRUN AS PER HOSE MANUFACTURER'S RECOMMENDATIONS.
- ⑦ PROVIDE FLANGE CONNECTIONS FOR EASY EQUIPMENT SERVICE. TYPICAL.
- ⑧ LIQUID LEVEL SENSOR SHALL BE LOCATED AS PER SENSOR MANUFACTURER'S RECOMMENDATIONS. CONTRACTOR TO COORDINATE SENSOR LOCATION, CONNECTION FITTING REQUIREMENTS WITH THE TANK MANUFACTURER.

**NOTE:**  
1. SYSTEMS LAYOUTS SHOWN IN THE TENDER DRAWINGS ARE FOR REFERENCE PURPOSE. THE CONTRACTOR IS RESPONSIBLE FOR DESIGN AND PROVIDE CODE COMPLIANT, FULLY FUNCTIONAL SYSTEMS TO SUIT APPLICATION. SYSTEMS SHALL MEET OR EXCEED ALL REQUIREMENTS DESCRIBED IN THE CONTRACT DOCUMENT. THE CONTRACTOR IS RESPONSIBLE FOR ALL DOCUMENT SUBMISSION TO OBTAIN APPROVAL FROM THE CITY.  
2. ALL MATERIALS SHALL BE SUITABLE FOR SALT, SAND, AND DE-ICING LIQUID HANDLING ENVIRONMENT (CORROSIVE).

BID OPPORTUNITY No 229-2004

**APGM**  
Certificate of Authorization  
UMA Engineering Ltd.  
No. 256 Expiry: April 30, 2005

**METRIC**  
WHOLE NUMBERS INDICATE MILLIMETRES  
DECIMALIZED NUMBERS INDICATE METRES

LOCATION APPROVED UNDERGROUND STRUCTURES	B.M. ELEV.
SUPR. U/G STRUCTURES COMMITTEE DATE	
NOTE: LOCATION OF UNDERGROUND STRUCTURES AS SHOWN ARE BASED ON THE BEST INFORMATION AVAILABLE. BUT NO GUARANTEE IS GIVEN THAT ALL EXISTING UTILITIES ARE SHOWN OR THAT THE GIVEN LOCATIONS ARE EXACT. CONFIRMATION OF EXISTENCE AND EXACT LOCATION OF ALL SERVICES MUST BE OBTAINED FROM THE INDIVIDUAL UTILITIES BEFORE PROCEEDING WITH CONSTRUCTION.	
1 ISSUED FOR BID 04May25 CGC	
0 ISSUED FOR REVIEW 04May04 CGC	
NO. REVISIONS DATE BY	

**UMA Engineering Ltd.**  
Consulting • Engineering • Construction • Management Services

DESIGNED BY WY	CHECKED BY
DRAWN BY ALG	APPROVED BY
HOR. SCALE: AS SHOWN	RELEASED FOR CONSTRUCTION
VERTICAL: N/A	DATE
Y/M/D: 04/02/12	

ENGINEER'S SEAL  
**PROVINCE OF MANITOBA**  
**W.Y. YUEN**  
REGISTERED PROFESSIONAL ENGINEER  
CONSULTANT DRAWING NO. 41-09-0265-366-00

**THE CITY OF WINNIPEG**  
PUBLIC WORKS DEPARTMENT  
ENGINEERING DIVISION

SAND/SALT STORAGE FACILITY  
PUBLIC WORKS YARD  
1539 WAVERLEY STREET

Mechanical  
PARTIAL SITE PLAN & FLOW DIAGRAM

CITY DRAWING NUMBER N/A	REV 1
SHEET 4 OF 4	
<b>04</b>	

PLOT SCALE = 1:0.50  
AutoCAD 15.06 P:\0265\366-00\ALD\Sand Salt Facility 1539 Waverley.dwg\Mechanical.M- Site Plan.dwg 2004-05-25 10:34am CGC