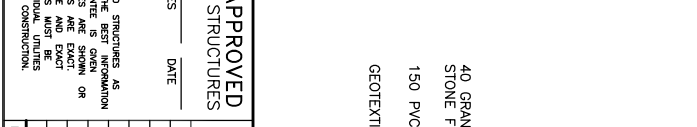


**TYPICAL ROAD X-SECTION**  
SCALE: 1:50

SUB-DRAIN	POLES
300 LBS. LAND DRAINAGE SEWER	TEST HOLE
250 WWS. WASTE WATER SEWER	GUY WIRE
250 WWS. GAS	LIGHT STANDARD
150 WWS. M.T.S.	CONCRETE
150 WWS. WATERMAIN	ASPHALT
150 WWS. HYDRANT	SIDEWALK
150 WWS. VALVE	PROPERTY LINE
150 WWS. CATCH BASIN	SURVEY BAR
150 WWS. CURB INLET	GEODETIC BENCHMARK
EXISTING	ELEVATION
LEGEND-PLAN	LEGEND-PLAN
PROPOSED	PROPOSED
EXISTING	EXISTING
LEGEND-PLAN	LEGEND-PROFILE
PROPOSED	PROPOSED
EXISTING	EXISTING
LEGEND-PLAN	LEGEND-PROFILE
PROPOSED	PROPOSED
EXISTING	EXISTING



**LOCATION APPROVED UNDERGROUND STRUCTURES**

NO.	REVISIONS	DATE	BY	DATE
0	ISSUED FOR TENDER	13/09/04	RAH	

**KGS CONSULTING ENGINEERS & PROJECT MANAGERS**  
WINNIPEG, MANITOBA (907) 546-2233

**DESIGNED BY B.S.**  
**DRAWN BY D.W.**

**CHECKED BY C.R.**  
**APPROVED BY R.J.H.**

**ENGINEER'S SEAL**  
**M.C. ROYBOTHAM**  
REGISTERED PROFESSIONAL ENGINEER (2009)

**THE CITY OF WINNIPEG**  
PUBLIC WORKS DEPARTMENT  
ENGINEERING SERVICES DIVISION

**PROJECT TITLE**  
2004 LOCAL STREET RENEWALS

**BURROWS AVE. WEST BOUND**  
ARLINGTON ST. TO MCGREGOR ST.  
STA. 2+50 TO STA. 4+00

**ENGINEERING SERVICES DIVISION**

**APGIN**  
Certificate of Authorization  
KGS Group  
No. 246 Expiry: April 30, 2004

**WARNING**  
IF POWER EQUIPMENT OR EXPOSURES ARE TO BE USED FOR EXCAVATION ON THIS PROJECT THE CONTRACTOR MUST NOTIFY THE GAS COMPANY OF THE PROPOSED LOCATION OF EXCAVATION. 2) TAKE PRECAUTION OF AVOID DAMAGE TO GAS COMPANY'S INSTALLATIONS. REGULATION 210/72 FOR DETAILS.

**PRELIMINARY**  
NOT TO BE USED FOR CONSTRUCTION

**WARNING**

**METRIC**  
WHOLE NUMBERS INDICATE MILLIMETRES  
DECIMALIZED NUMBERS INDICATE METRES

SCALE: 1:250 METRIC A1  
SCALE: 1:500 METRIC A3

**0 5 10 15 20 25m**

**03-107-12**

**02** OF **04**

**COMPUTER FILE NAME**  
03-107-12

**CITY DRAWING NUMBER**