

SUB-DRAIN	SUB-DRAIN	POLES	PROPOSED	EXISTING	PROPOSED	EXISTING	PROPOSED	EXISTING
300 LDS	LAND DRAINAGE SEWER	TEST HOLE	●	○	□	○	□	○
250 WWS	WASTE WATER SEWER	GUY WIRE	—	—	—	—	—	—
150 WWS	GAS	LIGHT STANDARD	—	—	—	—	—	—
150 WWS	HYDRO	BACK OF CURB	—	—	—	—	—	—
150 WWS	M.T.S.	CONCRETE	—	—	—	—	—	—
150 WWS	WATERMAIN	ASPHALT	—	—	—	—	—	—
150 WWS	HYDRANT	SIDEWALK	—	—	—	—	—	—
150 WWS	VALVE	PROPERTY LINE	—	—	—	—	—	—
150 WWS	MANHOLE	SURVEY BAR	—	—	—	—	—	—
150 WWS	CATCH BASIN	GEODEIC BENCHMARK	—	—	—	—	—	—
150 WWS	CURB INLET	ELEVATION	—	—	—	—	—	—
150 WWS	LEGEND-PLAN	LEGEND-PLAN	—	—	—	—	—	—

LOCATION APPROVED UNDERGROUND STRUCTURES

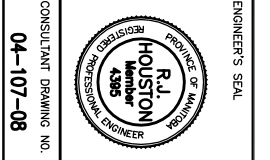
NOTE: LOCATION OF UNDERGROUND STRUCTURES AS SHOWN ON THIS DRAWING IS BASED ON THE INFORMATION AVAILABLE. THE ENGINEER DOES NOT WARRANT OR GUARANTEE THE ACCURACY OF THE LOCATION OF ALL SERVICES SHOWN HEREON. THE USER OF THIS DRAWING SHALL BE RESPONSIBLE FOR VERIFYING THE LOCATION OF ALL SERVICES WITH THE APPROPRIATE AGENCIES BEFORE PROCEEDING WITH CONSTRUCTION.

NO.	REVISIONS	DATE	BY	DATE
0	ISSUED FOR ADJUDICATION	06/04/04	RAH	

KGS CONSULTING ENGINEERS & PROJECT MANAGERS

WINNIPEG, MANITOBA (204) 989-1209
THUNDER BAY (807) 346-2233

DESIGNED BY: C.R.
DRAWN BY: D.W.
CHECKED BY: R.J.H.
APPROVED BY: R.J.H.
HOUR SCALE: 1:250
DATE: WED 21, 2004

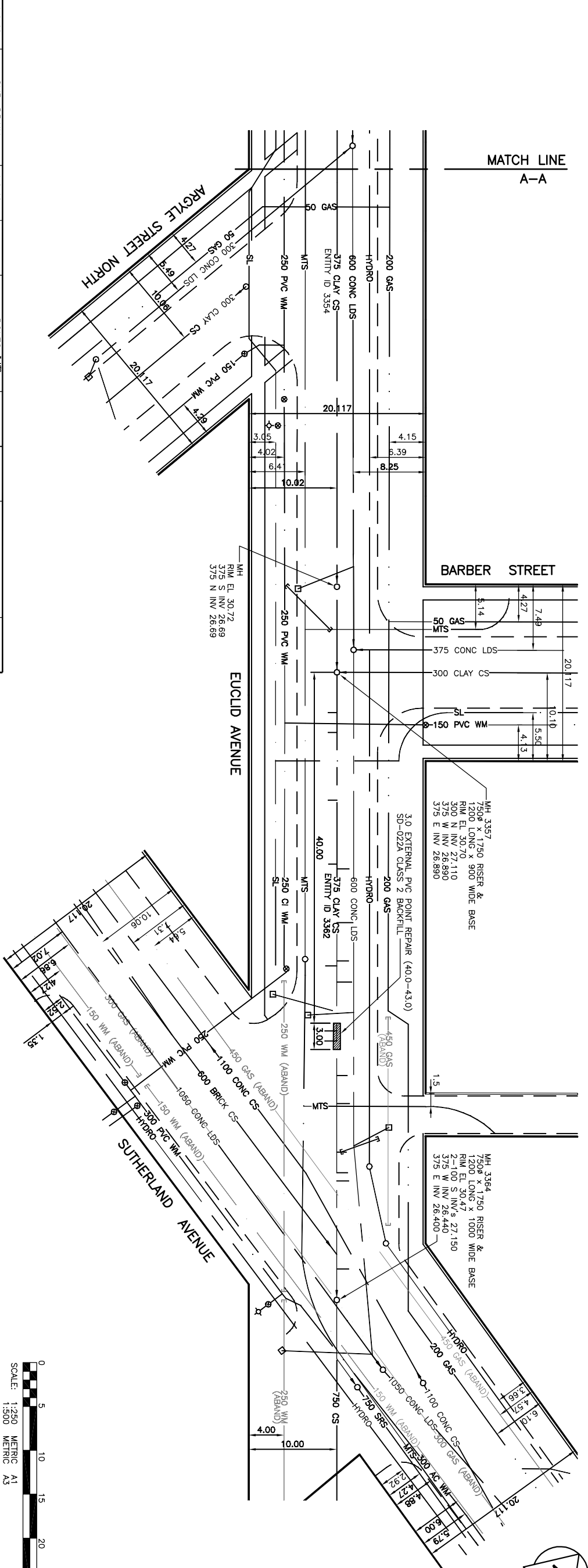
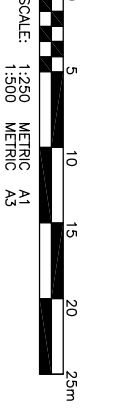


THE CITY OF WINNIPEG PUBLIC WORKS DEPARTMENT ENGINEERING SERVICES DIVISION

PROJECT TITLE: EUCLID AVE.
375 COMBINED SEWER REPAIRS GROVE ST. TO SUTHERLAND AVE.

PROJECT NO: 04-107-08

DATE: APRIL 30, 2004



WARNING

POWER EQUIPMENT OR EXPLOSIVES ARE TO BE USED FOR EXCAVATION ON THIS PROJECT. THE CONTRACTOR SHALL NOTIFY THE GAS COMPANY OF THE PROPOSED LOCATION OF EXCAVATION.

METRIC

WHOLE NUMBERS INDICATE MILLIMETRES
DECIMALIZED NUMBERS INDICATE METRES

