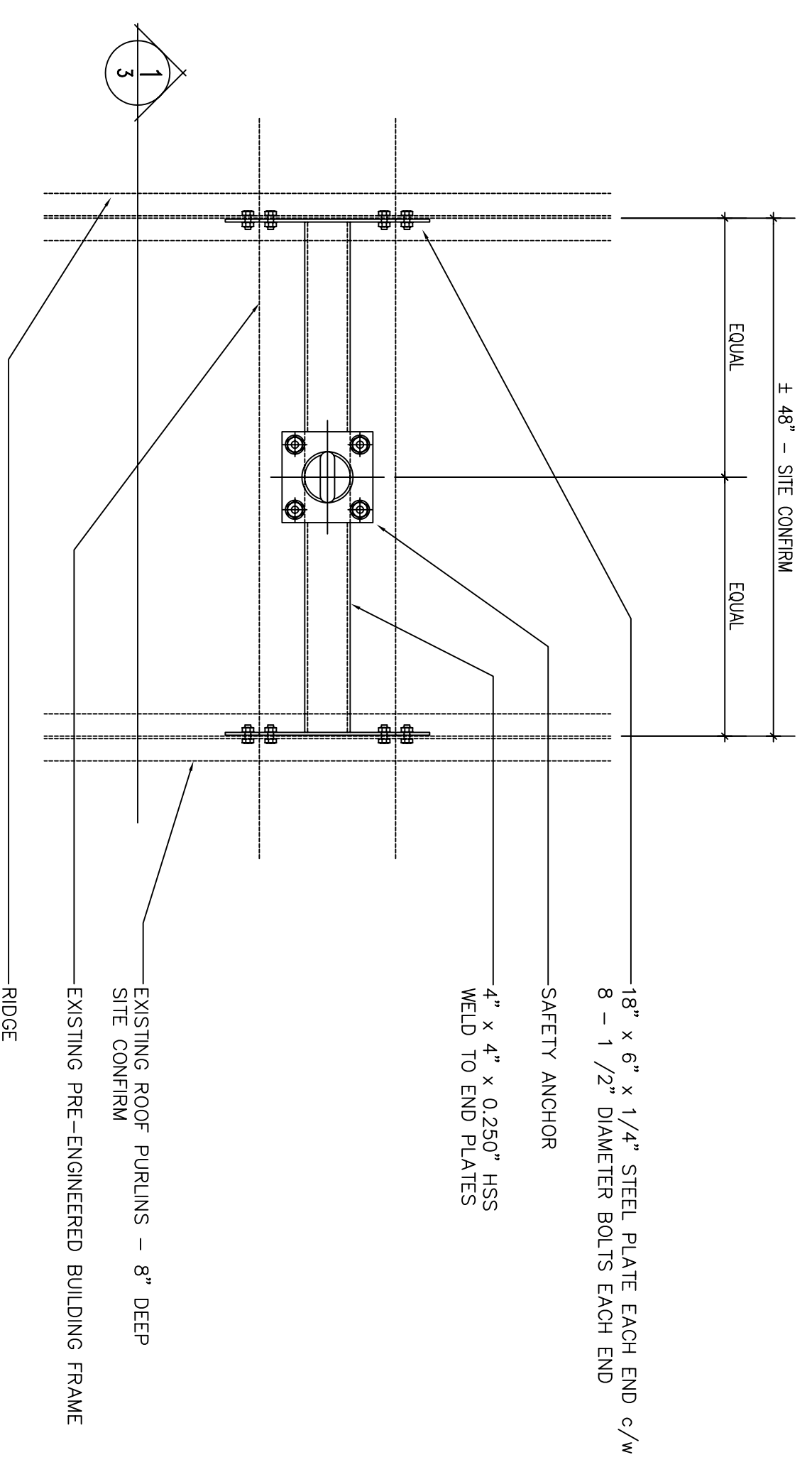
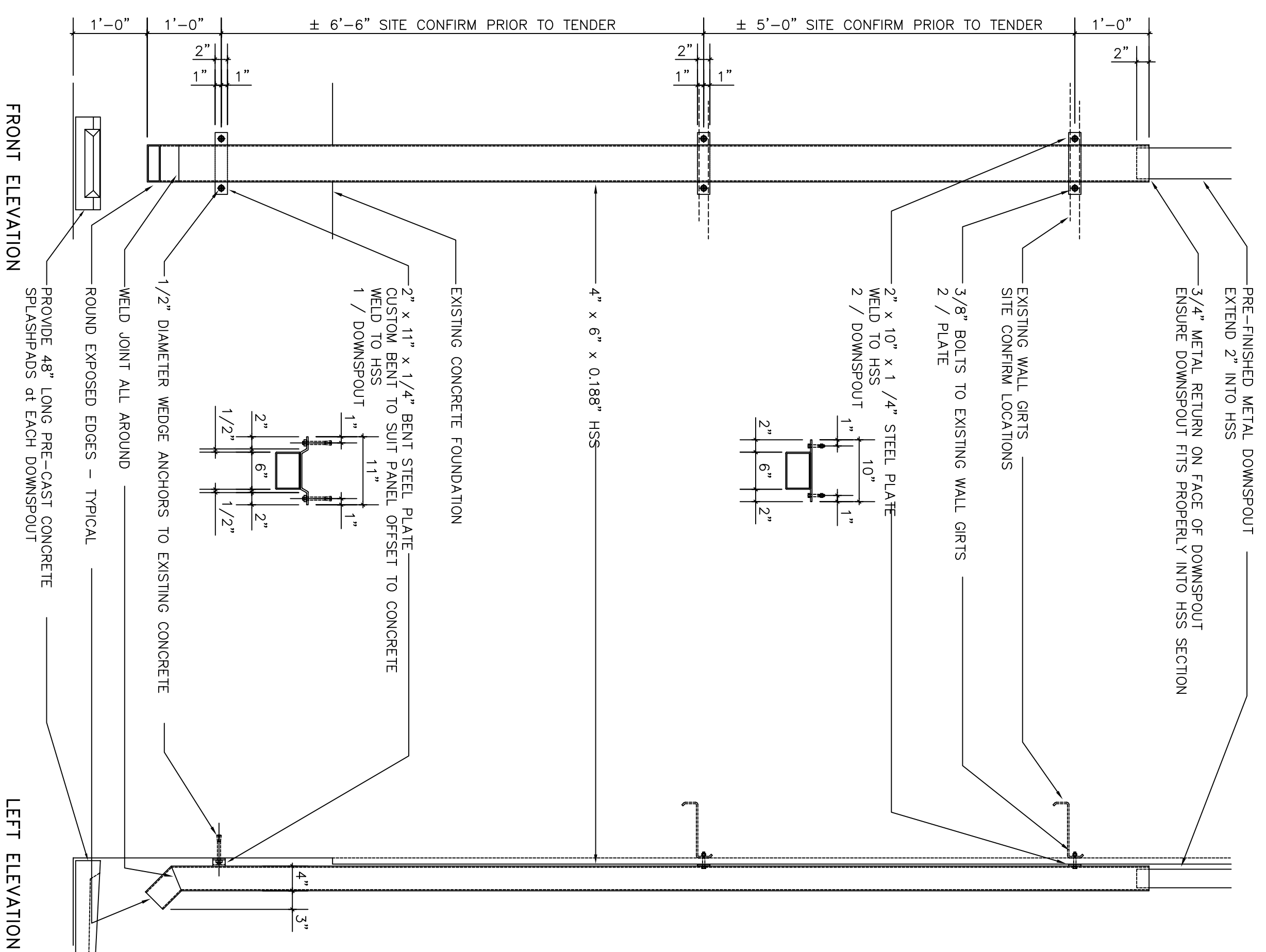


1 SAFETY ANCHOR DETAIL
scale : 3/4" = 1'-0"



A SAFETY ANCHOR PLAN DETAIL
scale : 1" = 1'-0"



B STRUCTURAL DOWNSPIPE DETAILS
scale : 3/4" = 1'-0"

no.	description	by	date
1	ISSUED FOR		

C W ENGINEERING LTD.
CONSULTING STRUCTURAL ENGINEERS
102 - 611 COMMON AVE. WINNIPEG, MANITOBA
R2L 0P3 Tel: (204) 943 - 4425 Fax: (204) 942 - 2221

Project: OXFORD HEIGHTS COMMUNITY CLUB
GYMNASIUM ROOF REPLACEMENT
359 DOWLING AVENUE, WINNIPEG, MANITOBA

Roof Anchor Details
Structural Downpipe Details

File: 2003-18
Date: NOV. / 2003
Drawn: gpe

