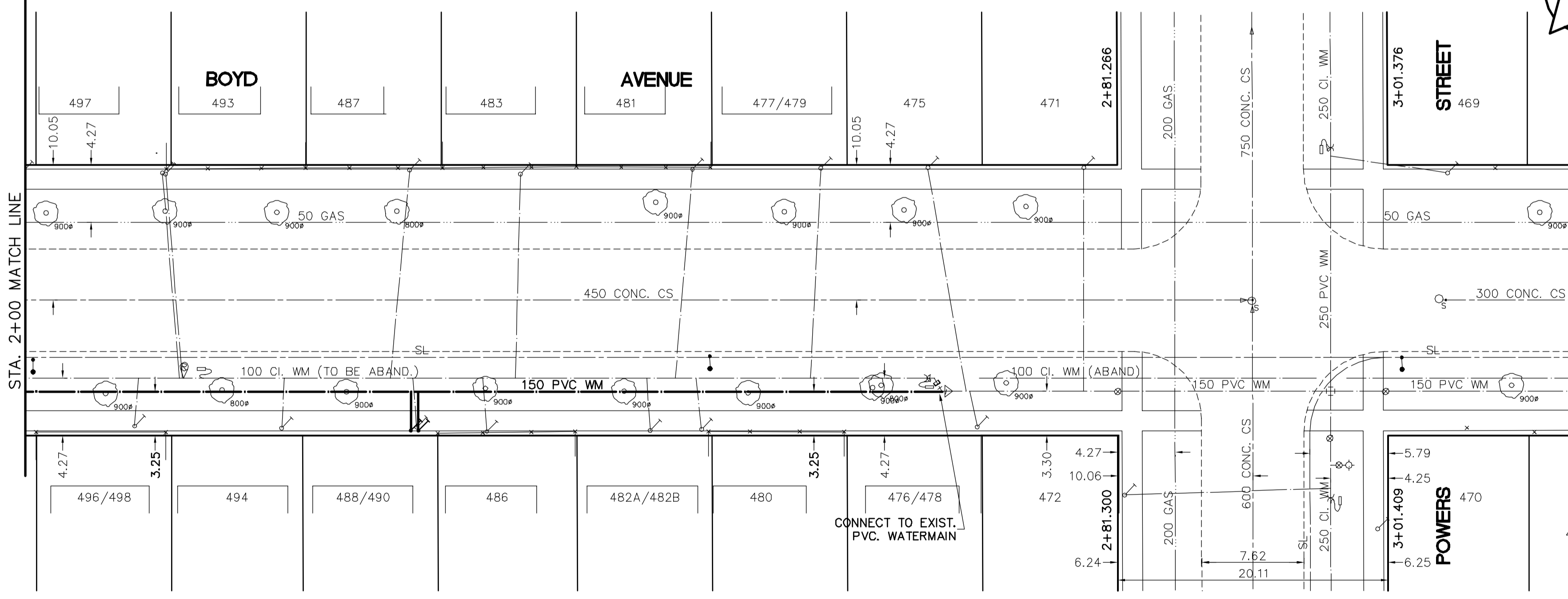
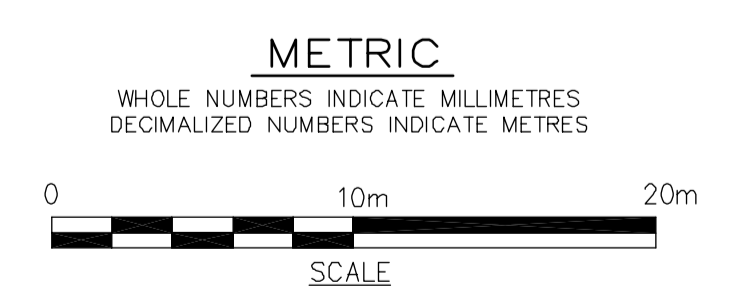


ADDRESS/ RESIDENTIAL	SIZE/ MATERIAL	DIST. TO PROP.	POSITION OF S.C. (curb stop)	POSITION OF C.C. (corp)	COMMENTS:
498 BOYD AV RESIDENTIAL	COPPER 19 mm	0.5 m	Long: 21.0 m E of TST HYDRANT W of POWERS Short: 2.1 m E of WL HOUSE	Long:	
497 BOYD AV RESIDENTIAL	COPPER 19 mm	0.3 m	Long: 71.0 m W of WL POWERS Short: 2.4 m E of EL HOUSE	Short: 0.3 m W of SC	BRANCH WITH 493
496 BOYD AV RESIDENTIAL	COPPER 19 mm	0.5 m	Long: 73.5 m W of WL POWERS Short: 1.2 m W of EL HOUSE	Long:	RENEWED 1959
494 BOYD AV RESIDENTIAL	COPPER 19 mm	0.6 m	Long: 62.0 m W of WL POWERS Short: 0.3 m W of EL HOUSE	Long:	
493 BOYD AV RESIDENTIAL	COPPER 19 mm	0.3 m	Long: 71.0 m W of WL POWERS Short: 0.3 m W of WL HOUSE	Short: OPP of SC	BRANCH WITH 497.
488 BOYD AV RESIDENTIAL	LEAD 16 mm	0.6 m	Long: 52.4 m W of WL POWERS Short: 0.3 m E of EL HOUSE	Long:	BRANCH WITH 490 RENEW TO PROPERTY
487 BOYD AV RESIDENTIAL	COPPER 19 mm	0.5 m	Long: 52.4 m W of WL POWERS Short: 1.7 m E of EL HOUSE	Short: 1.7 m W of SC	REVERSE TAP
486 BOYD AV RESIDENTIAL	COPPER 13 mm	0.3 m	Long: 47.2 m W of WL POWERS Short: 0.6 m W of EL HOUSE	Short: OPP of SC	
483 BOYD AV RESIDENTIAL	COPPER 19 mm	0.5 m	Long: 44.8 m W of WL POWERS Short: 1.4 m W of EL HOUSE	Long:	SERV RENEWED 1976
482 BOYD AV NOT IN USE	COPPER 19 mm	0.6 m	Long: 31.4 m W of WL POWERS Short: 0.3 m E of EL HOUSE	Long:	BRANCH W/ 480
482 BOYD AV RESIDENTIAL	COPPER 19 mm	0.6 m	Long: 35.1 m W of WL POWERS Short: 3.8 m W of EL HOUSE	Short: OPP of SC	REV TAP
481 BOYD AV RESIDENTIAL	COPPER 19 mm	0.5 m	Long: 32.0 m W of WL POWERS Short: 1.7 m E of EL HOUSE 482	Long:	SERV RENEWED 1963
480 BOYD AV RESIDENTIAL	COPPER 19 mm	0.6 m	Long: 31.4 m W of WL POWERS Short: 0.3 m E of EL HOUSE 482	Short: OPP of SC	
479 BOYD AV RESIDENTIAL	COPPER 19 mm		Long:	Short:	METER W/477 BOYD
477 BOYD AV RESIDENTIAL	COPPER 19 mm	0.3 m	Long: 22.3 m W of WL POWERS Short: 0.8 m W of EL HOUSE	Long:	
476 BOYD AV RESIDENTIAL	COPPER 19 mm	0.6 m	Long: 10.4 m W of WL POWERS Short: 1.5 m W of EL HOUSE	Long:	
475 BOYD AV RESIDENTIAL	COPPER 19 mm	0.4 m	Long: 14.3 m W of WL POWERS Short: 1.3 m W of EL HOUSE	Long:	CONN TO WM 06/94.
472 BOYD AV NOT IN USE	LEAD 13 mm	0.3 m	Long: 20.1 m S of SL BOYD Short: 5.2 m S of SL BUILDING	Long:	
472 BOYD AV RESIDENTIAL	COPPER 19 mm	0.3 m	Long: 4.0 m S of SL BOYD Short: 4.9 m S of SL BOYD	Long:	
471 BOYD AV RESIDENTIAL	COPPER 19 mm	0.4 m	Long: 2.4 m W of WL POWERS Short: 2.4 m W of EL HOUSE	Long:	



- CONSTRUCTION NOTES**
- EXPOSE WATERMAIN CONNECTIONS AND CONFIRM INVERTS PRIOR TO CONSTRUCTION.
 - INSTALL WATERMAIN BY TRENCHLESS METHODS.
 - ALL MATERIALS SHALL CONFORM TO THE CITY OF WINNIPEG STANDARD CONSTRUCTION SPECIFICATIONS.
 - MINIMUM COVER TO TOP OF PROPOSED WATERMAIN SHALL BE 2.5m FROM STREET CENTERLINE.
 - INSTALL ALL HYDRANTS WITH FLANGE ELEVATION 50mm- 150mm ABOVE FINISHED GRADE.
 - REPLACE ALL EXISTING LEAD SERVICES FROM THE PROPOSED WATERMAIN TO PROPERTY LINE.
 - NOTIFY ALL AFFECTED RESIDENTS AND BUSINESSES 24 HOURS IN ADVANCE OF ANY WATER SHUTDOWN OR DISRUPTION OF SERVICE.
 - LOCATION OF PREVIOUS WATERMAIN BREAKS SHOWN THUS (X) IS APPROXIMATE AND FOR INFORMATION ONLY. NO GUARANTEE IS GIVEN TO THE COMPLETENESS OR ACCURACY OF THIS INFORMATION.
 - LOCATION OF WATER SERVICES SHOWN ON DRAWINGS ARE APPROXIMATE. THE CONTRACTOR SHALL FIELD LOCATE ALL WATER SERVICES PRIOR TO CONSTRUCTION.
 - ALL VALVES SHALL BE RED TOP (COUNTER CLOCKWISE TO CLOSE).
 - BACKFILL UNDER OR WITHIN 1.0m OF PAVEMENTS, INCLUDING SIDEWALKS SHALL BE CLASS 3 BACKFILL EXCEPT AS NOTED. BACKFILL IN BOULEVARDS SHALL BE CLASS 5 BACKFILL.



APEGM
Certificate of Authorization
Earth Tech Canada Inc.
No. 730 Expiry: April 30, 2004

150 mm W.M.	WATERMAIN	150 mm W.M.	HYDRO	150 mm W.M.	WATERMAIN
⊕	HYDRANT	⊕	TELEPHONE	⊕	HYDRANT
⊙	VALVE	⊙	CONCRETE	⊙	VALVE
300mm L.O.S.	LAND DRAINAGE SEWER	300mm L.O.S.	ASPHALT	300mm L.O.S.	LAND DRAINAGE SEWER
250mm W.W.S.	WASTE WATER SEWER	250mm W.W.S.	PROPERTY LINE	250mm W.W.S.	WASTE WATER SEWER
○	MANHOLE	○	SURVEY BAR	○	PROFILE
□	CATCH BASIN	□	CURB STOP	□	
▽	CURB INLET	▽	TREE	▽	
+	JUNCTIONS	+	ANODE	+	
—	CULVERT	—	CONCRETE SIDEWALK	—	
—	GAS	—	FENCE	—	

EXISTING LEGEND - PLAN **PROPOSED** **EXISTING LEGEND - PROFILE** **PROPOSED**

LOCATION APPROVED UNDERGROUND STRUCTURES

SUPV. U/G STRUCTURES COMMITTEE DATE

NOTE:
LOCATION OF UNDERGROUND STRUCTURES AS SHOWN ARE BASED ON THE BEST INFORMATION AVAILABLE, BUT NO GUARANTEE IS GIVEN THAT ALL EXISTING UTILITIES ARE SHOWN OR THAT THE GIVEN LOCATIONS ARE EXACT. CONFIRMATION OF EXISTENCE AND EXACT LOCATION OF ALL SERVICES MUST BE OBTAINED FROM THE INDIVIDUAL UTILITIES BEFORE PROCEEDING WITH CONSTRUCTION.

B.M. 26-027 E. SIDE MCGREGOR ST. S. OF MOUNTAIN AVE., TBLT. IN W. CONC. FOUNDATION OF Y.M.C.A. BLDG. 1m S. & 0.8m BELOW BRICK OF MOST N.W. COR. OF BLDG.
ELEV. 231.813

DESIGNED BY	GSK	CHECKED BY	GSK
DRAWN BY	GDL	APPROVED BY	
HOR. SCALE:	1:250	RELEASED FOR CONSTRUCTION BY:	K.R. ZUREK
VERTICAL SCALE:	1:50	DATE	APRIL 27, 2004
ISSUED FOR TENDER	2004/4/27	DATE	2004/03/01
NO. REVISIONS		DATE	

EARTH TECH
ATYCO INTERNATIONAL LTD. COMPANY
Earth Tech (Canada) Inc. Winnipeg, Manitoba 204.477.5381

DESIGNED BY: GSK CHECKED BY: GSK
DRAWN BY: GDL APPROVED BY: [Signature]

HOR. SCALE: 1:250 RELEASED FOR CONSTRUCTION BY: K.R. ZUREK
VERTICAL SCALE: 1:50 DATE: APRIL 27, 2004

ENGINEER'S SEAL
ORIGINAL SIGNED BY
J. E. HUTCHISON
2004/04/27
CONSULTANT DRAWING NO.
76531-C15

THE CITY OF WINNIPEG
Winnipeg WATER AND WASTE DEPARTMENT

WATERMAIN RENEWALS
CONTRACT No. 5

BOYD AVENUE
ANDREWS STREET TO POWERS STREET
STATION 1+90 TO POWERS STREET

SHEET OF 15 OF 19
CITY DRAWING NUMBER D-8540