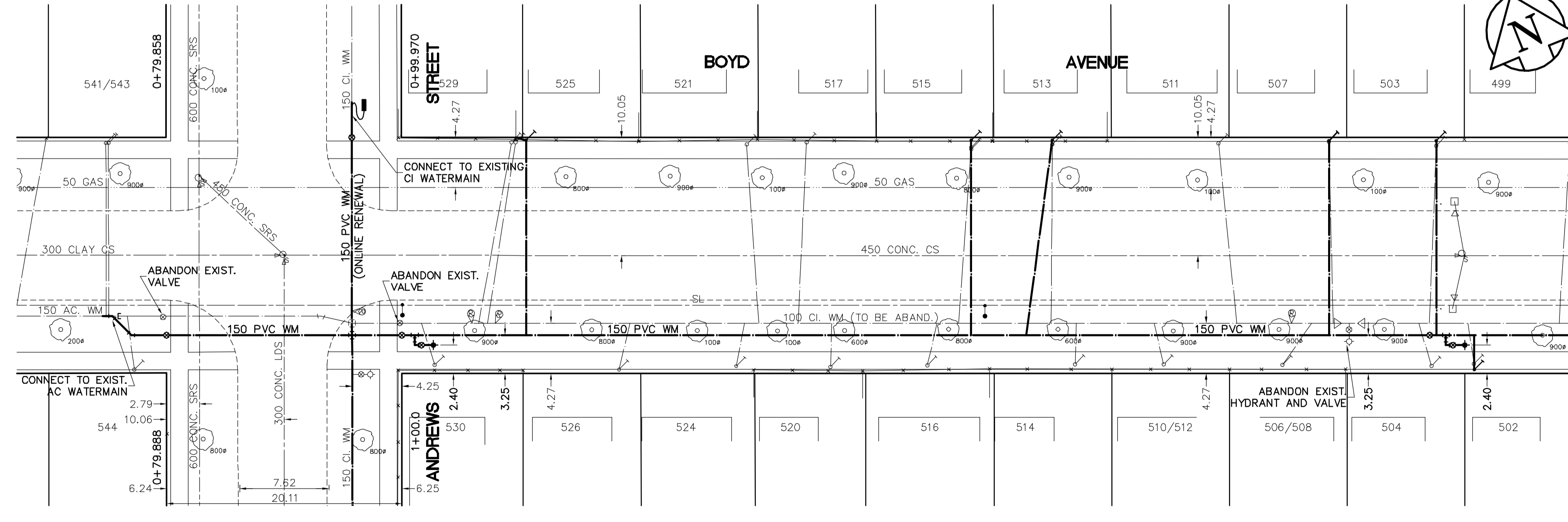
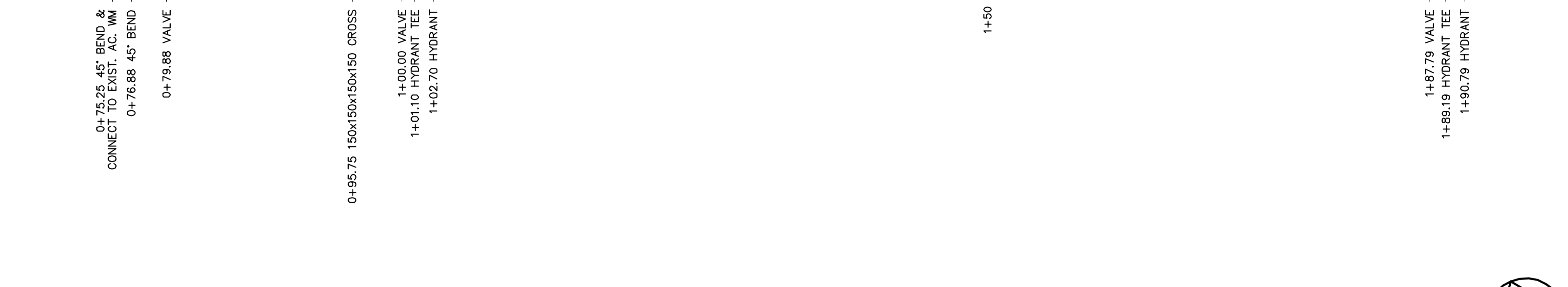
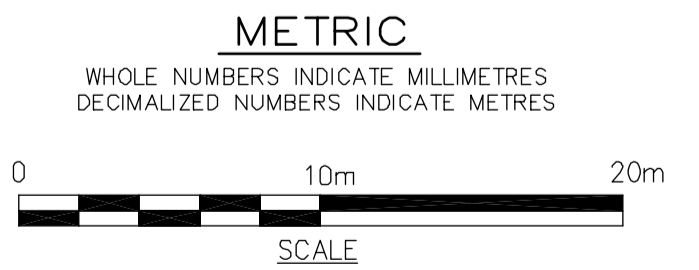


ADDRESS / RESIDENTIAL	SIZE / MATERIAL	DIST. TO PROP.	POSITION OF S.C. (curb stop)	POSITION OF C.C. (corp)	COMMENTS:
544 BOYD AV	COPPER	0.3 m	Long: 2.4 m W of WL ANDREWS	Long:	HYDRO STRAP CONNECT
RESIDENTIAL	19 mm		Short: 3.4 m W of EL HOUSE	Long: 0.9 m W of SC	
543 BOYD AV	COPPER	0.3 m	Long: 4.9 m W of WL ANDREWS	Long:	BRANCH SERV WITH 541
RESIDENTIAL	19 mm		Short: 4.5 m W of EL HOUSE	Short: OPP of SC	
541 BOYD AV	COPPER	0.3 m	Long: 4.9 m W of WL ANDREWS	Long:	BRANCH SERV WITH 543
RESIDENTIAL	16 mm		Short: 4.1 m W of EL HOUSE	Short: OPP of 543 BOYD	
530 BOYD AV	COPPER	0.8 m	Long: 2.6 m E of EL ANDREWS	Long:	SERV RENEWED 1961
RESIDENTIAL	19 mm		Short: 1.8 m E of WL HOUSE	Long: 0.9 m W of SC	
529 BOYD AV	COPPER	0.5 m	Long: 9.6 m E of EL ANDREWS	Long:	BRANCH SERV 525
RESIDENTIAL	19 mm		Short: 0.9 m E of EL HOUSE	Short: 3.0 m W of SC	
526 BOYD AV	COPPER	0.4 m	Long: 18.6 m E of EL ANDREWS	Long:	RENEWED 1970
RESIDENTIAL	19 mm		Short: 0.3 m W of EL HOUSE	Short: 0.9 m E of SC	
525 BOYD AV	LEAD	0.5 m	Long: 11.1 m E of EL ANDREWS	Long:	BRANCH SERV WITH 529.
RESIDENTIAL	19 mm		Short: 0.9 m W of EL HOUSE	Short: 3.8 m W of SC	RENEW TO PROPERTY
524 BOYD AV	COPPER	0.3 m	Long: 1.2 m W of EPL OF 524	Long:	CONN. SERVICE, TO CI MAIN
RESIDENTIAL	19 mm		Short: 1.4 m E of EL HOUSE	Short: 0.3 m E of SC	
521 BOYD AV	COPPER	0.3 m	Long: 29.9 m E of EL ANDREWS	Long:	SERV RENEWED 1969
RESIDENTIAL	19 mm		Short: 1.4 m E of EL HOUSE	Short: 0.6 m E of SC	
520 BOYD AV	COPPER	0.3 m	Long: 36.7 m E of EL ANDREWS	Long:	RENEWED NOV 1970
RESIDENTIAL	19 mm		Short: 1.1 m E of EL HOUSE	Short:	
517 BOYD AV	COPPER	0.3 m	Long: 35.4 m E of EL ANDREWS	Long:	RENEWED 1969
RESIDENTIAL	19 mm		Short: 0.3 m E of WL HOUSE	Short: 1.5 m W of SC	
516 BOYD AV	COPPER	0.5 m	Long: 45.7 m E of EL ANDREWS	Long:	
RESIDENTIAL	19 mm		Short: 4.3 m E of WL HOUSE	Short: OPP of SC	
515 BOYD AV	LEAD	0.5 m	Long: 48.5 m E of EL ANDREWS	Long:	RENEW TO PROPERTY
RESIDENTIAL	13 mm		Short: 1.1 m E of EL HOUSE	Short: 0.9 m W of SC	
514 BOYD AV	COPPER	0.5 m	Long: 57.9 m E of EL ANDREWS	Long:	RENEWED 1969
RESIDENTIAL	19 mm		Short: 1.7 m E of EL HOUSE	Short: 0.3 m W of SC	
513 BOYD AV	LEAD	0.3 m	Long: 56.1 m E of EL ANDREWS	Long:	RENEW TO PROPERTY
RESIDENTIAL	13 mm		Short: 1.8 m W of EL HOUSE	Short: 0.6 m W of SC	
512 BOYD AV	COPPER		Long: 65.1 m E of EL ANDREWS	Long:	DOUBLE WITH 510
RESIDENTIAL	19 mm		Short: 3.8 m E of WL HOUSE	Short: 1.3 m W of PF SC	
511 BOYD AV	COPPER		Long: 70.4 m E of EL ANDREWS	Long:	
RESIDENTIAL	19 mm		Short: W of WL HOUSE	Short: 0.9 m E of SC	
510 BOYD AV	COPPER		Long: 65.5 m E of EL ANDREWS	Long:	DOUBLE WITH 512
RESIDENTIAL	19 mm		Short: 4.6 m W of EL HOUSE	Short: 1.1 m W of SC	
508 BOYD AV	COPPER		Long: 75.6 m E of EL ANDREWS	Long:	
RESIDENTIAL	19 mm		Short: 4.1 m E of WL HOUSE	Short: 2.1 m E of SC	
507 BOYD AV	LEAD	0.3 m	Long: 78.9 m E of EL ANDREWS	Long:	RENEW TO PROPERTY
RESIDENTIAL	13 mm		Short: 1.8 m E of EL HOUSE	Short: 0.6 m E of SC	
506 BOYD AV	COPPER		Long: 75.9 m E of EL ANDREWS	Long:	
RESIDENTIAL	19 mm		Short: 4.0 m W of EL HOUSE	Short: 2.4 m E of SC	
504 BOYD AV	COPPER	0.5 m	Long: 88.1 m E of EL ANDREWS	Long:	
RESIDENTIAL	19 mm		Short: 0.7 m E of EL HOUSE	Short: 1.2 m W of SC	
503 BOYD AV	LEAD	0.3 m	Long: 86.9 m E of EL ANDREWS	Long:	VA C FEB 6 85
RESIDENTIAL	19 mm		Short: 0.9 m E of EL HOUSE	Short: 0.9 m E of SC	RENEW TO PROPERTY
502 BOYD AV	LEAD	0.3 m	Long: 90.5 m E of EL POWERS	Long:	RENEW TO PROPERTY
RESIDENTIAL	19 mm		Short: 0.3 m E of WL HOUSE	Short: 0.3 m E of SC	
499 BOYD AV	COPPER	0.3 m	Long: 81.5 m W of EL POWERS	Long:	REVERSE TAP
RESIDENTIAL	19 mm		Short: 2.7 m E of EL HOUSE	Short: 0.9 m W of SC	



- CONSTRUCTION NOTES**
- EXPOSE WATERMAIN CONNECTIONS AND CONFIRM INVERTS PRIOR TO CONSTRUCTION.
 - INSTALL WATERMAIN BY TRENCHLESS METHODS.
 - ALL MATERIALS SHALL CONFORM TO THE CITY OF WINNIPEG STANDARD CONSTRUCTION SPECIFICATIONS.
 - MINIMUM COVER TO TOP OF PROPOSED WATERMAIN SHALL BE 2.5m FROM STREET CENTERLINE.
 - INSTALL ALL HYDRANTS WITH FLANGE ELEVATION 50mm - 150mm ABOVE FINISHED GRADE.
 - REPLACE ALL EXISTING LEAD SERVICES FROM THE PROPOSED WATERMAIN TO PROPERTY LINE.
 - NOTIFY ALL AFFECTED RESIDENTS AND BUSINESSES 24 HOURS IN ADVANCE OF ANY WATER SHUTDOWN OR DISRUPTION OF SERVICE.
 - LOCATION OF PREVIOUS WATERMAIN BREAKS SHOWN THUS ⊕ IS APPROXIMATE AND FOR INFORMATION ONLY. NO GUARANTEE IS GIVEN TO THE COMPLETENESS OR ACCURACY OF THIS INFORMATION.
 - LOCATION OF WATER SERVICES SHOWN ON DRAWINGS ARE APPROXIMATE. THE CONTRACTOR SHALL FIELD LOCATE ALL WATER SERVICES PRIOR TO CONSTRUCTION.
 - ALL VALVES SHALL BE RED TOP (COUNTER CLOCKWISE TO CLOSE).
 - BACKFILL UNDER OR WITHIN 1.0m OF PAVEMENTS, INCLUDING SIDEWALKS SHALL BE CLASS 3 BACKFILL EXCEPT AS NOTED. BACKFILL IN BOULEVARDS SHALL BE CLASS 5 BACKFILL.



APEGM
 Certificate of Authorization
 Earth Tech Canada Inc.
 No. 730 Expiry: April 30, 2004

150 mm W.M.	150 mm W.M.	HYDRO	150 mm W.M.	WATERMAIN
⊕	⊕	TELEPHONE	⊕	HYDRANT
⊕	⊕	CONCRETE	⊕	VALVE
⊕	⊕	ASPHALT	⊕	VALVE
⊕	⊕	PROPERTY LINE	⊕	VALVE
⊕	⊕	SURVEY BAR	⊕	VALVE
⊕	⊕	CURB STOP	⊕	VALVE
⊕	⊕	TREE	⊕	VALVE
⊕	⊕	ANODE	⊕	VALVE
⊕	⊕	CONCRETE SIDEWALK	⊕	VALVE
⊕	⊕	FENCE	⊕	VALVE
⊕	⊕		⊕	VALVE

LOCATION APPROVED UNDERGROUND STRUCTURES

SUPV. U/G STRUCTURES DATE COMMITTEE

NOTE:
 LOCATION OF UNDERGROUND STRUCTURES AS SHOWN ARE BASED ON THE BEST INFORMATION AVAILABLE, BUT NO GUARANTEE IS GIVEN THAT ALL EXISTING UTILITIES ARE SHOWN OR THAT THE GIVEN LOCATIONS ARE EXACT. CONFIRMATION OF EXISTENCE AND EXACT LOCATION OF ALL SERVICES MUST BE OBTAINED FROM THE INDIVIDUAL UTILITIES BEFORE PROCEEDING WITH CONSTRUCTION.

B.M. 26-027 E. SIDE MCGREGOR ST. S. OF MOUNTAIN AVE., TBLT. IN W. CONC. FOUNDATION OF Y.M.C.A. BLDG. 1m S. & 0.8m BELOW BRICK OF MOST N.W. COR. OF BLDG.
 ELEV. 231.813

NO.	ISSUED FOR TENDER	DATE	BY
0	2004/4/27	GSK	

EARTH TECH
 atyco INTERNATIONAL LTD. COMPANY
 Earth Tech (Canada) Inc. Winnipeg, Manitoba 204.477.5981

DESIGNED BY GSK CHECKED BY GSK
 DRAWN BY GDL APPROVED BY
 HOR. SCALE: 1:250 RELEASED FOR CONSTRUCTION BY:
 VERTICAL SCALE: 1:50 K.R. ZUREK
 04/27/2004 DATE APRIL 27, 2004

ENGINEER'S SEAL
 ORIGINAL SIGNED BY J. E. HUTCHISON 2004/04/27
 CONSULTANT DRAWING NO. 76531-C14

THE CITY OF WINNIPEG
 Winnipeg WATER AND WASTE DEPARTMENT

WATERMAIN RENEWALS
 CONTRACT No. 5

BOYD AVENUE
 ANDREWS STREET TO POWERS STREET
 ANDREWS STREET TO STATION 1+90

SHEET 14 OF 19
 CITY DRAWING NUMBER D-8539