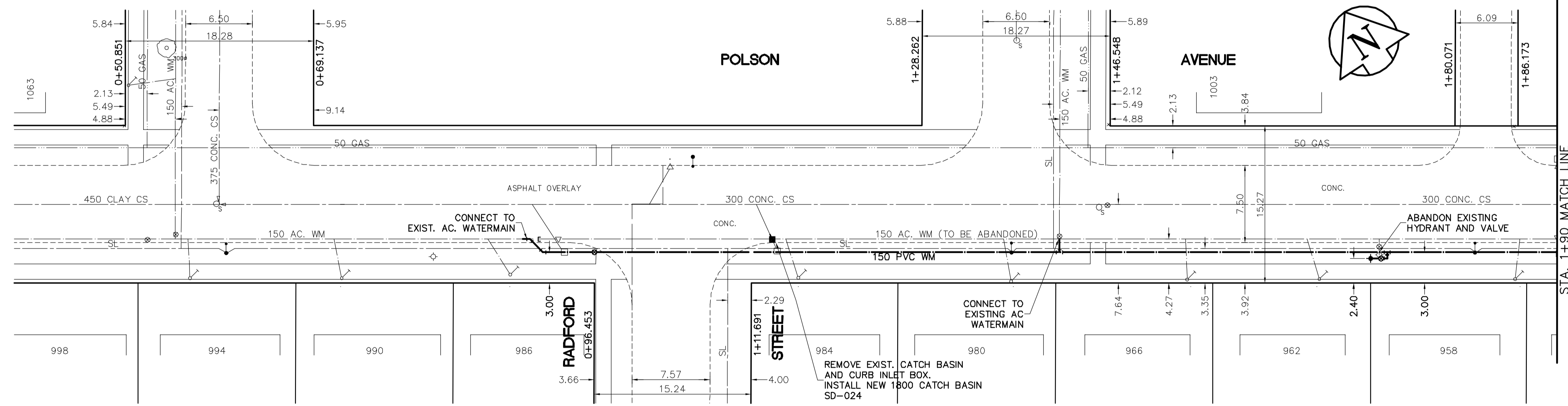


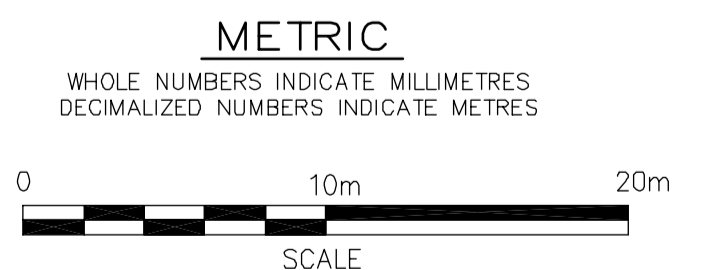
- CONSTRUCTION NOTES**
1. EXPOSE WATERMAIN CONNECTIONS AND CONFIRM INVERTS PRIOR TO CONSTRUCTION.
  2. INSTALL WATERMAIN BY TRENCHLESS METHODS.
  3. ALL MATERIALS SHALL CONFORM TO THE CITY OF WINNIPEG STANDARD CONSTRUCTION SPECIFICATIONS.
  4. MINIMUM COVER TO TOP OF PROPOSED WATERMAIN SHALL BE 2.5m FROM STREET CENTERLINE.
  5. INSTALL ALL HYDRANTS WITH FLANGE ELEVATION 50mm - 150mm ABOVE FINISHED GRADE.
  6. REPLACE ALL EXISTING LEAD SERVICES FROM THE PROPOSED WATERMAIN TO PROPERTY LINE.
  7. NOTIFY ALL AFFECTED RESIDENTS AND BUSINESSES 24 HOURS IN ADVANCE OF ANY WATER SHUTDOWN OR DISRUPTION OF SERVICE.
  8. LOCATION OF PREVIOUS WATERMAIN BREAKS SHOWN THUS IS APPROXIMATE AND FOR INFORMATION ONLY. NO GUARANTEE IS GIVEN TO THE COMPLETENESS OR ACCURACY OF THIS INFORMATION.
  9. LOCATION OF WATER SERVICES SHOWN ON DRAWINGS ARE APPROXIMATE. THE CONTRACTOR SHALL FIELD LOCATE ALL WATER SERVICES PRIOR TO CONSTRUCTION.
  10. ALL VALVES SHALL BE RED TOP (COUNTER CLOCKWISE TO CLOSE).
  11. BACKFILL UNDER OR WITHIN 1.0m OF PAVEMENTS, INCLUDING SIDEWALKS SHALL BE CLASS 2 BACKFILL EXCEPT AS NOTED. BACKFILL IN BOULEVARDS SHALL BE CLASS 4 BACKFILL.



**APEGM**  
 Certificate of Authorization  
 Earth Tech Canada Inc.  
 No. 730 Expiry: April 30, 2004

ADDRESS/ NATURE OF SERVICES	SIZE/ MATERIAL	DIST. TO PROP.	POSITION OF S.C. (curb stop)	POSITION OF C.C. (corp)	COMMENTS:
984 POLSON AV RESIDENTIAL	COPPER 19 mm	0.5 m	Long: 4.6 m E of EL RADFORD Short: 2.9 m E of WL BUILDING	Long: Short: 1.2 m W of SC	
986 POLSON AV RESIDENTIAL	COPPER 19 mm	0.5 m	Long: 8.2 m W of WL RADFORD Short: 4.6 m E of WL BUILDING	Long: Short: 2.1 m W of SC	CPLG 5 IN ON PROP
990 POLSON AV RESIDENTIAL	COPPER 19 mm	0.5 m	Long: 24.7 m W of WL RADFORD Short: 2.1 m E of WL HOUSE	Long: Short: 0.6 m W of SC	
994 POLSON AV RESIDENTIAL	COPPER 19 mm	0.5 m	Long: 39.5 m W of WL RADFORD Short: 3.4 m E of WL HOUSE	Long: Short: OPP of SC	

ADDRESS/ NATURE OF SERVICES	SIZE/ MATERIAL	DIST. TO PROP.	POSITION OF S.C. (curb stop)	POSITION OF C.C. (corp)	COMMENTS:
958 POLSON AV RESIDENTIAL	COPPER 19 mm	0.5 m	Long: 74.7 m E of EL RADFORD Short: 0.9 m E of EL HOUSE	Long: Short: OPP of SC	CPLG 3 IN FR SC
962 POLSON AV RESIDENTIAL	COPPER 19 mm	0.5 m	Long: 25.3 m E of EL RADFORD Short: 2.3 m W of EL HOUSE	Long: Short: 0.9 m W of SC	
966 POLSON AV RESIDENTIAL	COPPER 19 mm	0.5 m	Long: 42.7 m E of EL RADFORD Short: of EL HOUSE	Long: Short: 0.5 m W of SC	
980 POLSON AV RESIDENTIAL	COPPER 19 mm	0.5 m	Long: 25.5 m E of EL RADFORD Short: 2.3 m W of EL HOUSE	Long: Short: 0.9 m W of SC	



EXISTING	LEGEND - PLAN	PROPOSED	EXISTING	LEGEND - PROFILE	PROPOSED
150 mm W.M.	WATERMAIN	150 mm W.M.	Hydro	Hydro	Hydro
Hydrant	Hydrant	Hydrant	Telephone	Telephone	Telephone
Valve	Valve	Valve	Concrete	Concrete	Concrete
300mm L.D.S.	LAND DRAINAGE SEWER	300mm L.D.S.	Asphalt	Asphalt	Asphalt
250mm W.W.S.	WASTEWATER SEWER	250mm W.W.S.	Property Line	Property Line	Property Line
Manhole	Manhole	Manhole	Survey Bar	Survey Bar	Survey Bar
Catch Basin	Catch Basin	Catch Basin	Curb Stop	Curb Stop	Curb Stop
Curb Inlet	Curb Inlet	Curb Inlet	Tree	Tree	Tree
Junctions	Junctions	Junctions	Anode	Anode	Anode
Culvert	Culvert	Culvert	Concrete Sidewalk	Concrete Sidewalk	Concrete Sidewalk
Gas	Gas	Gas	Fence	Fence	Fence

**LOCATION APPROVED UNDERGROUND STRUCTURES**

NOTE:  
 LOCATION OF UNDERGROUND STRUCTURES AS SHOWN ARE BASED ON THE BEST INFORMATION AVAILABLE, BUT NO GUARANTEE IS GIVEN THAT ALL EXISTING UTILITIES ARE SHOWN OR THAT THE GIVEN LOCATIONS ARE EXACT. CONFIRMATION OF EXISTENCE AND EXACT LOCATION OF ALL SERVICES MUST BE OBTAINED FROM THE INDIVIDUAL UTILITIES BEFORE PROCEEDING WITH CONSTRUCTION.

B.M. ELEV.	25-001	231.460
BOLT IN 4.6m CONC. PIPE, 0.3m N. OF N. LINE OF INKSTER BLVD. & 2.4m E. OF W. LINE OF AIRLES ST.		
DESIGNED BY	GSK	CHECKED BY GSK
DRAWN BY	GDL	APPROVED BY
HOR. SCALE:	1:250	RELEASED FOR CONSTRUCTION BY:
VERTICAL SCALE:	1:50	K.R. ZUREK
ISSUED FOR TENDER	2004/4/27	DATE
NO. REVISIONS	DATE	BY

**EARTH TECH**  
 atyco INTERNATIONAL LTD. COMPANY  
 Earth Tech (Canada) Inc. Winnipeg, Manitoba 204.477.5381

DESIGNED BY GSK CHECKED BY GSK  
 DRAWN BY GDL APPROVED BY  
 HOR. SCALE: 1:250 VERTICAL SCALE: 1:50  
 RELEASED FOR CONSTRUCTION BY: K.R. ZUREK  
 DATE: 2004/03/01 DATE: APRIL 27, 2004

ENGINEER'S SEAL  
 ORIGINAL SIGNED BY J. E. HUTCHISON 2004/04/27  
 CONSULTANT DRAWING NO. 76531-C01

**THE CITY OF WINNIPEG**  
 WATER AND WASTE DEPARTMENT

**WATERMAIN RENEWALS CONTRACT No. 5**

POLSON AVENUE  
 RADFORD STREET TO 175m EAST OF AIRLIES  
 RADFORD STREET TO STATION 1+90

SHEET 1 OF 19  
 CITY DRAWING NUMBER D-8526