

EXISTING	PROPOSED	EXISTING	PROPOSED
GAS	○	MANHOLE	●
MIS	□	CATCH BASIN/CATCH PIT	■
HYDRO	△	C & G INLET W/BOX	▲
VIDEO	◇	TREE	◆
TRAFFIC SIGNALS	⊕	TEST HOLE	⊖
LAND DRAINAGE SEWER	—	PROPERTY LINE	—
SANITARY/COMBINED SEWER	—	SURVEY BAR	—
CATCHBASIN LEAD	—	CHAIN LINK FENCE	—
WATERMAIN	—	WOOD FENCE W/PILES	—
SEWER	—	BACK OF CURB/PAVEMENT	—
DITCH	—	ELEVATION	—
LEGEND - PLAN		LEGEND - PLAN	

EXISTING	PROPOSED	EXISTING	PROPOSED
CONCRETE	▨	ASPHALT	▩
CONCRETE SIDEWALK	▧	PAVING STONE	▦
TOPSOIL & SOD	▥	BASE COURSE/GRAVEL	▤
RAMP CURB	▣		
LEGEND - PLAN		LEGEND - PLAN	

NO.	ISSUED FOR CONSTRUCTION	ISSUED FOR REVIEW	DATE	BY
1	ISSUED FOR CONSTRUCTION		04Apr23	DD
0	ISSUED FOR REVIEW		04Apr02	DD
	REVISIONS			

DESIGNED BY	CHECKED BY	APPROVED BY	DATE
DKH	DKH	DKH	04/22/04

ENGINEER'S SEAL	CONSULTANT DRAWING NO.
	41-0103-0265-366-00

CITY DRAWING NUMBER	SHEET	REV
N/A	3 OF 6	1

CITY DRAWING NUMBER	SHEET	REV
N/A	3 OF 6	1

CITY DRAWING NUMBER	SHEET	REV
N/A	3 OF 6	1

CITY DRAWING NUMBER	SHEET	REV
N/A	3 OF 6	1

CITY DRAWING NUMBER	SHEET	REV
N/A	3 OF 6	1

CITY DRAWING NUMBER	SHEET	REV
N/A	3 OF 6	1

CITY DRAWING NUMBER	SHEET	REV
N/A	3 OF 6	1

CITY DRAWING NUMBER	SHEET	REV
N/A	3 OF 6	1

CITY DRAWING NUMBER	SHEET	REV
N/A	3 OF 6	1

CITY DRAWING NUMBER	SHEET	REV
N/A	3 OF 6	1

CITY DRAWING NUMBER	SHEET	REV
N/A	3 OF 6	1

CITY DRAWING NUMBER	SHEET	REV
N/A	3 OF 6	1

CITY DRAWING NUMBER	SHEET	REV
N/A	3 OF 6	1

CITY DRAWING NUMBER	SHEET	REV
N/A	3 OF 6	1

CITY DRAWING NUMBER	SHEET	REV
N/A	3 OF 6	1

CITY DRAWING NUMBER	SHEET	REV
N/A	3 OF 6	1

CITY DRAWING NUMBER	SHEET	REV
N/A	3 OF 6	1

CITY DRAWING NUMBER	SHEET	REV
N/A	3 OF 6	1

CITY DRAWING NUMBER	SHEET	REV
N/A	3 OF 6	1

CITY DRAWING NUMBER	SHEET	REV
N/A	3 OF 6	1

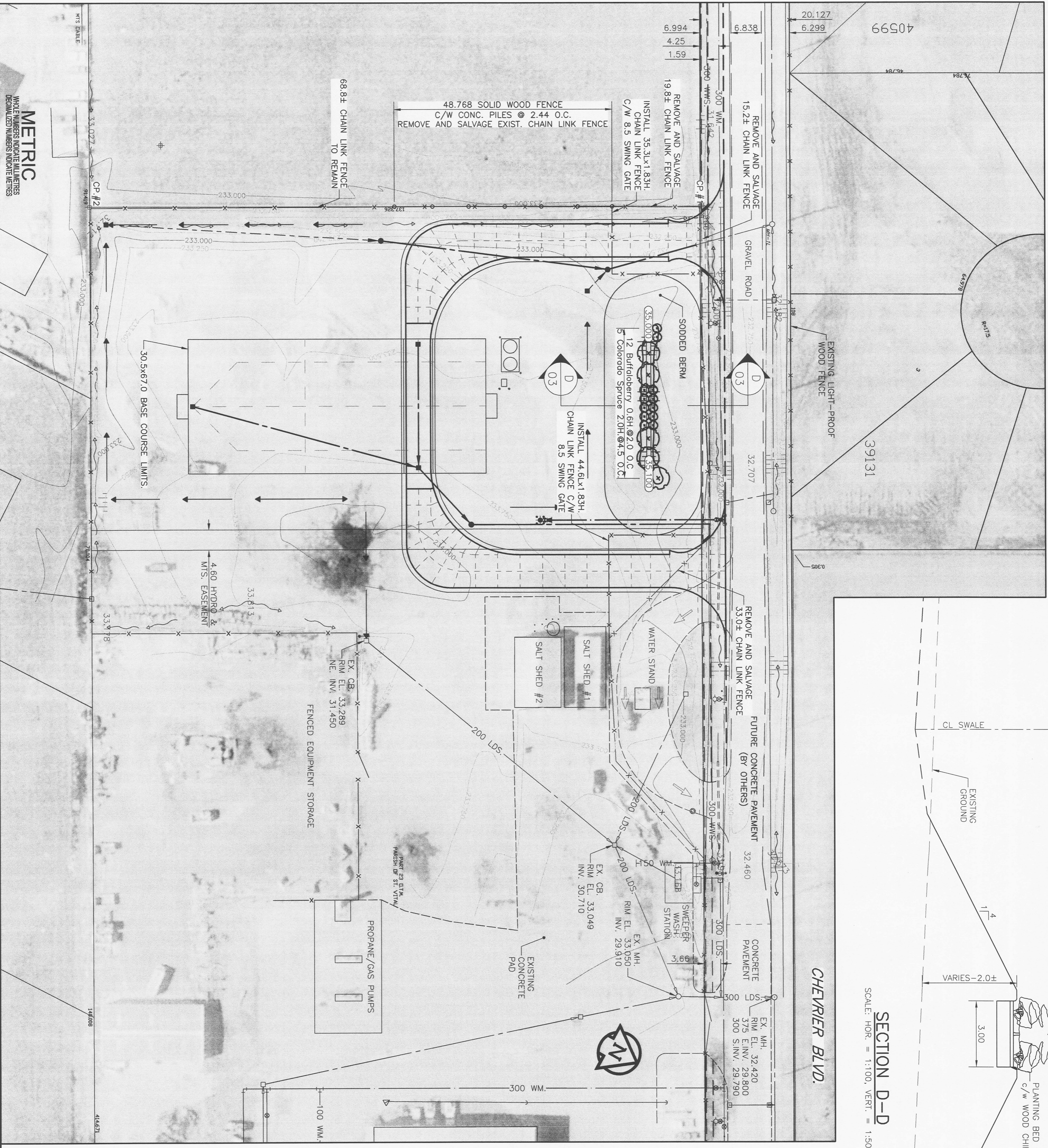
CITY DRAWING NUMBER	SHEET	REV
N/A	3 OF 6	1

CITY DRAWING NUMBER	SHEET	REV
N/A	3 OF 6	1

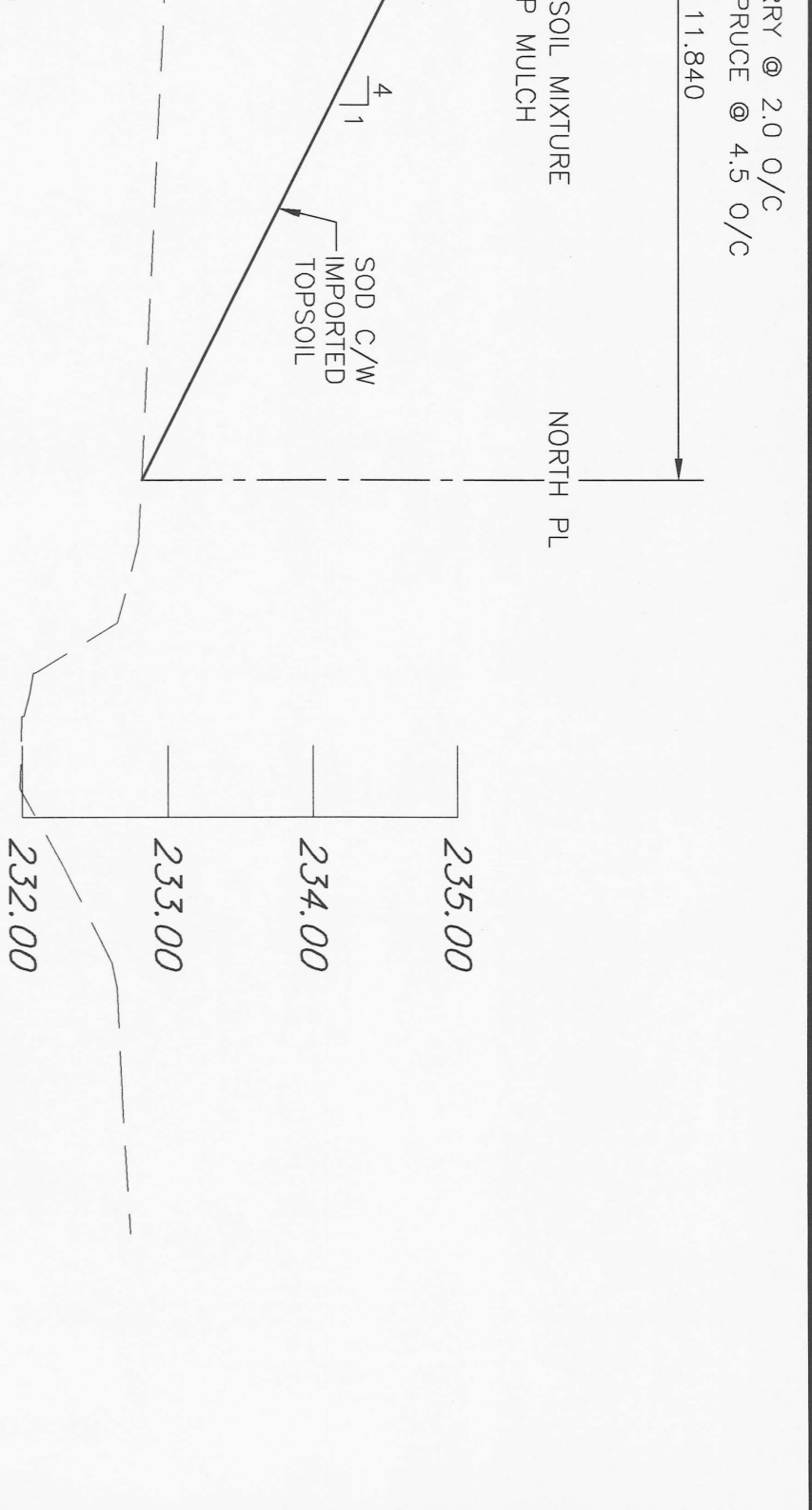
CITY DRAWING NUMBER	SHEET	REV
N/A	3 OF 6	1

CITY DRAWING NUMBER	SHEET	REV
N/A	3 OF 6	1

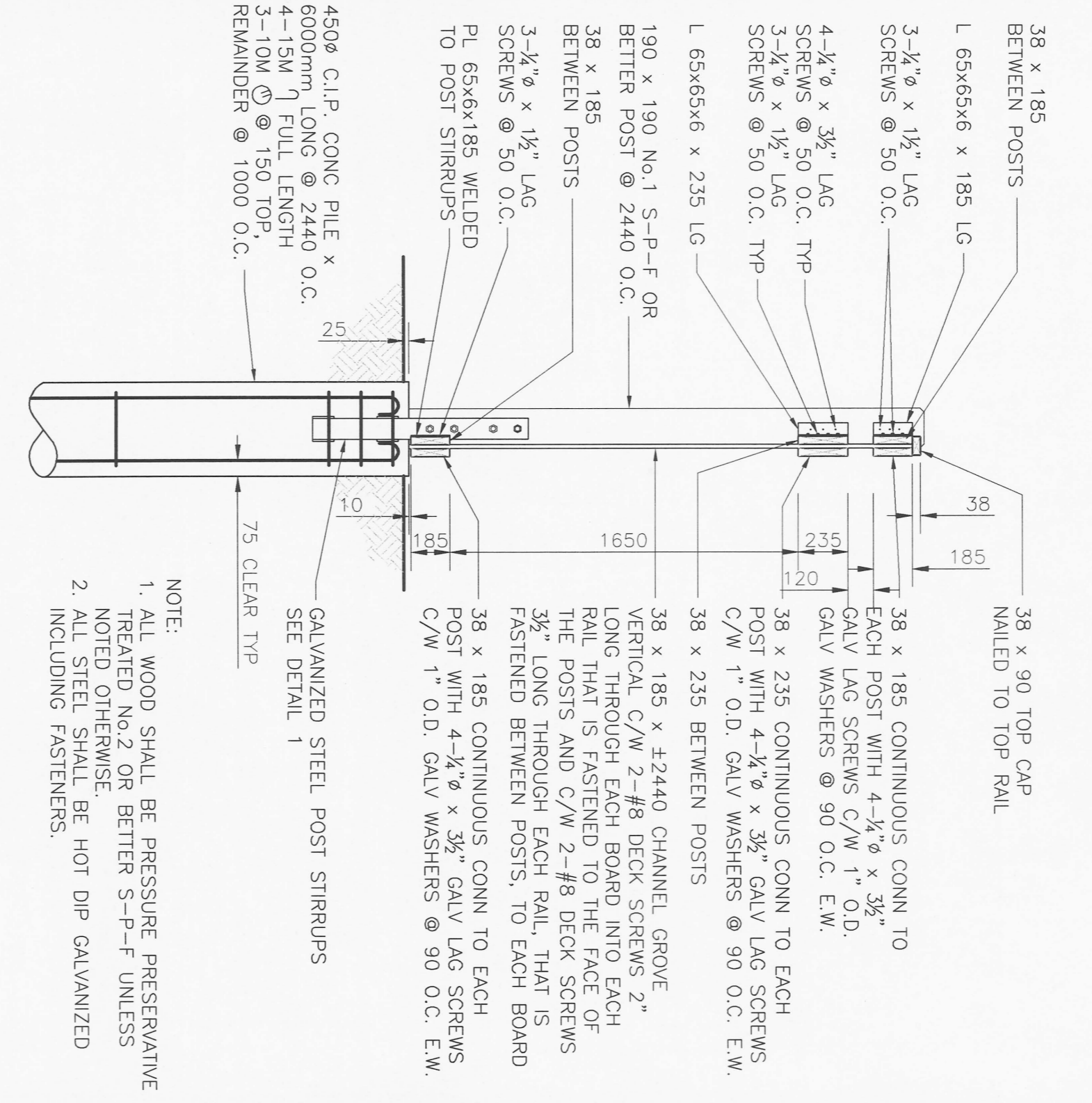
CITY DRAWING NUMBER	SHEET	REV
N/A	3 OF 6	1



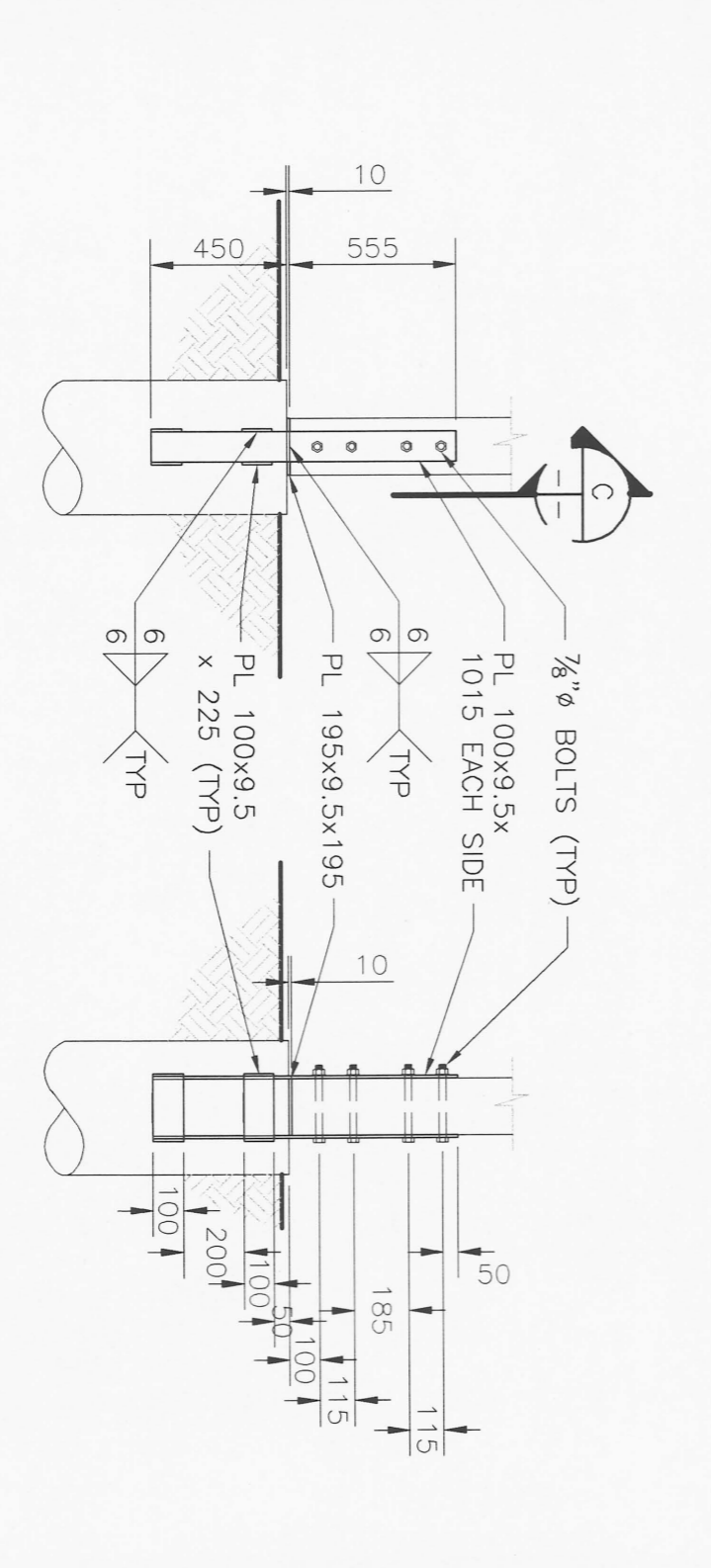
SECTION D-D
 SCALE: HOR. = 1:100, VERT. = 1:50



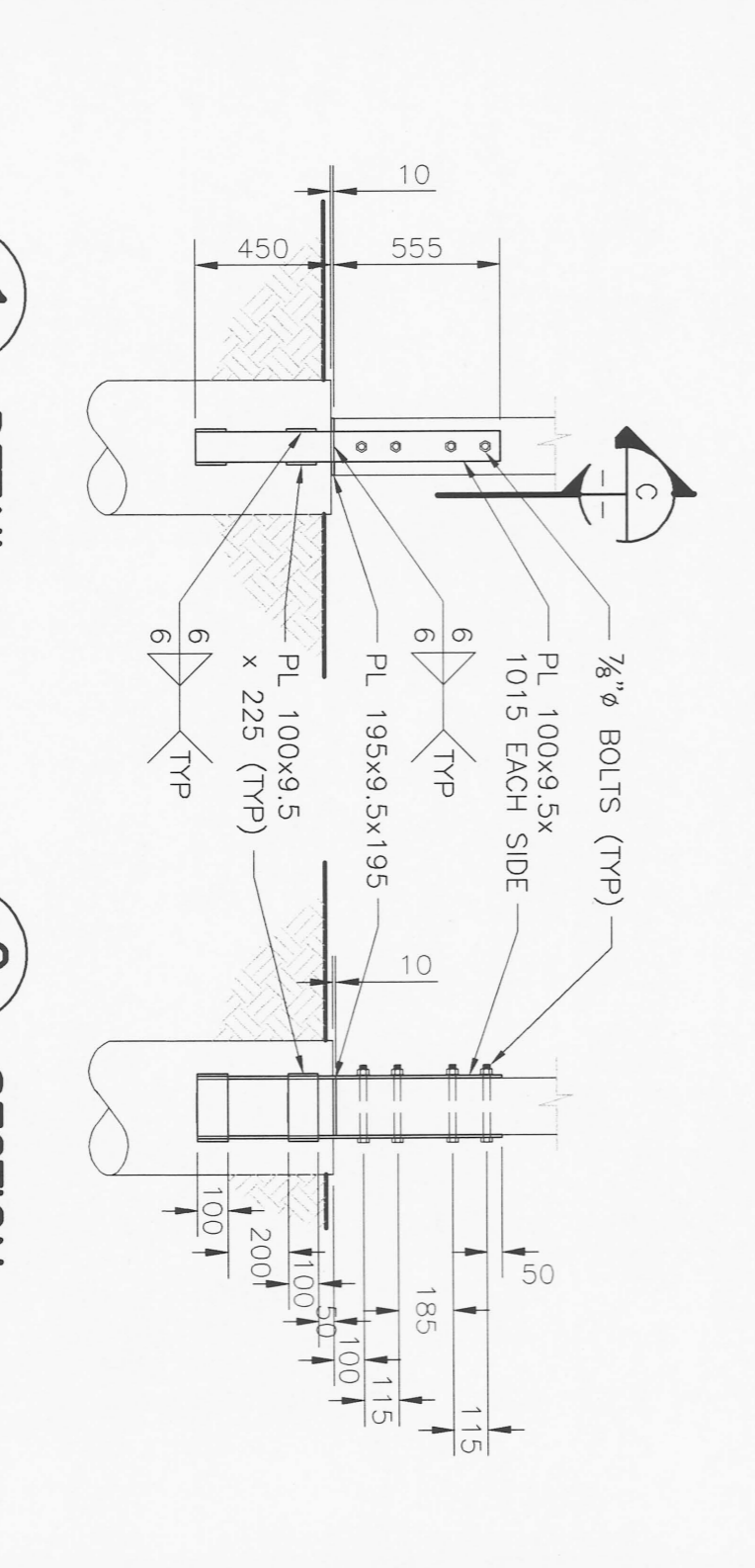
WOOD FENCING POST SECTION
 1:25



DETAIL
 1:25



SECTION
 1:25



THE CITY OF WINNIPEG
 PUBLIC WORKS DEPARTMENT
 ENGINEERING DIVISION
 SAND and SALT STORAGE FACILITY
 at 1539 WAVERLEY STREET
 YARD WORKS
 LANDSCAPE PLAN
 FENCING & TREE PLANTING LAYOUT, & SECTIONS

BID OPPORTUNITY NO.
 187-2004

APEN
 Certificate of Authorization
 UMA Engineering Ltd.
 No. 256 Expiry: April 30, 2004

UMA
 Consulting • Engineering • Construction • Management Services
 3 W. Waverley St. & Chevrier Blvd.
 1st fl. in N. corner, found #1539 Waverley
 N.E. corner of Building block of
 B.V. 75-004
 ELEV. 233.501

ENGINEER'S SEAL
 32
 DONALD K. HESTER
 member no.
 of the Association of Professional Engineers of the Province of Manitoba

CONSULTANT DRAWING NO.
 41-0103-0265-366-00

CITY DRAWING NUMBER
 N/A

SHEET
 3 OF 6

REV
 1