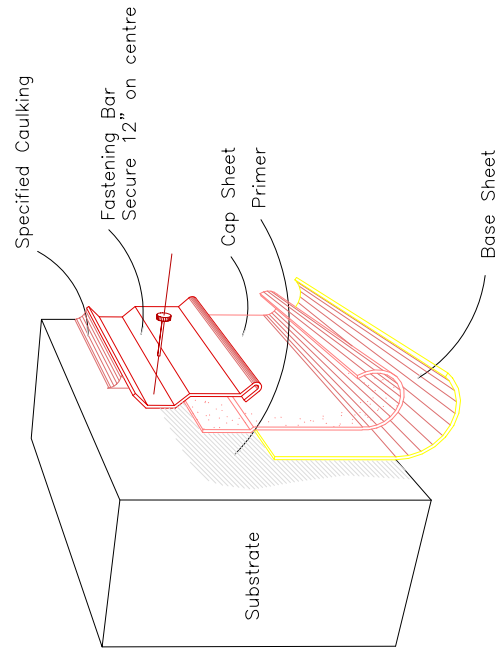
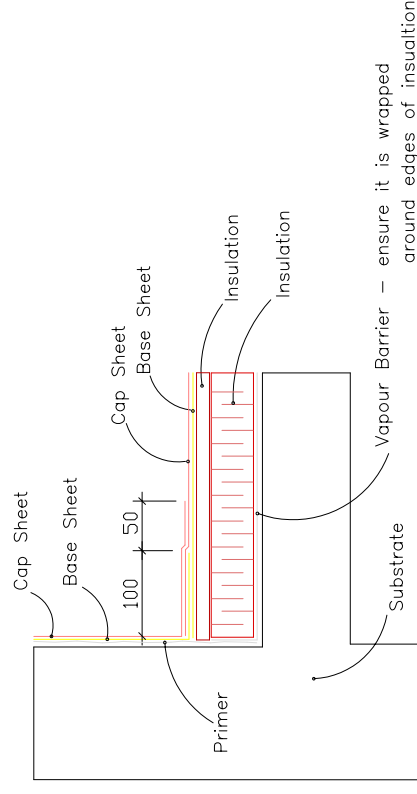


Typical Fastening Bar

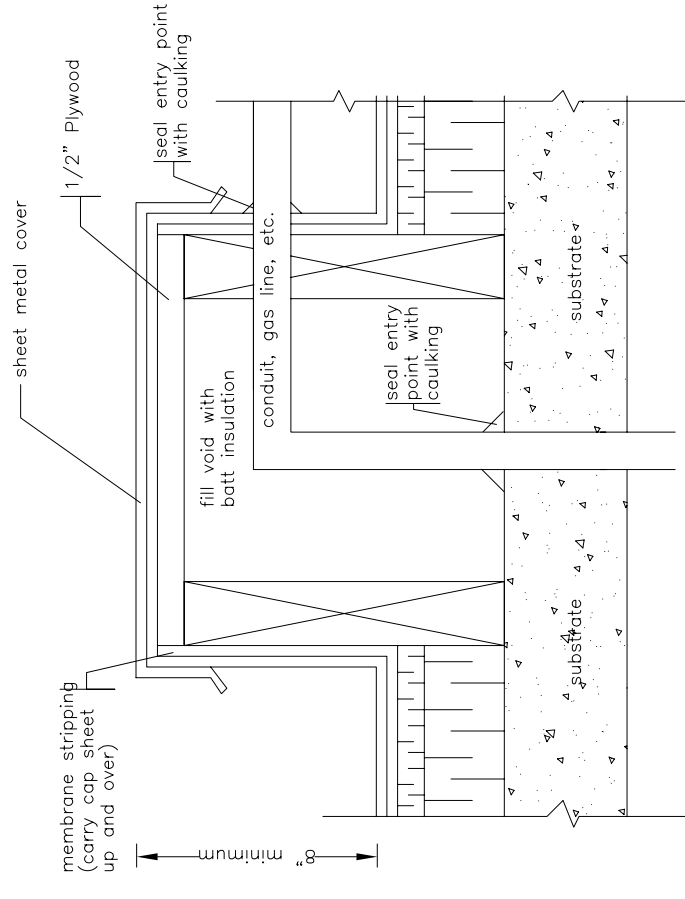


Typical Roof Edge Detail

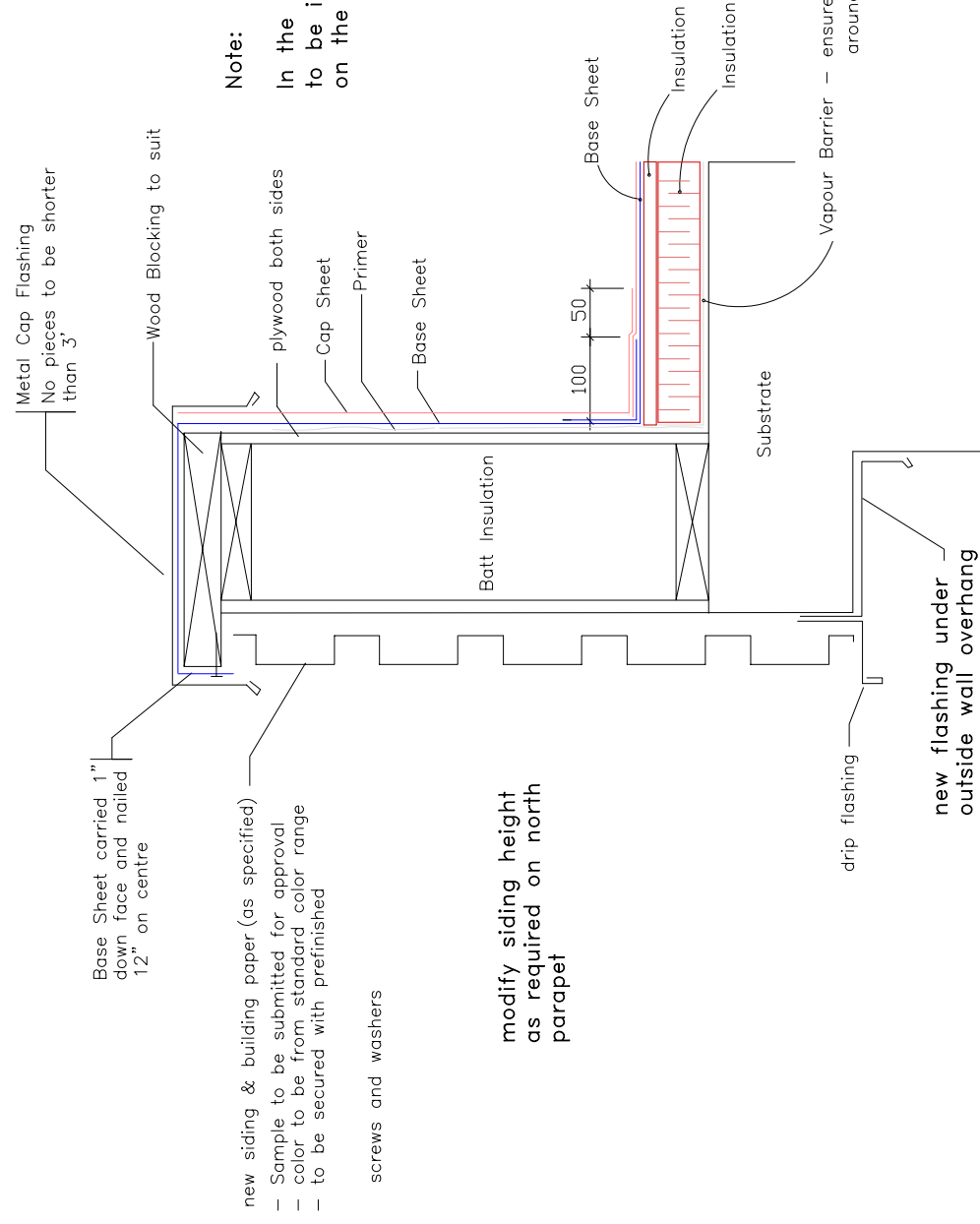


Note: Modified Bitumen stripping used in conjunction with 4 ply felt membrane is to have base sheet extend 12" onto flat and cap sheet 18" onto flat.

Typical Curb Style Pitch Box



Typical Parapet Construction



Note:
In the base of roof B1 an additional sloped flashing is to be installed to cover the top 2" of the cedar shakes on the face of the mansards.

new siding & building paper (as specified)
- Sample to be submitted for approval
- color to be from standard color range
- to be secured with prefinished

screws and washers

modify siding height as required on north parapet

Note: Details are to be similar for inverted roof assemblies

AGASSIZ CONSULTING GROUP

809 Pipeline Road, Winnipeg, Manitoba
Phone: 697-8091 Fax: 697-8039

Project: Weston Community Center
1625 Logan Avenue
Winnipeg, MB

Date: February 29, 2004

Drawing No. D-1

File no: 3649-04 **Scale:** N.T.S.