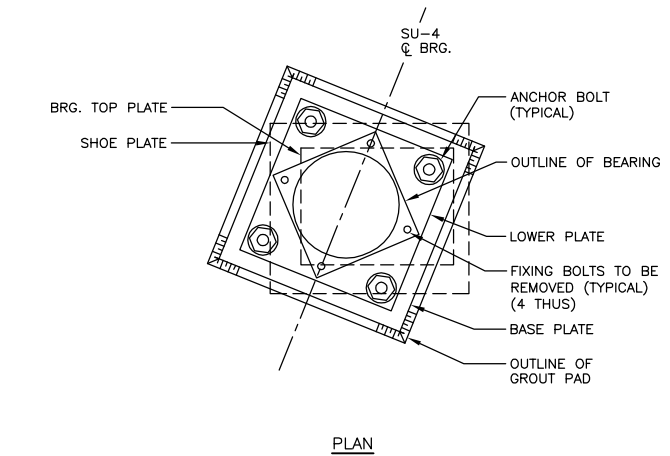


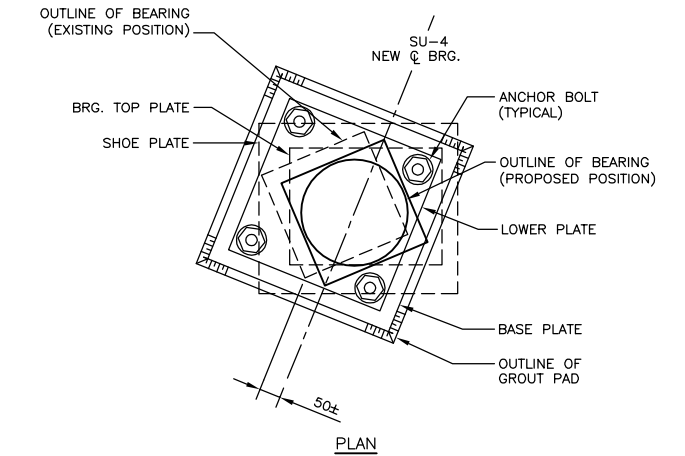
PLAN
SCALE 1:500

LEGEND

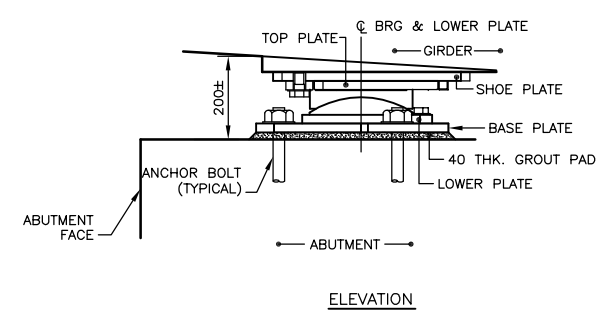
- MULTIDIRECTIONAL
- UNIDIRECTIONAL (LONGITUDINAL)



PLAN

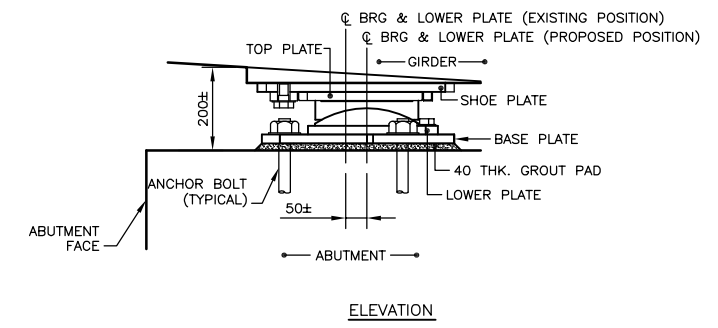


PLAN



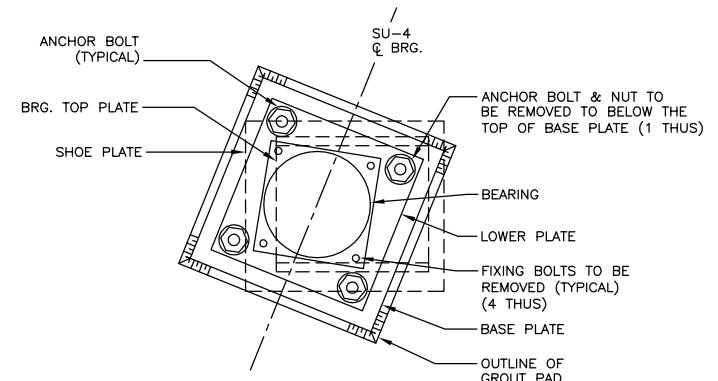
ELEVATION

EXISTING

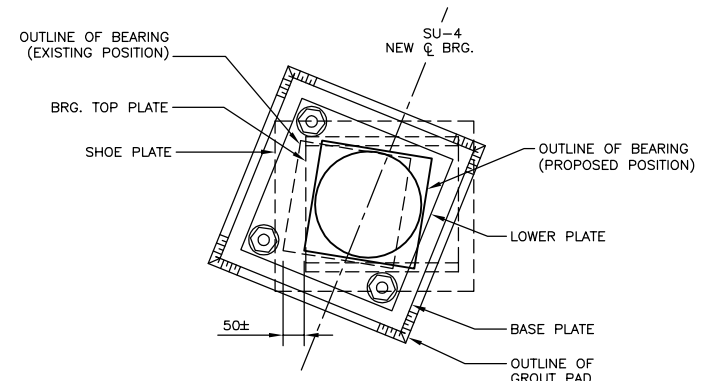


ELEVATION

PROPOSED



PLAN

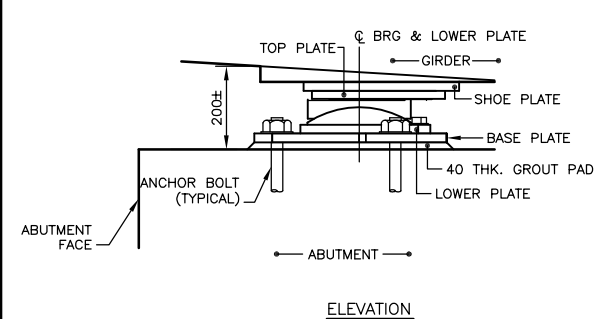


PLAN

MULTI-DIRECTIONAL
SCALE 1:10
(6 THUS AT EACH ABUTMENT)

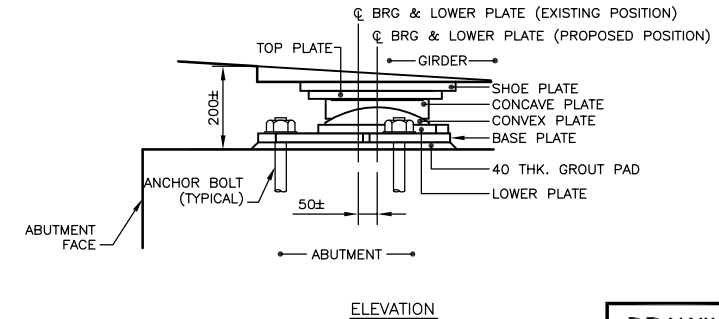
NOTES:

1. REFER TO SPECIFICATIONS FOR BEARING REMOVAL/REPOSITIONING SEQUENCE AND METHODS.
2. FILL ALL HOLES IN STEEL PLATES AFTER BOLTS ARE REMOVED WITH FLEXIBLE SEALANT.
3. AFTER ADJUSTMENTS, MARK THE LOCATION OF THE LOWER BEARING POT ON THE LOWER BASE PLATE WITH A PERMANENT FELT MARKER. THIS WILL ENABLE MONITORING OF THE BEARING; WHETHER IT WILL SLIDE IN FUTURE ON THE BASE PLATE AFTER THE FIXING BOLTS ARE PERMANENTLY REMOVED.



ELEVATION

EXISTING



ELEVATION

PROPOSED

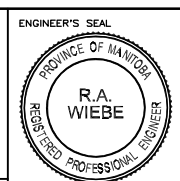
UNI-DIRECTIONAL
SCALE 1:10
(2 THUS AT EACH ABUTMENT)

DRAWING REDUCED
NOT TO SCALE

BEARING TABLE		
	UNI-DIRECTIONAL	MULTI-DIRECTIONAL
DEAD LOAD (kN)	277 (31.1 TONS)	277 (31.1 TONS)
DEAD LOAD & LIVE LOAD (kN)	578 (58.9 TONS)	578 (58.9 TONS)
LATERAL LOAD (kN)	50	-
HEIGHT (mm)	200±	200±



B.M. ELEV.	DESIGNED BY: R.A.W.
	DRAWN BY: A.P.
	CHECKED BY: R.A.W.
	APPROVED BY:
	SCALE: HORZ. AS SHOWN
	VERT. DATE: APRIL 2004
2 ISSUED FOR TENDER 04/04/12 R.A.W.	AUTHORIZED BY:
1 ISSUED FOR REVIEW 04/04/2 R.A.W.	DATE:
NO. REVISIONS DATE BY	CITY BRIDGE ENGINEER



THE CITY OF WINNIPEG
PUBLIC WORKS DEPARTMENT

Winnipeg

2004 BRIDGE MAINTENANCE
PEMBINA HIGHWAY BRIDGE OVER
THE LASALLE RIVER
BRIDGE BEARING MODIFICATIONS

CITY DRAWING NUMBER
B224-04-02
SHEET 2 OF 2

BRIDGE BEARING
PLAN AND ELEVATIONS

CONSULTANT PROJECT NO.
04-2937-1000