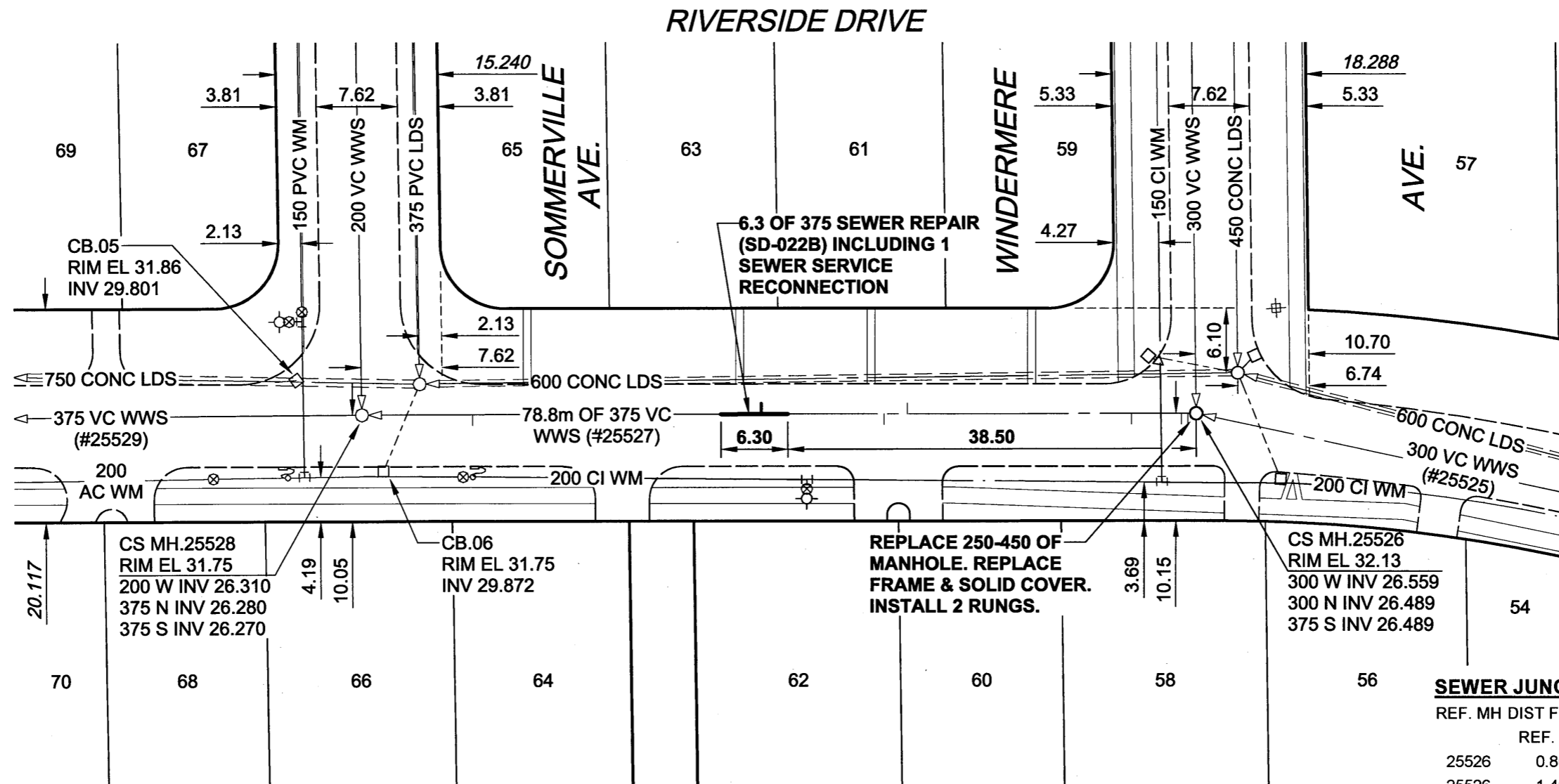


B SIZE 11" x 17" (279mm x 432mm)

UMA FILE NAME: 0265-364-00 00-C-1005 RX.DWG 2004-05-07 1:27pm ADL



SEWER JUNCTION INFORMATION*

REF. MH	DIST FROM REF. MH	SIZE	CLOCK AT
25526	0.80	150Ø	11
25526	1.40	100Ø	11
25526	6.10	150Ø	11
25526	27.20	150Ø	01
25526	29.40	150Ø	11
25526	41.00	150Ø	01
25526	68.20	150Ø	11

*JUNCTION LOCATION FROM VIDEO INSPECTION
BID OPPORTUNITY NO. 17-2004

METRIC
WHOLE NUMBERS INDICATE MILLIMETRES
DECIMALIZED NUMBERS INDICATE METRES

APEGM
Certificate of Authorization
UMA Engineering Ltd.
No. 256 Expiry: April 30, 2005



DESIGNED BY	ALD	CHECKED BY	<i>Fm</i>
DRAWN BY	ADL	APPROVED BY	<i>Bygonaleleba</i>
HOR. SCALE	1:500	RELEASED FOR CONSTRUCTION	<i>ADL</i>
VERT. SCALE		DATE	<i>04/05/10</i>

PROFESSIONAL'S SEAL

CONSULTANT DRAWING NO. 05
0265-364-00

THE CITY OF WINNIPEG
WATER AND WASTE DEPARTMENT

PROVINCE OF MANITOBA/CITY OF WINNIPEG
2004 RESIDENTIAL STREET RENEWAL PROGRAM
WASTEWATER SEWER REPAIRS

RIVERSIDE DRIVE
SOMMERVILLE AVENUE
TO WINDERMERE AVENUE

SHEET 05 OF 06
CITY DRAWING NUMBER
05391

REV A

LOCATION APPROVED
UNDERGROUND STRUCTURES

SUPR. U/G STRUCTURES DATE COMMITTEE

NOTE:
LOCATION OF UNDERGROUND STRUCTURES AS SHOWN ARE BASED ON THE BEST INFORMATION AVAILABLE. BUT NO GUARANTEE IS GIVEN THAT ALL EXISTING UTILITIES ARE SHOWN OR THAT THE GIVEN LOCATIONS ARE EXACT. CONFIRMATION OF EXISTENCE AND EXACT LOCATION OF ALL SERVICES MUST BE OBTAINED FROM THE INDIVIDUAL UTILITIES BEFORE PROCEEDING WITH CONSTRUCTION.

NO.	REVISIONS	YY/MM/DD	BY
A	ISSUED FOR CONSTRUCTION	04/05/12	ADL

BM 64-008 ELEV 231.949m
N.W. Cor. Riverside Dr. & Byng PL., 19mm dia. x 6.1m I.B. in Valve Box, 1.0m N. of N.L. Byng PL. & 1.0m W. of W.L. Riverside Dr.