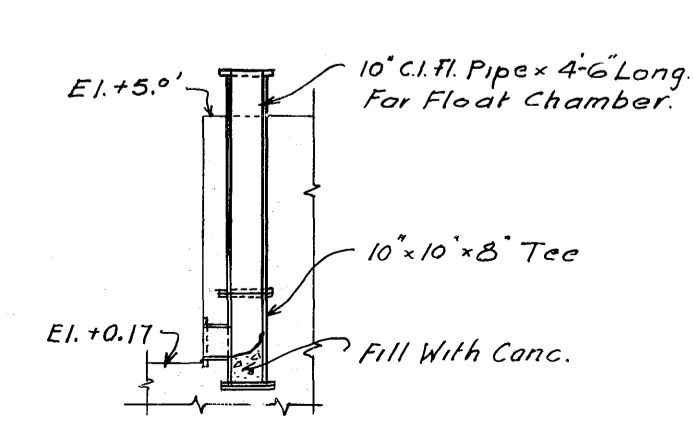
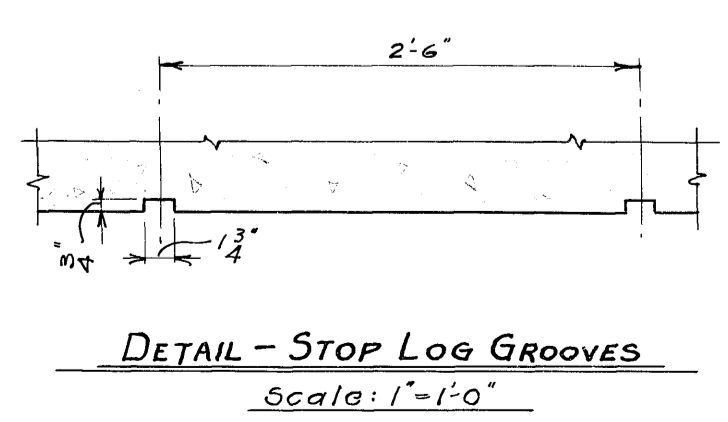
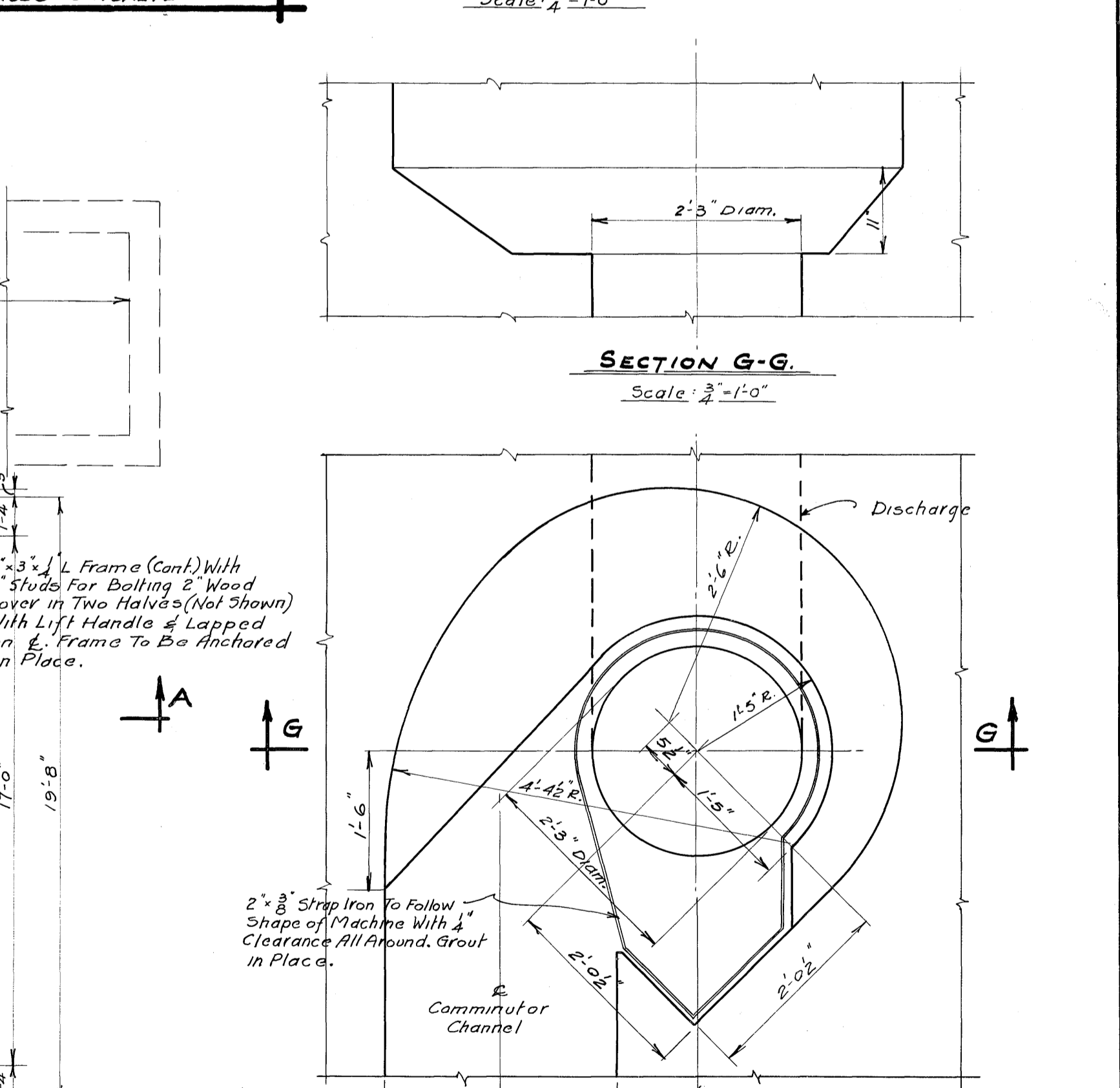
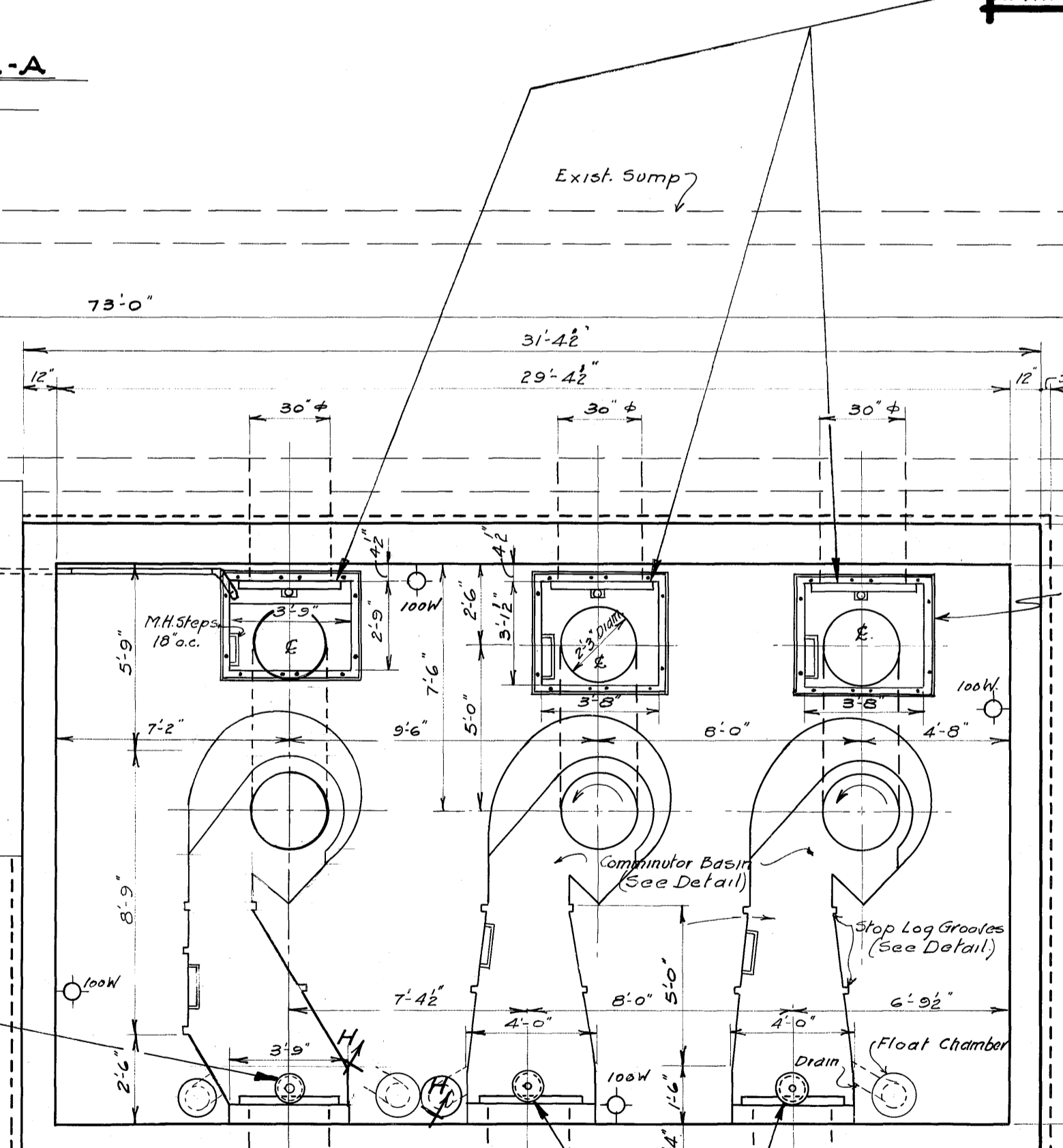
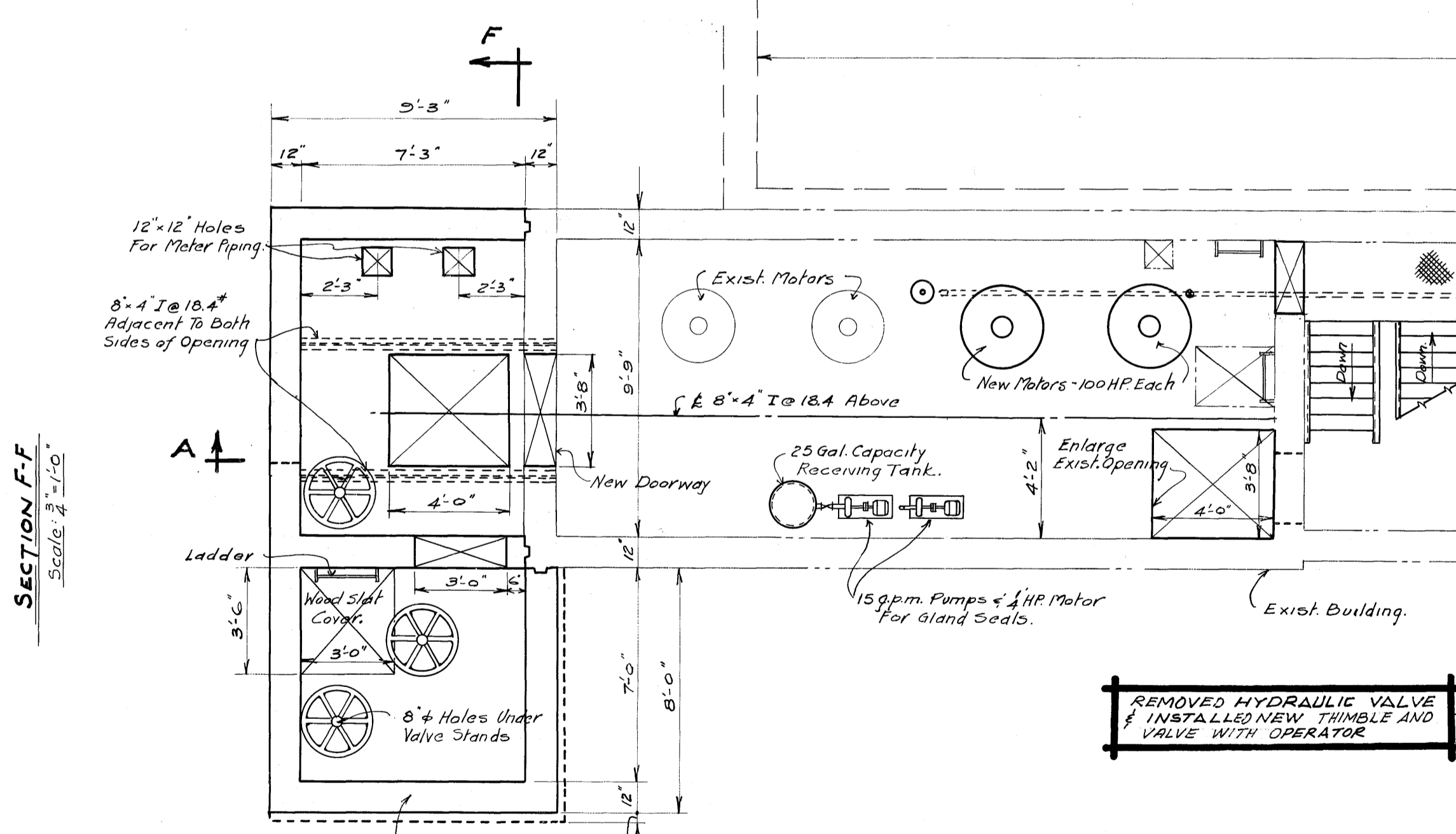
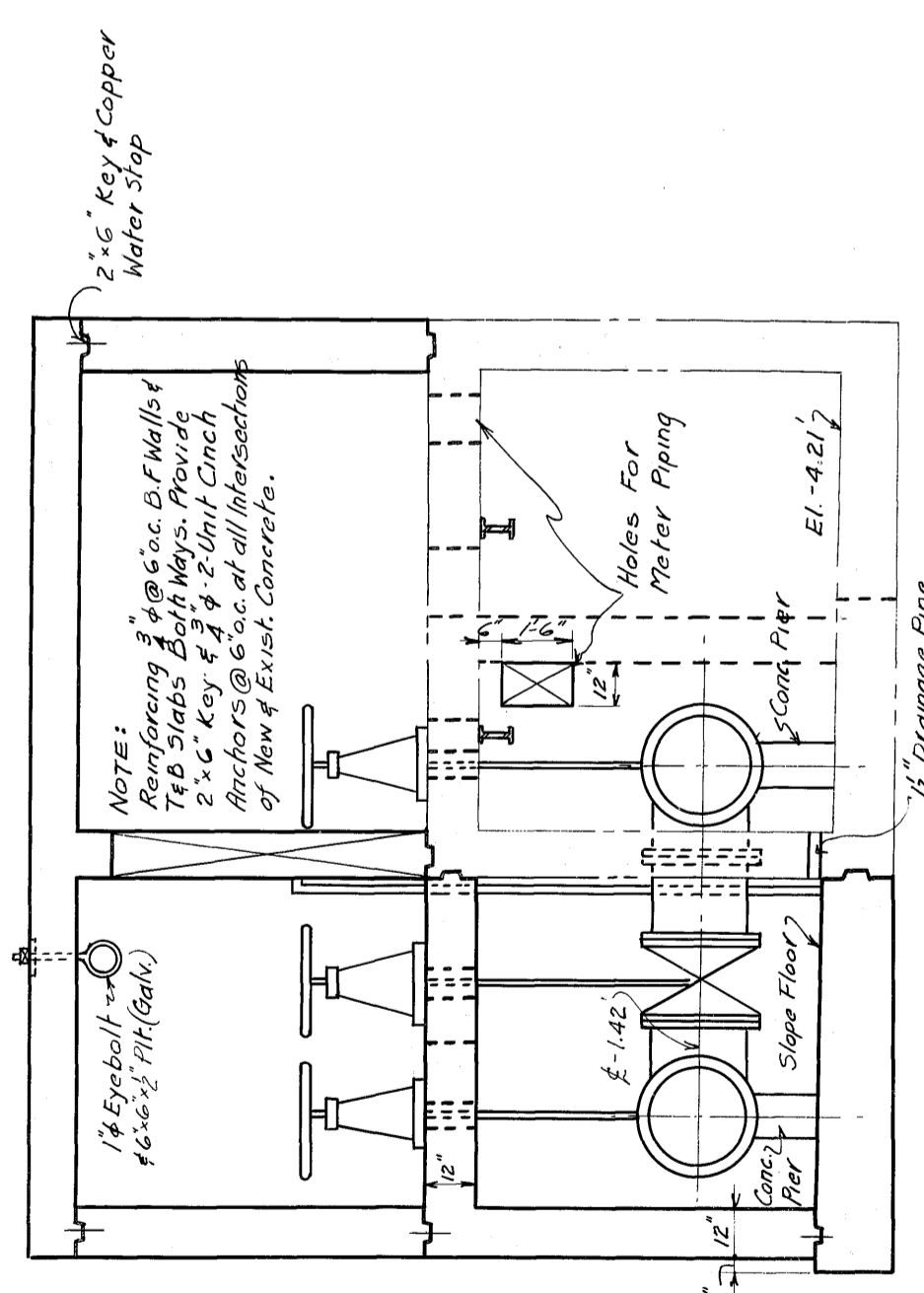
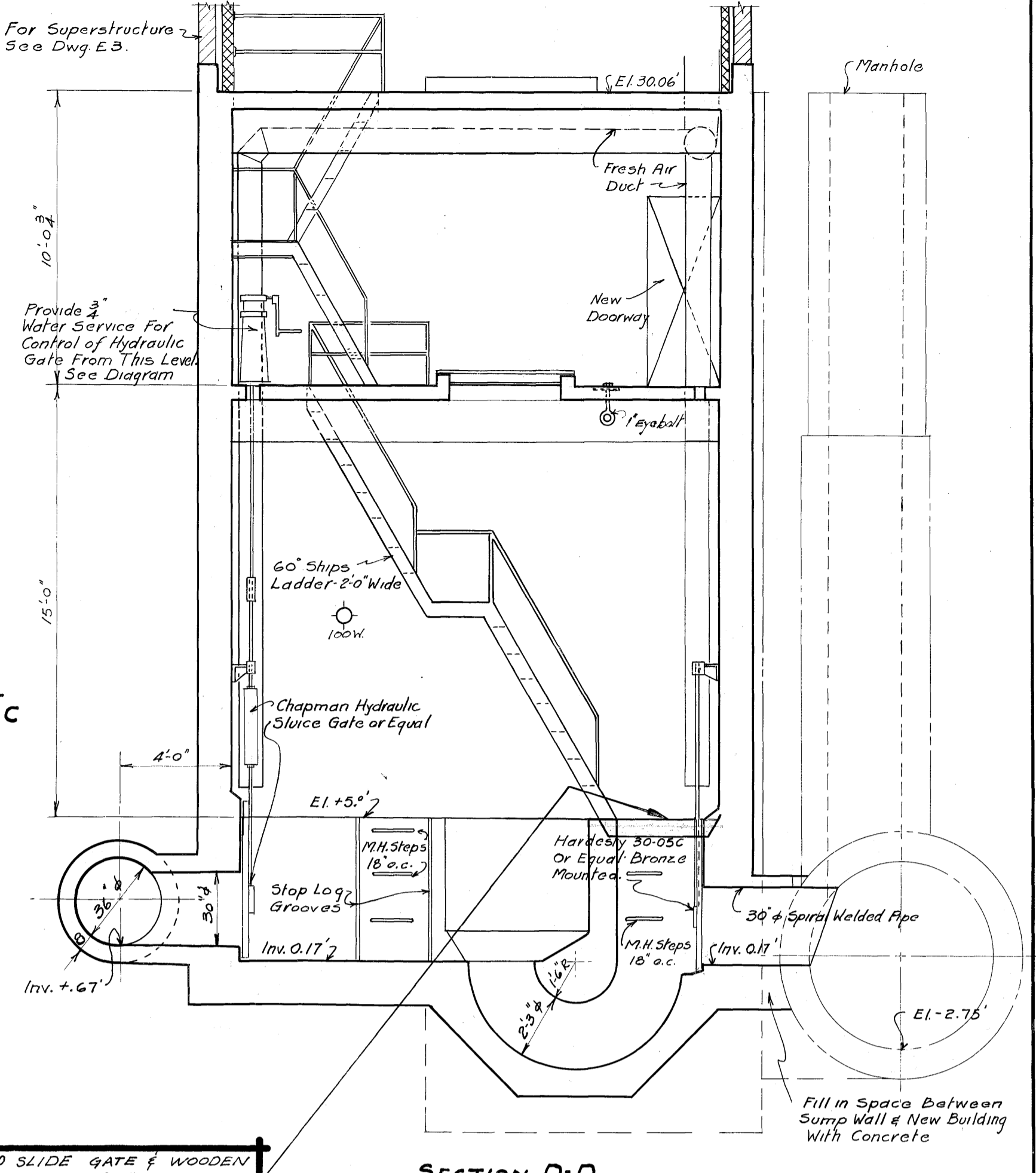
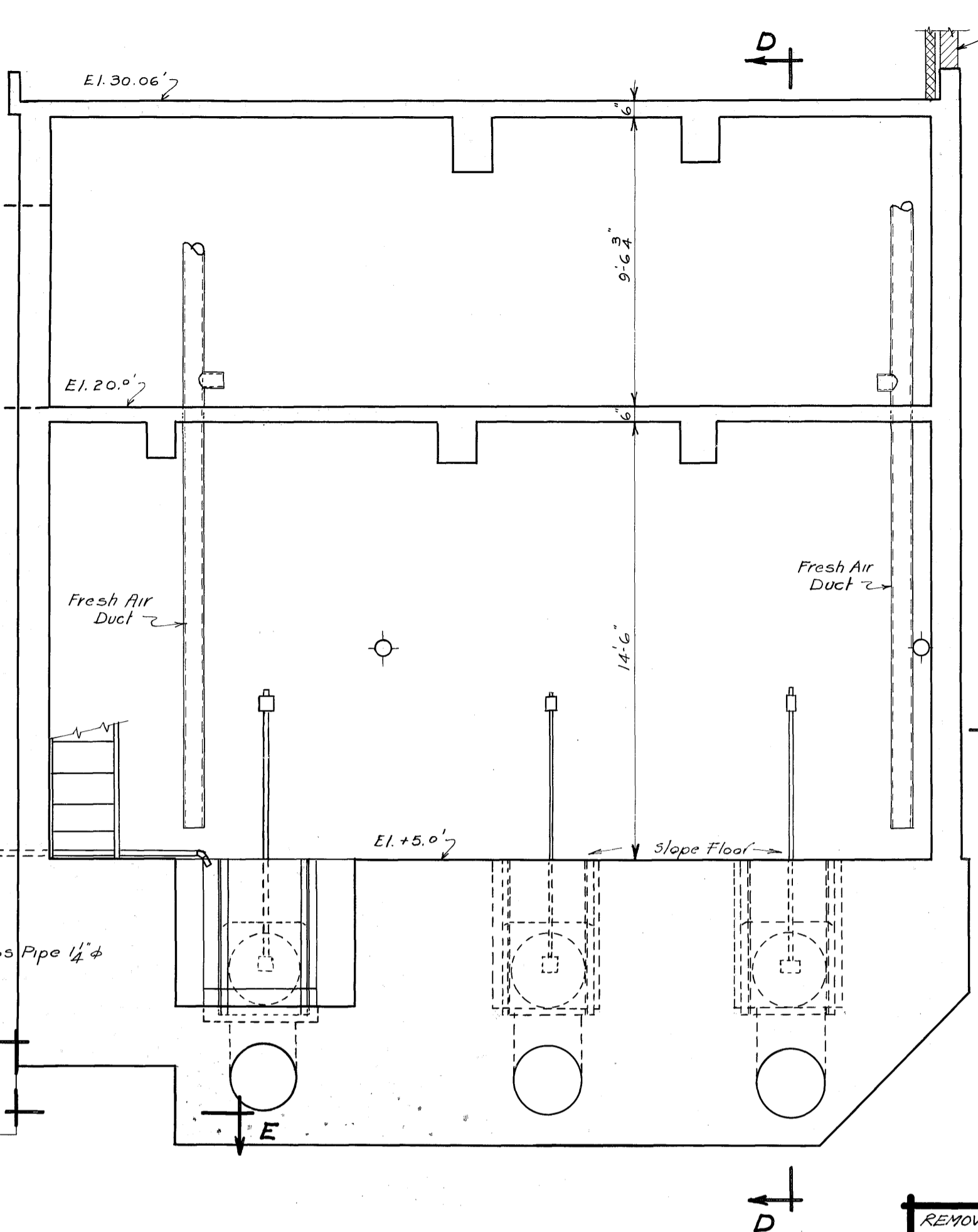
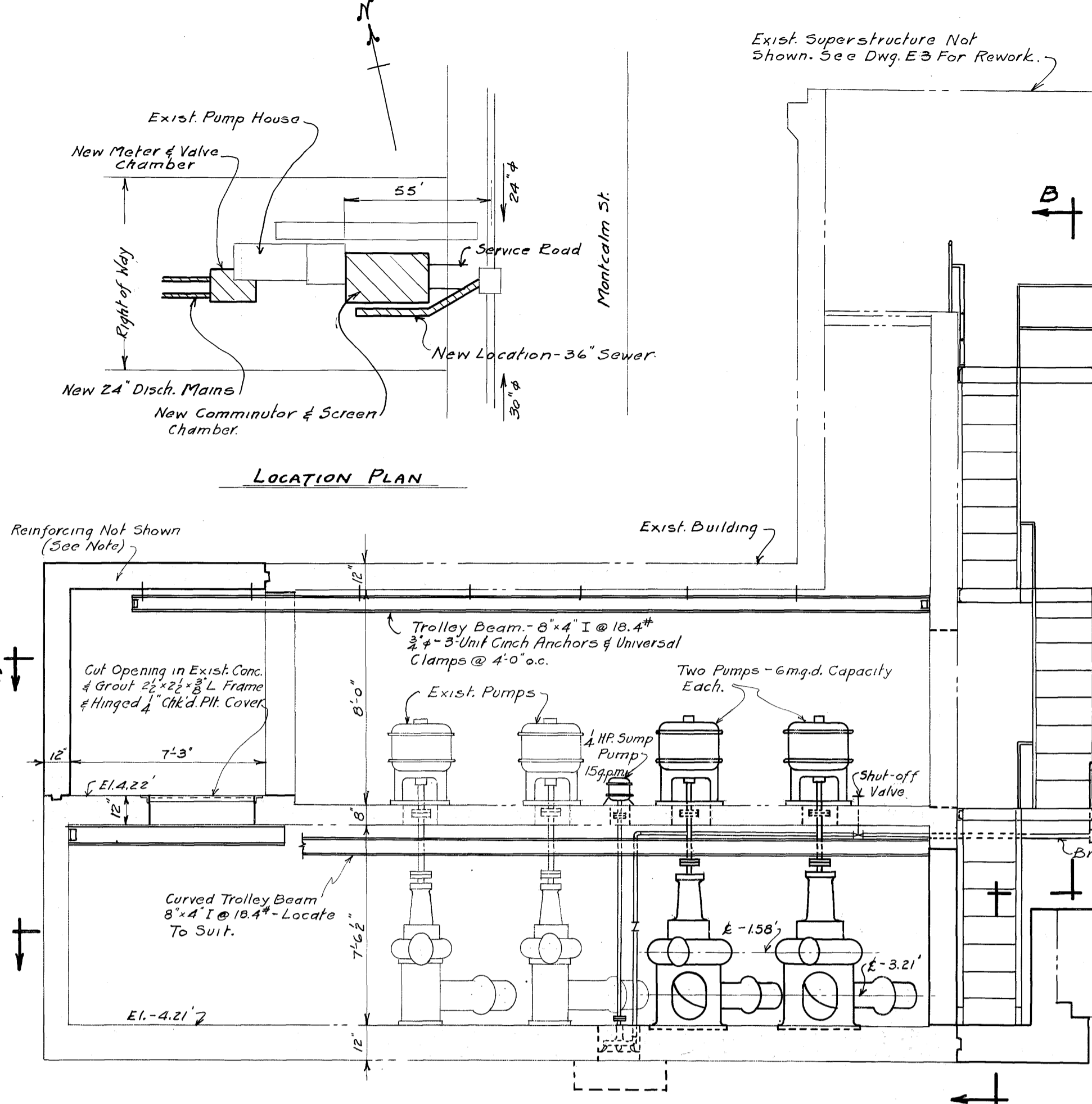
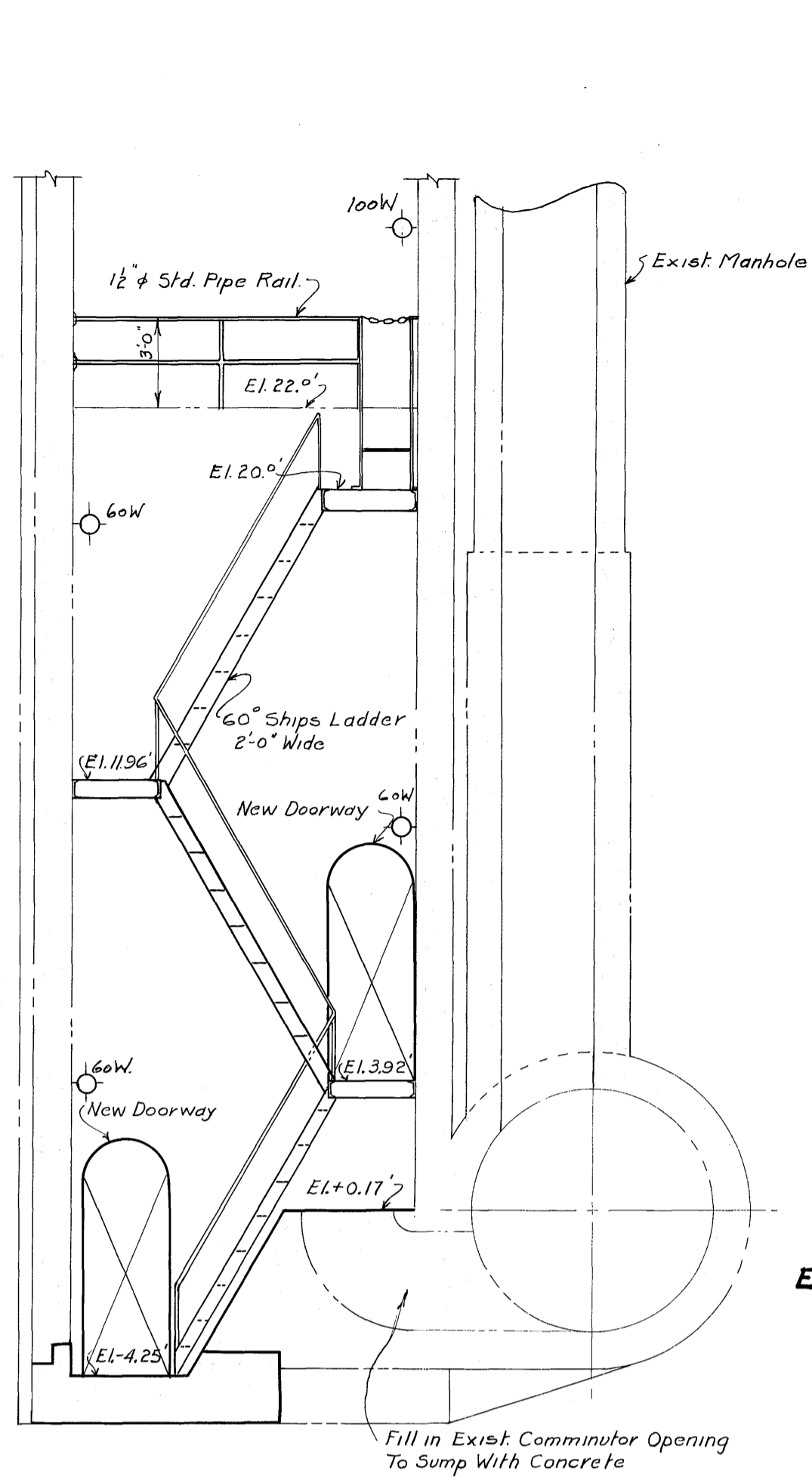


5410050



NOTE:
For Sect. E-E See Dwg. E2.
For Superstructure See Dwg. E3.
For Steel & Reinforcing - See Dwg. E4.
For Electric Lights See Dwg. E4; Heat & Power E5.

FOR WORK OUTLINED THIS COMPLETED 1989

GREATER WINNIPEG SANITARY DISTRICT		
DRAWN BY J.C.D.T. (W.H.G.) DATE 31-7-80 TRACED BY W.R.H. CHECKED BY G.A.C. APPROVED: <i>[Signature]</i> S.U.P.T. FOR DISTRICT: <i>[Signature]</i> GEN. MGR. FOR CONSULTING ENGINEERS	W. D. HURST CHAIRMAN OF COMMISSIONERS N. S. BUBBIS GENERAL MANAGER ALVORD, BURDICK & HOWSON CONSULTING ENGINEERS	TITLE MONTCALM PUMPING STATION ADDITIONS (EQUIPMENT) SCALE NOTED. DRAWING NO. 261