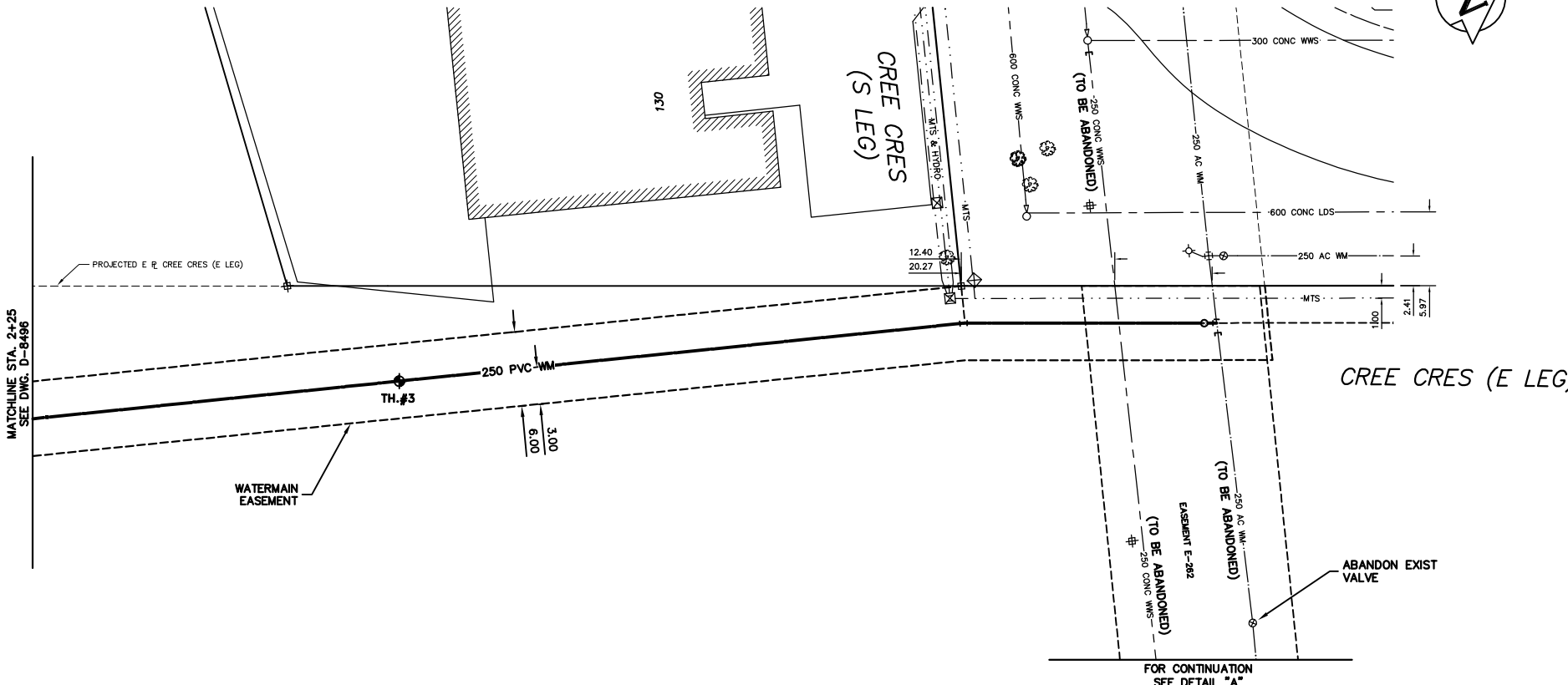


NOTE: CHAINAGES SHOWN ARE ALONG E. R. OF CREE CRES. (E. LEG)



WATER SERVICE INFORMATION

ADDRESS	SIZE(mm) & TYPE (STREET)	SIZE(mm) & TYPE (PROP)	SHORT & LONG MEASUREMENT	CORP. LOCATION	REMARKS
130 CREE CRES RESIDENTIAL	38 COPPER	38 COPPER	7.62 W OF E 20.12 W 1ST HYD	E.LEG/S.LEG 12.19 W OF HYD	SERV. FROM CREE

* SERVICES TO BE RENEWED TO R. ALL OTHERS TO BE RECONNECTED

CONSTRUCTION NOTES

1. EXPOSE EXISTING WATERMAIN & CONFIRM INVERTS PRIOR TO CONSTRUCTION.
2. LOCATION OF ALL SERVICES TO BE CONFIRMED IN THE FIELD.
3. INSTALL WATERMAIN BY TRENCHLESS METHODS.
4. TRENCHES AND EXCAVATIONS WITHIN 1 METRE OF A PAVED AREA INCLUDING SIDEWALKS SHALL BE CLASS 3 BACKFILL.
5. ALL MATERIALS SHALL CONFORM TO THE CITY OF WINNIPEG STANDARD CONSTRUCTION SPECIFICATIONS.
6. MINIMUM COVER TO TOP OF WATERMAIN SHALL BE 2.4 m.
7. REPLACE ALL EXISTING LEAD SERVICES FROM PROPOSED WATERMAIN TO R.
8. NOTIFY ALL AFFECTED RESIDENTS AND BUSINESSES 24 HOURS IN ADVANCE OF ANY WATER SHUTDOWNS OR DISRUPTION OF SERVICE.

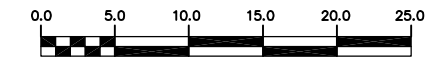
METRIC

WHOLE NUMBERS INDICATE MILLIMETRES
DECIMALIZED NUMBERS INDICATE METRES

NOTE: ALL VALVES TO BE INSTALLED COUNTERCLOCKWISE TO CLOSE

WARNING

IF POWER EQUIPMENT OR EXPLOSIVES ARE TO BE USED FOR EXCAVATION ON THIS PROJECT THE CONTRACTOR MUST:
 1) NOTIFY THE GAS COMPANY OF THE PROPOSED LOCATION OF EXCAVATION.
 2) TAKE PRECAUTION TO AVOID DAMAGE TO GAS COMPANY INSTALLATIONS.
 SEE PROVINCIAL REGULATION 210/72 FOR DETAILS



200 WM		200 WM		150 WM		150 WM	
+	HYDRANT	+	HYDRANT	+	HYDRANT	+	HYDRANT
o	VALVE	o	VALVE	o	VALVE	o	VALVE
---	525 LDS LAND DRAINAGE SEWER	---	525 LDS LAND DRAINAGE SEWER	---	300 LDS LAND DRAINAGE SEWER	---	300 LDS LAND DRAINAGE SEWER
---	375 WWS WASTEWATER SEWER	---	375 WWS WASTEWATER SEWER	---	250 WWS WASTEWATER SEWER	---	250 WWS WASTEWATER SEWER
o	MANHOLE	o	MANHOLE	o	MANHOLE	o	MANHOLE
□	CATCH BASIN	□	CATCH BASIN	□	CATCH BASIN	□	CATCH BASIN
▽	CURB INLET	▽	CURB INLET	▽	CURB INLET	▽	CURB INLET
△	REDUCER	△	REDUCER	△	REDUCER	△	REDUCER
X	COUPLING	X	COUPLING	X	COUPLING	X	COUPLING
o	ANODE	o	ANODE	o	ANODE	o	ANODE
---	EXISTING LEGEND-PLAN	---	PROPOSED LEGEND-PLAN	---	EXISTING LEGEND-PROFILE	---	PROPOSED LEGEND-PROFILE

LOCATION APPROVED UNDERGROUND STRUCTURES

SUPV. U/G STRUCTURES COMMITTEE DATE

NOTE: LOCATION OF UNDERGROUND STRUCTURES AS SHOWN ARE BASED ON THE BEST INFORMATION AVAILABLE BUT NO GUARANTEE IS GIVEN THAT ALL EXISTING UTILITIES ARE SHOWN OR THAT THE GIVEN LOCATIONS ARE EXACT. CONFIRMATION OF EXISTENCE AND EXACT LOCATION OF ALL SERVICES MUST BE OBTAINED FROM THE INDIVIDUAL UTILITIES BEFORE PROCEEDING WITH CONSTRUCTION.

B.M. ELEV.	FIELD BOOK #:
POSTED TO LBS:	
NO. REVISIONS	DATE BY

CITY OF WINNIPEG
WATER AND WASTE
ENGINEERING DIVISION

DESIGNED BY: C.J.H. CHECKED BY: T.W.
 DRAWN BY: C.J.H. APPROVED BY: K.Z.
 HOR. SCALE: 1:250
 VERTICAL SCALE: 1:50
 DATE: 2004 05 19

ENGINEER'S SEAL

ORIGINAL SIGNED BY K.R. ZUREK 04/05/19

BID OPPORTUNITY: 152-2004
 FILENAME: D-8497_0-8497.dwg
 PLOT DATE: 2004 05 19

THE CITY OF WINNIPEG
WATER AND WASTE DEPARTMENT

2004 WATERMAIN RENEWALS

CREE CRES (E LEG) EASEMENT
 113 m N OF STRAUSS DR TO CREE CR
 AND ABANDONMENT OF WWS & WM

SHEET 10 OF 13
 CITY DRAWING NUMBER: D-8497