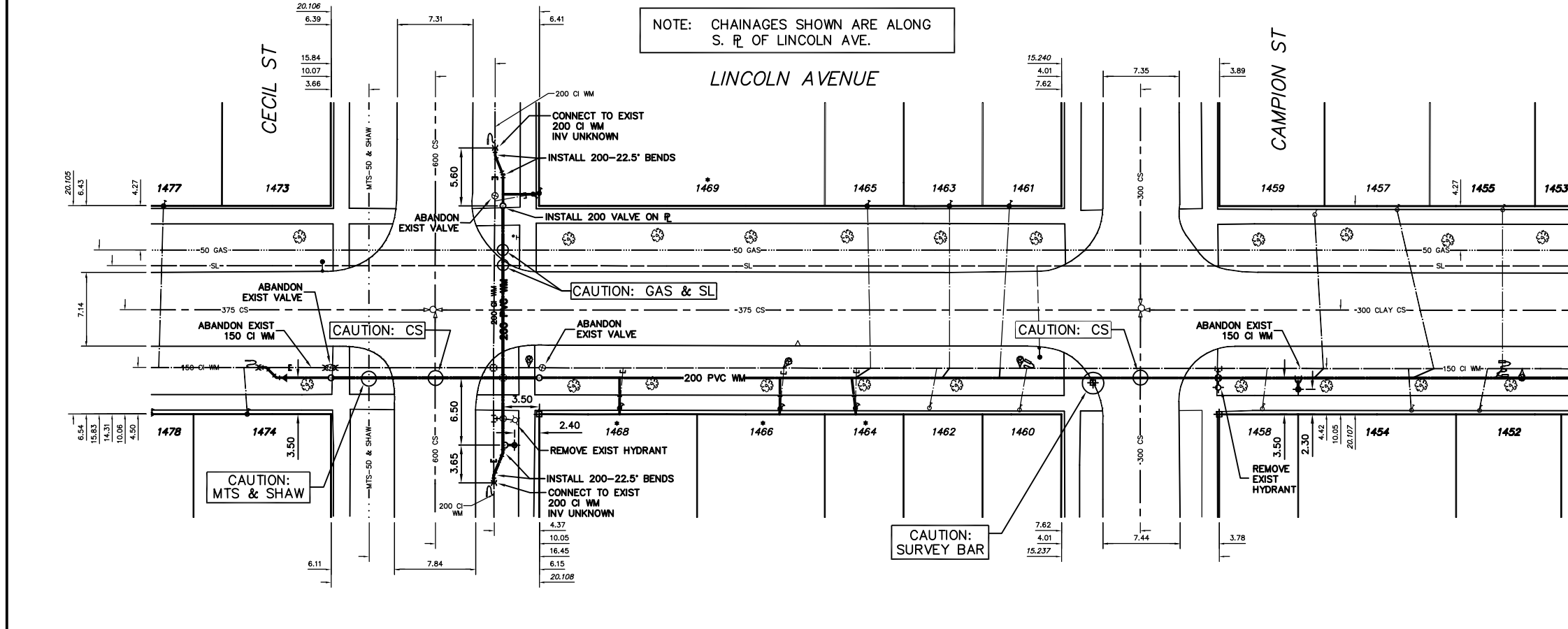


WATER SERVICE INFORMATION					
ADDRESS	SIZE(mm) & TYPE (STREET)	SIZE(mm) & TYPE (PROP)	SHORT & LONG MEASUREMENT	CORP. LOCATION	REMARKS
1450 LINCOLN AVE RESIDENTIAL	13 COPPER	13 LEAD	OPP WL HSE	OPP S/C	-
1452 LINCOLN AVE RESIDENTIAL	13 COPPER	13 LEAD	33.8 EEL CAMPION	0.3 E OF S/C	-
1453 LINCOLN AVE RESIDENTIAL	13 COPPER	13 LEAD	1.52 EWL HSE	0.3 E OF S/C	-
1454 LINCOLN AVE RESIDENTIAL	13 COPPER	13 LEAD	25.6 EEL CAMPION	3.05 E OF S/C	-
1455 LINCOLN AVE RESIDENTIAL	13 COPPER	13 LEAD	30.5 EEL CAMPION	OPP S/C	-
1457 LINCOLN AVE RESIDENTIAL	13 COPPER	13 LEAD	3.66 WEL HSE	0.3 E OF S/C	-
1458 LINCOLN AVE RESIDENTIAL	13 COPPER	13 LEAD	16.3 EEL CAMPION	0.3 E OF S/C	-
1459 LINCOLN AVE RESIDENTIAL	13 COPPER	13 LEAD	20.4 EEL CAMPION	0.46 E OF S/C	-
1460 LINCOLN AVE RESIDENTIAL	13 COPPER	13 LEAD	2.7 EWL HSE	0.60 E OF S/C	-
1461 LINCOLN AVE RESIDENTIAL	13 COPPER	13 LEAD	9.45 EEL CAMPION	0.6 E OF S/C	-
1462 LINCOLN AVE RESIDENTIAL	13 COPPER	13 LEAD	1.9 WEL HSE	0.91 W OF S/C	-
1463 LINCOLN AVE RESIDENTIAL	13 COPPER	13 LEAD	0.3 OFF E	0.61 E OF S/C	-
1464 LINCOLN AVE RESIDENTIAL	13 COPPER	13 LEAD	2.13 EWL HSE	0.46 E OF S/C	-
1465 LINCOLN AVE RESIDENTIAL	13 COPPER	13 LEAD	12.6 WEL HSE	0.61 E OF S/C	-
1466 LINCOLN AVE RESIDENTIAL	13 COPPER	13 LEAD	10.8 WEL HSE	OPP S/C	-
1467 LINCOLN AVE RESIDENTIAL	13 COPPER	13 LEAD	2.44 EWL HSE	OPP S/C	-
1468 LINCOLN AVE RESIDENTIAL	13 COPPER	13 LEAD	19.8 WEL HSE	0.3 E OF S/C	-
1469 LINCOLN AVE RESIDENTIAL	13 COPPER	13 LEAD	2.44 WEL HSE	0.3 E OF S/C	-
1470 LINCOLN AVE RESIDENTIAL	13 COPPER	13 LEAD	18.75 WEL HSE	0.3 E OF S/C	-
1471 LINCOLN AVE RESIDENTIAL	13 COPPER	13 LEAD	2.3 WEL HSE	0.3 E OF S/C	-
1472 LINCOLN AVE RESIDENTIAL	13 COPPER	13 LEAD	23.3 EEL CECL	-	SERV. OFF CECL
1473 LINCOLN AVE RESIDENTIAL	13 COPPER	13 LEAD	4.9 EWL HSE	0.3 E OF S/C	-
1474 LINCOLN AVE RESIDENTIAL	13 COPPER	13 LEAD	0.3 INTO E	-	SERV. OFF CECL
1475 LINCOLN AVE RESIDENTIAL	13 COPPER	13 LEAD	1.22 NNL LINCOLN	-	SERV. OFF CECL
1476 LINCOLN AVE RESIDENTIAL	13 COPPER	13 LEAD	4.6 NSL HSE	0.3 N OF S/C	-
1477 LINCOLN AVE RESIDENTIAL	13 COPPER	13 LEAD	11.0 NNL LINCOLN	0.3 N OF S/C	-
1478 LINCOLN AVE RESIDENTIAL	13 COPPER	13 LEAD	3.66 EWL HSE	0.3 W OF S/C	-
1479 LINCOLN AVE RESIDENTIAL	13 COPPER	13 LEAD	8.08 WEL CECL	-	-



*SERVICES TO BE RENEWED TO R, ALL OTHERS TO BE RECONNECTED

CONSTRUCTION NOTES

1. EXPOSE EXISTING WATERMAIN & CONFIRM INVERTS PRIOR TO CONSTRUCTION.
2. LOCATION OF ALL SERVICES TO BE CONFIRMED IN THE FIELD.
3. INSTALL WATERMAIN BY TRENCHLESS METHODS.
4. TRENCHES AND EXCAVATIONS WITHIN 1 METRE OF A PAVED AREA INCLUDING SIDEWALKS SHALL BE CLASS 3 BACKFILL.
5. ALL MATERIALS SHALL CONFORM TO THE CITY OF WINNIPEG STANDARD CONSTRUCTION SPECIFICATIONS.
6. MINIMUM COVER TO TOP OF WATERMAIN SHALL BE 2.4 m.
7. REPLACE ALL EXISTING LEAD SERVICES FROM PROPOSED WATERMAIN TO R.
8. NOTIFY ALL AFFECTED RESIDENTS AND BUSINESSES 24 HOURS IN ADVANCE OF ANY WATER SHUTDOWNS OR DISRUPTION OF SERVICE.

METRIC
WHOLE NUMBERS INDICATE MILLIMETRES
DECIMALIZED NUMBERS INDICATE METRES

NOTE: ALL VALVES TO BE INSTALLED COUNTERCLOCKWISE TO CLOSE

WARNING
IF POWER EQUIPMENT OR EXPLOSIVES ARE TO BE USED FOR EXCAVATION ON THIS PROJECT THE CONTRACTOR MUST:
1) NOTIFY THE GAS COMPANY OF THE PROPOSED LOCATION OF EXCAVATION.
2) TAKE PRECAUTION TO AVOID DAMAGE TO GAS COMPANY INSTALLATIONS.
SEE PROVINCIAL REGULATION 210/72 FOR DETAILS

200 WM	WATERMAIN	200 WM	SL, HYDRO	150 WM	WATERMAIN	150 WM
⊕	HYDRANT	⊕	MTS	⊕	HYDRANT	⊕
⊙	VALVE	⊙	TRAFFIC SIGNALS	⊕	VALVE	⊕
525 LDS	LAND DRAINAGE SEWER	525 LDS	GAS	50 GAS	300 LDS	LAND DRAINAGE SEWER
375 WWS	WASTEWATER SEWER	375 WWS	SURVEY BAR	250 WWS	WASTEWATER SEWER	250 WWS
○	MANHOLE	●	FENCE	⊕	⊕	PROFILE
□	CATCH BASIN	■	POLE - HYDRO, MTS	⊕	⊕	GROUND ABOVE PIPE
▽	CURB INLET	▽	CURB STOP	⊕	⊕	
△	REDUCER	△	GUY ANCHOR	⊕	⊕	
⊕	COUPLING	⊕	LIGHT STANDARD	⊕	⊕	
⊕	ANODE	⊕	TREE	⊕	⊕	
EXISTING	LEGEND-PLAN	PROPOSED	EXISTING	LEGEND-PLAN	PROPOSED	EXISTING

LOCATION APPROVED UNDERGROUND STRUCTURES	SUPV. U/O STRUCTURES COMMITTEE	DATE
NOTE: LOCATION OF UNDERGROUND STRUCTURES AS SHOWN ARE BASED ON THE BEST INFORMATION AVAILABLE BUT NO GUARANTEE IS GIVEN THAT ALL EXISTING UTILITIES ARE SHOWN OR THAT THE GIVEN LOCATIONS ARE EXACT. CONFIRMATION OF EXISTENCE AND EXACT LOCATION OF ALL SERVICES MUST BE OBTAINED FROM THE INDIVIDUAL UTILITIES BEFORE PROCEEDING WITH CONSTRUCTION.		

CITY OF WINNIPEG
WATER AND WASTE
ENGINEERING DIVISION

DESIGNED BY DS/CJH
CHECKED BY TW

DRAWN BY RWK/CJH
APPROVED BY KZ

HOR. SCALE 1:250
VERTICAL 1:50

RELEASED FOR CONSTRUCTION

DATE 2004 04 07

ENGINEER'S SEAL

ORIGINAL SIGNED BY K.R. ZUREK
04/04/19

THE CITY OF WINNIPEG
WATER AND WASTE DEPARTMENT

2004 WATERMAIN RENEWALS

LINCOLN AVENUE
FROM W R CECIL STREET
TO 34 m E OF E R CAMPION STREET

SHEET 6 OF 10
CITY DRAWING NUMBER D-8455

BID OPPORTUNITY: 151-2004
FILENAME: D-8455 to 87.dwg
PLOT DATE: 2004 04 20