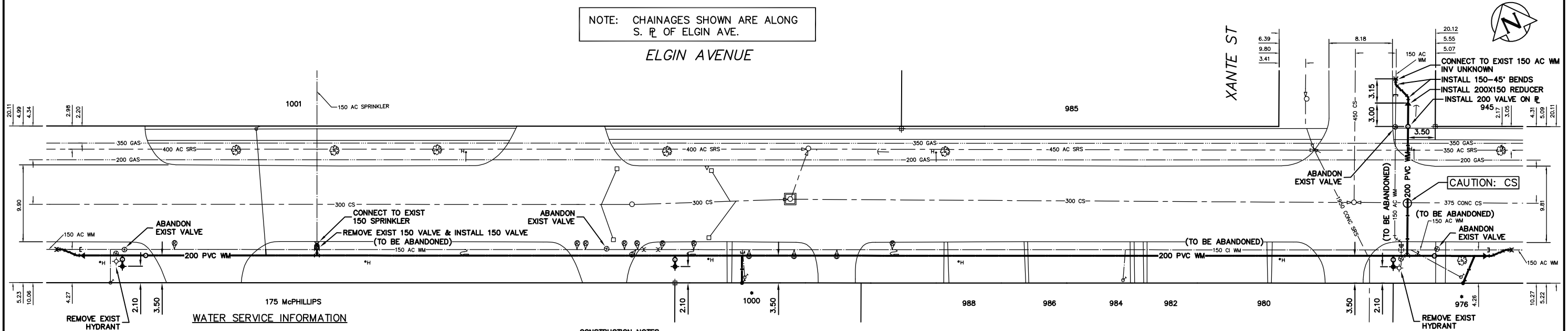


NOTE: CHAINAGES SHOWN ARE ALONG S. R. OF ELGIN AVE.

ELGIN AVENUE

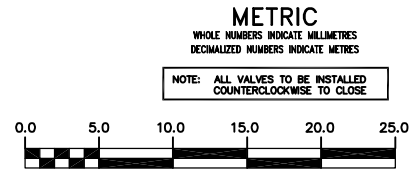


175 McPHILLIPS WATER SERVICE INFORMATION

ADDRESS	SIZE(mm)	SIZE(mm) & TYPE (STREET) (PROP)	SHORT & LONG MEASUREMENT	CORP. LOCATION	REMARKS
945 ELGIN AVE	19	19	3.35 E 2ND HYD W ARLINGTON	1.83 W OF S/C	REV. TAPPED
945 ELGIN AVE	19	19	3.30 EWL BLDG	6.25 W OF S/C	RENEW W/ 25 COPPER
976 ELGIN AVE	19	19	8.23 EWL BLDG	6.25 W OF S/C	RENEW W/ 25 COPPER
980 ELGIN AVE	25	25	2.90 EEL XANTE	0.3 E OF S/C	SINGLE SERV. ALSO TO #982, 984, 986, & 988
980 ELGIN AVE	25	25	19.51 W W XANTE	0.3 E OF S/C	SERV. OFF XANTE
985 ELGIN AVE	25	25	23.32 WEL BLDG	0.15 S OF S/C	SERV. OFF XANTE
985 ELGIN AVE	25	25	2.13 NNL BLDG	0.15 S OF S/C	SERV. OFF XANTE
1001 ELGIN AVE	19	19	46.63 NNL ELGIN	0.3 W OF S/C	SERV. REPAIR JAN/28/94
1001 ELGIN AVE	19	19	8.53 WEL BLDG	0.3 W OF S/C	RENEW W/ 25 COPPER
1001 ELGIN AVE	38	38	7.01 EWL BLDG	1.22 E OF S/C	RENEW W/ 25 COPPER
1001 ELGIN AVE	150	150	17.98 E 1ST HYD E McPHILLIPS	OPP VALVE	
1001 ELGIN AVE	150	150	25.21 E 1ST HYD E McPHILLIPS	OPP VALVE	
SPRINKLER	AC	AC	5.63 EWL BLDG	OPP S/C	SERV. OFF ELGIN
715 McPHILLIPS ST	25	25	76.69 EEL McPHILLIPS	OPP S/C	SERV. OFF ELGIN

* SERVICES TO BE RENEWED TO R. ALL OTHERS TO BE RECONNECTED

- CONSTRUCTION NOTES**
1. EXPOSE EXISTING WATERMAIN & CONFIRM INVERTS PRIOR TO CONSTRUCTION.
 2. LOCATION OF ALL SERVICES TO BE CONFIRMED IN THE FIELD.
 3. INSTALL WATERMAIN BY TRENCHLESS METHODS.
 4. TRENCHES AND EXCAVATIONS WITHIN 1 METRE OF A PAVED AREA INCLUDING SIDEWALKS SHALL BE CLASS 3 BACKFILL.
 5. ALL MATERIALS SHALL CONFORM TO THE CITY OF WINNIPEG STANDARD CONSTRUCTION SPECIFICATIONS.
 6. MINIMUM COVER TO TOP OF WATERMAIN SHALL BE 2.4 m.
 7. REPLACE ALL EXISTING LEAD SERVICES FROM PROPOSED WATERMAIN TO R.
 8. NOTIFY ALL AFFECTED RESIDENTS AND BUSINESSES 24 HOURS IN ADVANCE OF ANY WATER SHUTDOWNS OR DISRUPTION OF SERVICE.



WARNING

IF POWER EQUIPMENT OR EXPLOSIVES ARE TO BE USED FOR EXCAVATION ON THIS PROJECT THE CONTRACTOR MUST:

- 1) NOTIFY THE GAS COMPANY OF THE PROPOSED LOCATION OF EXCAVATION.
- 2) TAKE PRECAUTION TO AVOID DAMAGE TO GAS COMPANY INSTALLATIONS.

SEE PROVINCIAL REGULATION 210/72 FOR DETAILS

200 WM	WATERMAIN	200 WM	SL, HYDRO	150 WM	WATERMAIN	150 WM
+	HYDRANT	+	MTS	+	HYDRANT	+
o	VALVE	o	TRAFFIC SIGNALS	o	VALVE	o
525 LDS	LAND DRAINAGE SEWER	525 LDS	GAS	50 GAS	300 LDS	LAND DRAINAGE SEWER
375 WWS	WASTEWATER SEWER	375 WWS	SURVEY BAR	250 WWS	250 WWS	WASTEWATER SEWER
o	MANHOLE	o	FENCE	o	o	PROFILE
□	CATCH BASIN	□	POLE - HYDRO, MTS	□	□	GROUND ABOVE PIPE
▽	CURB INLET	▽	CURB STOP	▽	▽	
△	REDUCER	△	GUY ANCHOR	△	△	
X	COUPLING	X	LIGHT STANDARD	X	X	
o	ANODE	o	TREE	o	o	
EXISTING	LEGEND-PLAN	PROPOSED	EXISTING	LEGEND-PLAN	PROPOSED	EXISTING
						LEGEND-PROFILE
						PROPOSED

LOCATION APPROVED UNDERGROUND STRUCTURES

SUPV. U/O STRUCTURES COMMITTEE	DATE

NOTE:
LOCATION OF UNDERGROUND STRUCTURES AS SHOWN ARE BASED ON THE BEST INFORMATION AVAILABLE BUT NO GUARANTEE IS GIVEN THAT ALL EXISTING UTILITIES ARE SHOWN OR THAT THE GIVEN LOCATIONS ARE EXACT. CONFIRMATION OF EXISTENCE AND EXACT LOCATION OF ALL SERVICES MUST BE OBTAINED FROM THE INDIVIDUAL UTILITIES BEFORE PROCEEDING WITH CONSTRUCTION.

CITY OF WINNIPEG WATER AND WASTE ENGINEERING DIVISION

DESIGNED BY: DS/CJH
CHECKED BY: TW

DRAWN BY: CJH
APPROVED BY: KZ

HOR. SCALE: 1:250
VERTICAL SCALE: 1:50

RELEASED FOR CONSTRUCTION: 2004 04 07

ENGINEER'S SEAL

ORIGINAL SIGNED BY K.R. ZUREK
04/04/19

BID OPPORTUNITY: 151-2004
FILENAME: D-8454.dwg
PLOT DATE: 2004 04 20

THE CITY OF WINNIPEG WATER AND WASTE DEPARTMENT

2004 WATERMAIN RENEWALS

ELGIN AVENUE
XANTE STREET TO
150 m W OF XANTE STREET

SHEET 5 OF 10
CITY DRAWING NUMBER
D-8454